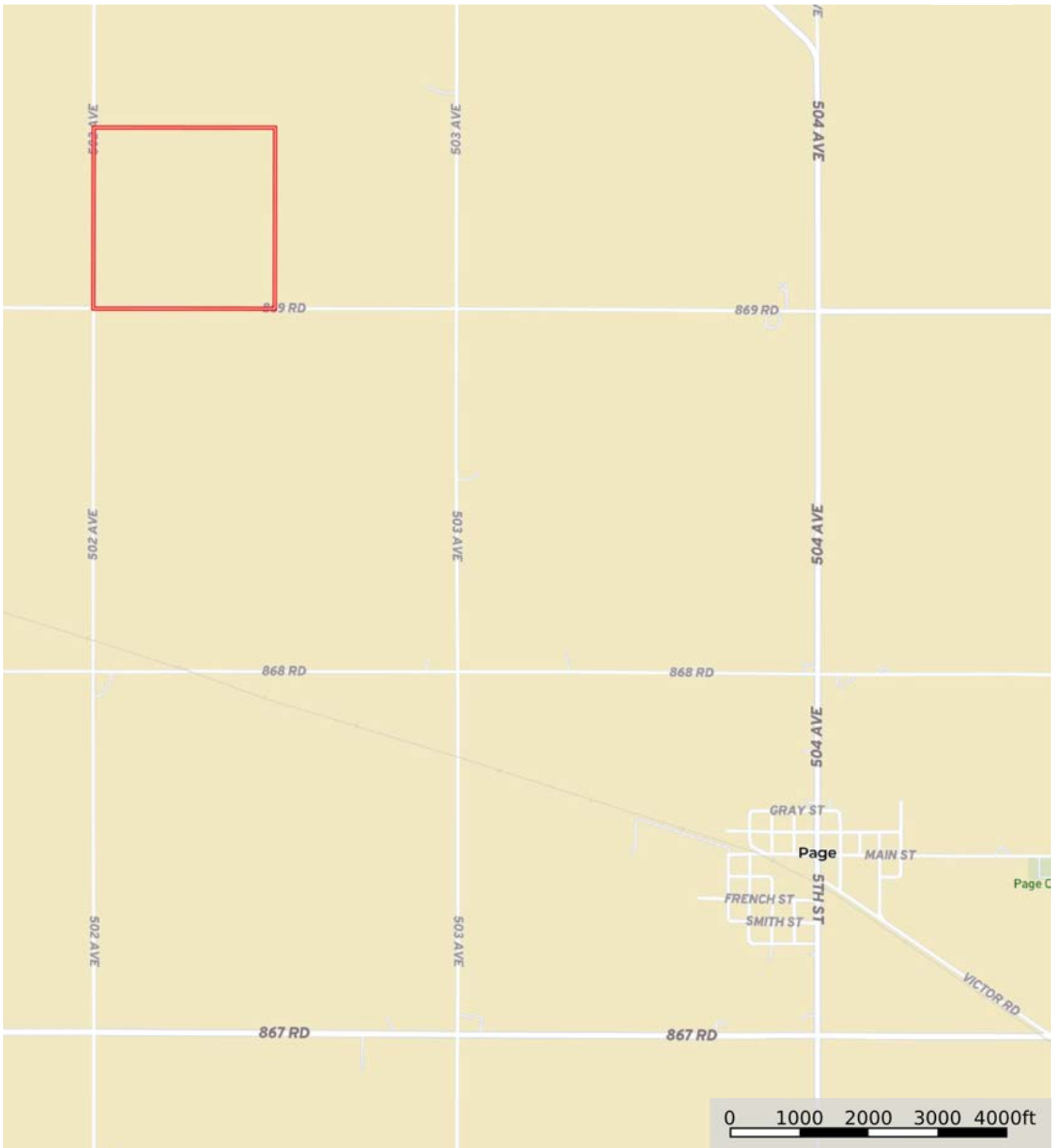



L-2400031

Holt County, Nebraska, 160 AC +/-



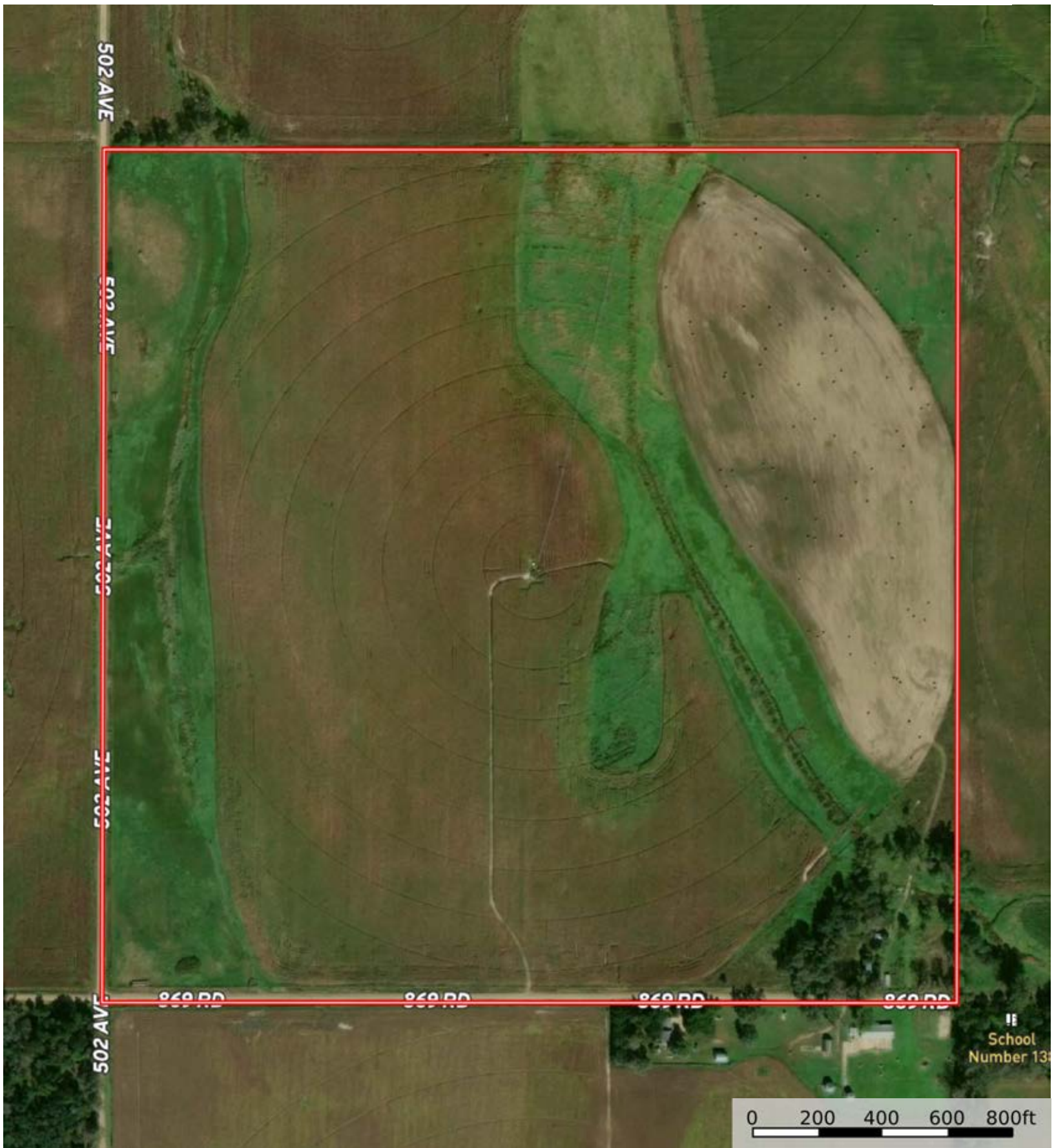
 Boundary



The information contained herein was obtained from sources deemed to be reliable. Land id™ Services makes no warranties or guarantees as to the completeness or accuracy thereof.

L-2400031

Holt County, Nebraska, 160 AC +/-



 Boundary



The information contained herein was obtained from sources deemed to be reliable. Land id™ Services makes no warranties or guarantees as to the completeness or accuracy thereof.

L-2400031

Holt County, Nebraska, 160 AC +/-



|  Boundary 159.78 ac

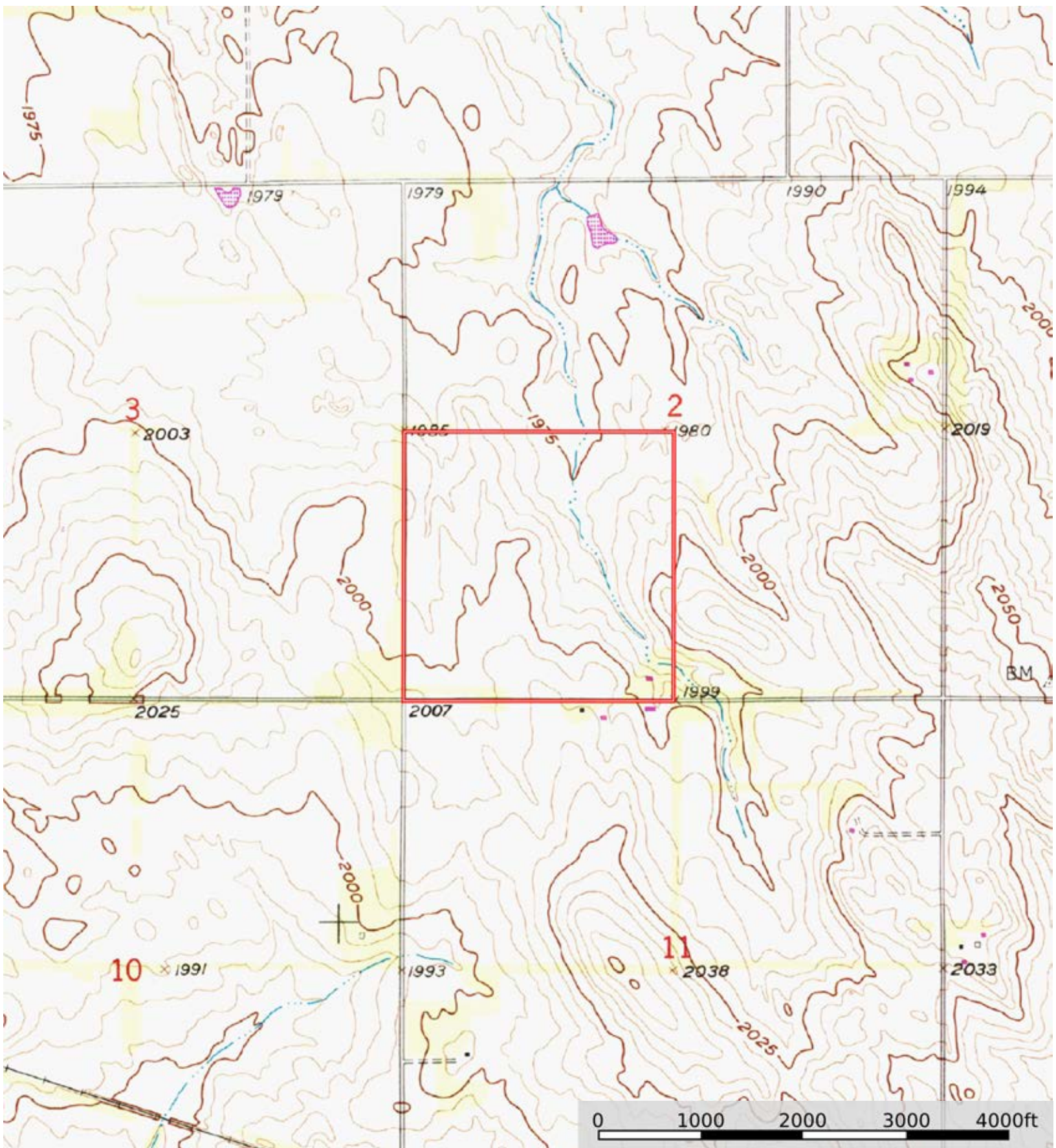
SOIL CODE	SOIL DESCRIPTION	ACRES	%	CPI	NCCPI	CAP
9004	Anselmo fine sandy loam, 3 to 6 percent slopes	61.24	38.33	54	36	3e
4370	Libory loamy fine sand, 0 to 3 percent slopes	38.72	24.23	57	49	3e
4249	Ord-Lute fine sandy loams, rarely flooded	23.81	14.9	0	30	2w
3286	Paka loam, 2 to 6 percent slopes	16.42	10.28	0	54	3e
3710	Cass fine sandy loam, rarely flooded	11.11	6.95	0	40	2e
3284	Paka fine sandy loam, 2 to 6 percent slopes	4.93	3.09	0	49	3e
4499	Dunday loamy sand, 3 to 6 percent slopes	3.11	1.95	0	24	4e
4498	Dunday loamy sand, 0 to 3 percent slopes	0.33	0.21	0	25	4e
3285	Paka loam, 0 to 2 percent slopes	0.11	0.07	0	55	2c
TOTALS		159.78(*)	100%	34.51	40.54	2.8

(*) Total acres may differ in the second decimal compared to the sum of each acreage soil. This is due to a round error because we only show the acres of each soil with two decimal.



L-2400031

Holt County, Nebraska, 160 AC +/-



Boundary