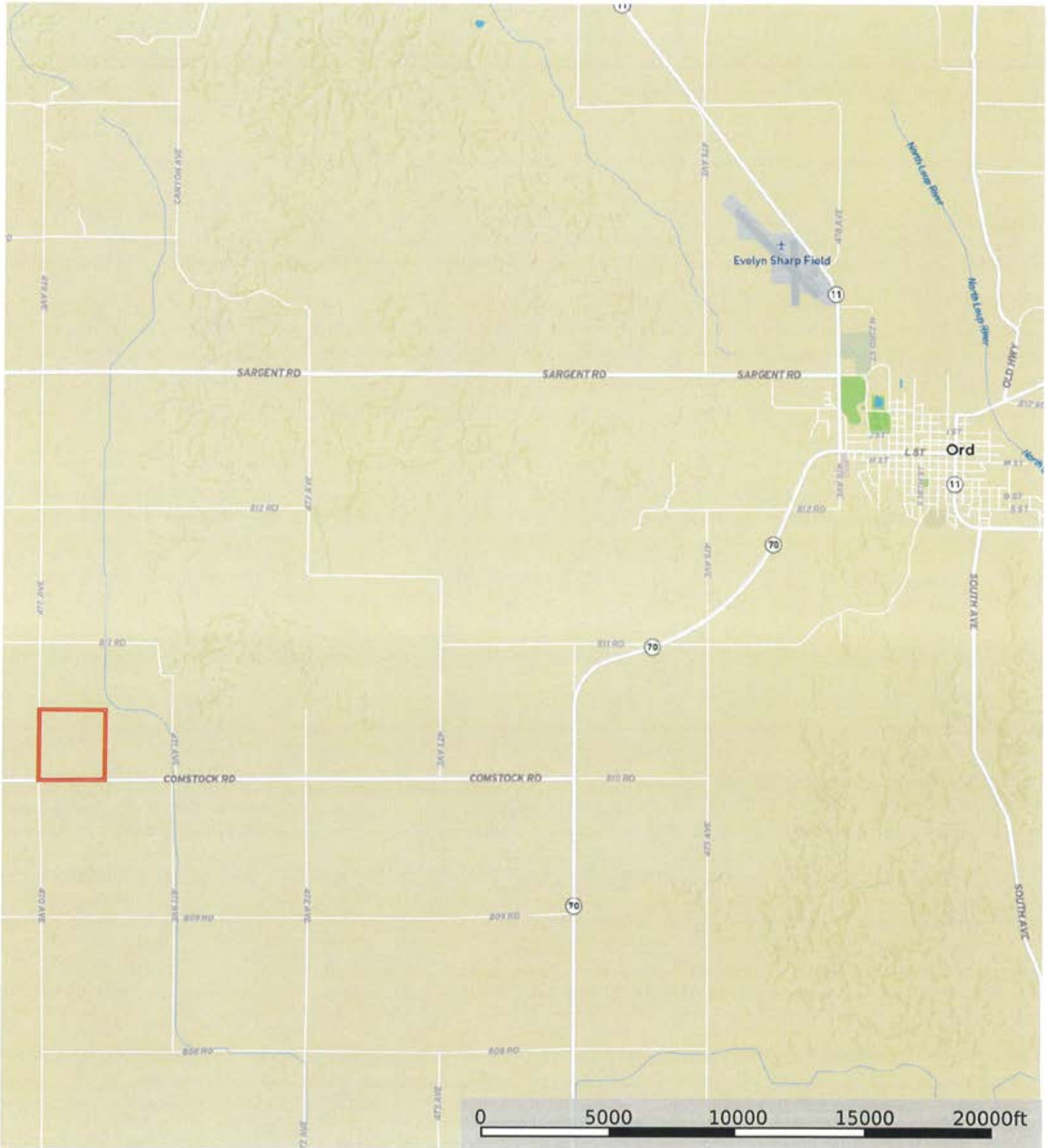


L-2400036

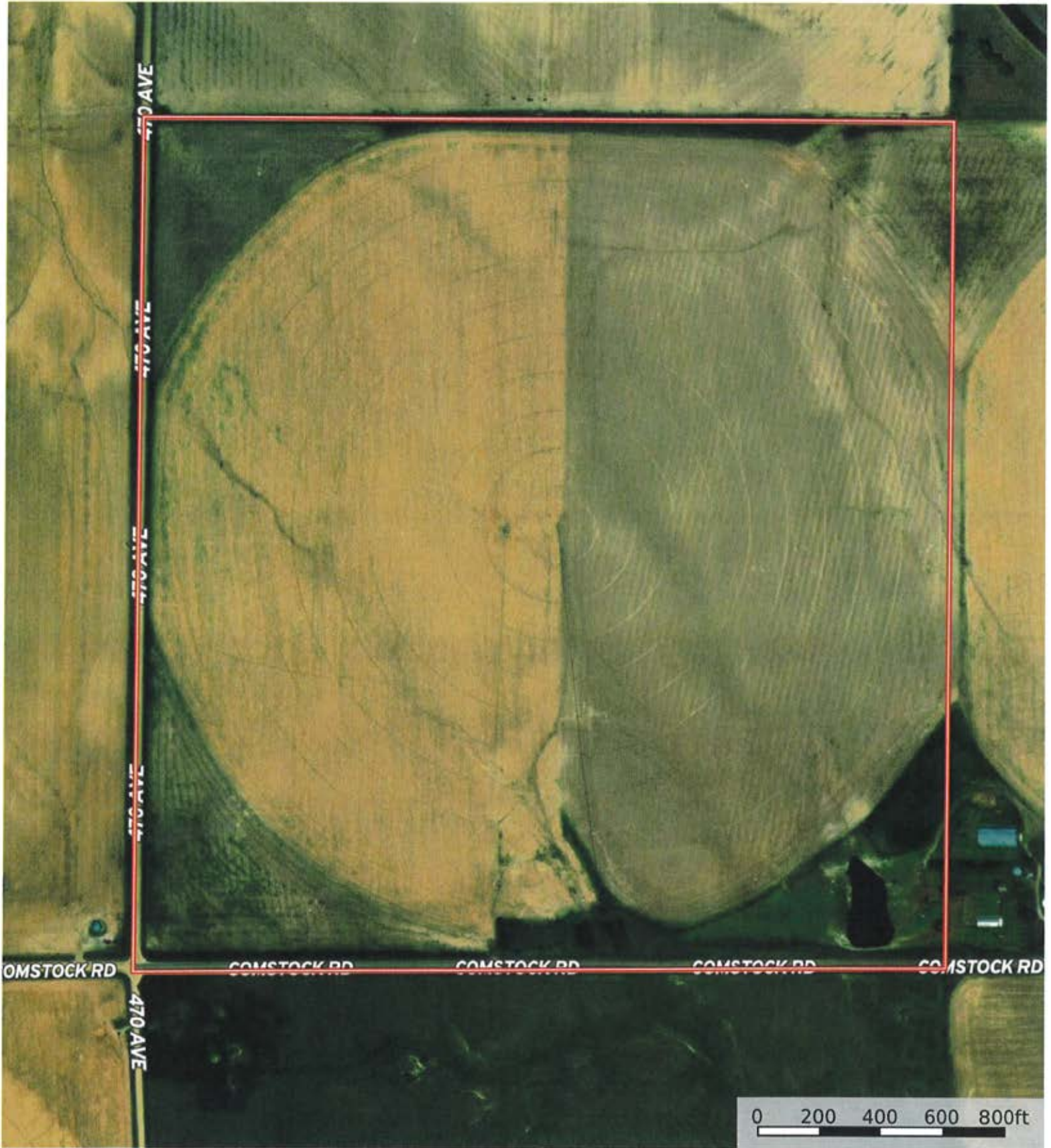
Valley County, Nebraska, 160 AC +/-



Boundary

L-2400036

Valley County, Nebraska, 160 AC +/-




 Boundary

L-2400036

Valley County, Nebraska, 160 AC +/-



 Boundary

|  Boundary 166.15 ac

SOIL CODE	SOIL DESCRIPTION	ACRES	%	CPI	NCCPI	CAP
2668	Holdrege silt loam, 1 to 3 percent slopes	110.38	66.43	0	76	2e
2671	Holdrege silt loam, 3 to 7 percent slopes, eroded	39.58	23.82	0	68	2e
2845	Uly-Coly silt loams, 11 to 17 percent slopes, eroded	6.19	3.73	0	58	6e
2831	Uly-Coly silt loams, 17 to 30 percent slopes, eroded	4.87	2.93	0	49	6e
8816	Cozad silt loam, 1 to 3 percent slopes	4.12	2.48	0	56	2e
8815	Cozad silt loam, 0 to 1 percent slopes	1.01	0.61	0	70	2c
TOTALS		166.15(*)	100%	-	72.1	2.27









(\*) Total acres may differ in the second decimal compared to the sum of each acreage soil. This is due to a round error because we only show the acres of each soil with two decimal.

### Capability Legend

Increased Limitations and Hazards

Decreased Adaptability and Freedom of Choice Users

Land, Capability

								
	1	2	3	4	5	6	7	8
'Wild Life'	•	•	•	•	•	•	•	•
Forestry	•	•	•	•	•	•	•	
Limited	•	•	•	•	•	•	•	
Moderate	•	•	•	•	•	•		
Intense	•	•	•	•	•			
Limited	•	•	•	•				
Moderate	•	•	•					
Intense	•	•						
Very Intense	•							

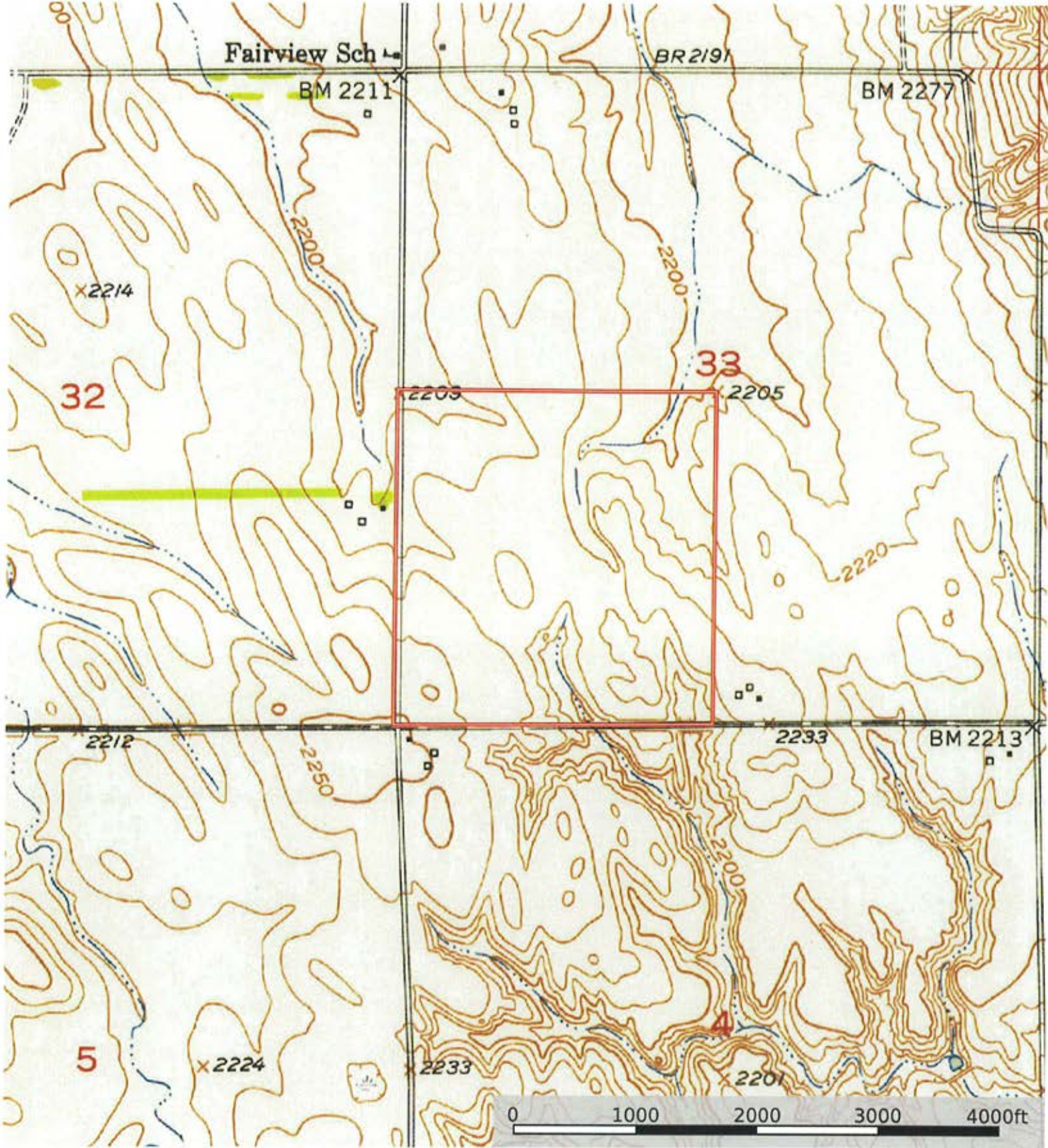
### Grazing Cultivation

(c) climatic limitations (e) susceptibility to erosion

(s) soil limitations within the rooting zone (w) excess of water

L-2400036

Valley County, Nebraska, 160 AC +/-



Boundary