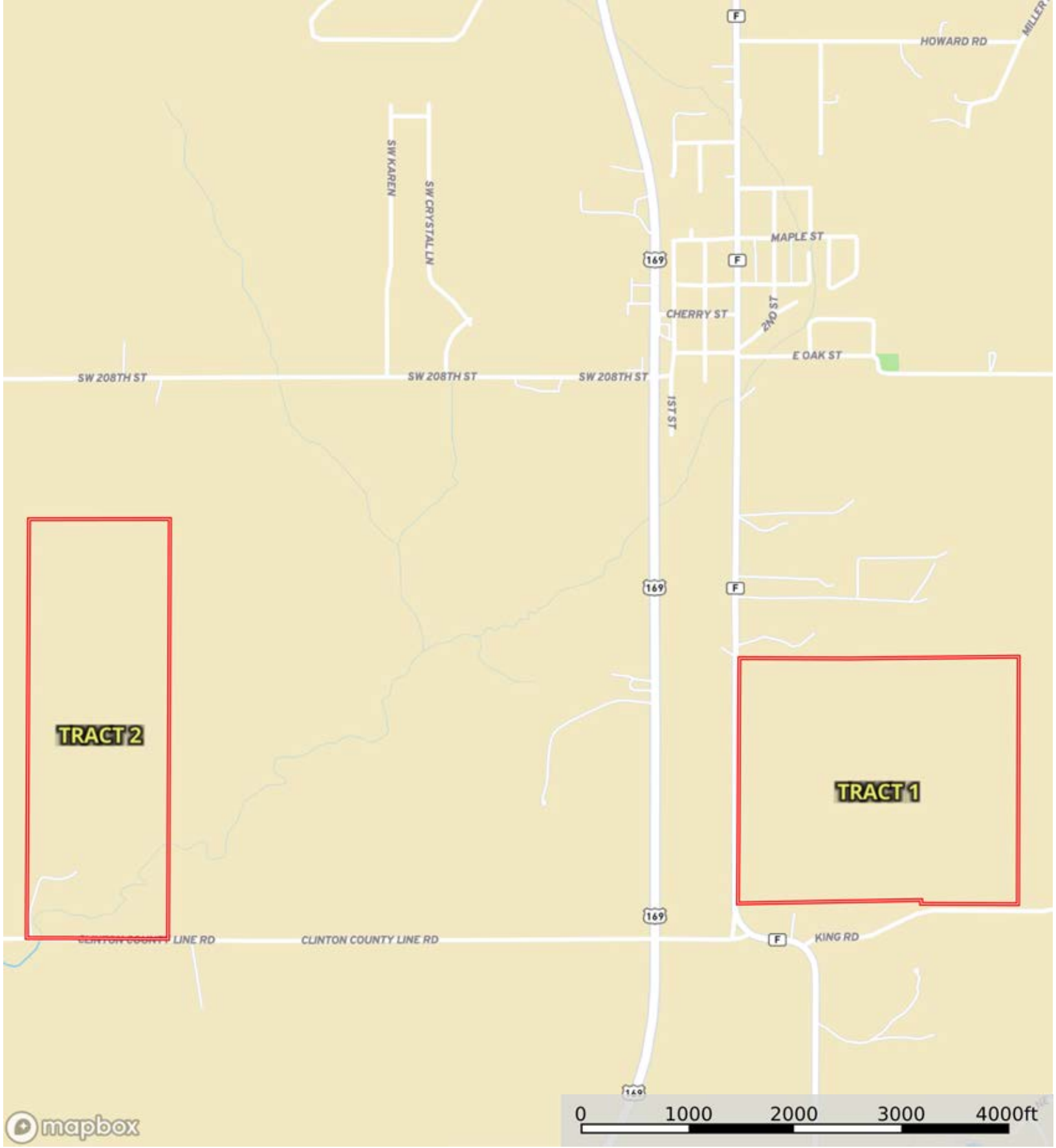


L-2400037

Clinton County, Missouri, 259.11 AC +/-



TRACT 2

TRACT 1




Boundary

L-2400037

Clinton County, Missouri, 259.11 AC +/-



 Boundary



The information contained herein was obtained from sources deemed to be reliable. Land id™ Services makes no warranties or guarantees as to the completeness or accuracy thereof.

L-2400037

Clinton County, Missouri, 259.11 AC +/-



mapbox

Boundary

|  Boundary 138.87 ac

SOIL CODE	SOIL DESCRIPTION	ACRES	%	CPI	NCCPI	CAP
10026	Higginsville silt loam, 5 to 9 percent slopes	67.9	48.9	0	89	3e
10125	Sharpsburg silty clay loam, loess hill, 5 to 9 percent slopes	22.64	16.3	0	84	3e
10132	Sibley silt loam, 2 to 5 percent slopes	19.89	14.32	0	92	2e
10124	Sharpsburg silty clay loam, loess hill, 2 to 5 percent slopes	15.85	11.41	0	76	2e
30200	Shelby loam, 9 to 14 percent slopes	12.59	9.07	0	72	3e
TOTALS		138.87(*)	100%	-	85.6	2.74


(*) Total acres may differ in the second decimal compared to the sum of each acreage soil. This is due to a round error because we only show the acres of each soil with two decimal.



L-2400037

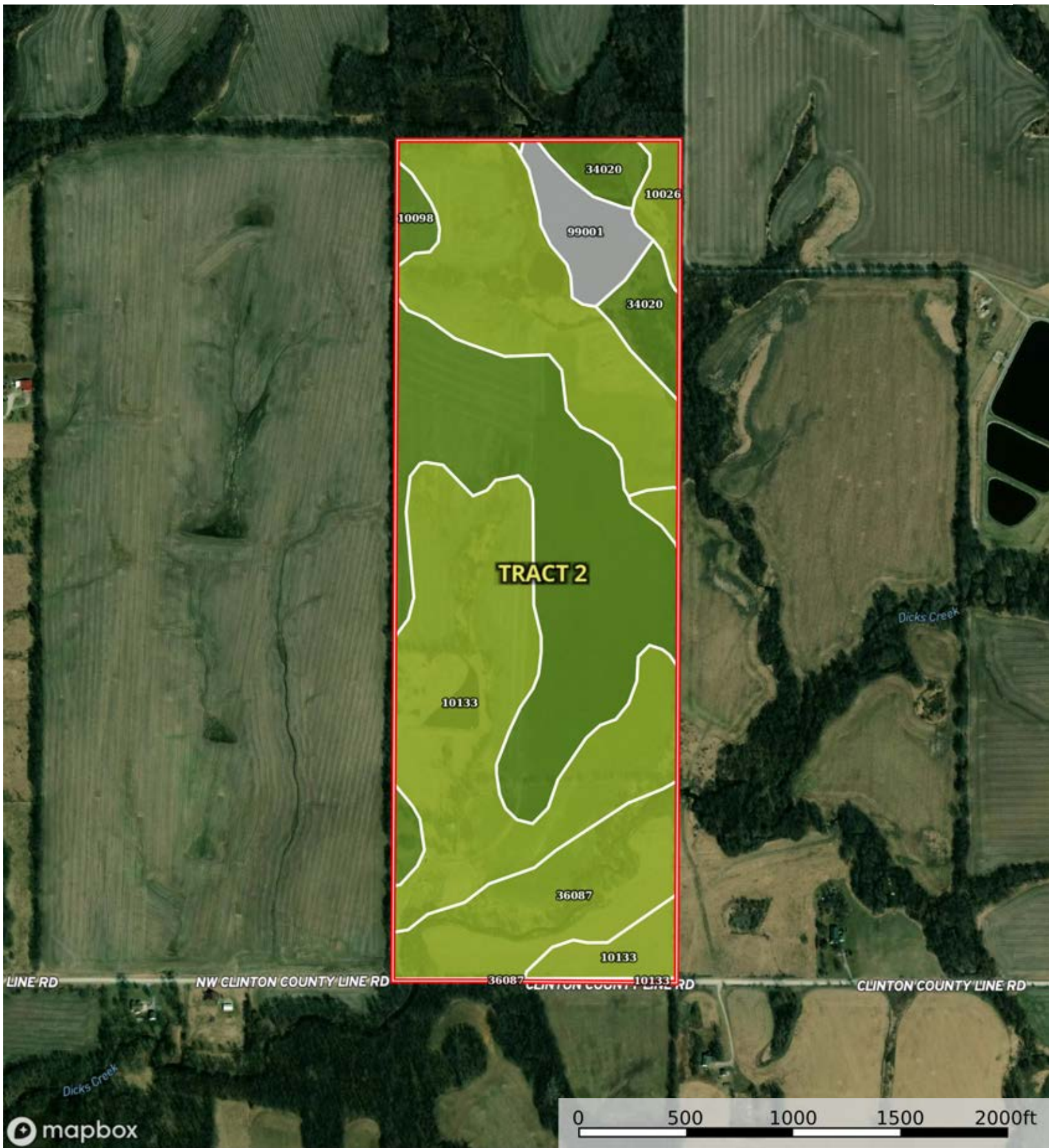
Clinton County, Missouri, 259.11 AC +/-



 Boundary

L-2400037

Clinton County, Missouri, 259.11 AC +/-



Boundary

|  Boundary 120.11 ac

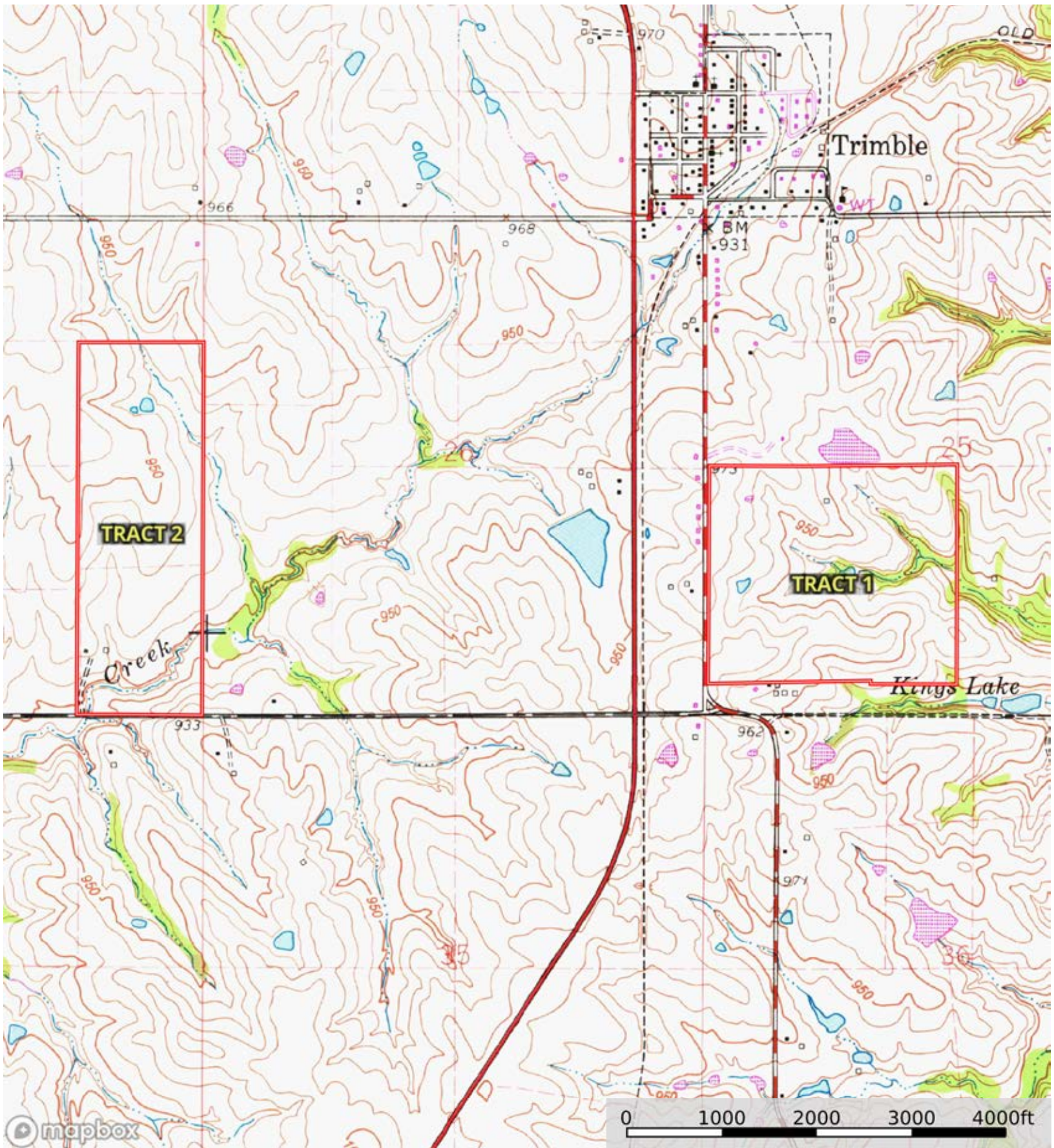
SOIL CODE	SOIL DESCRIPTION	ACRES	%	CPI	NCCPI	CAP
10133	Sibley silt loam, 5 to 9 percent slopes	37.37	31.12	0	91	3e
10098	Marshall silty clay loam, 2 to 5 percent slopes	34.72	28.91	0	87	2e
10026	Higginsville silt loam, 5 to 9 percent slopes	23.18	19.3	0	89	3e
36087	Nodaway silt loam, 1 to 3 percent slopes, frequently flooded	13.84	11.52	0	75	3w
34020	Colo silty clay loam, drainageway, 2 to 5 percent slopes, frequently flooded	5.99	4.99	0	82	2w
99001	Water	5.01	4.17	0	-	-
TOTALS		120.11(*)	100%	-	83.38	2.65

(*) Total acres may differ in the second decimal compared to the sum of each acreage soil. This is due to a round error because we only show the acres of each soil with two decimal.



L-2400037

Clinton County, Missouri, 259.11 AC +/-



Boundary



The information contained herein was obtained from sources deemed to be reliable. Land id™ Services makes no warranties or guarantees as to the completeness or accuracy thereof.