

Common Land Unit

- CRP
- Non-Cropland
- Cropland
- Tract Boundary
- PLSS

Wetland Determination Identifiers

- Restricted Use
- Limited Restrictions
- Exempt from Conservation
- Compliance Provisions

UNLESS OTHERWISE NOTED:

- ALL CORN IS YEL
- ALL SOYBEANS ARE COM
- ALL FIELDS ARE NI
- ALL CROPS ARE FOR GRAIN

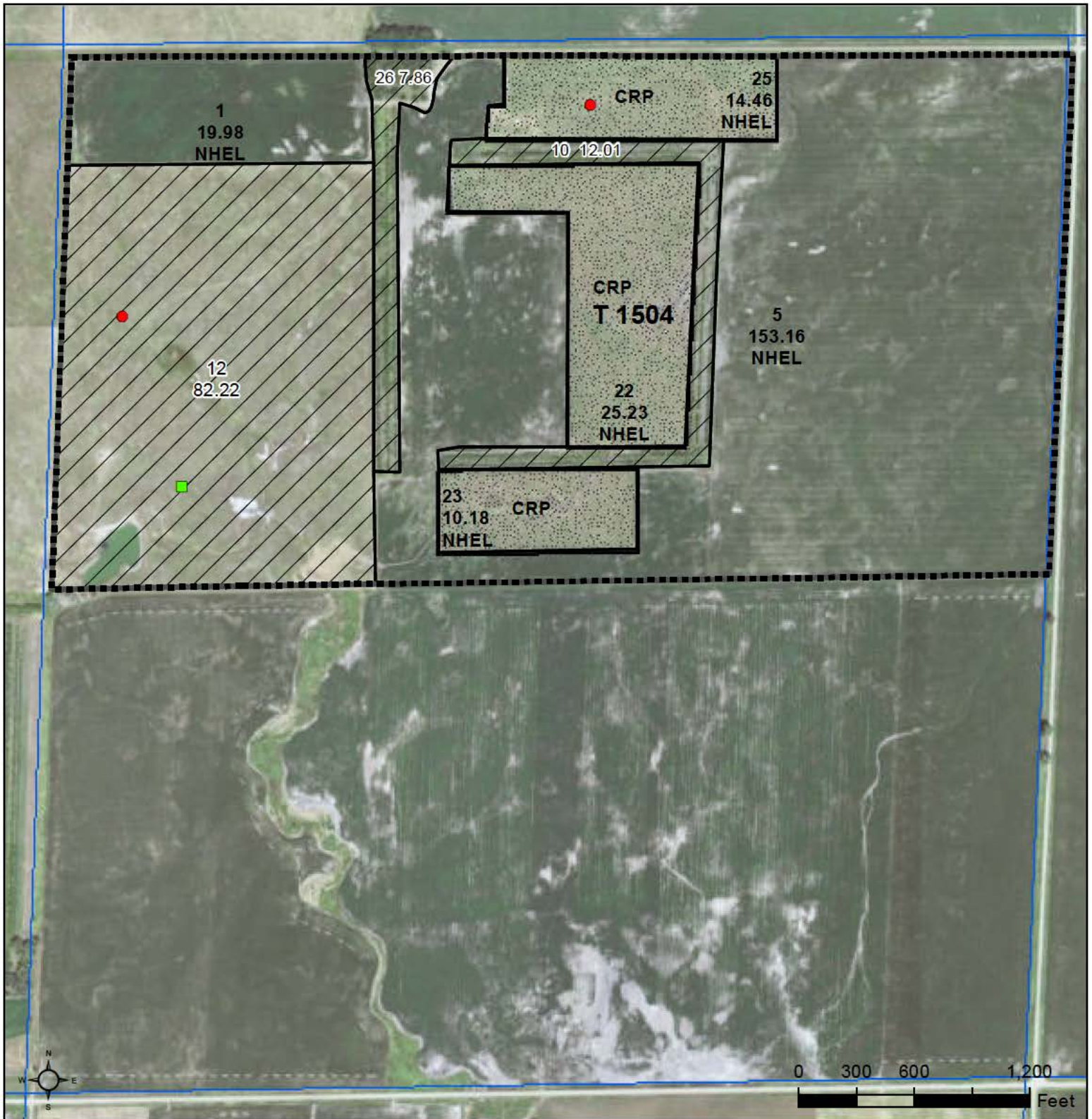
2023 Program Year
Map Created February 06, 2023

Farm 780

4 -105N -65W

INITIALS

United States Department of Agriculture (USDA) Farm Service Agency (FSA) maps are for FSA Program administration only. This map does not represent a legal survey or reflect actual ownership; rather it depicts the information provided directly from the producer and/or National Agricultural Imagery Program (NAIP) imagery. The producer accepts the data 'as is' and assumes all risks associated with its use. USDA-FSA assumes no responsibility for actual or consequential damage incurred as a result of any user's reliance on this data outside FSA Programs. Wetland identifiers do not represent the size, shape, or specific determination of the area. Refer to your original determination (CPA-026 and attached maps) for exact boundaries and determinations or contact USDA Natural Resources Conservation Service (NRCS).



Common Land Unit
 Non-Cropland
 Cropland
 CRP
 Tract Boundary
 PLSS

Wetland Determination Identifiers
 Restricted Use
 Limited Restrictions
 Exempt from Conservation
 Compliance Provisions

UNLESS OTHERWISE NOTED:

- ALL CORN IS YEL
- ALL SOYBEANS ARE COM
- ALL FIELDS ARE NI
- ALL CROPS ARE FOR GRAIN

INITIALS _____

2023 Program Year
 Map Created February 06, 2023

Farm 780

5 -105N -65W

United States Department of Agriculture (USDA) Farm Service Agency (FSA) maps are for FSA Program administration only. This map does not represent a legal survey or reflect actual ownership; rather it depicts the information provided directly from the producer and/or National Agricultural Imagery Program (NAIP) imagery. The producer accepts the data 'as is' and assumes all risks associated with its use. USDA-FSA assumes no responsibility for actual or consequential damage incurred as a result of any user's reliance on this data outside FSA Programs. Wetland identifiers do not represent the size, shape, or specific determination of the area. Refer to your original determination (CPA-026 and attached maps) for exact boundaries and determinations or contact USDA Natural Resources Conservation Service (NRCS).