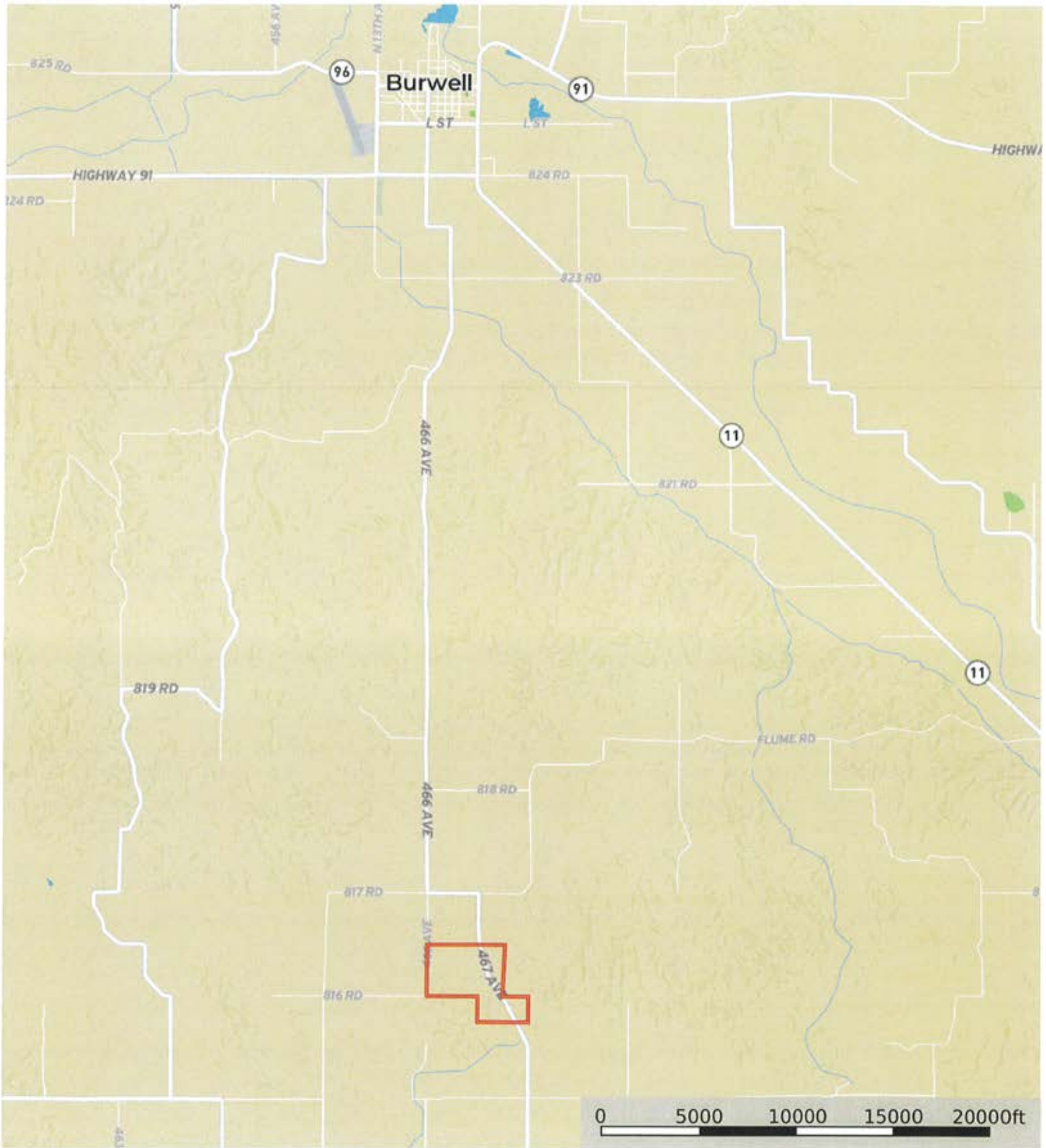


L-2400042

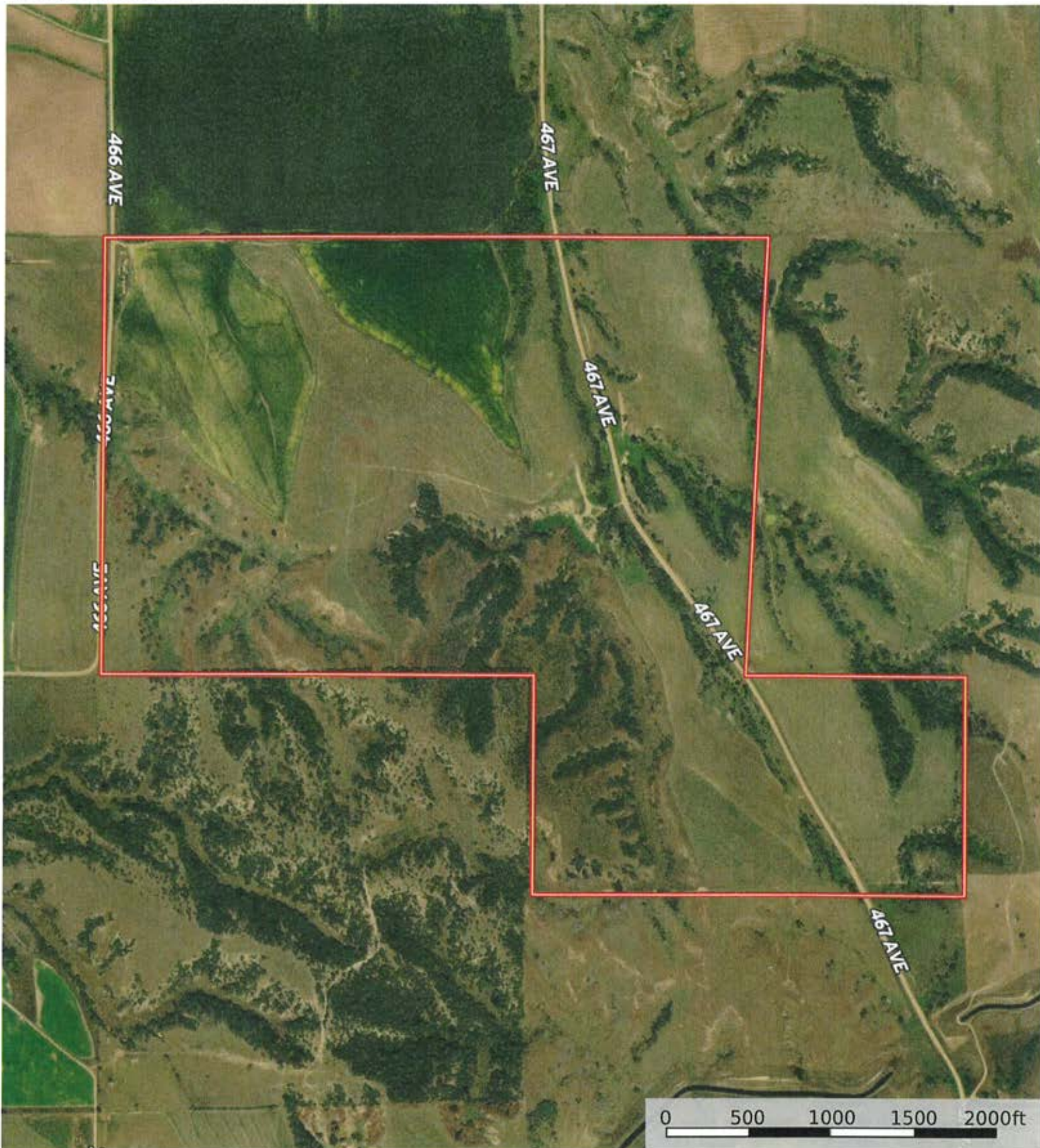
Valley County, Nebraska, 319.64 AC +/-



 Boundary

L-2400042

Valley County, Nebraska, 319.64 AC +/-



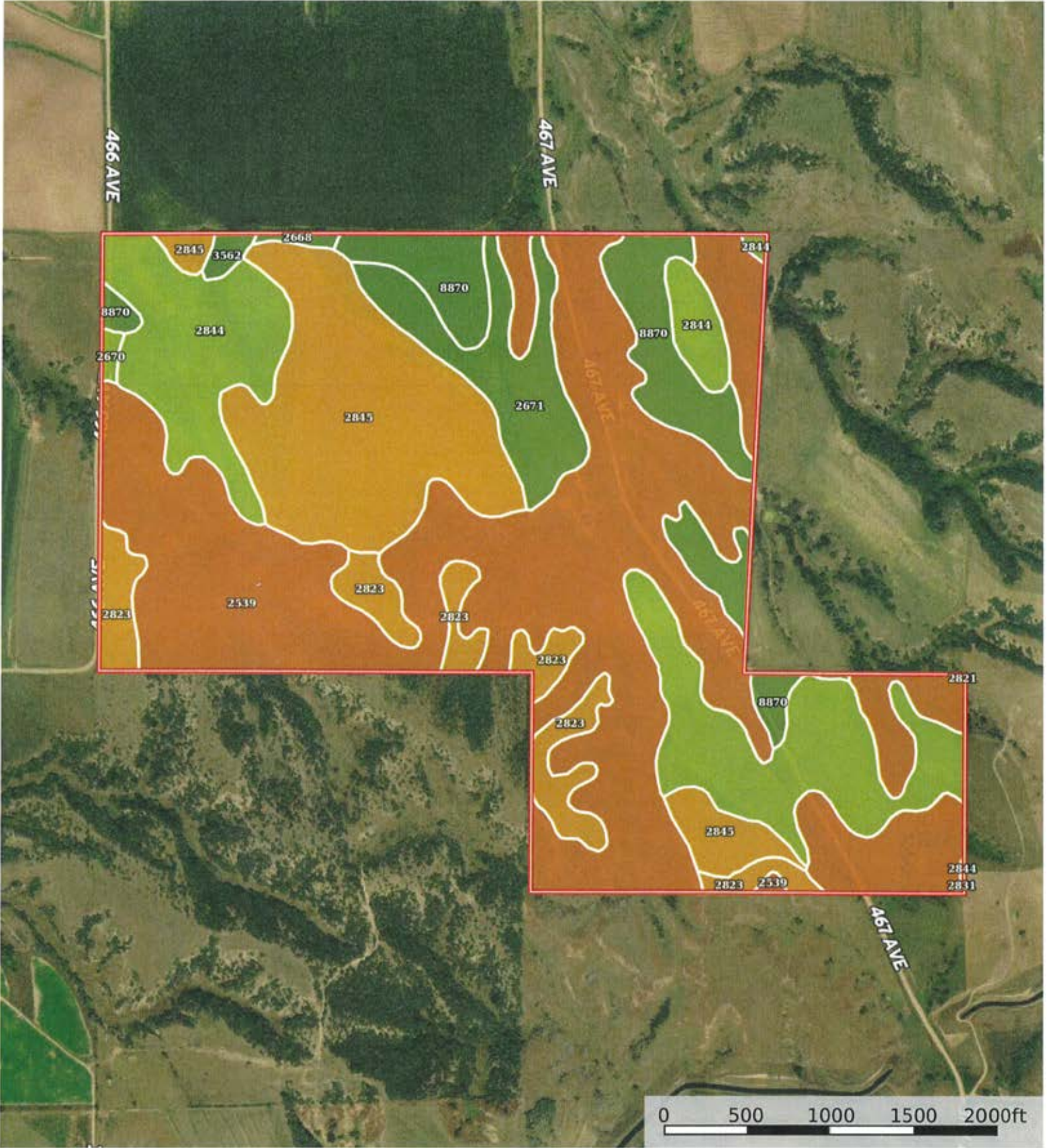
 Boundary




The information contained herein was obtained from sources deemed to be reliable. Land id.<sup>®</sup> Services makes no warranties or guarantees as to the completeness or accuracy thereof.

L-2400042

Valley County, Nebraska, 319.64 AC +/-



 Boundary

|  Boundary 317.54 ac

SOIL CODE	SOIL DESCRIPTION	ACRES	%	CPI	NCCPI	CAP
2539	Coly-Hobbs silt loams, 3 to 60 percent slopes	143.76	45.27	0	24	7e
2844	Uly-Coly silt loams, 6 to 11 percent slopes, eroded	56.31	17.73	0	63	3e
2845	Uly-Coly silt loams, 11 to 17 percent slopes, eroded	50.96	16.05	0	58	6e
8870	Hord silt loam, 1 to 3 percent slopes	26.67	8.4	0	75	2e
2823	Uly silt loam, 11 to 17 percent slopes, eroded	19.63	6.18	0	61	6e
2671	Holdrege silt loam, 3 to 7 percent slopes, eroded	17.27	5.44	0	68	2e
3562	Hobbs silt loam, occasionally flooded, cool	1.26	0.4	0	74	2w
2668	Holdrege silt loam, 1 to 3 percent slopes	0.77	0.24	0	76	2e
2670	Holdrege silt loam, 3 to 7 percent slopes	0.77	0.24	0	75	3e
2831	Uly-Coly silt loams, 17 to 30 percent slopes, eroded	0.08	0.03	0	49	6e
2821	Uly silt loam, 6 to 11 percent slopes, eroded	0.06	0.02	0	63	4e
TOTALS		317.54(*)	100%	-	45.8	5.33

(\*) Total acres may differ in the second decimal compared to the sum of each acreage soil. This is due to a round error because we only show the acres of each soil with two decimal.

## Capability Legend

Increased Limitations and Hazards

Decreased Adaptability and Freedom of Choice Users

Land, Capability								
	1	2	3	4	5	6	7	8
'Wild Life'	•	•	•	•	•	•	•	•
Forestry	•	•	•	•	•	•	•	
Limited	•	•	•	•	•	•	•	
Moderate	•	•	•	•	•	•		
Intense	•	•	•	•	•			
Limited	•	•	•	•				
Moderate	•	•	•					
Intense	•	•						
Very Intense	•							

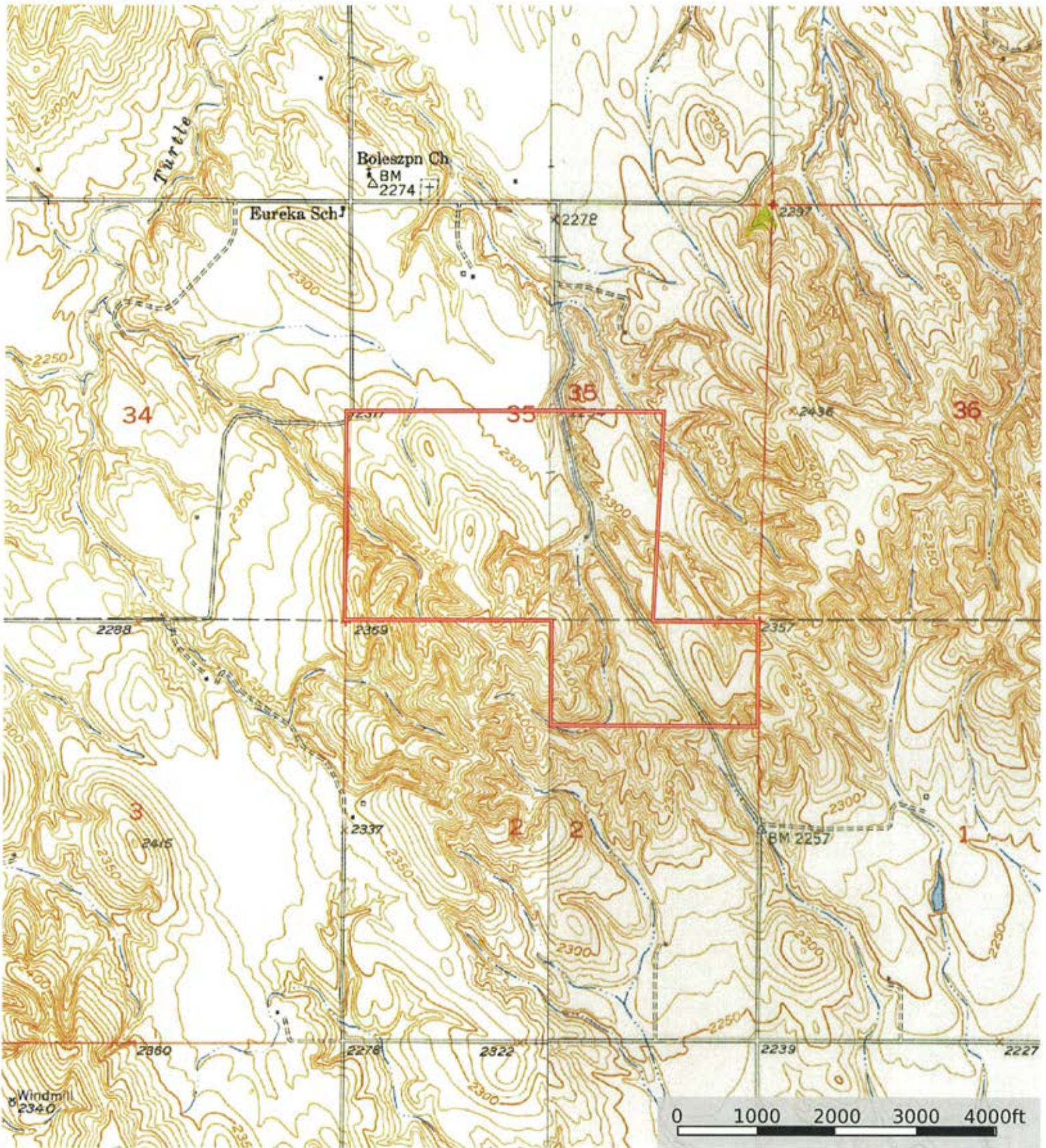
### Grazing Cultivation

(c) climatic limitations (e) susceptibility to erosion

(s) soil limitations within the rooting zone (w) excess of water

L-2400042

Valley County, Nebraska, 319.64 AC +/-



 Boundary