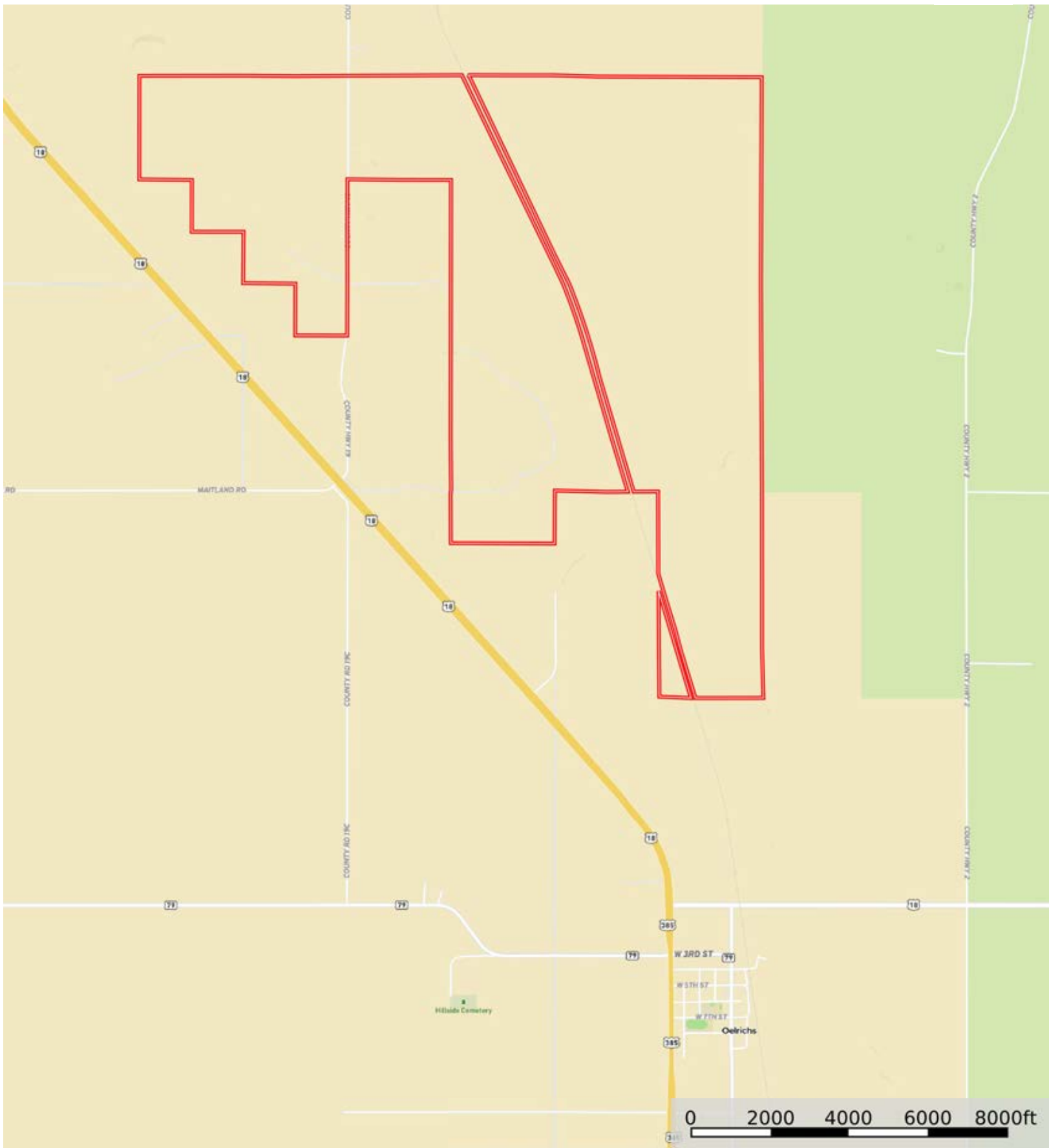



L-2400058

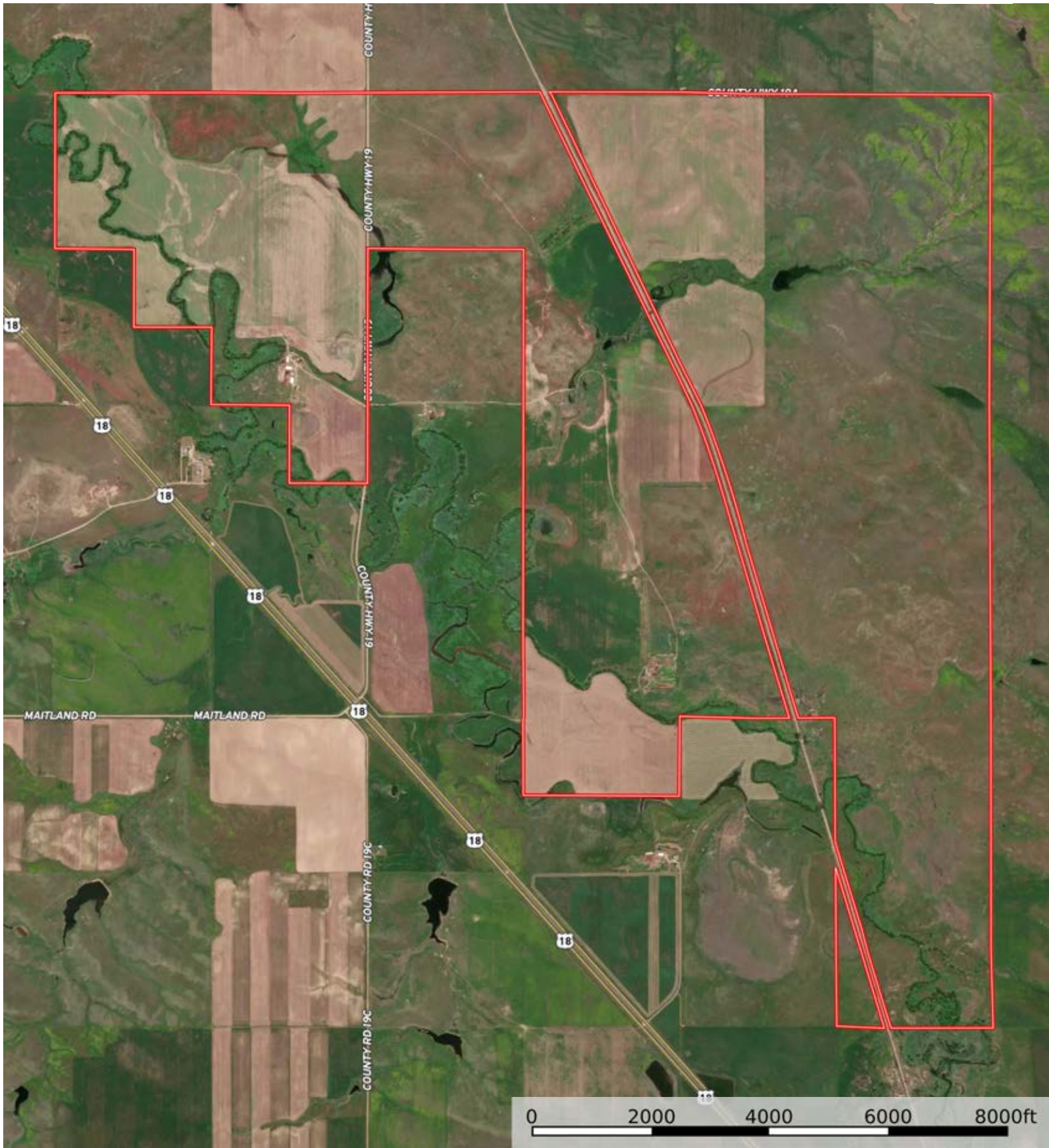
Fall River County, South Dakota, 2973.36 AC +/-



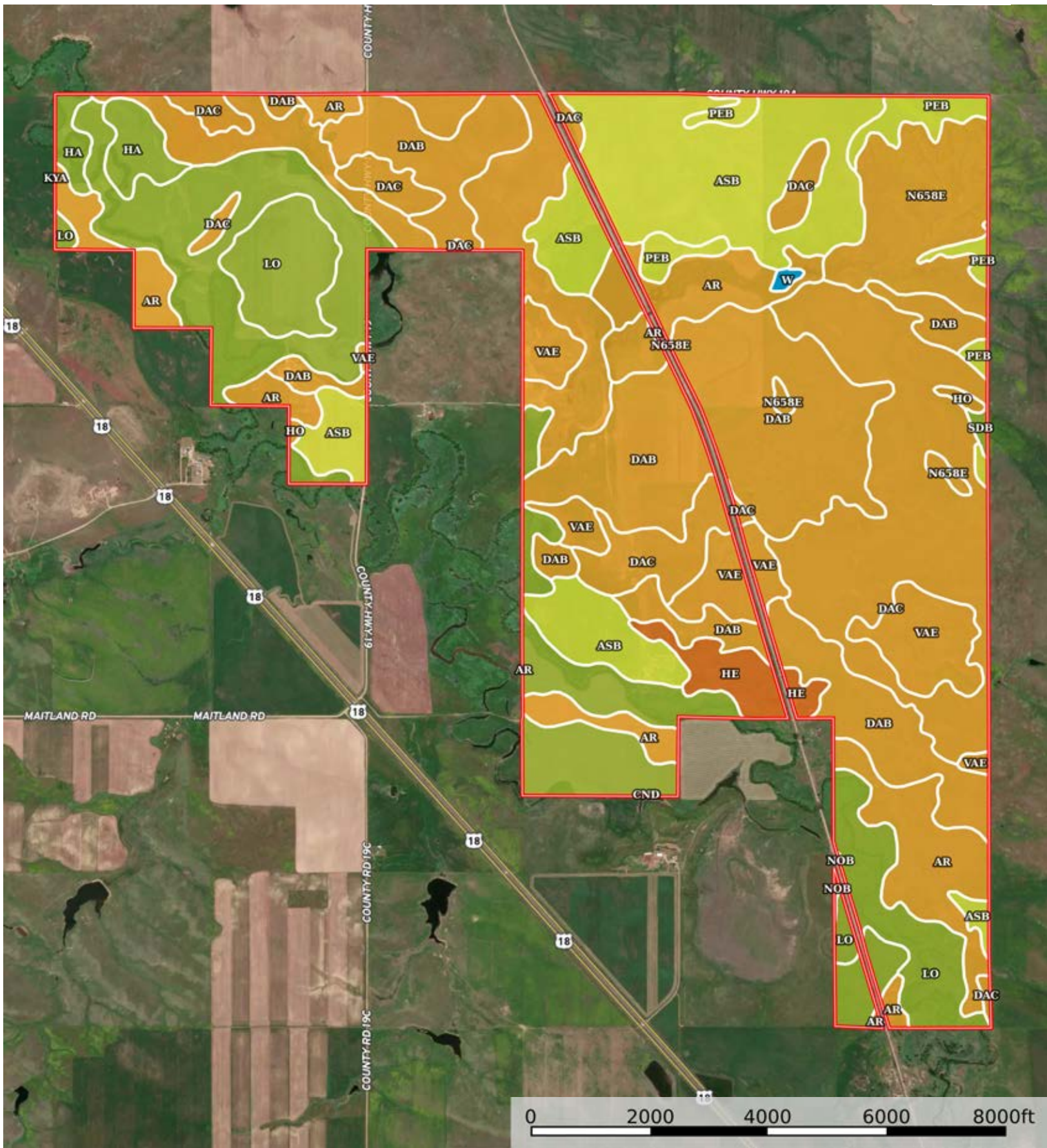
 Boundary


L-2400058

Fall River County, South Dakota, 2973.36 AC +/-



 Boundary



 Boundary

|  All Polygons 2978.69 ac

SOIL CODE	SOIL DESCRIPTION	ACRES	%	CPI	NCCPI	CAP
DaC	Dailey fine sand, 6 to 12 percent slopes	604.0 6	20.28	11	14	6e
DaB	Dailey fine sand, 0 to 6 percent slopes	591.1 2	19.85	20	14	6e
Lo	Lohmiller silty clay loam	470.3 4	15.79	75	39	3c
AsB	Ascalon fine sandy loam, 0 to 6 percent slopes	390.2 5	13.1	76	37	4e
Ar	Arvada loam, 0 to 3 percent slopes	258.7 7	8.69	13	11	6s
VaE	Valent loamy fine sand, 6 to 25 percent slopes	217.3 1	7.3	8	13	6e
N658E	Pierre silty clay, 6 to 25 percent slopes	168.8	5.67	31	15	6e
Ha	Haverson loam, 0 to 2 percent slopes, rarely flooded	126.4 6	4.25	81	36	3c
PeB	Pierre clay, 2 to 6 percent slopes	62.21	2.09	30	20	4e
He	Hisle-Slickspots complex, 0 to 6 percent slopes	49.02	1.65	9	7	7e
NoB	Norka silt loam, 2 to 6 percent slopes	27.24	0.91	82	52	3e
Ho	Hoven silt loam, 0 to 1 percent slopes	5.64	0.19	15	8	6s
SdB	Savo silt loam, 2 to 6 percent slopes	3.77	0.13	80	45	3e
W	Water	3.22	0.11	0	-	8
CnD	Colby-Norka silt loams, 6 to 15 percent slopes	0.4	0.01	42	48	6e
KyA	Kyle clay, 0 to 2 percent slopes	0.08	0.0	54	27	4e
TOTALS		2978. 69(*)	100%	36.57	21.99	5.08

(*) Total acres may differ in the second decimal compared to the sum of each acreage soil. This is due to a round error because we only show the acres of each soil with two decimal.

|  Boundary 1437.03 ac

SOIL CODE	SOIL DESCRIPTION	ACRES	%	CPI	NCCPI	CAP
Lo	Lohmiller silty clay loam	371.6 4	25.86	75	39	3c
DaB	Dailey fine sand, 0 to 6 percent slopes	267.9 6	18.65	20	14	6e
DaC	Dailey fine sand, 6 to 12 percent slopes	235.2 3	16.37	11	14	6e
VaE	Valent loamy fine sand, 6 to 25 percent slopes	140.4 6	9.77	8	13	6e
AsB	Ascalon fine sandy loam, 0 to 6 percent slopes	133.0 6	9.26	76	37	4e

Ha	Haverson loam, 0 to 2 percent slopes, rarely flooded	126.4 6	8.8	81	36	3c
Ar	Arvada loam, 0 to 3 percent slopes	101.2 3	7.04	13	11	6s
He	Hisle-Slickspots complex, 0 to 6 percent slopes	40.25	2.8	9	7	7e
N658E	Pierre silty clay, 6 to 25 percent slopes	18.45	1.28	31	15	6e
Ho	Hoven silt loam, 0 to 1 percent slopes	1.81	0.13	15	8	6s
CnD	Colby-Norka silt loams, 6 to 15 percent slopes	0.4	0.03	42	48	6e
KyA	Kyle clay, 0 to 2 percent slopes	0.08	0.01	54	27	4e
TOTALS		1437. 03(*)	100%	41.47	24.04	4.8

(*) Total acres may differ in the second decimal compared to the sum of each acreage soil. This is due to a round error because we only show the acres of each soil with two decimal.

| Boundary 24.93 ac

SOIL CODE	SOIL DESCRIPTION	ACRES	%	CPI	NCCPI	CAP
NoB	Norka silt loam, 2 to 6 percent slopes	16.28	65.3	82	52	3e
Lo	Lohmiller silty clay loam	7.63	30.61	75	39	3c
Ar	Arvada loam, 0 to 3 percent slopes	1.02	4.09	13	11	6s
TOTALS		24.93(*)	100%	77.03	46.34	3.12

(*) Total acres may differ in the second decimal compared to the sum of each acreage soil. This is due to a round error because we only show the acres of each soil with two decimal.

| Boundary 1516.73 ac

SOIL CODE	SOIL DESCRIPTION	ACRES	%	CPI	NCCPI	CAP
DaC	Dailey fine sand, 6 to 12 percent slopes	368.8 3	24.32	11	14	6e
DaB	Dailey fine sand, 0 to 6 percent slopes	323.1 6	21.31	20	14	6e
AsB	Ascalon fine sandy loam, 0 to 6 percent slopes	257.1 9	16.96	76	37	4e
Ar	Arvada loam, 0 to 3 percent slopes	156.5 2	10.32	13	11	6s
N658E	Pierre silty clay, 6 to 25 percent slopes	150.3 5	9.91	31	15	6e
Lo	Lohmiller silty clay loam	91.07	6.0	75	39	3c
VaE	Valent loamy fine sand, 6 to 25 percent slopes	76.85	5.07	8	13	6e
PeB	Pierre clay, 2 to 6 percent slopes	62.21	4.1	30	20	4e
NoB	Norka silt loam, 2 to 6 percent slopes	10.96	0.72	82	52	3e
He	Hisle-Slickspots complex, 0 to 6 percent slopes	8.77	0.58	9	7	7e
Ho	Hoven silt loam, 0 to 1 percent slopes	3.83	0.25	15	8	6s

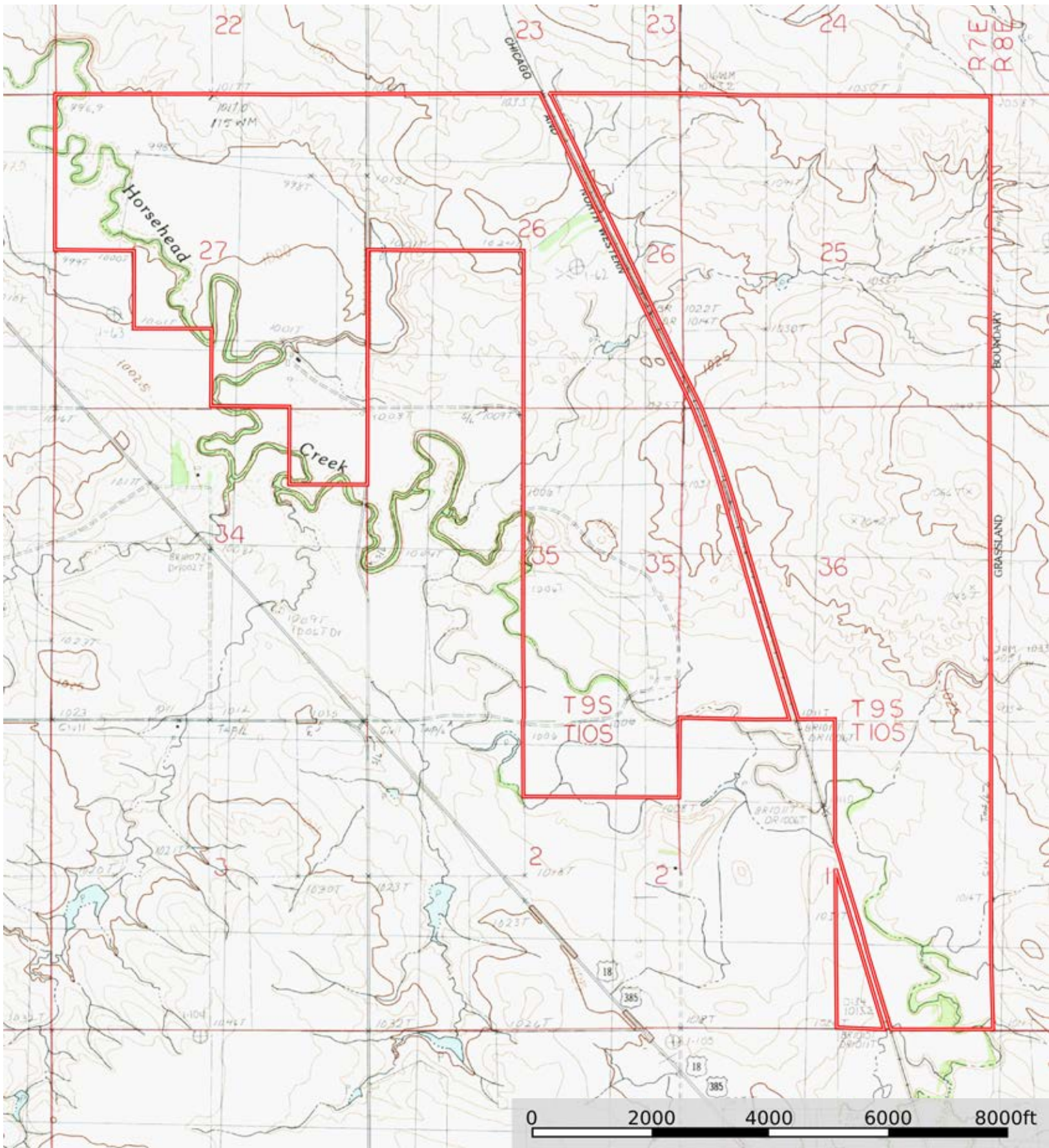
SdB	Savo silt loam, 2 to 6 percent slopes	3.77	0.25	80	45	3e
W	Water	3.22	0.21	0	-	8
TOTALS		1516.73(*)	100%	31.26	19.65	5.38


(*) Total acres may differ in the second decimal compared to the sum of each acreage soil. This is due to a round error because we only show the acres of each soil with two decimal.



L-2400058

Fall River County, South Dakota, 2973.36 AC +/-



 Boundary