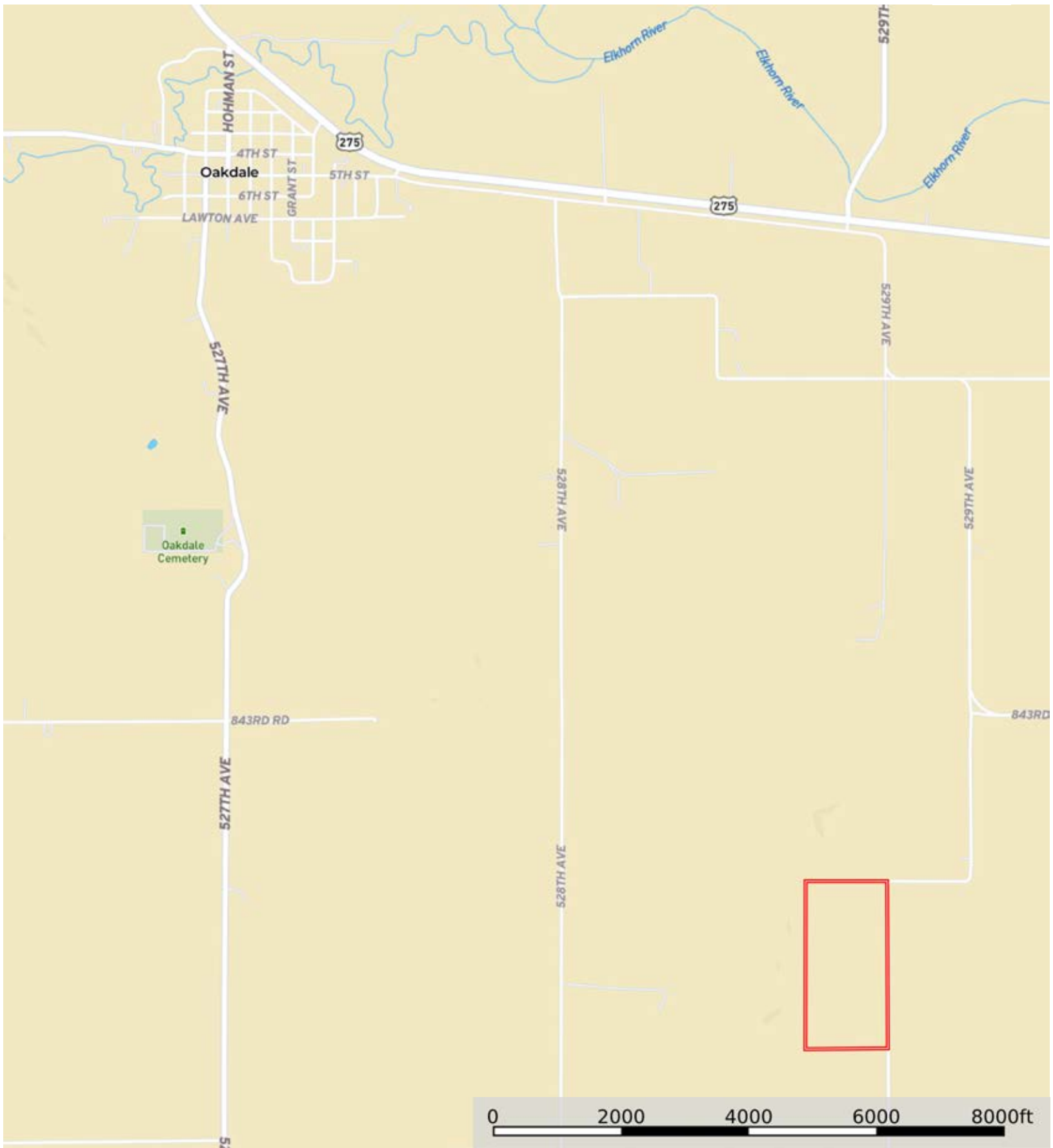



L-2400072

Antelope County, Nebraska, 77.48 AC +/-




 Boundary

L-2400072

Antelope County, Nebraska, 77.48 AC +/-




 Boundary



L-2400072

Antelope County, Nebraska, 77.48 AC +/-



 Boundary

|  Boundary 77.72 ac

SOIL CODE	SOIL DESCRIPTION	ACRES	%	CPI	NCCPI	CAP
6811	Moody silty clay loam, 2 to 6 percent slopes	36.01	46.34	67	75	2e
6694	Crofton-Nora complex, 6 to 11 percent slopes, eroded	19.69	25.34	47	66	4e
6697	Crofton-Nora complex, 17 to 30 percent slopes	17.4	22.39	34	41	6e
6789	Crofton-Nora complex, 11 to 17 percent slopes, eroded	4.62	5.95	48	61	4e
TOTALS		77.72(*)	100%	53.42	64.28	3.52

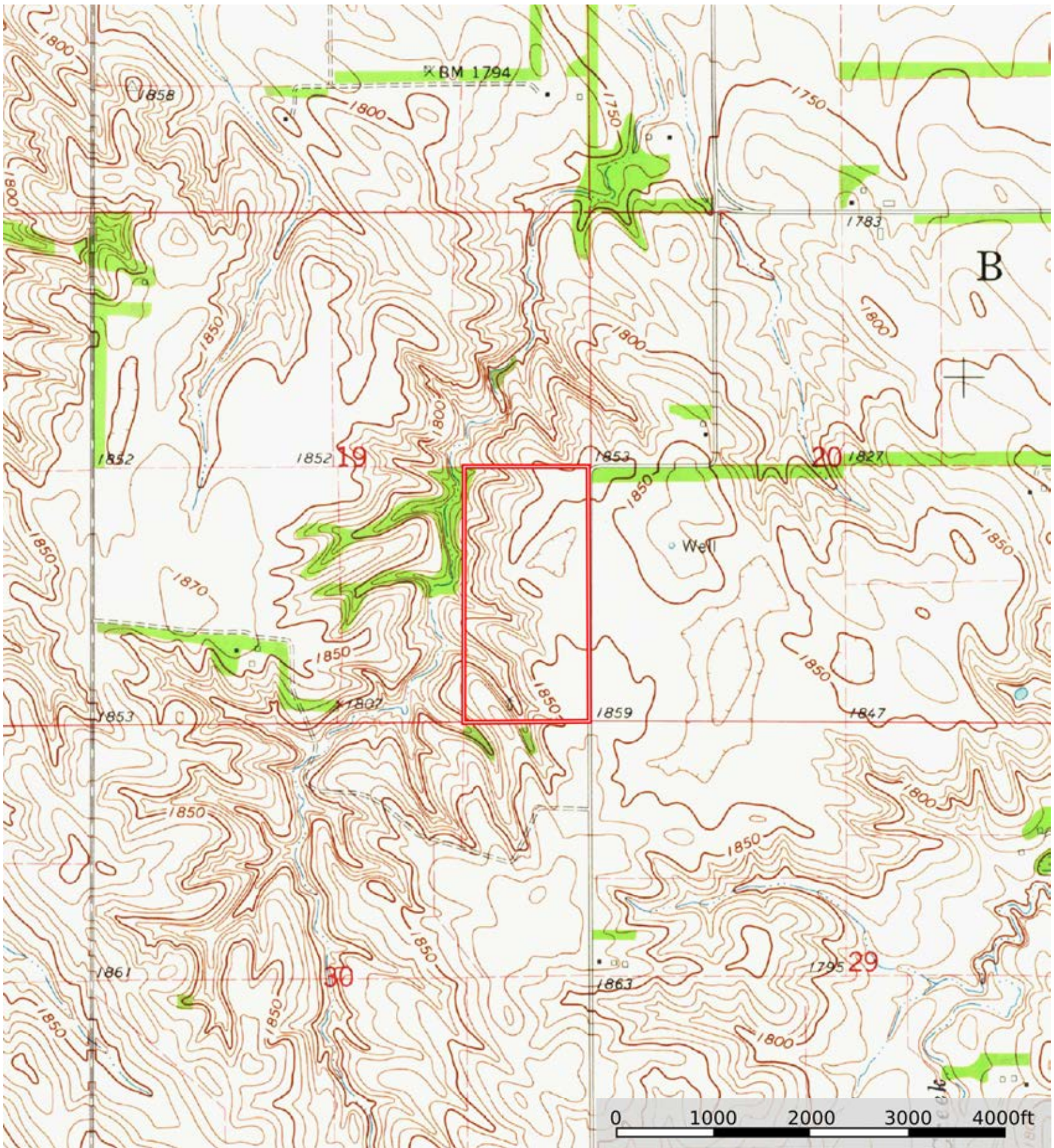
(\*) Total acres may differ in the second decimal compared to the sum of each acreage soil. This is due to a round error because we only show the acres of each soil with two decimal.





L-2400072

Antelope County, Nebraska, 77.48 AC +/-



Boundary



The information contained herein was obtained from sources deemed to be reliable. Land id™ Services makes no warranties or guarantees as to the completeness or accuracy thereof.