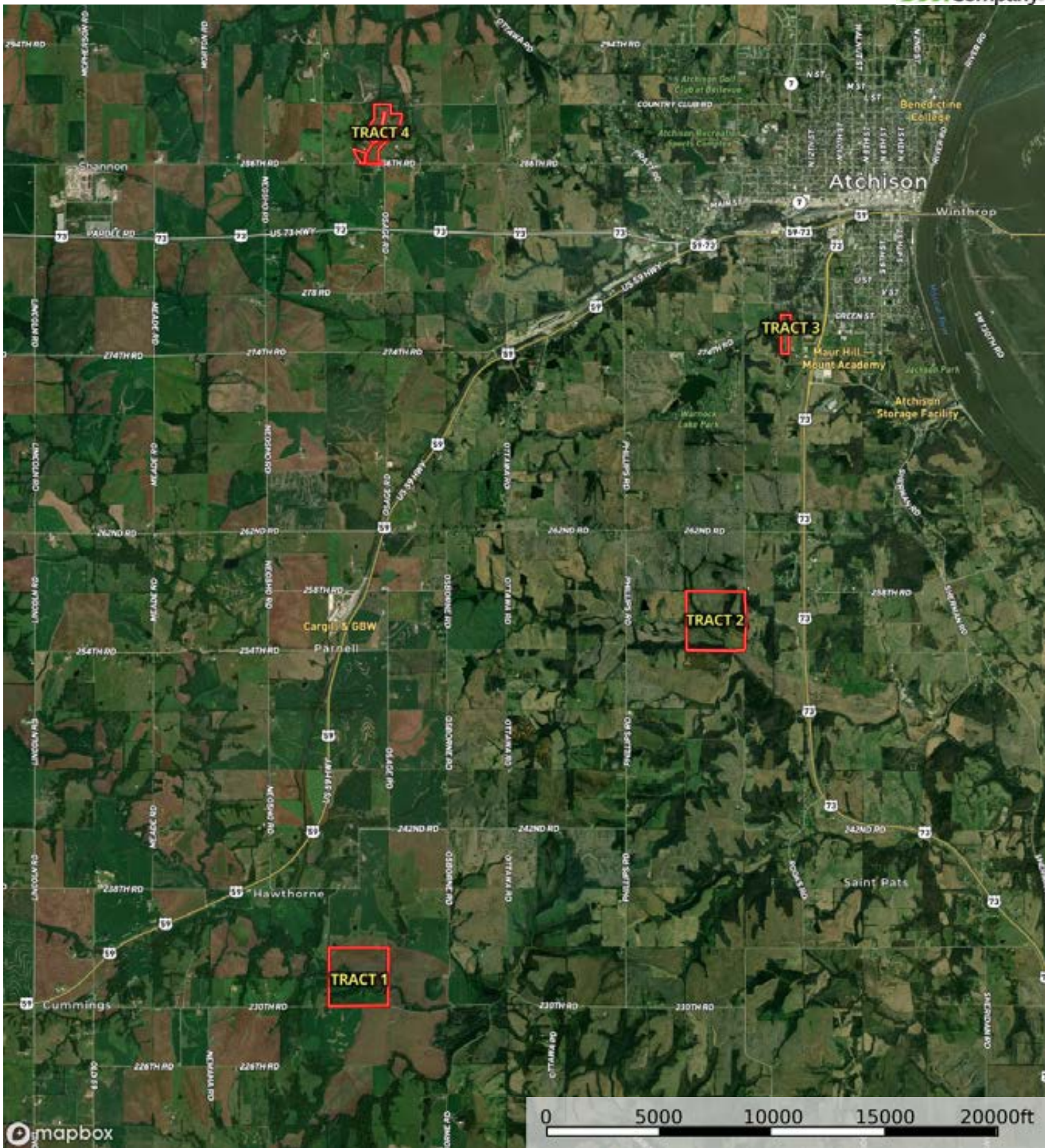



Boundary

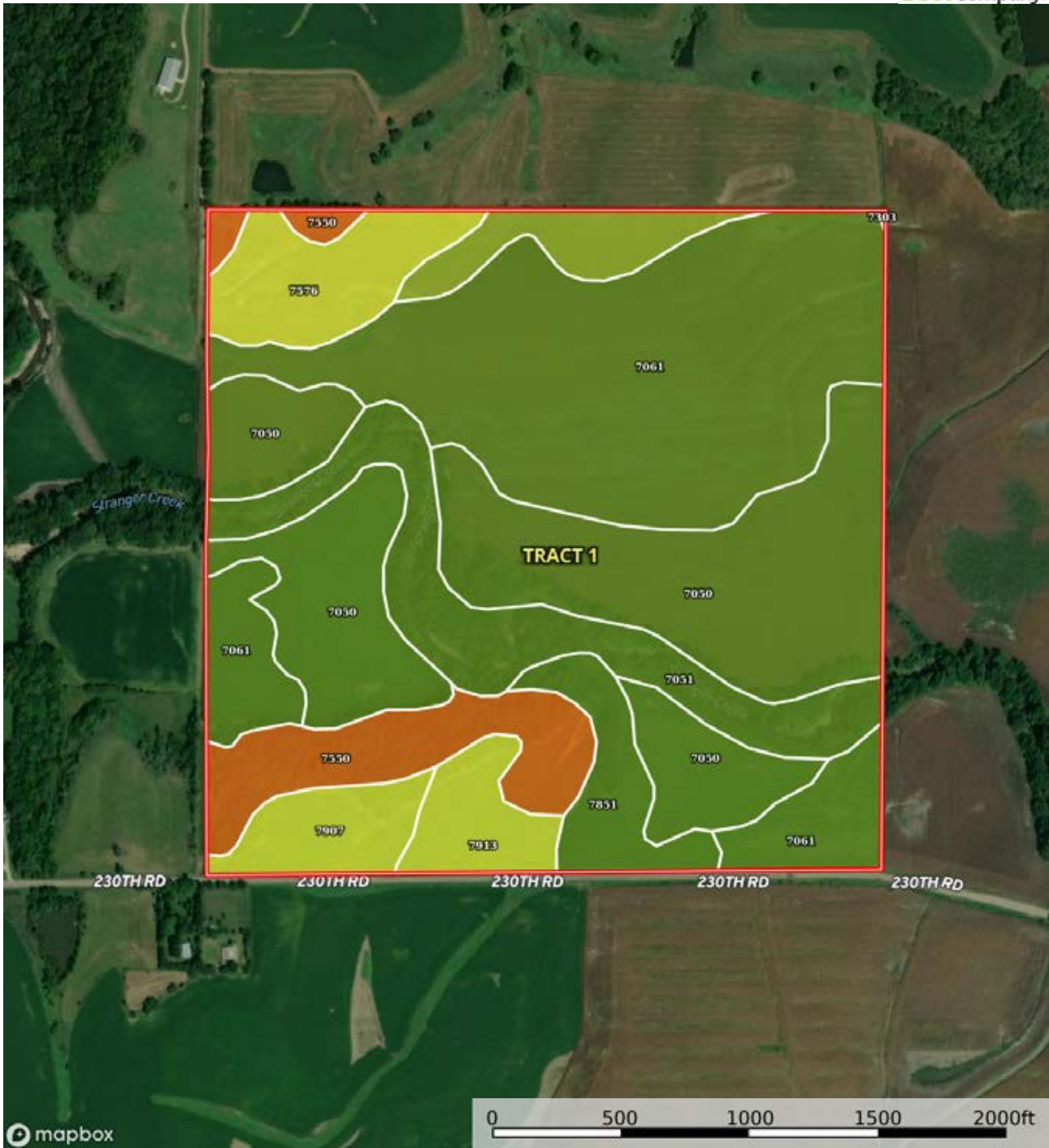


L-2400079

Atchison County, Kansas, 385.99 AC +/-



 Boundary



Boundary

|  Boundary 156.74 ac

SOIL CODE	SOIL DESCRIPTION	ACRES	%	CPI	NCCPI	CAP
7061	Muscotah silty clay loam, occasionally flooded	52.62	33.57	0	67	2w
7050	Kennebec silt loam, occasionally flooded	46.43	29.62	0	94	2w
7051	Kennebec silt loam, frequently flooded	15.81	10.09	0	76	2w
7550	Rosendale-Bendena silty clay loams, 3 to 40 percent slopes	11.79	7.52	0	32	7e
7576	Shelby clay loam, 8 to 12 percent slopes, eroded	8.45	5.39	0	62	4e
7851	Judson silt loam, 1 to 5 percent slopes	6.12	3.9	0	78	2e
7907	Armster clay loam, 8 to 12 percent slopes, eroded	5.33	3.4	0	62	4e
7303	Martin silty clay loam, 3 to 7 percent slopes, eroded	5.18	3.3	0	47	3e
7913	Armster clay loam, 12 to 20 percent slopes, eroded	5.01	3.2	0	58	4e
TOTALS		156.74(*)	100%	-	72.31	2.65

(*) Total acres may differ in the second decimal compared to the sum of each acreage soil. This is due to a round error because we only show the acres of each soil with two decimal.



L-2400079

Atchison County, Kansas, 385.99 AC +/-



Boundary

L-2400079

Atchison County, Kansas, 385.99 AC +/-



Boundary



The information contained herein was obtained from sources deemed to be reliable. Land id™ Services makes no warranties or guarantees as to the completeness or accuracy thereof.

|  Boundary 157.71 ac

SOIL CODE	SOIL DESCRIPTION	ACRES	%	CPI	NCCPI	CAP
7971	Palermo-Knox complex, 10 to 18 percent slopes	41.76	26.48	0	77	4e
7851	Judson silt loam, 1 to 5 percent slopes	32.14	20.38	0	78	2e
7051	Kennebec silt loam, frequently flooded	28.89	18.32	0	76	2w
7951	Gosport silty clay loam, 25 to 45 percent slopes	19.93	12.64	0	11	7e
7912	Armster clay loam, 12 to 20 percent slopes	16.64	10.55	0	50	6e
7910	Armster clay loam, 6 to 12 percent slopes	12.07	7.65	0	52	4e
7052	Kennebec-Colo silt loams, occasionally flooded	5.95	3.77	0	85	2w
7959	Knox-Gosport complex, 10 to 30 percent slopes	0.33	0.21	0	61	6e
TOTALS		157.7 1(*)	100%	-	64.19	3.74

(*) Total acres may differ in the second decimal compared to the sum of each acreage soil. This is due to a round error because we only show the acres of each soil with two decimal.



L-2400079

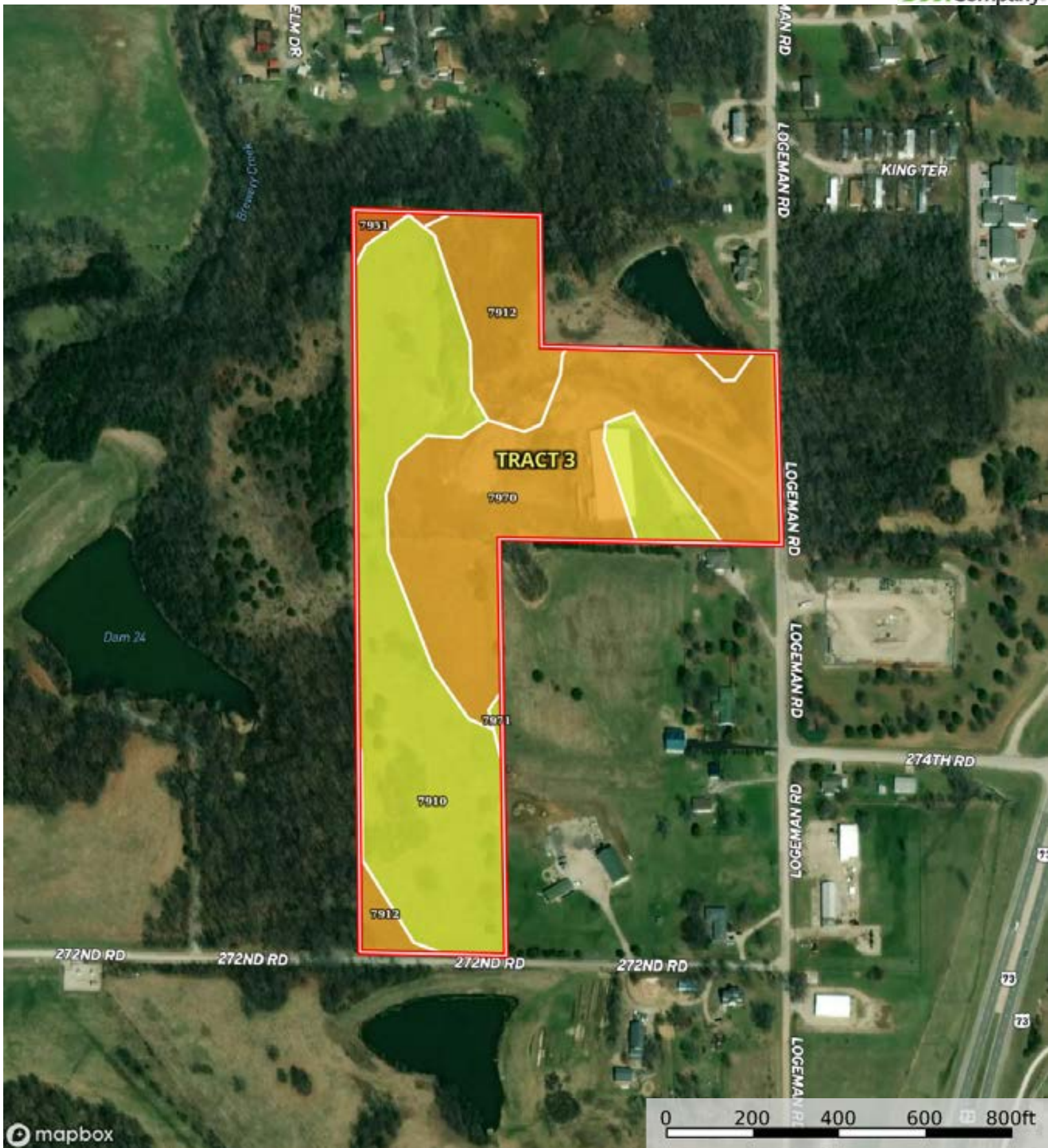
Atchison County, Kansas, 385.99 AC +/-



Boundary

L-2400079

Atchison County, Kansas, 385.99 AC +/-



mapbox

0 200 400 600 800ft

Boundary

The information contained herein was obtained from sources deemed to be reliable. Land id™ Services makes no warranties or guarantees as to the completeness or accuracy thereof.

|  Boundary 20.65 ac

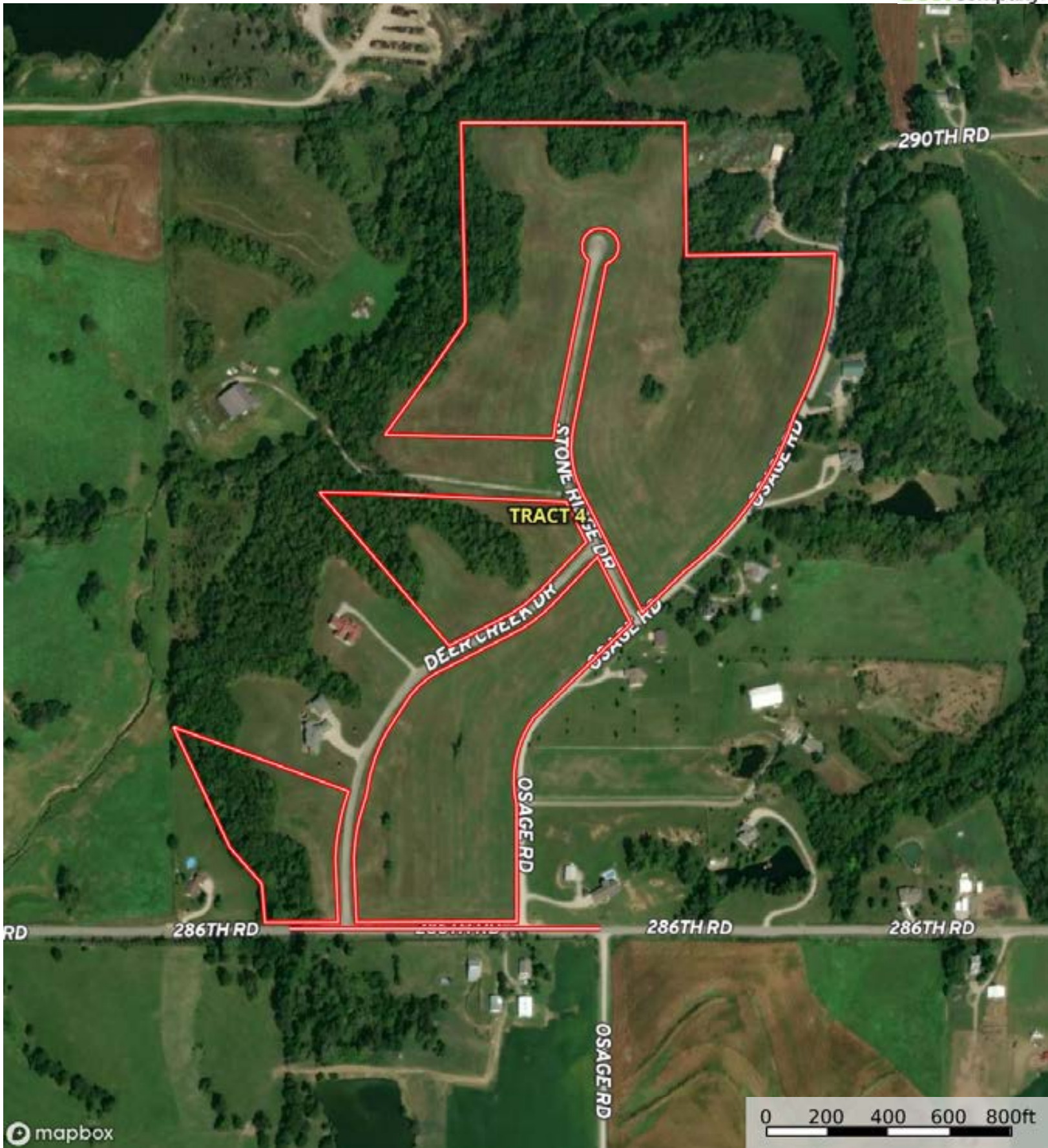
SOIL CODE	SOIL DESCRIPTION	ACRES	%	CPI	NCCPI	CAP
7910	Armster clay loam, 6 to 12 percent slopes	8.38	40.58	0	52	4e
7970	Palermo silty clay loam, 18 to 30 percent slopes	8.23	39.85	0	59	6e
7912	Armster clay loam, 12 to 20 percent slopes	2.83	13.7	0	50	6e
7971	Palermo-Knox complex, 10 to 18 percent slopes	0.99	4.79	0	77	4e
7951	Gosport silty clay loam, 25 to 45 percent slopes	0.22	1.07	0	11	7e
TOTALS		20.65(*)	100%	-	55.28	5.1

(*) Total acres may differ in the second decimal compared to the sum of each acreage soil. This is due to a round error because we only show the acres of each soil with two decimal.

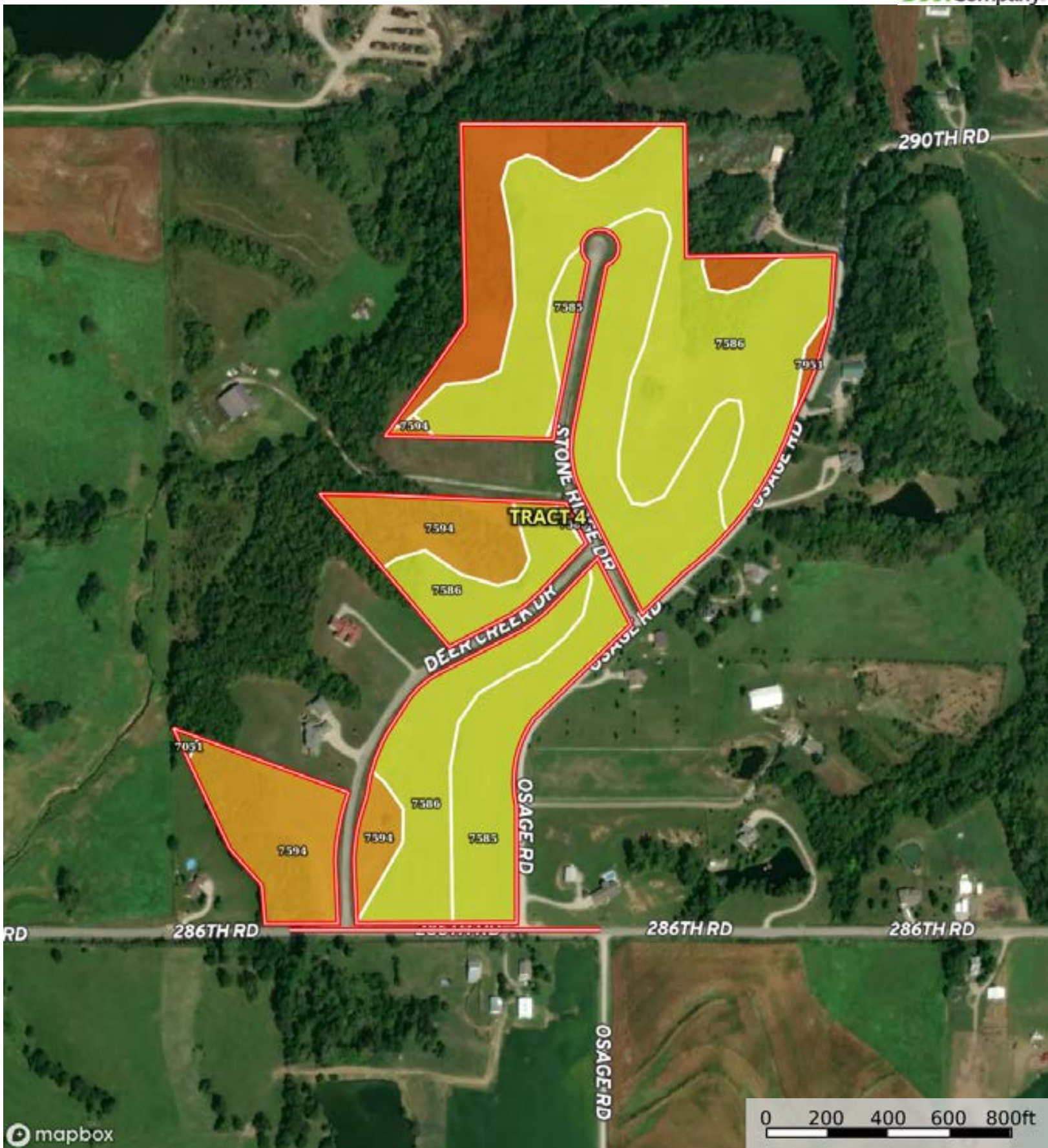


L-2400079

Atchison County, Kansas, 385.99 AC +/-



Boundary



Boundary

|  All Polygons 50.19 ac

SOIL CODE	SOIL DESCRIPTION	ACRES	%	CPI	NCCPI	CAP
7586	Shelby clay loam, 7 to 15 percent slopes, eroded	23.24	46.31	0	61	4e
7585	Shelby clay loam, 7 to 12 percent slopes	12.96	25.83	0	66	4e
7594	Shelby-Steinauer loams, 12 to 25 percent slopes	8.47	16.88	0	56	6e
7951	Gosport silty clay loam, 25 to 45 percent slopes	5.44	10.84	0	11	7e
7051	Kennebec silt loam, frequently flooded	0.08	0.16	0	76	2w
TOTALS		50.19(*)	100%	-	56.06	4.66

(*) Total acres may differ in the second decimal compared to the sum of each acreage soil. This is due to a round error because we only show the acres of each soil with two decimal.

|  Boundary 28.54 ac

SOIL CODE	SOIL DESCRIPTION	ACRES	%	CPI	NCCPI	CAP
7586	Shelby clay loam, 7 to 15 percent slopes, eroded	15.31	53.66	0	61	4e
7585	Shelby clay loam, 7 to 12 percent slopes	7.65	26.81	0	66	4e
7951	Gosport silty clay loam, 25 to 45 percent slopes	5.44	19.07	0	11	7e
7594	Shelby-Steinauer loams, 12 to 25 percent slopes	0.14	0.49	0	56	6e
TOTALS		28.54(*)	100%	-	52.8	4.58

(*) Total acres may differ in the second decimal compared to the sum of each acreage soil. This is due to a round error because we only show the acres of each soil with two decimal.

|  Boundary 11.52 ac

SOIL CODE	SOIL DESCRIPTION	ACRES	%	CPI	NCCPI	CAP
7586	Shelby clay loam, 7 to 15 percent slopes, eroded	5.24	45.49	0	61	4e
7585	Shelby clay loam, 7 to 12 percent slopes	5.23	45.4	0	66	4e
7594	Shelby-Steinauer loams, 12 to 25 percent slopes	1.05	9.11	0	56	6e
TOTALS		11.52(*)	100%	-	62.81	4.18

(*) Total acres may differ in the second decimal compared to the sum of each acreage soil. This is due to a round error because we only show the acres of each soil with two decimal.

|  Boundary 5.76 ac

SOIL CODE	SOIL DESCRIPTION	ACRES	%	CPI	NCCPI	CAP
7594	Shelby-Steinauer loams, 12 to 25 percent slopes	2.99	51.91	0	56	6e
7586	Shelby clay loam, 7 to 15 percent slopes, eroded	2.69	46.7	0	61	4e
7585	Shelby clay loam, 7 to 12 percent slopes	0.08	1.39	0	66	4e
TOTALS		5.76(*)	100%	-	58.47	5.04

(*) Total acres may differ in the second decimal compared to the sum of each acreage soil. This is due to a round error because we only show the acres of each soil with two decimal.

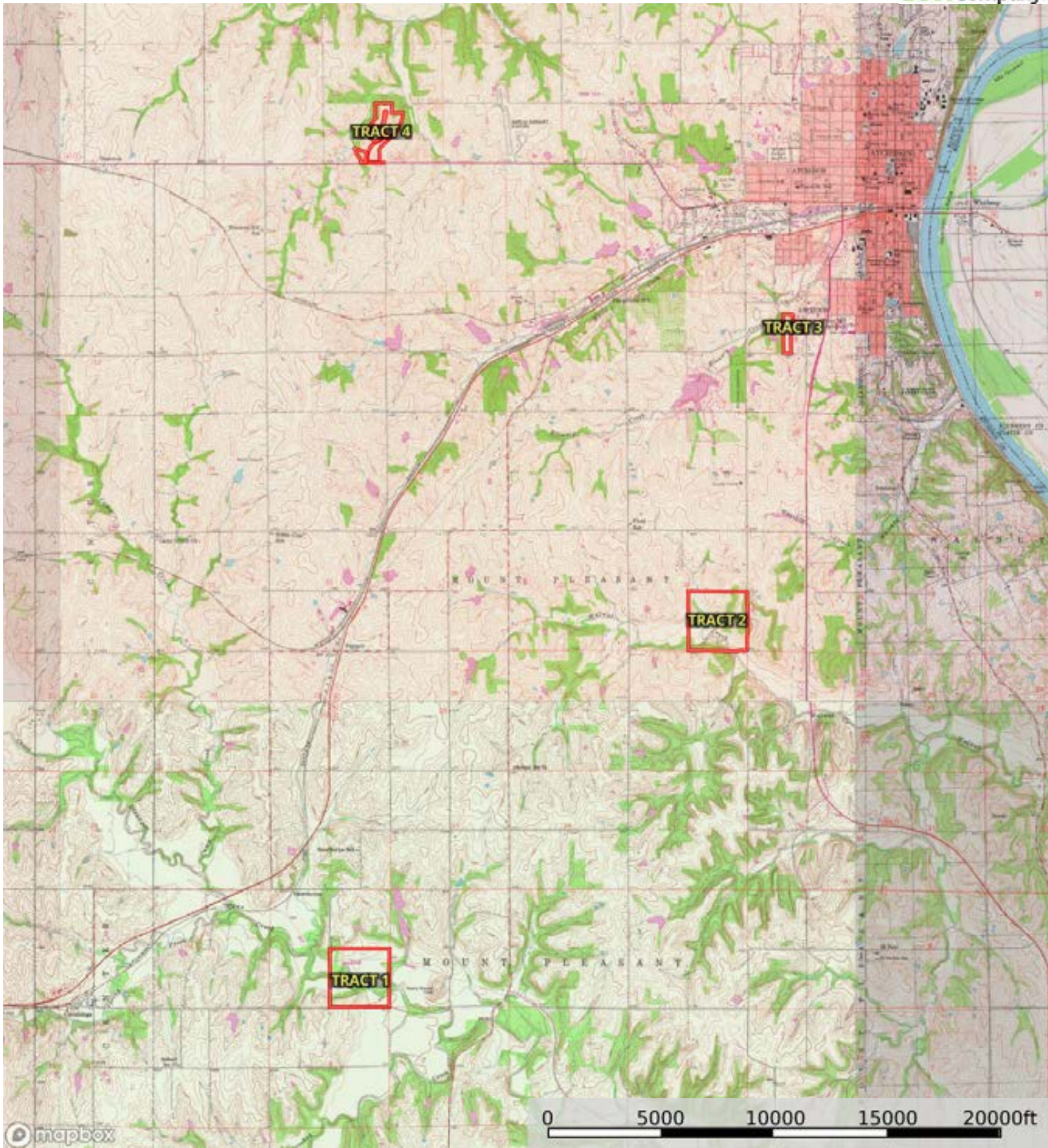



| Boundary 4.37 ac

SOIL CODE	SOIL DESCRIPTION	ACRES	%	CPI	NCCPI	CAP
7594	Shelby-Steinauer loams, 12 to 25 percent slopes	4.29	98.17	0	56	6e
7051	Kennebec silt loam, frequently flooded	0.08	1.83	0	76	2w
TOTALS		4.37(*)	100%	-	56.37	5.93

(*) Total acres may differ in the second decimal compared to the sum of each acreage soil. This is due to a round error because we only show the acres of each soil with two decimal.





 Boundary