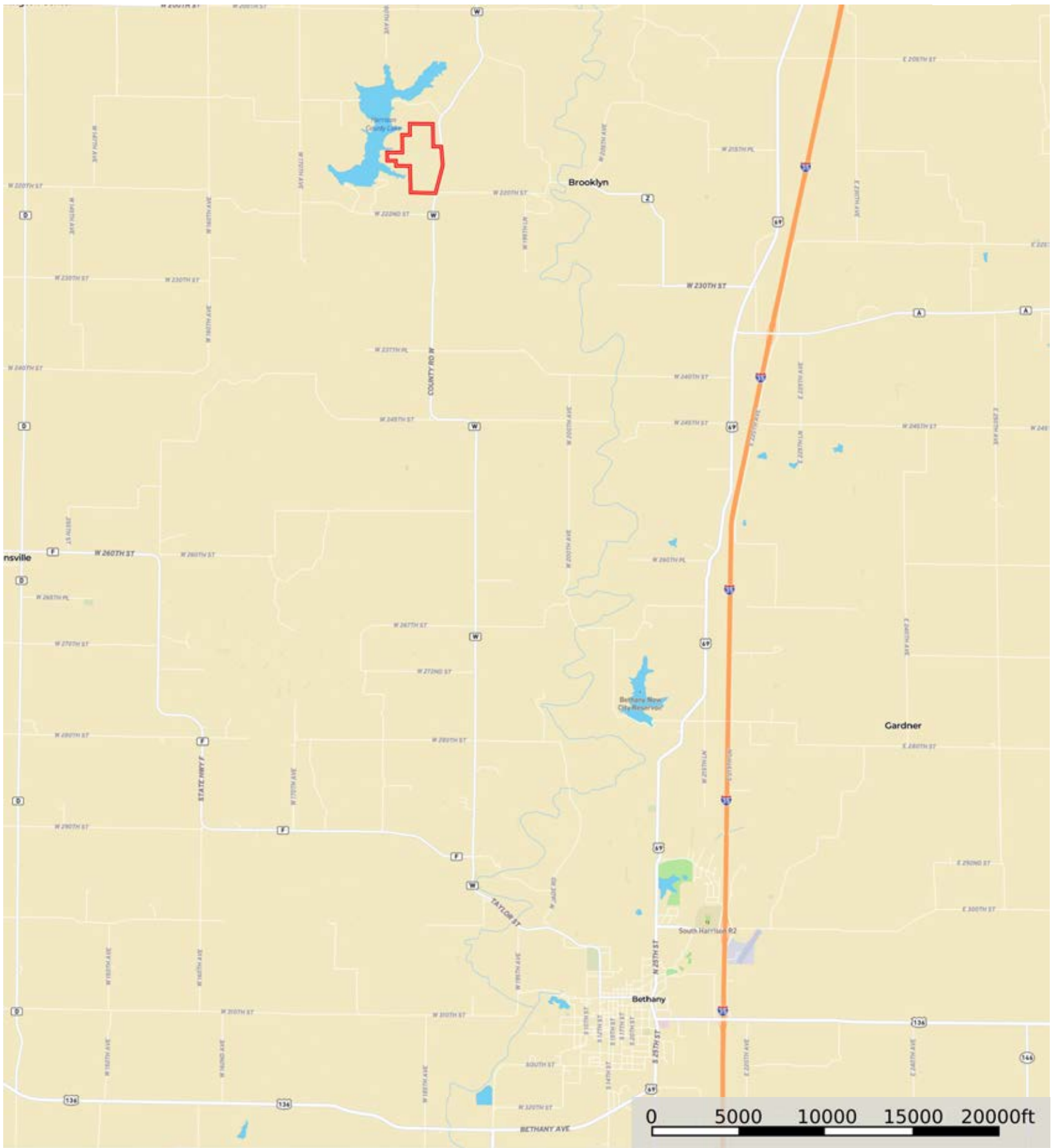



L-2400080

Harrison County, Missouri, 187.2 AC +/-



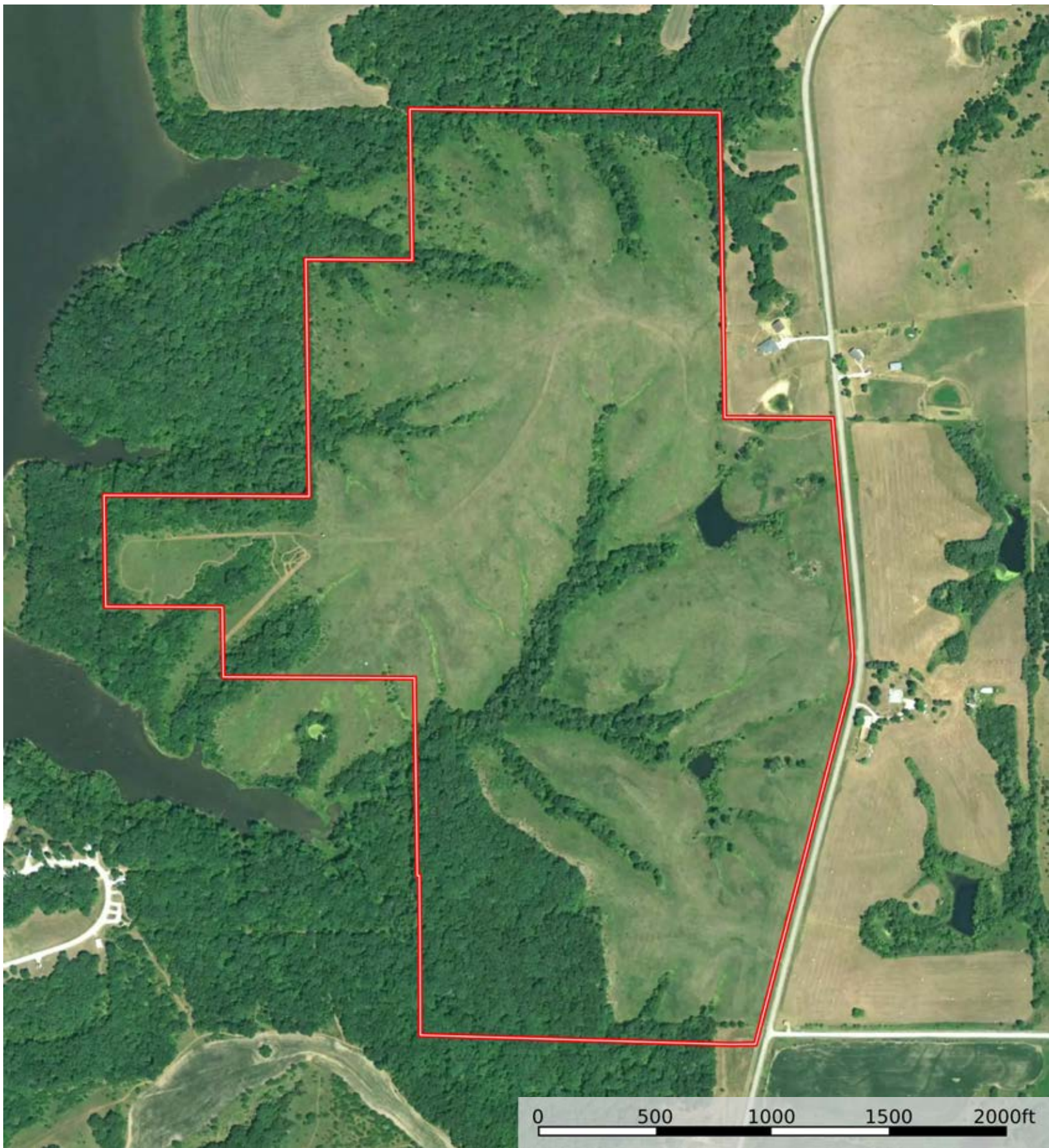
 Boundary



The information contained herein was obtained from sources deemed to be reliable. Land id™ Services makes no warranties or guarantees as to the completeness or accuracy thereof.

L-2400080

Harrison County, Missouri, 187.2 AC +/-




 Boundary



L-2400080

Harrison County, Missouri, 187.2 AC +/-



 Boundary

|  Boundary 177.57 ac

SOIL CODE	SOIL DESCRIPTION	ACRES	%	CPI	NCCPI	CAP
30057	Gara loam, 14 to 18 percent slopes	110.87	62.44	0	68	6e
30061	Gara loam, 5 to 9 percent slopes	52.08	29.33	0	77	3e
36099	Zook-Colo silty clay loams, 1 to 3 percent slopes, frequently flooded	7.85	4.42	0	66	3w
30169	Pershing silt loam, 5 to 9 percent slopes	6.77	3.81	0	73	3e
TOTALS		177.57(*)	100%	-	70.74	4.87

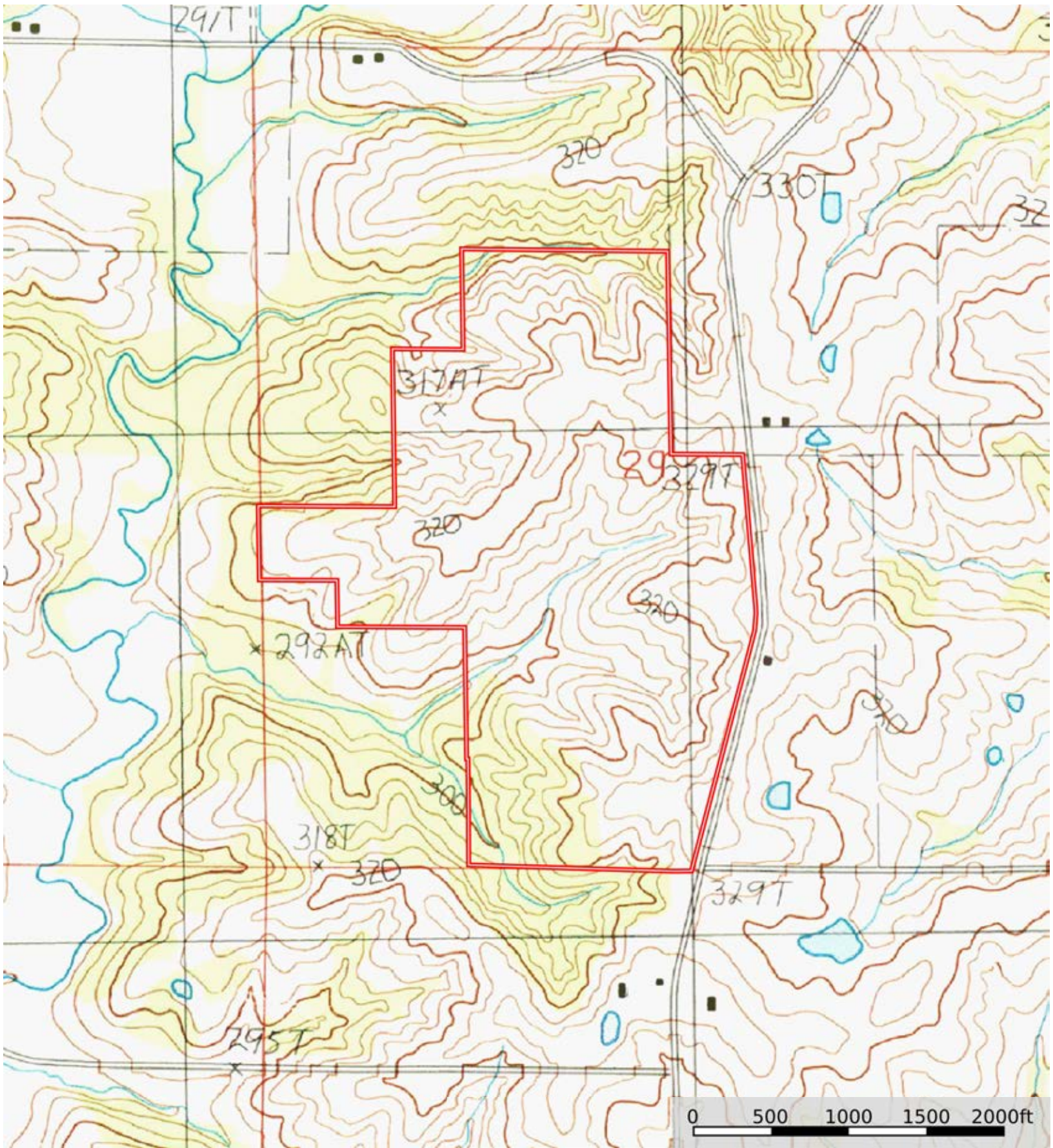
(\*) Total acres may differ in the second decimal compared to the sum of each acreage soil. This is due to a round error because we only show the acres of each soil with two decimal.






L-2400080

Harrison County, Missouri, 187.2 AC +/-



 Boundary