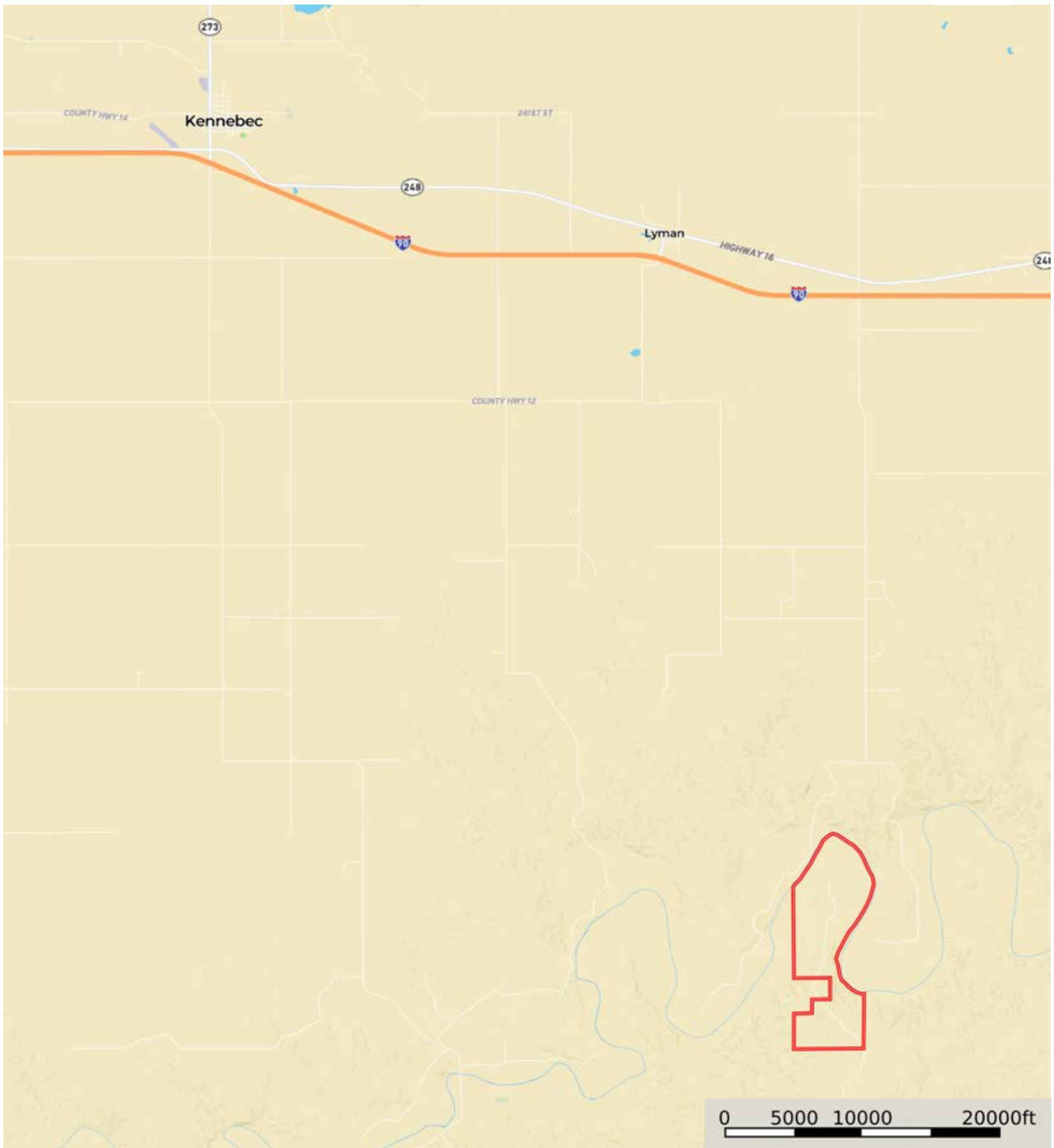



L-2400081

Tripp County, South Dakota, 1421.32 AC +/-



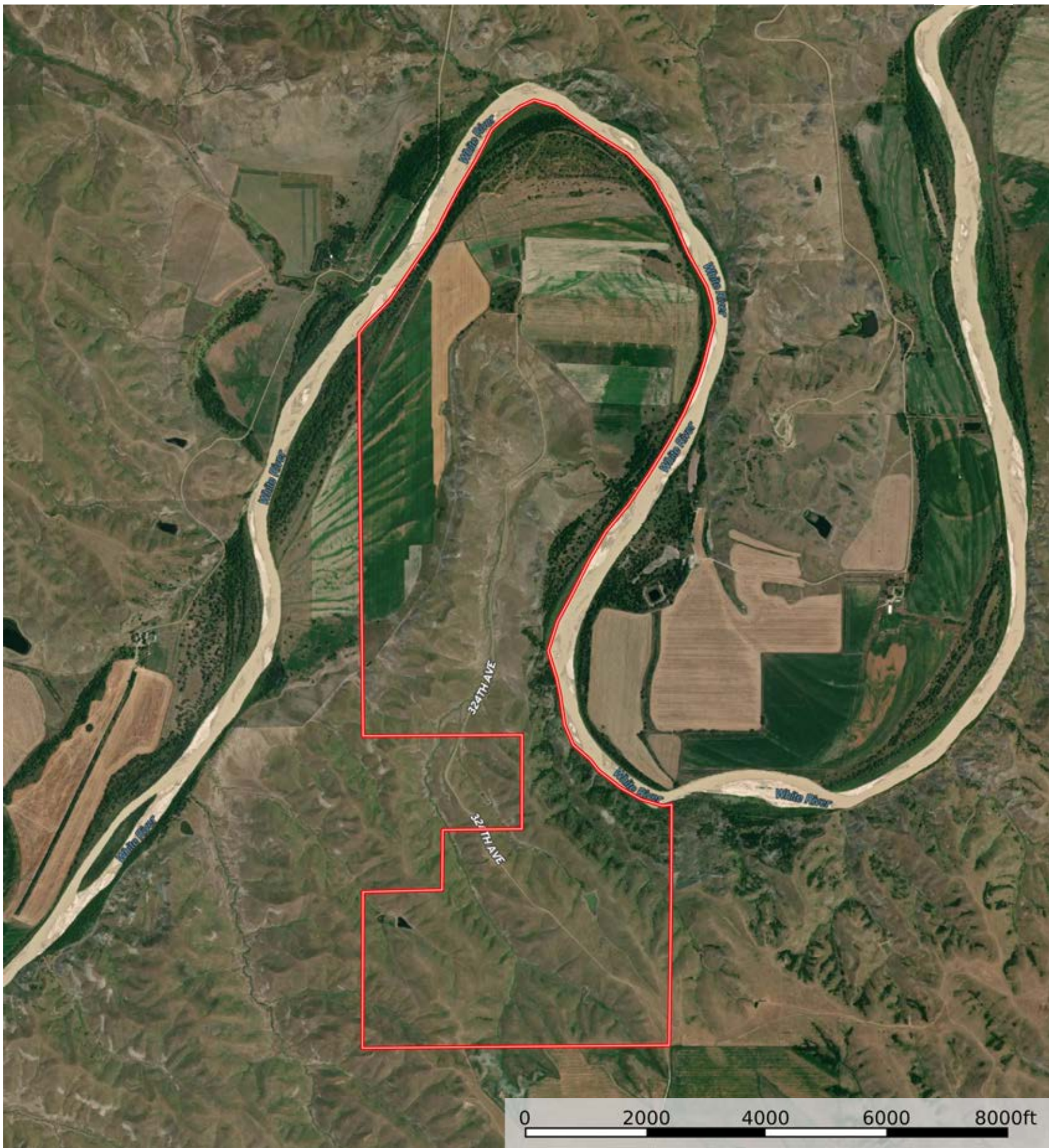
 Boundary



The information contained herein was obtained from sources deemed to be reliable. Land id™ Services makes no warranties or guarantees as to the completeness or accuracy thereof.

L-2400081

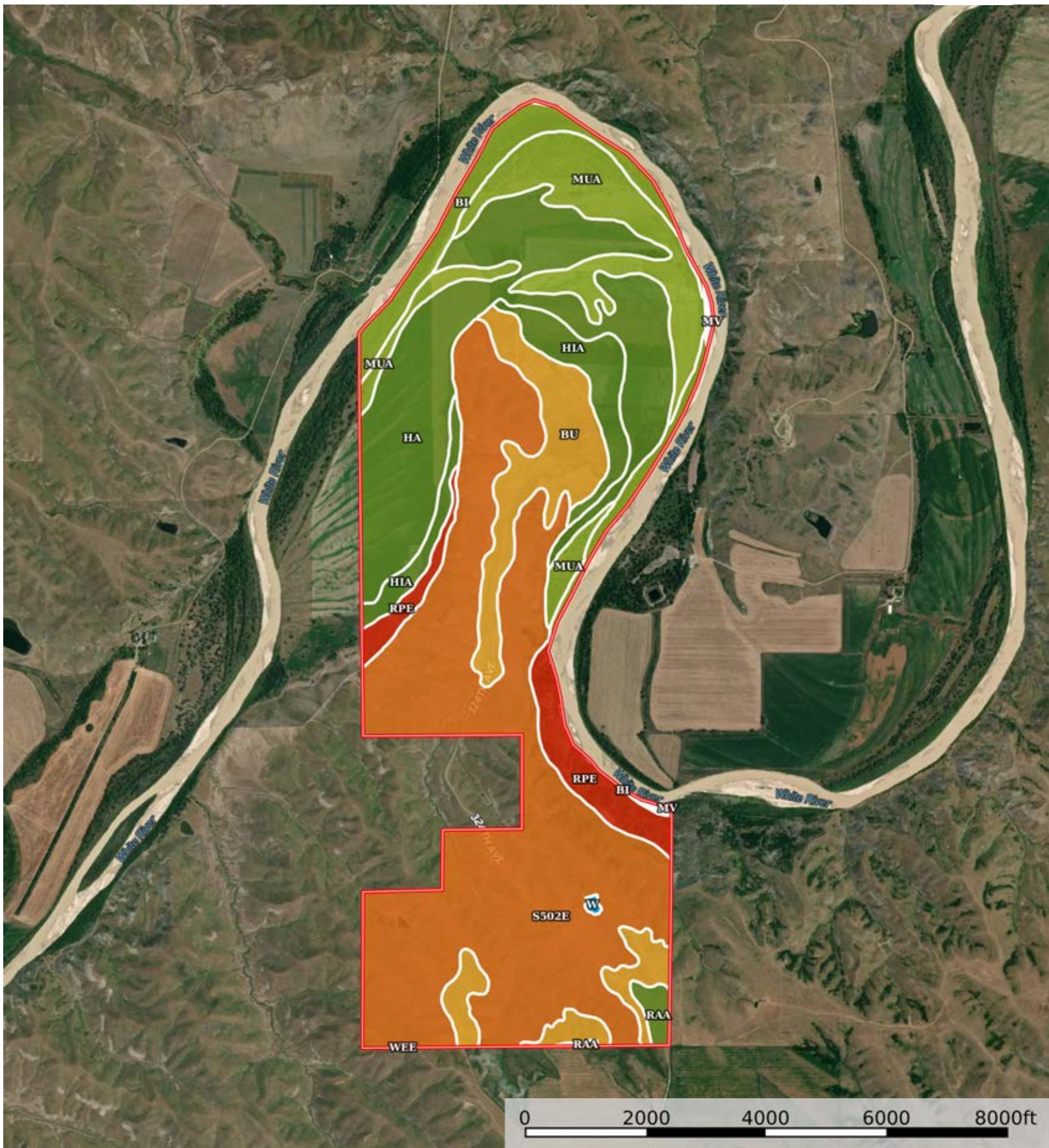
Tripp County, South Dakota, 1421.32 AC +/-




 Boundary

L-2400081

Tripp County, South Dakota, 1421.32 AC +/-



 Boundary

|  Boundary 1433.96 ac

SOIL CODE	SOIL DESCRIPTION	ACRES	%	CPI	NCCPI	CAP
S502E	Sansarc-Opal clays, 9 to 25 percent slopes	609.0 2	42.47	22	13	7e
Ha	Bigbend silt loam	293.1 2	20.44	81	36	2c
MuA	Munjor fine sandy loam, 0 to 3 percent slopes, rarely flooded	151.9 7	10.6	46	25	3e
Bu	Bullcreek clay, 0 to 6 percent slopes	103.5 4	7.22	13	22	6s
Bi	Bigbend-Inavale complex, 0 to 3 percent slopes, occasionally flooded	77.61	5.41	55	27	3w
HiA	Hilmoe silty clay, 0 to 3 percent slopes, rarely flooded	70.03	4.88	70	39	2s
RpE	Rock outcrop-Sansarc-Opal complex, 6 to 40 percent slopes	64.2	4.48	13	8	8e
WeE	Westover loam, 9 to 25 percent slopes	47.24	3.29	20	31	6e
RaA	Ree loam, 0 to 3 percent slopes	11.38	0.79	85	52	2c
W	Water	4.83	0.34	0	-	8
Mv	Munjor-Inavale complex, 0 to 3 percent slopes, occasionally flooded	1.02	0.07	46	21	3w
TOTALS		1433. 96(*)	100%	40.06	22.29	4.99









(\*) Total acres may differ in the second decimal compared to the sum of each acreage soil. This is due to a round error because we only show the acres of each soil with two decimal.

## Capability Legend

Increased Limitations and Hazards

Decreased Adaptability and Freedom of Choice Users

Land, Capability

								
	1	2	3	4	5	6	7	8
'Wild Life'	•	•	•	•	•	•	•	•
Forestry	•	•	•	•	•	•	•	
Limited	•	•	•	•	•	•	•	
Moderate	•	•	•	•	•	•		
Intense	•	•	•	•	•			
Limited	•	•	•	•				
Moderate	•	•	•					
Intense	•	•						
Very Intense	•							

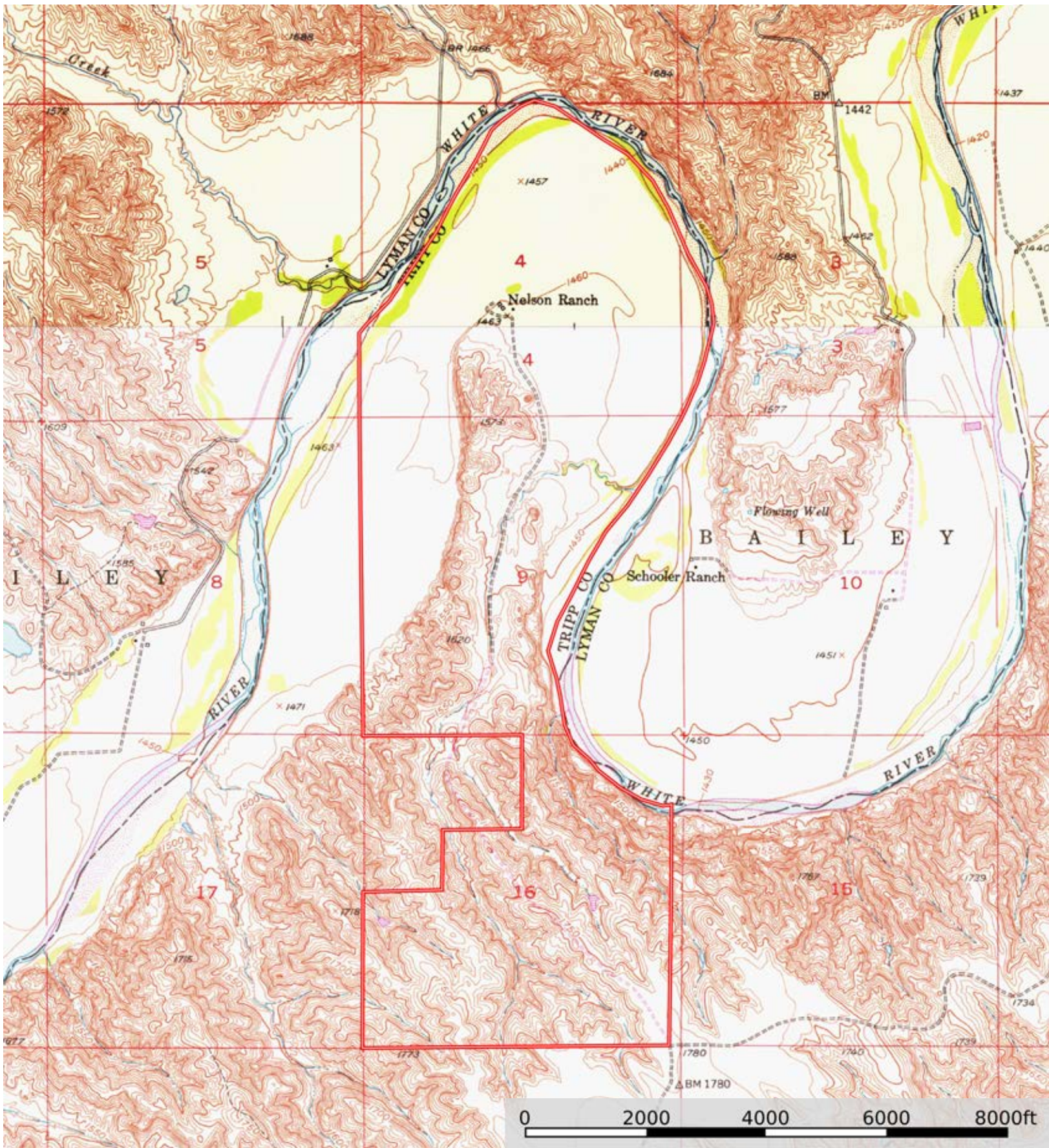
### Grazing Cultivation

(c) climatic limitations (e) susceptibility to erosion

(s) soil limitations within the rooting zone (w) excess of water

L-2400081

Tripp County, South Dakota, 1421.32 AC +/-



Boundary