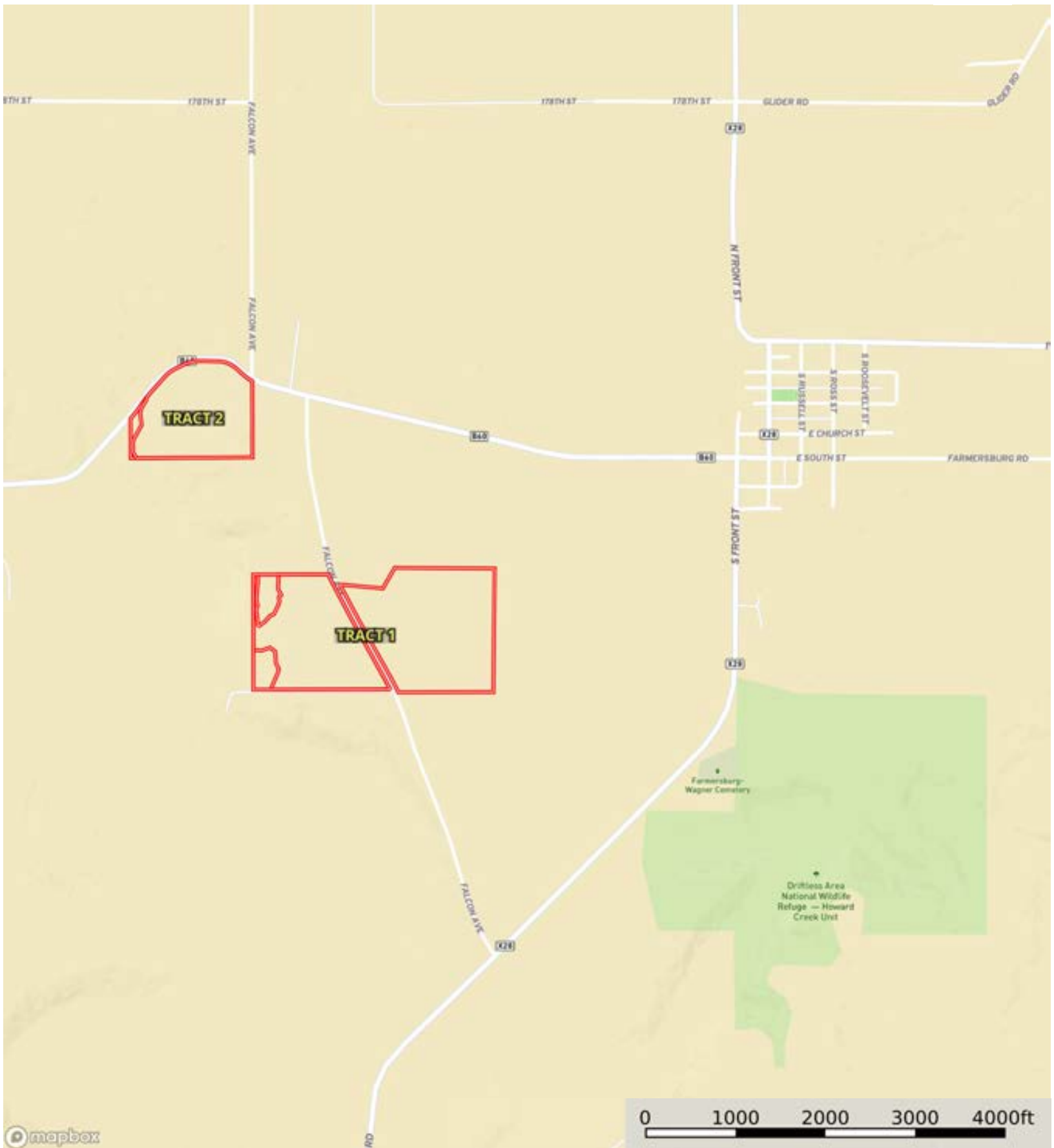


L-2400087  
Clayton County, Iowa, 107 AC +/-



 Boundary

L-2400087

Clayton County, Iowa, 107 AC +/-



 Boundary

L-2400087

Clayton County, Iowa, 107 AC +/-



mapbox

Boundary

|  All Polygons 72.5 ac

SOIL CODE	SOIL DESCRIPTION	ACRES	%	CSR2	CPI	NCCPI	CAP
163D2	Fayette silt loam, 9 to 14 percent slopes, moderately eroded	20.47	28.24	46.0	0	81	3e
163C	Fayette silt loam, 5 to 9 percent slopes	18.94	26.13	75.0	0	89	3e
703E2	Dubuque silt loam, 14 to 18 percent slopes, moderately eroded	9.36	12.91	8.0	0	44	4e
163D	Fayette silt loam, 9 to 14 percent slopes	6.0	8.28	49.0	0	85	3e
162C2	Downs silt loam, 5 to 9 percent slopes, moderately eroded	5.98	8.25	80.0	0	85	3e
129B	Arenzville-Chaseburg complex, 1 to 5 percent slopes	5.78	7.97	73.0	92	85	2w
162D2	Downs silt loam, 9 to 14 percent slopes, moderately eroded	4.68	6.46	54.0	0	81	3e
163C2	Fayette silt loam, 5 to 9 percent slopes, moderately eroded	0.63	0.87	72.0	0	84	3e
163E3	Fayette silty clay loam, 14 to 18 percent slopes, severely eroded	0.52	0.72	29.0	0	72	6e
163E	Fayette silt loam, 14 to 18 percent slopes	0.14	0.19	38.0	0	81	4e
TOTALS		72.5(*)	100%	54.5	7.34	79.28	3.07

(\*) Total acres may differ in the second decimal compared to the sum of each acreage soil. This is due to a round error because we only show the acres of each soil with two decimal.

|  Boundary 43.04 ac

SOIL CODE	SOIL DESCRIPTION	ACRES	%	CSR2	CPI	NCCPI	CAP
163D2	Fayette silt loam, 9 to 14 percent slopes, moderately eroded	14.53	33.78	46.0	0	81	3e
703E2	Dubuque silt loam, 14 to 18 percent slopes, moderately eroded	6.7	15.58	8.0	0	44	4e
162C2	Downs silt loam, 5 to 9 percent slopes, moderately eroded	5.98	13.9	80.0	0	85	3e
129B	Arenzville-Chaseburg complex, 1 to 5 percent slopes	5.78	13.44	73.0	92	85	2w
162D2	Downs silt loam, 9 to 14 percent slopes, moderately eroded	4.68	10.88	54.0	0	81	3e
163C	Fayette silt loam, 5 to 9 percent slopes	4.07	9.46	75.0	0	89	3e
163C2	Fayette silt loam, 5 to 9 percent slopes, moderately eroded	0.63	1.46	72.0	0	84	3e
163E3	Fayette silty clay loam, 14 to 18 percent slopes, severely eroded	0.52	1.21	29.0	0	72	6e
163D	Fayette silt loam, 9 to 14 percent slopes	0.15	0.35	49.0	0	85	3e
TOTALS		43.04(*)	100%	52.27	12.36	77.09	3.06

(\*) Total acres may differ in the second decimal compared to the sum of each acreage soil. This is due to a round error because we only show the acres of each soil with two decimal.

|  Boundary 29.46 ac

SOIL CODE	SOIL DESCRIPTION	ACRES	%	CSR2	CPI	NCCPI	CAP
163C	Fayette silt loam, 5 to 9 percent slopes	14.87	50.46	75.0	0	89	3e
163D2	Fayette silt loam, 9 to 14 percent slopes, moderately eroded	5.94	20.16	46.0	0	81	3e

163D	Fayette silt loam, 9 to 14 percent slopes	5.85	19.85	49.0	0	85	3e
703E2	Dubuque silt loam, 14 to 18 percent slopes, moderately eroded	2.66	9.03	8.0	0	44	4e
163E	Fayette silt loam, 14 to 18 percent slopes	0.14	0.48	38.0	0	81	4e
TOTALS		29.46(*)	100%	57.74	-	82.46	3.1

(\*) Total acres may differ in the second decimal compared to the sum of each acreage soil. This is due to a round error because we only show the acres of each soil with two decimal.





 Boundary



 Boundary

|  Boundary 27.94 ac

SOIL CODE	SOIL DESCRIPTION	ACRES	%	CSR2	CPI	NCCPI	CAP
163D2	Fayette silt loam, 9 to 14 percent slopes, moderately eroded	12.63	45.22	46.0	0	81	3e
703E2	Dubuque silt loam, 14 to 18 percent slopes, moderately eroded	9.97	35.7	8.0	0	44	4e
163C	Fayette silt loam, 5 to 9 percent slopes	3.87	13.86	75.0	0	89	3e
163E2	Fayette silt loam, 14 to 18 percent slopes, moderately eroded	0.91	3.26	35.0	0	77	4e
162D2	Downs silt loam, 9 to 14 percent slopes, moderately eroded	0.54	1.93	54.0	0	81	3e
499F	Nordness silt loam, 14 to 25 percent slopes	0.02	0.07	5.0	0	42	7s
TOTALS		27.94(*)	100%	36.24	-	68.77	3.39

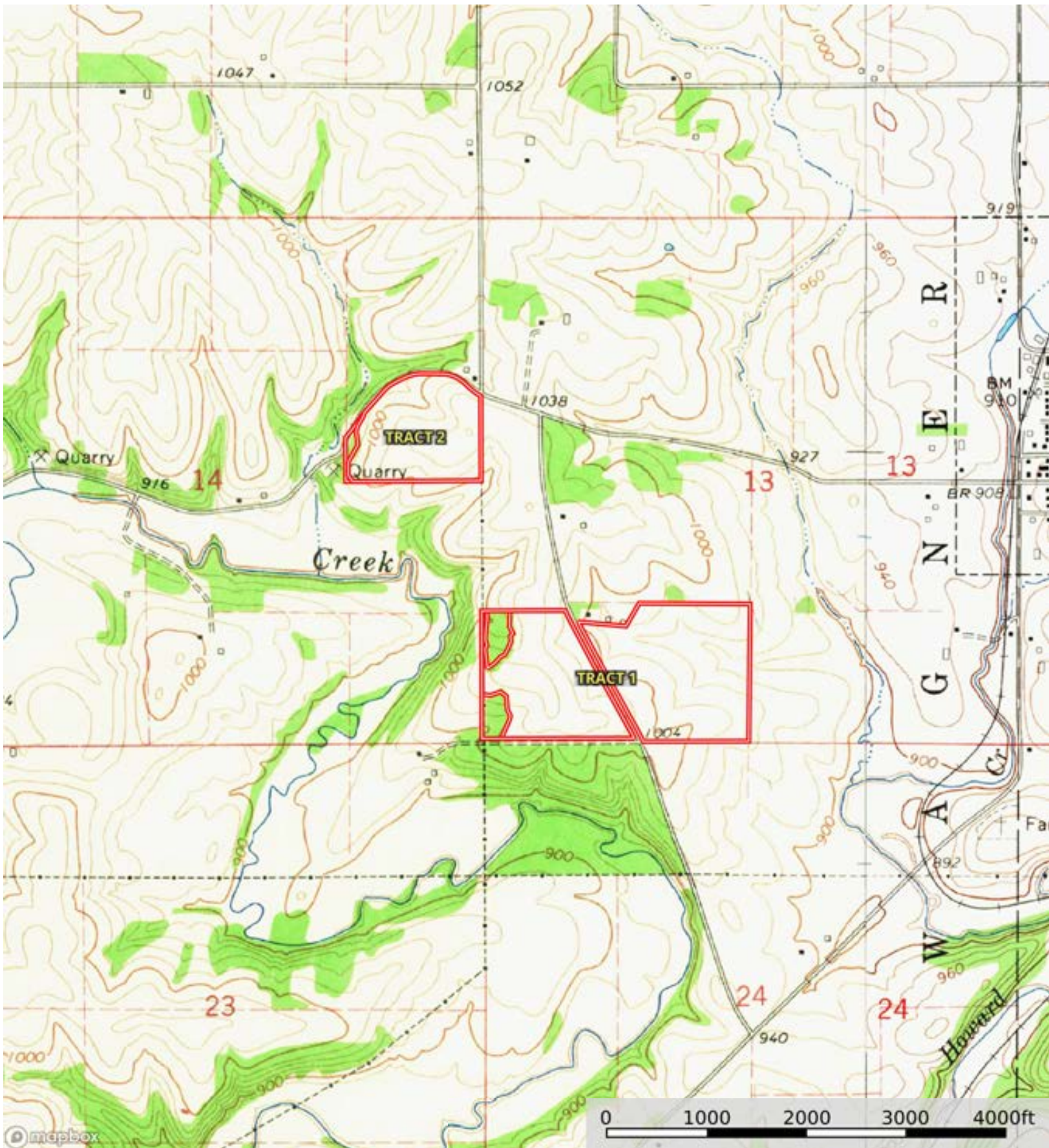
(\*) Total acres may differ in the second decimal compared to the sum of each acreage soil. This is due to a round error because we only show the acres of each soil with two decimal.






L-2400087

Clayton County, Iowa, 107 AC +/-



 Boundary