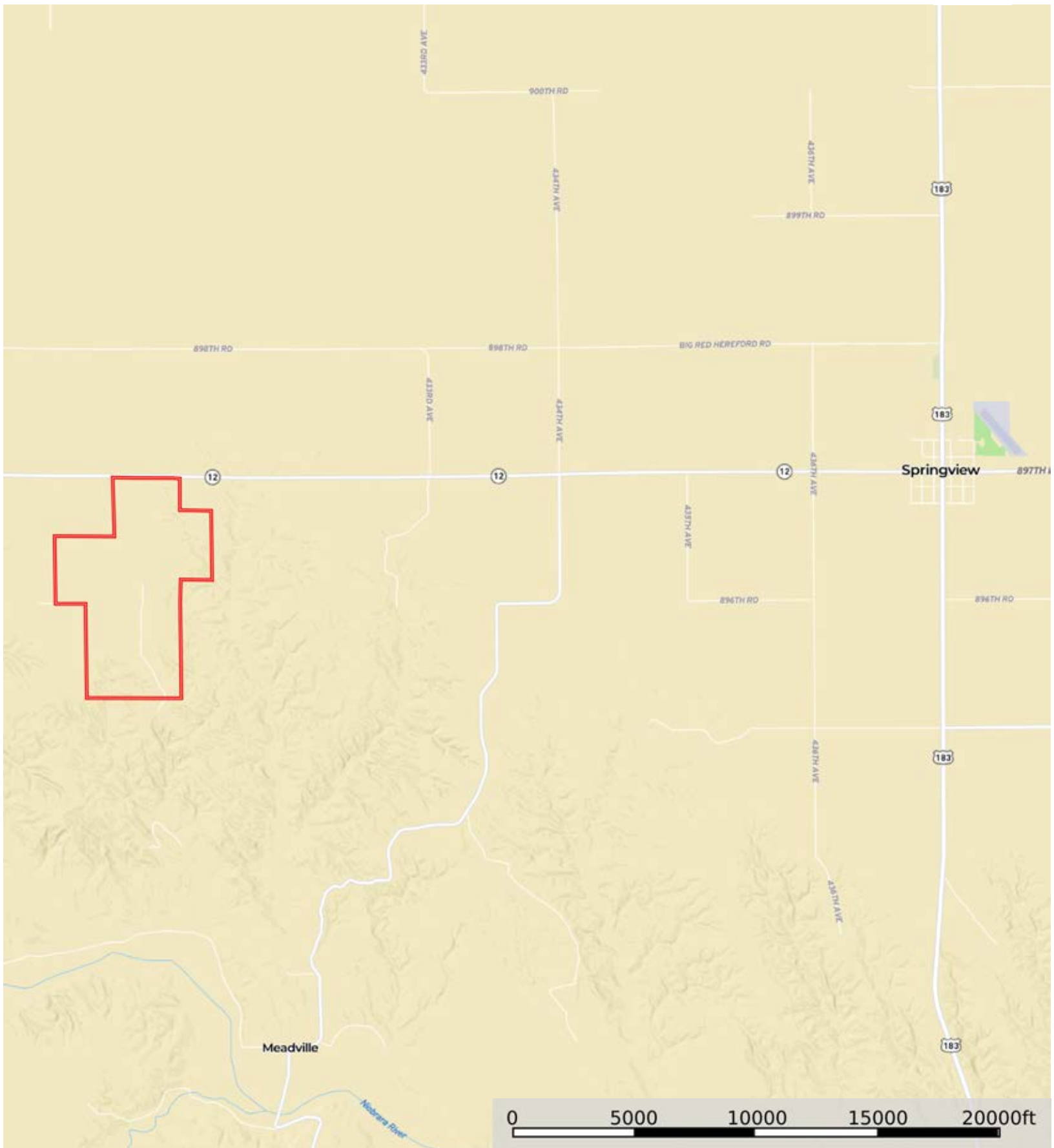



L-2400090

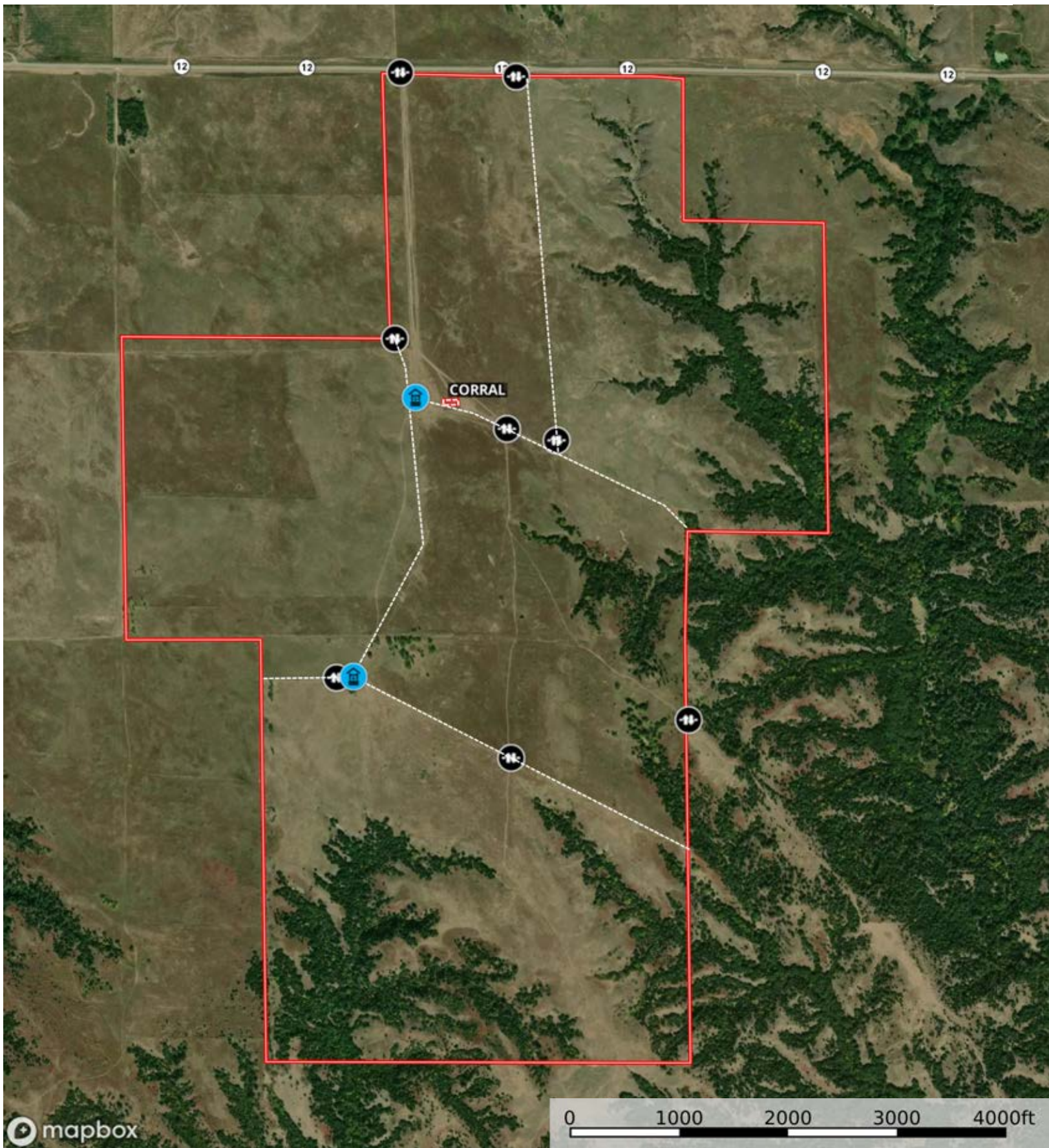
Keya Paha County, Nebraska, 917.72 AC +/-



 Boundary

L-2400090

Keya Paha County, Nebraska, 917.72 AC +/-



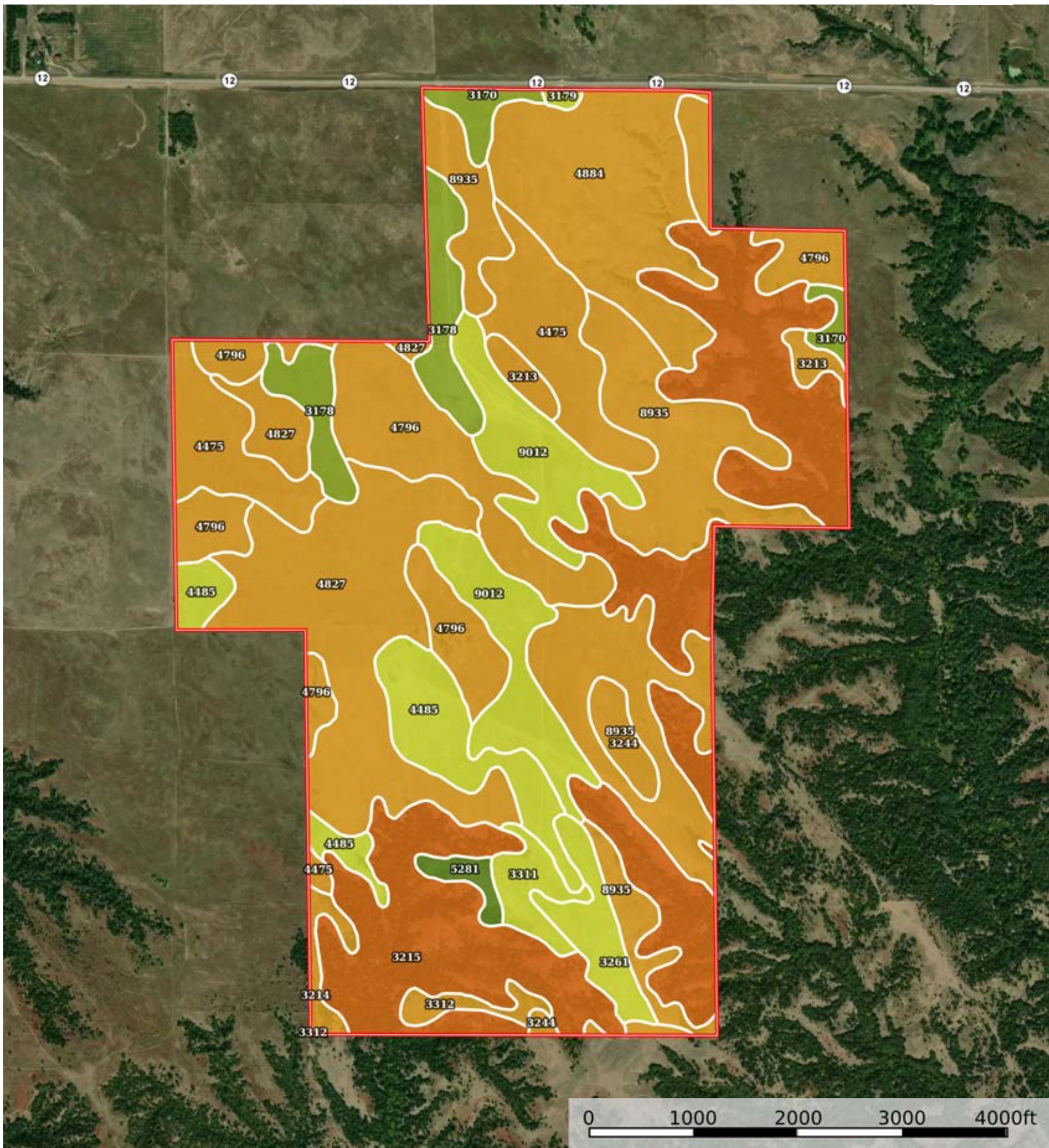
mapbox

0 1000 2000 3000 4000ft

Gate Well Fence Boundary Boundary

L-2400090

Keya Paha County, Nebraska, 917.72 AC +/-



Boundary

|  Boundary 915.25 ac

SOIL CODE	SOIL DESCRIPTION	ACRES	%	CPI	NCCPI	CAP
3215	Longpine-Ronson-Duda complex, 15 to 70 percent slopes	209.3 2	22.87	0	9	7s
8935	Simeon-Holt variant-Ronson complex, 6 to 17 percent slopes	128.9 3	14.09	0	21	6s
4827	Valentine loamy fine sand, gently rolling	111.2 1	12.15	0	19	6e
4796	Valentine fine sand, 9 to 25 percent slopes	99.48	10.87	14	15	6e
4884	Valentine-Longpine complex, rolling	78.04	8.53	0	17	6e
9012	Anselmo loamy fine sand, 0 to 3 percent slopes	66.3	7.24	57	31	4e
4475	Duda loamy fine sand, 3 to 6 percent slopes	64.33	7.03	0	22	6e
4485	Dunday loamy fine sand, 0 to 3 percent slopes	43.1	4.71	0	24	4e
3178	Holt variant loamy fine sand, 0 to 3 percent slopes	32.24	3.52	0	37	3e
3261	Oneill fine sandy loam, 2 to 6 percent slopes	17.42	1.9	0	29	4e
3311	Ronson-Anselmo fine sandy loams, 6 to 11 percent slopes	12.31	1.34	0	36	4e
3244	Meadin gravelly sandy loam, 2 to 30 percent slopes	12.09	1.32	0	21	6s
3170	Holt fine sandy loam, 0 to 3 percent slopes	11.27	1.23	59	22	3e
3213	Longpine loamy fine sand, 3 to 30 percent slopes	9.74	1.06	0	13	6s
3312	Ronson-Anselmo fine sandy loams, 6 to 30 percent slopes	6.36	0.69	0	31	6e
3214	Longpine-Duda complex, 3 to 15 percent slopes	6.33	0.69	0	14	6s
5281	Vetal fine sandy loam, 0 to 3 percent slopes	5.44	0.59	66	42	2c
3179	Holt variant loamy fine sand, 3 to 6 percent slopes	1.34	0.15	0	36	4e
TOTALS		915.2 5(*)	100%	6.77	18.97	5.76









(*) Total acres may differ in the second decimal compared to the sum of each acreage soil. This is due to a round error because we only show the acres of each soil with two decimal.

Capability Legend

Increased Limitations and Hazards

Decreased Adaptability and Freedom of Choice Users

Land, Capability

								
	1	2	3	4	5	6	7	8
'Wild Life'	•	•	•	•	•	•	•	•
Forestry	•	•	•	•	•	•	•	
Limited	•	•	•	•	•	•	•	
Moderate	•	•	•	•	•	•		
Intense	•	•	•	•	•			
Limited	•	•	•	•				
Moderate	•	•	•					
Intense	•	•						
Very Intense	•							

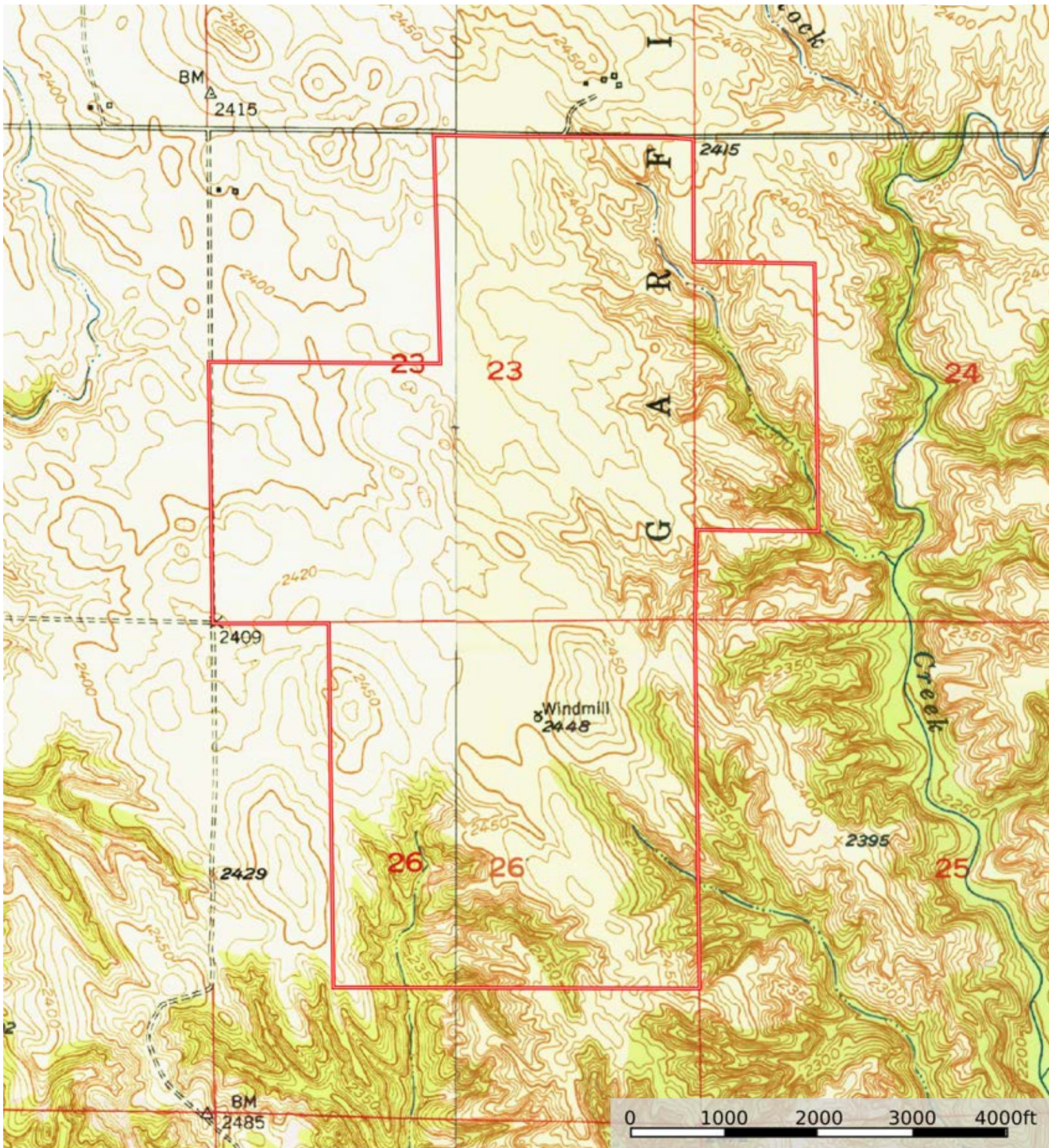
Grazing Cultivation


(c) climatic limitations (e) susceptibility to erosion

(s) soil limitations within the rooting zone (w) excess of water

L-2400090

Keya Paha County, Nebraska, 917.72 AC +/-



 Boundary