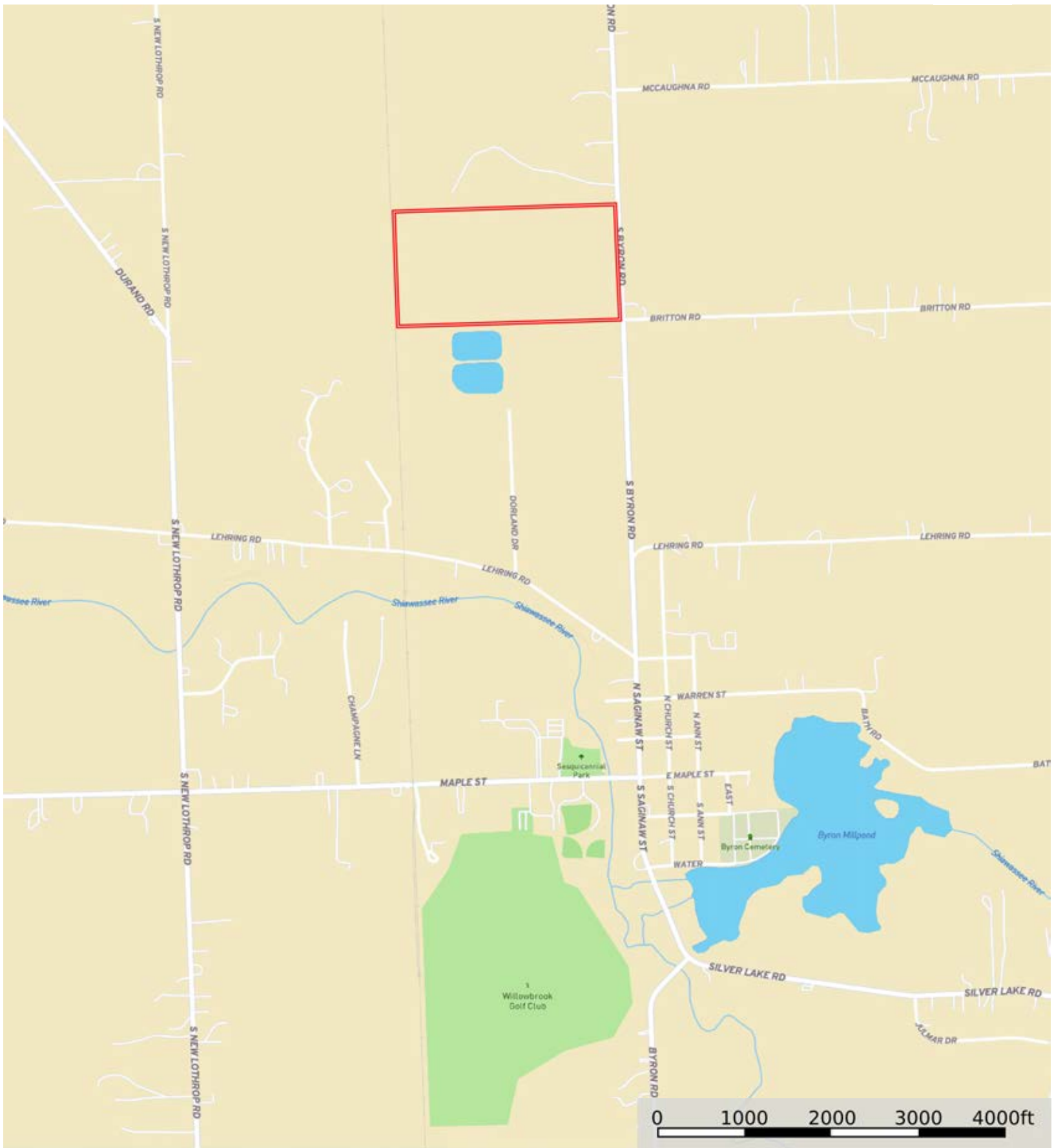



L-2400093

Shiawassee County, Michigan, 80 AC +/-



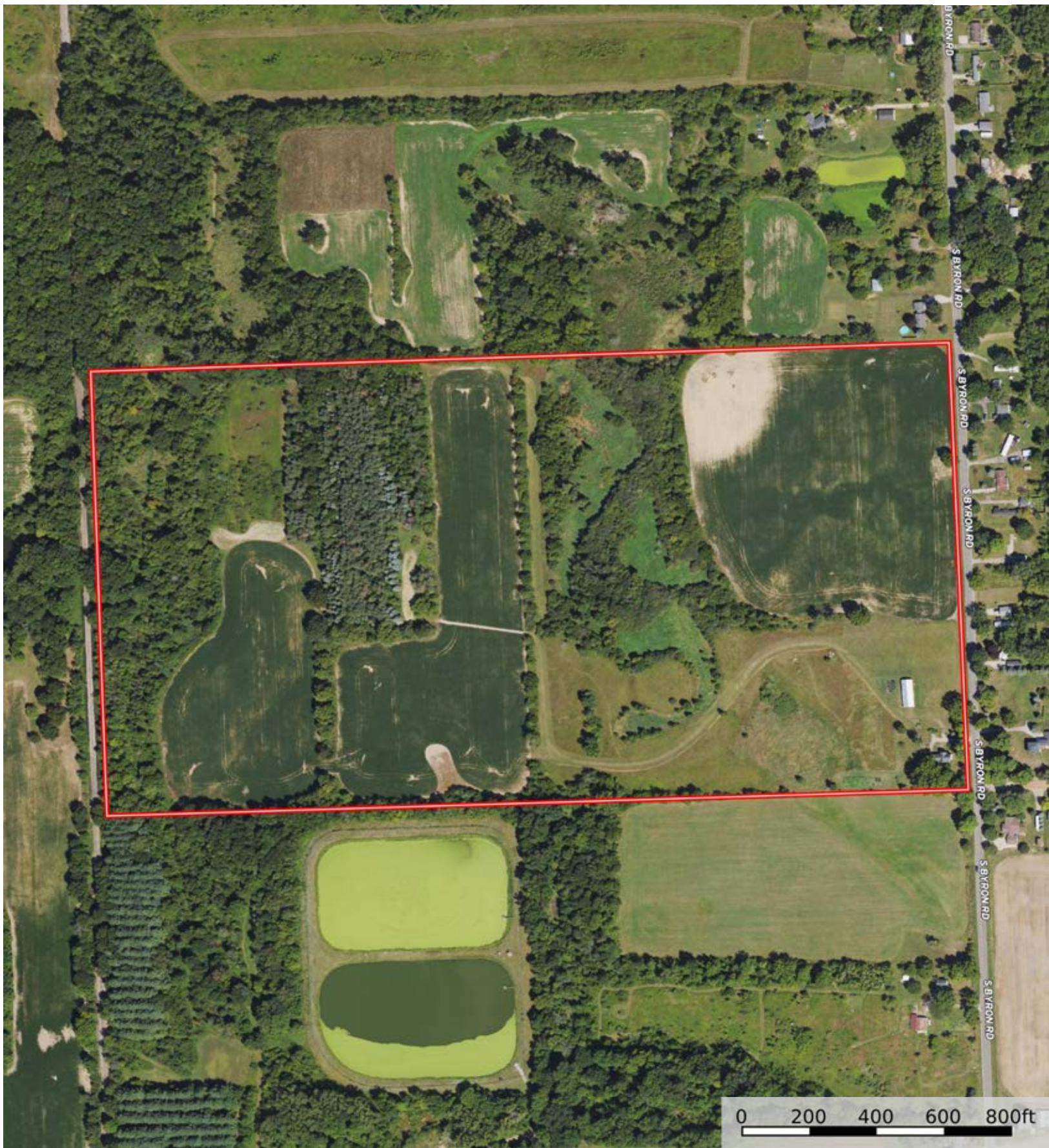
 Boundary




The information contained herein was obtained from sources deemed to be reliable. Land id™ Services makes no warranties or guarantees as to the completeness or accuracy thereof.

L-2400093

Shiawassee County, Michigan, 80 AC +/-



 Boundary

L-2400093

Shiawassee County, Michigan, 80 AC +/-



Boundary



The information contained herein was obtained from sources deemed to be reliable. Land id™ Services makes no warranties or guarantees as to the completeness or accuracy thereof.

|  Boundary 78.18 ac

SOIL CODE	SOIL DESCRIPTION	ACRES	%	CPI	NCCPI	CAP
MsB	Metamora sandy loam, 2 to 6 percent slopes	17.7	22.64	0	71	2e
OmC	Owosso-Miami sandy loams, 6 to 12 percent slopes	13.97	17.87	0	68	3e
CarabA	Carlisle muck, 0 to 2 percent slopes	13.94	17.83	0	11	5w
OmB	Owosso-Miami sandy loams, 2 to 6 percent slopes	8.74	11.18	0	69	2e
MsA	Metamora sandy loam, 0 to 2 percent slopes	7.69	9.84	0	72	2w
CvraaB	Conover loam, 0 to 4 percent slopes	4.98	6.37	0	47	2w
Bw	Brookston loam, 0 to 2 percent slopes	3.69	4.72	0	79	2w
BrB	Boyer sandy loam, 2 to 6 percent slopes	2.41	3.08	0	48	3s
Bt	Breckenridge sandy loam	1.69	2.16	0	59	2w
BmC	Boyer loamy sand, 6 to 12 percent slopes	1.55	1.98	0	45	3e
BrC	Boyer sandy loam, 6 to 12 percent slopes	1.19	1.52	0	47	3e
WeB	Wasepi sandy loam, 2 to 6 percent slopes	0.63	0.81	0	56	3e
TOTALS		78.18(*)	100%	-	56.51	2.79









(*) Total acres may differ in the second decimal compared to the sum of each acreage soil. This is due to a round error because we only show the acres of each soil with two decimal.

Capability Legend

Increased Limitations and Hazards

Decreased Adaptability and Freedom of Choice Users

Land, Capability

								
	1	2	3	4	5	6	7	8
'Wild Life'	•	•	•	•	•	•	•	•
Forestry	•	•	•	•	•	•	•	
Limited	•	•	•	•	•	•	•	
Moderate	•	•	•	•	•	•		
Intense	•	•	•	•	•			
Limited	•	•	•	•				
Moderate	•	•	•					
Intense	•	•						
Very Intense	•							

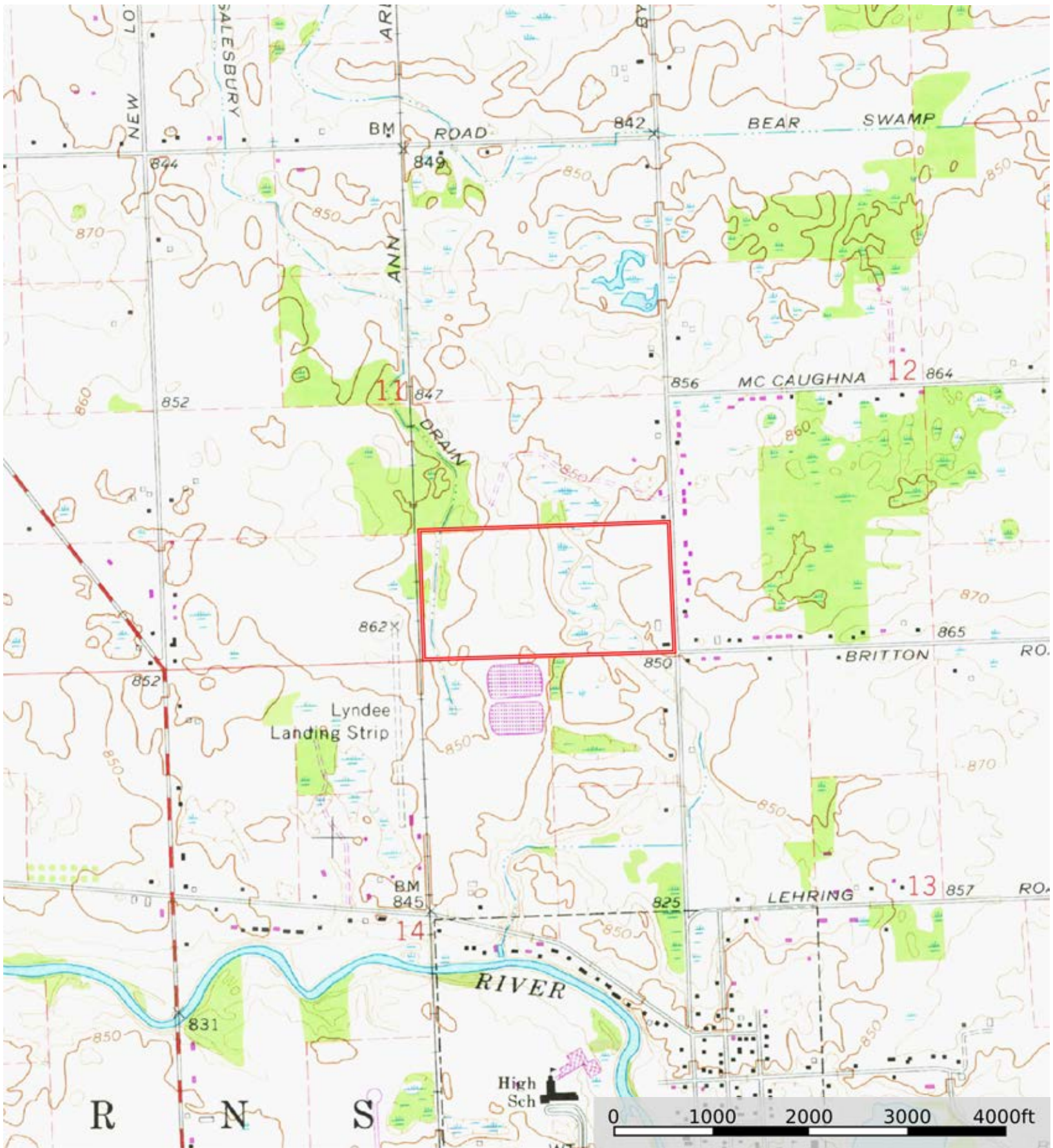
Grazing Cultivation


(c) climatic limitations (e) susceptibility to erosion

(s) soil limitations within the rooting zone (w) excess of water

L-2400093

Shiawassee County, Michigan, 80 AC +/-



 Boundary



The information contained herein was obtained from sources deemed to be reliable. Land id™ Services makes no warranties or guarantees as to the completeness or accuracy thereof.