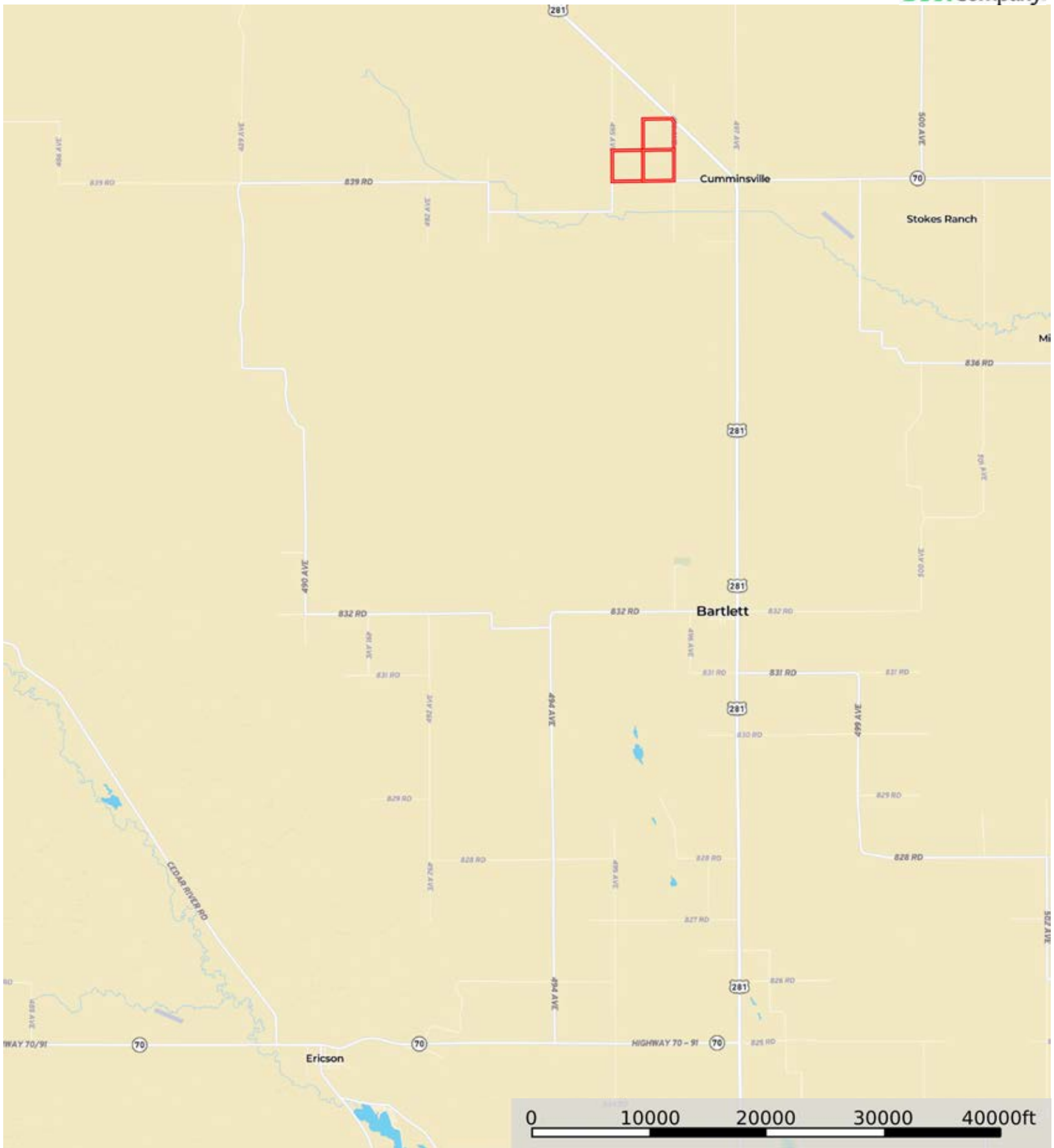



L-2400123

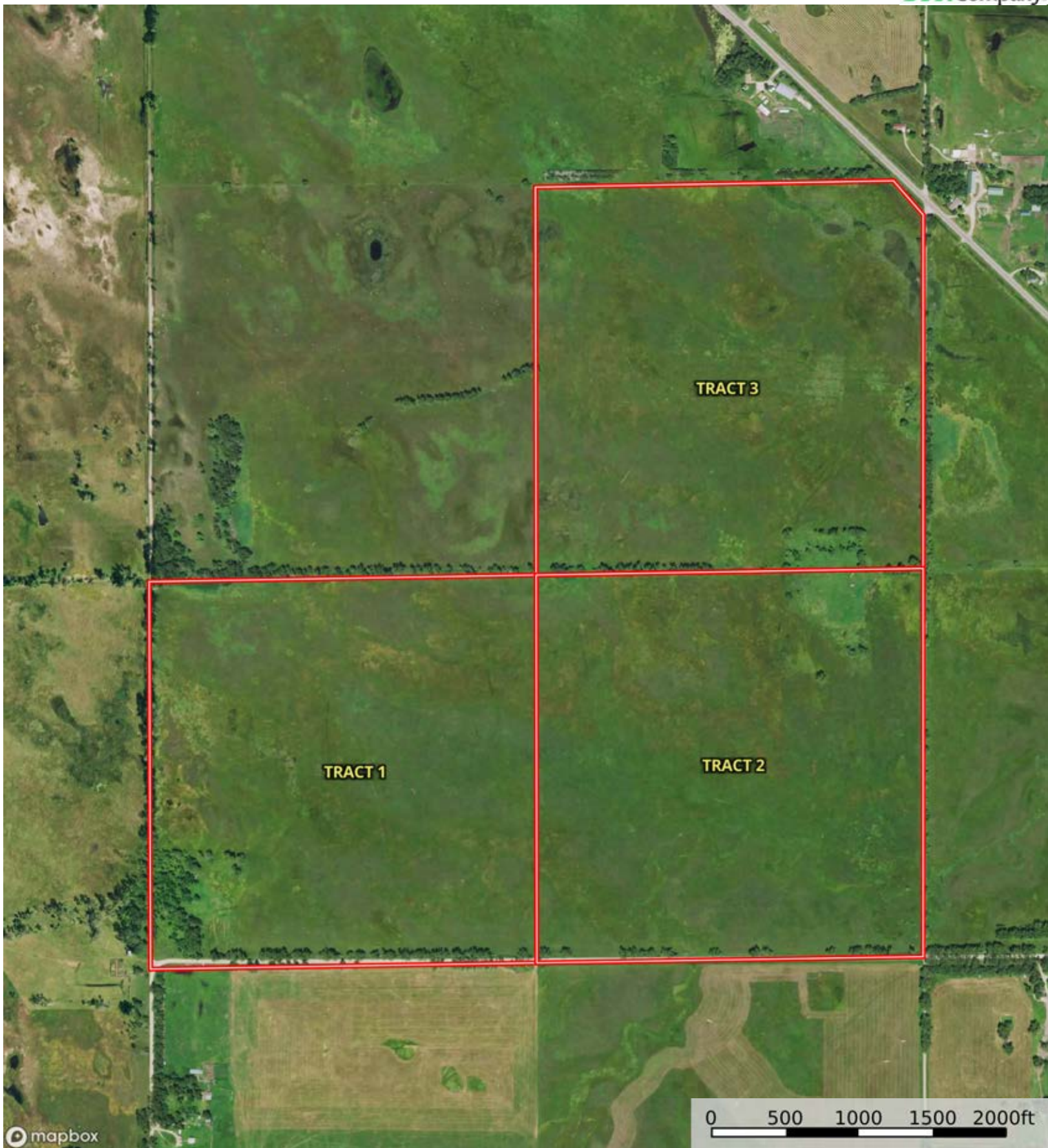
Wheeler County, Nebraska, 479.85 AC +/-




 Boundary


L-2400123

Wheeler County, Nebraska, 479.85 AC +/-



 Boundary



 Boundary

|  All Polygons 480.58 ac

| SOIL CODE | SOIL DESCRIPTION | ACRES | % | CPI | NCCPI | CAP |
|-----------|---|-----------|-------|-------|-------|-----|
| 4376 | Loup fine sandy loam, rarely flooded | 177.08 | 36.84 | 0 | 30 | 5w |
| 4553 | Elsmere loamy fine sand, 0 to 3 percent slopes | 107.39 | 22.34 | 64 | 25 | 4w |
| 4561 | Elsmere-Loup complex, 0 to 3 percent slopes | 72.89 | 15.17 | 48 | 22 | 4w |
| 4669 | Loup fine sandy loam, frequently ponded | 61.83 | 12.86 | 0 | 7 | 5w |
| 4560 | Elsmere-lpage loamy fine sands, 0 to 3 percent slopes | 61.39 | 12.77 | 0 | 24 | 4w |
| TOTALS | | 480.58(*) | 100% | 21.58 | 23.94 | 4.5 |

(*) Total acres may differ in the second decimal compared to the sum of each acreage soil. This is due to a round error because we only show the acres of each soil with two decimal.

|  Boundary 160.06 ac

| SOIL CODE | SOIL DESCRIPTION | ACRES | % | CPI | NCCPI | CAP |
|-----------|---|-----------|-------|-------|-------|------|
| 4561 | Elsmere-Loup complex, 0 to 3 percent slopes | 49.03 | 30.63 | 48 | 22 | 4w |
| 4376 | Loup fine sandy loam, rarely flooded | 43.06 | 26.9 | 0 | 30 | 5w |
| 4560 | Elsmere-lpage loamy fine sands, 0 to 3 percent slopes | 37.52 | 23.44 | 0 | 24 | 4w |
| 4553 | Elsmere loamy fine sand, 0 to 3 percent slopes | 28.57 | 17.85 | 64 | 25 | 4w |
| 4669 | Loup fine sandy loam, frequently ponded | 1.88 | 1.17 | 0 | 7 | 5w |
| TOTALS | | 160.06(*) | 100% | 26.13 | 24.98 | 4.28 |

(*) Total acres may differ in the second decimal compared to the sum of each acreage soil. This is due to a round error because we only show the acres of each soil with two decimal.

|  Boundary 160.33 ac

| SOIL CODE | SOIL DESCRIPTION | ACRES | % | CPI | NCCPI | CAP |
|-----------|---|-----------|-------|-------|-------|------|
| 4376 | Loup fine sandy loam, rarely flooded | 66.33 | 41.37 | 0 | 30 | 5w |
| 4553 | Elsmere loamy fine sand, 0 to 3 percent slopes | 51.11 | 31.88 | 64 | 25 | 4w |
| 4669 | Loup fine sandy loam, frequently ponded | 34.56 | 21.55 | 0 | 7 | 5w |
| 4560 | Elsmere-lpage loamy fine sands, 0 to 3 percent slopes | 7.55 | 4.71 | 0 | 24 | 4w |
| 4561 | Elsmere-Loup complex, 0 to 3 percent slopes | 0.78 | 0.49 | 48 | 22 | 4w |
| TOTALS | | 160.33(*) | 100% | 20.63 | 23.13 | 4.63 |

(*) Total acres may differ in the second decimal compared to the sum of each acreage soil. This is due to a round error because we only show the acres of each soil with two decimal.

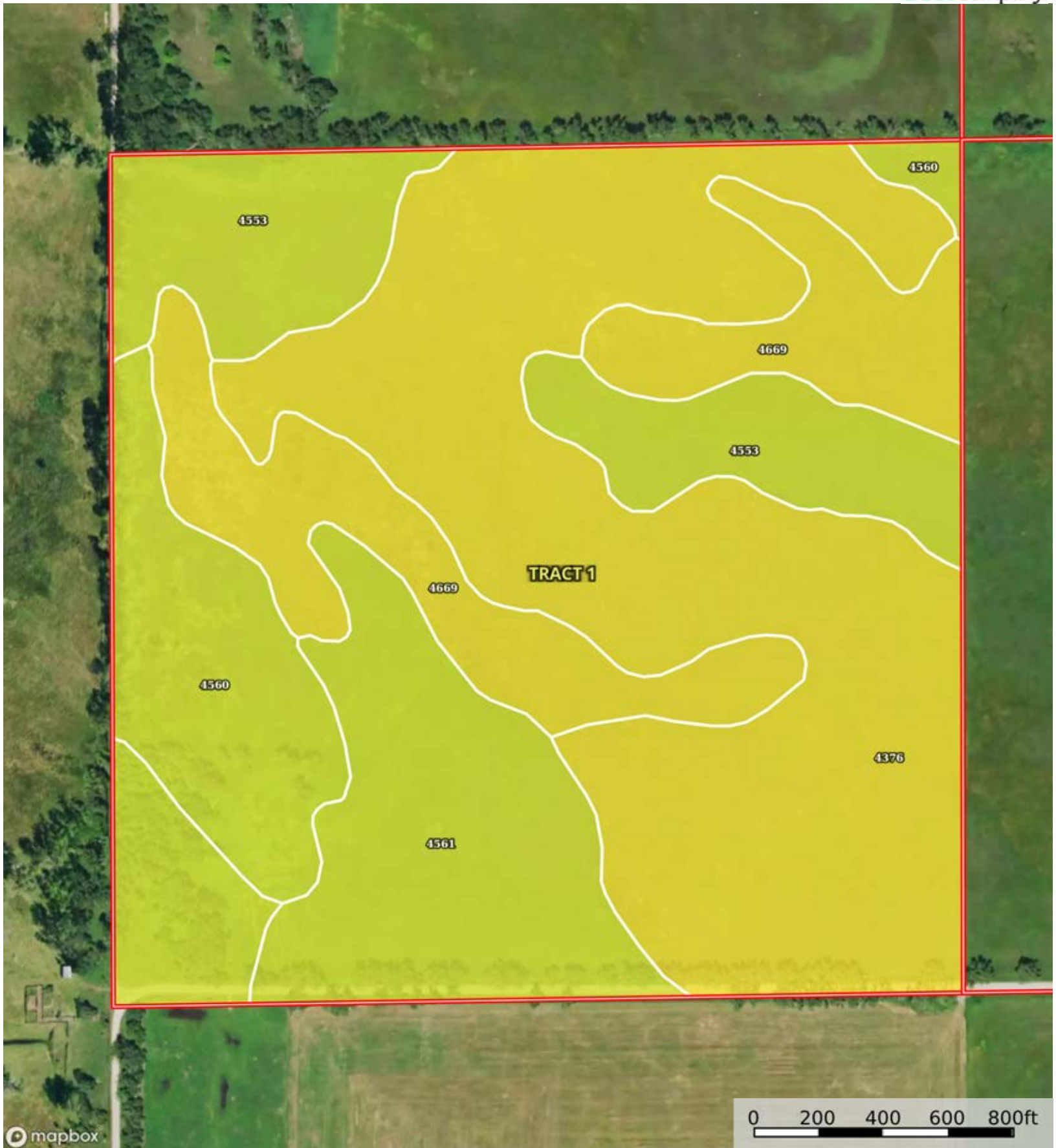
|  Boundary 160.19 ac


| SOIL CODE | SOIL DESCRIPTION | ACRES | % | CPI | NCCPI | CAP |
|-----------|--------------------------------------|-------|-------|-----|-------|-----|
| 4376 | Loup fine sandy loam, rarely flooded | 67.69 | 42.25 | 0 | 30 | 5w |

| | | | | | | |
|--------|---|-----------|-------|-------|-------|------|
| 4553 | Elsmere loamy fine sand, 0 to 3 percent slopes | 27.71 | 17.3 | 64 | 25 | 4w |
| 4669 | Loup fine sandy loam, frequently ponded | 25.39 | 15.85 | 0 | 7 | 5w |
| 4561 | Elsmere-Loup complex, 0 to 3 percent slopes | 23.08 | 14.41 | 48 | 22 | 4w |
| 4560 | Elsmere-lpage loamy fine sands, 0 to 3 percent slopes | 16.32 | 10.19 | 0 | 24 | 4w |
| TOTALS | | 160.19(*) | 100% | 17.99 | 23.72 | 4.58 |

(*) Total acres may differ in the second decimal compared to the sum of each acreage soil. This is due to a round error because we only show the acres of each soil with two decimal.





 Boundary

|  Boundary 160.19 ac

| SOIL CODE | SOIL DESCRIPTION | ACRES | % | CPI | NCCPI | CAP |
|-----------|---|-----------|-------|-------|-------|------|
| 4376 | Loup fine sandy loam, rarely flooded | 67.69 | 42.25 | 0 | 30 | 5w |
| 4553 | Elsmere loamy fine sand, 0 to 3 percent slopes | 27.71 | 17.3 | 64 | 25 | 4w |
| 4669 | Loup fine sandy loam, frequently ponded | 25.39 | 15.85 | 0 | 7 | 5w |
| 4561 | Elsmere-Loup complex, 0 to 3 percent slopes | 23.08 | 14.41 | 48 | 22 | 4w |
| 4560 | Elsmere-lpage loamy fine sands, 0 to 3 percent slopes | 16.32 | 10.19 | 0 | 24 | 4w |
| TOTALS | | 160.19(*) | 100% | 17.99 | 23.72 | 4.58 |

(*) Total acres may differ in the second decimal compared to the sum of each acreage soil. This is due to a round error because we only show the acres of each soil with two decimal.



L-2400123

Wheeler County, Nebraska, 479.85 AC +/-



mapbox

Boundary



The information contained herein was obtained from sources deemed to be reliable. Land id™ Services makes no warranties or guarantees as to the completeness or accuracy thereof.

|  Boundary 160.33 ac

| SOIL CODE | SOIL DESCRIPTION | ACRES | % | CPI | NCCPI | CAP |
|-----------|---|---------------|-------|-------|-------|------|
| 4376 | Loup fine sandy loam, rarely flooded | 66.33 | 41.37 | 0 | 30 | 5w |
| 4553 | Elsmere loamy fine sand, 0 to 3 percent slopes | 51.11 | 31.88 | 64 | 25 | 4w |
| 4669 | Loup fine sandy loam, frequently ponded | 34.56 | 21.55 | 0 | 7 | 5w |
| 4560 | Elsmere-lpage loamy fine sands, 0 to 3 percent slopes | 7.55 | 4.71 | 0 | 24 | 4w |
| 4561 | Elsmere-Loup complex, 0 to 3 percent slopes | 0.78 | 0.49 | 48 | 22 | 4w |
| TOTALS | | 160.3 3(*) | 100% | 20.63 | 23.13 | 4.63 |


(*) Total acres may differ in the second decimal compared to the sum of each acreage soil. This is due to a round error because we only show the acres of each soil with two decimal.



L-2400123

Wheeler County, Nebraska, 479.85 AC +/-



 Boundary



The information contained herein was obtained from sources deemed to be reliable. Land id™ Services makes no warranties or guarantees as to the completeness or accuracy thereof.

|  Boundary 160.06 ac

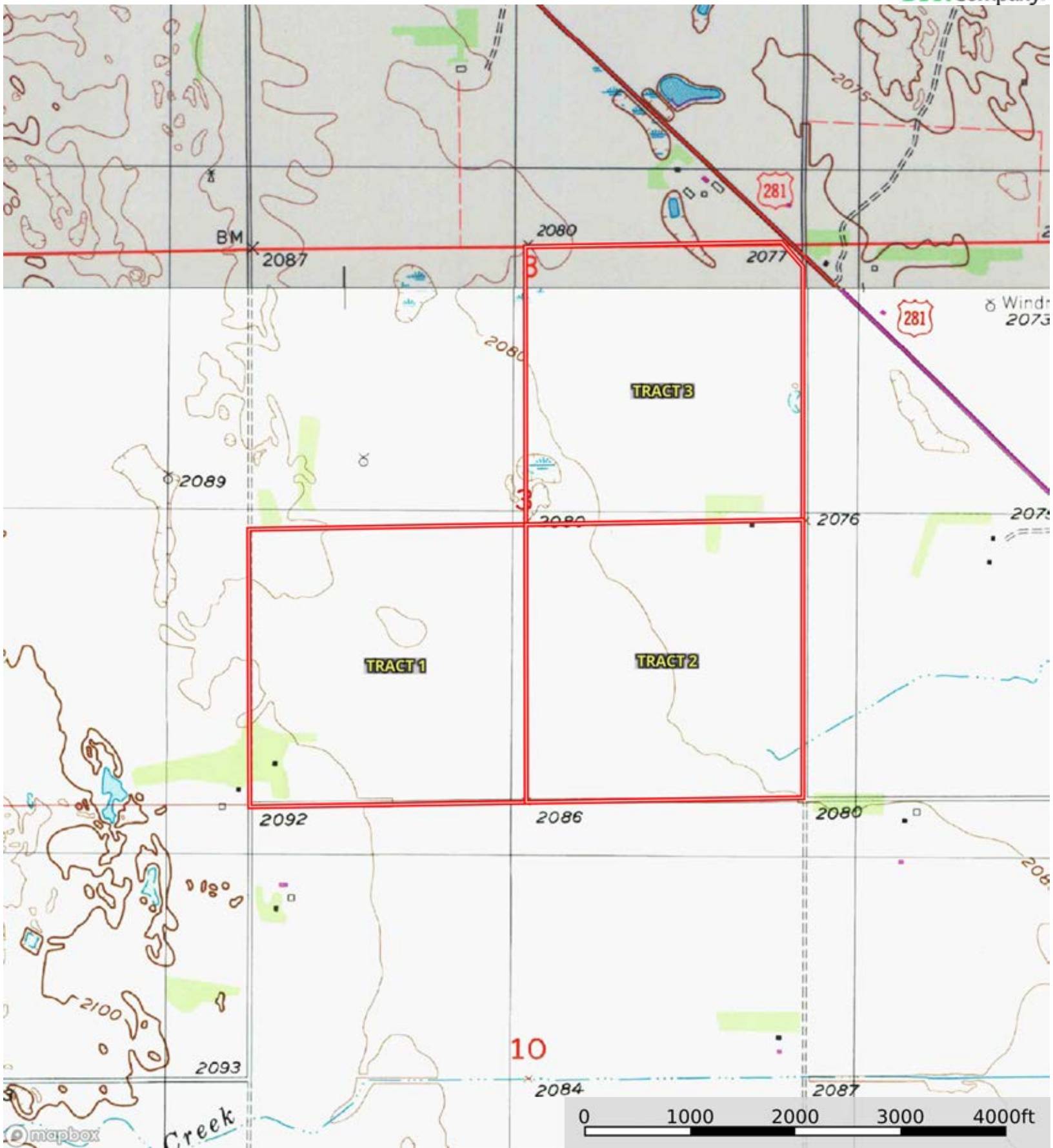
| SOIL CODE | SOIL DESCRIPTION | ACRES | % | CPI | NCCPI | CAP |
|-----------|---|-----------|-------|-------|-------|------|
| 4561 | Elsmere-Loup complex, 0 to 3 percent slopes | 49.03 | 30.63 | 48 | 22 | 4w |
| 4376 | Loup fine sandy loam, rarely flooded | 43.06 | 26.9 | 0 | 30 | 5w |
| 4560 | Elsmere-lpage loamy fine sands, 0 to 3 percent slopes | 37.52 | 23.44 | 0 | 24 | 4w |
| 4553 | Elsmere loamy fine sand, 0 to 3 percent slopes | 28.57 | 17.85 | 64 | 25 | 4w |
| 4669 | Loup fine sandy loam, frequently ponded | 1.88 | 1.17 | 0 | 7 | 5w |
| TOTALS | | 160.06(*) | 100% | 26.13 | 24.98 | 4.28 |

(*) Total acres may differ in the second decimal compared to the sum of each acreage soil. This is due to a round error because we only show the acres of each soil with two decimal.



L-2400123

Wheeler County, Nebraska, 479.85 AC +/-



Boundary



The information contained herein was obtained from sources deemed to be reliable. Land id™ Services makes no warranties or guarantees as to the completeness or accuracy thereof.