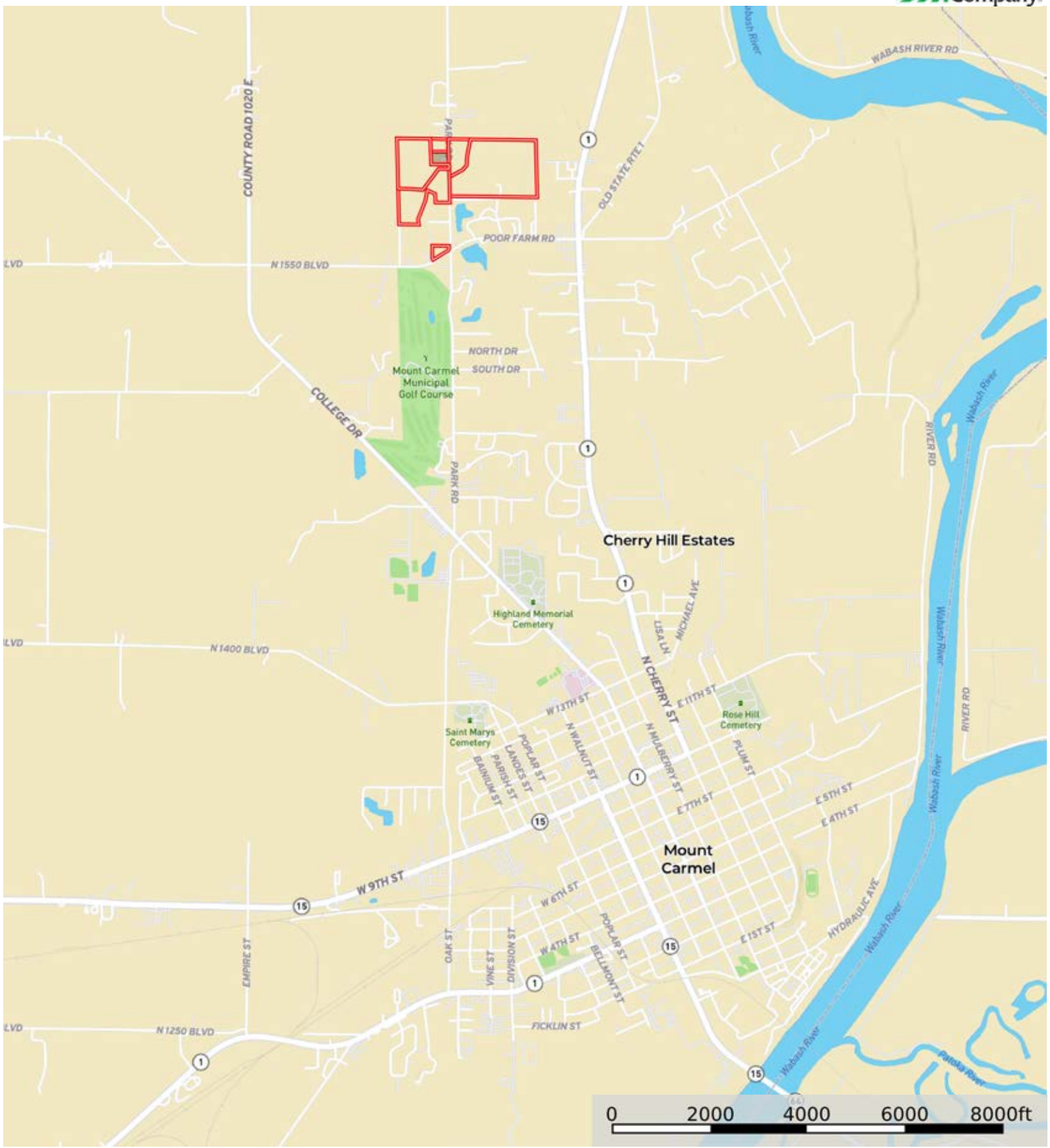


L-2400127

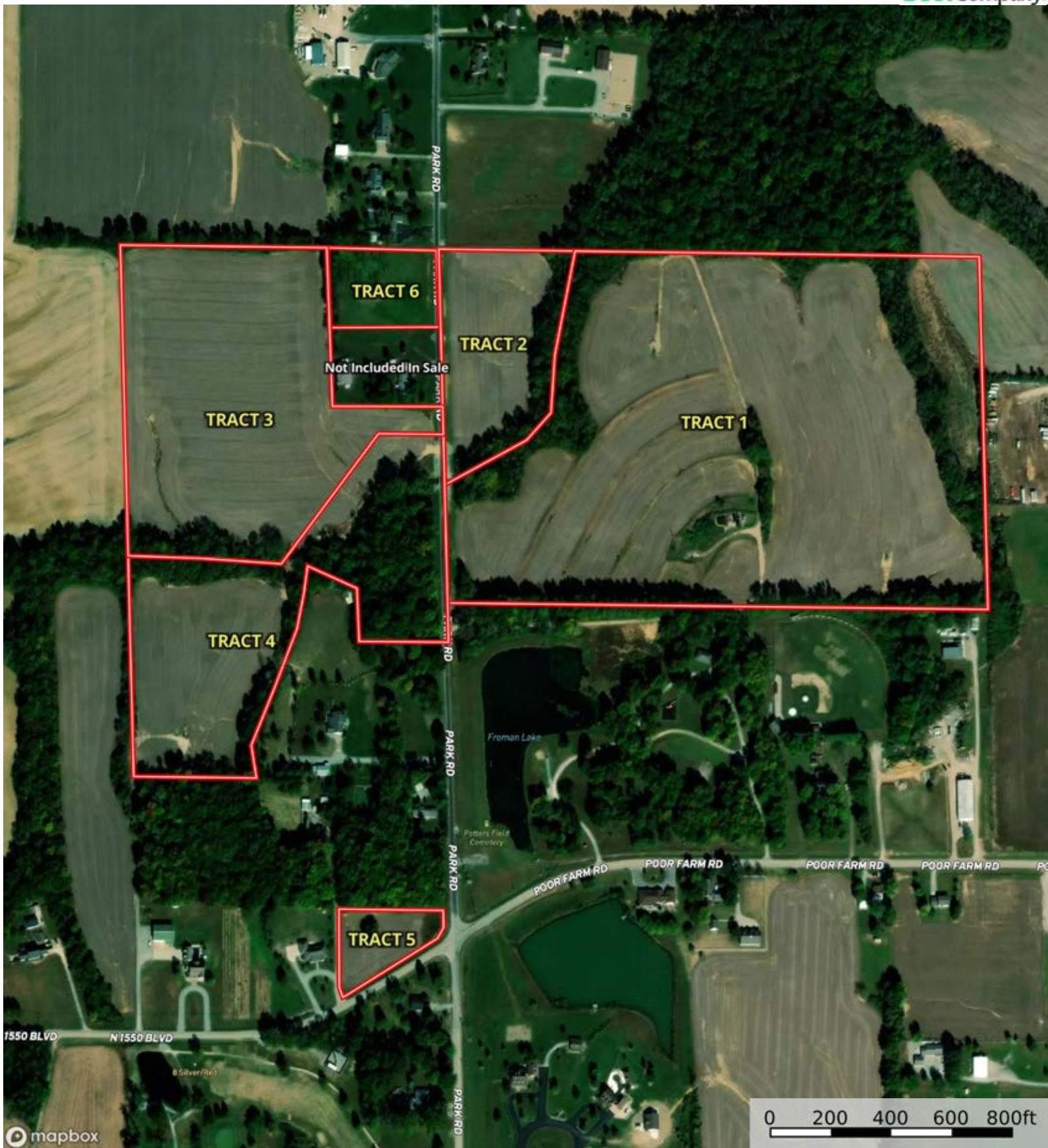
Wabash County, Illinois, 81.502 AC +/-



■ Not Included In Sale
 ▭ Boundary
 ▭ Boundary


Cris Miller
 11516 Nicholas St

The information contained herein was obtained from sources deemed to be reliable. Land id™ Services makes no warranties or guarantees as to the completeness or accuracy thereof.



■ Not Included In Sale
 ▭ Boundary
 ▭ Boundary



 Boundary

|  Boundary 42.43 ac

SOIL CODE	SOIL DESCRIPTION	ACRES	%	PI	NCCPI	CAP
214C3	Hosmer silt loam, 5 to 10 percent slopes, severely eroded	15.73	37.06	78	54	4e
308C3	Alford silt loam, 5 to 10 percent slopes, severely eroded	6.23	14.68	104	69	4e
214B2	Hosmer silt loam, 2 to 5 percent slopes, eroded	5.53	13.03	97	55	2e
164A	Stoy silt loam, 0 to 2 percent slopes	5.24	12.35	109	76	2w
164B	Stoy silt loam, 2 to 5 percent slopes	2.94	6.93	107	77	2w
3331A	Haymond silt loam, 0 to 2 percent slopes, frequently flooded	2.43	5.73	119	82	3w
999D3	Hickory-Alford complex, 7 to 12 percent slopes, severely eroded	2.16	5.09	89	67	4e
307A	Iona silt loam, 0 to 2 percent slopes	1.06	2.5	118	95	1
214B	Hosmer silt loam, 2 to 5 percent slopes	0.59	1.39	103	70	2e
8D	Hickory silt loam, 10 to 18 percent slopes	0.52	1.23	86	79	3e
TOTALS		42.43(*)	100%	94.46	64.45	3.18









(*) Total acres may differ in the second decimal compared to the sum of each acreage soil. This is due to a round error because we only show the acres of each soil with two decimal.

Capability Legend

Increased Limitations and Hazards

Decreased Adaptability and Freedom of Choice Users

Land, Capability


								
	1	2	3	4	5	6	7	8
'Wild Life'	•	•	•	•	•	•	•	•
Forestry	•	•	•	•	•	•	•	
Limited	•	•	•	•	•	•	•	
Moderate	•	•	•	•	•	•		
Intense	•	•	•	•	•			
Limited	•	•	•	•				
Moderate	•	•	•					
Intense	•	•						
Very Intense	•							

Grazing Cultivation

(c) climatic limitations (e) susceptibility to erosion

(s) soil limitations within the rooting zone (w) excess of water



 Boundary

|  Boundary 6.11 ac

SOIL CODE	SOIL DESCRIPTION	ACRES	%	PI	NCCPI	CAP
134D3	Camden silty clay loam, 7 to 12 percent slopes, severely eroded	3.51	57.54	99	71	4e
3331A	Haymond silt loam, 0 to 2 percent slopes, frequently flooded	1.74	28.52	119	82	3w
164B	Stoy silt loam, 2 to 5 percent slopes	0.83	13.61	107	77	2w
214C3	Hosmer silt loam, 5 to 10 percent slopes, severely eroded	0.03	0.49	78	54	4e
TOTALS		6.11(*)	100%	105.85	74.99	3.44


(*) Total acres may differ in the second decimal compared to the sum of each acreage soil. This is due to a round error because we only show the acres of each soil with two decimal.



L-2400127

Wabash County, Illinois, 81.502 AC +/-



 Boundary



The information contained herein was obtained from sources deemed to be reliable. Land id™ Services makes no warranties or guarantees as to the completeness or accuracy thereof.

|  Boundary 17.19 ac

SOIL CODE	SOIL DESCRIPTION	ACRES	%	PI	NCCPI	CAP
164B	Stoy silt loam, 2 to 5 percent slopes	13.06	75.97	107	77	2w
214C3	Hosmer silt loam, 5 to 10 percent slopes, severely eroded	3.7	21.52	78	54	4e
3331A	Haymond silt loam, 0 to 2 percent slopes, frequently flooded	0.43	2.5	119	82	3w
TOTALS		17.19(*)	100%	101.06	72.17	2.46

(*) Total acres may differ in the second decimal compared to the sum of each acreage soil. This is due to a round error because we only show the acres of each soil with two decimal.





|  Boundary 14.03 ac

SOIL CODE	SOIL DESCRIPTION	ACRES	%	PI	NCCPI	CAP
3331A	Haymond silt loam, 0 to 2 percent slopes, frequently flooded	6.43	45.83	119	82	3w
214C3	Hosmer silt loam, 5 to 10 percent slopes, severely eroded	6.12	43.62	78	54	4e
164B	Stoy silt loam, 2 to 5 percent slopes	1.48	10.55	107	77	2w
TOTALS		14.03(*)	100%	99.85	69.26	3.33


(*) Total acres may differ in the second decimal compared to the sum of each acreage soil. This is due to a round error because we only show the acres of each soil with two decimal.



L-2400127

Wabash County, Illinois, 81.502 AC +/-



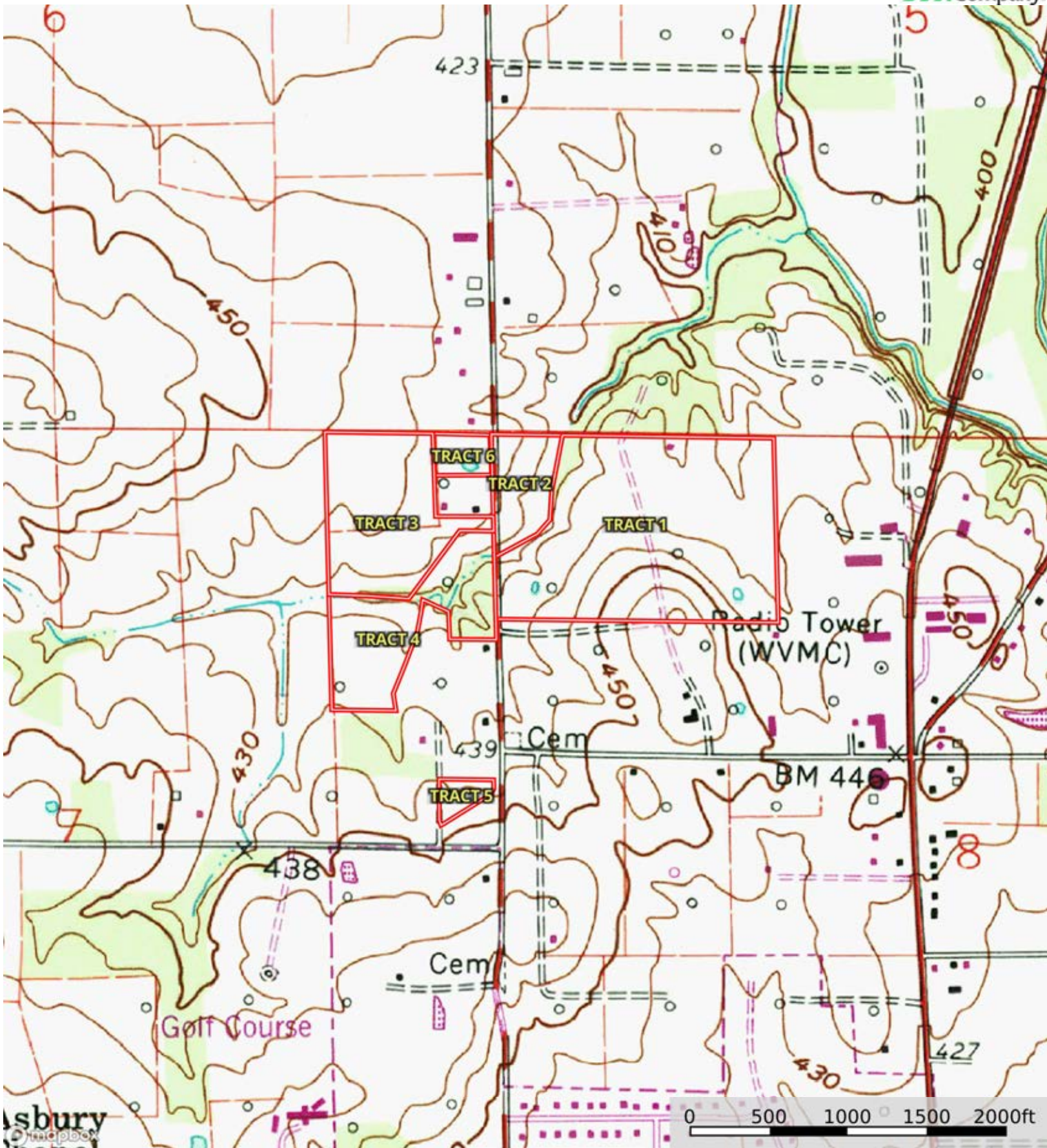
 Boundary

|  Boundary 1.51 ac

SOIL CODE	SOIL DESCRIPTION	ACRES	%	PI	NCCPI	CAP
214C3	Hosmer silt loam, 5 to 10 percent slopes, severely eroded	0.81	53.64	78	54	4e
164B	Stoy silt loam, 2 to 5 percent slopes	0.7	46.36	107	77	2w
TOTALS		1.51(*)	100%	91.44	64.66	3.07

(*) Total acres may differ in the second decimal compared to the sum of each acreage soil. This is due to a round error because we only show the acres of each soil with two decimal.





 Boundary  Boundary