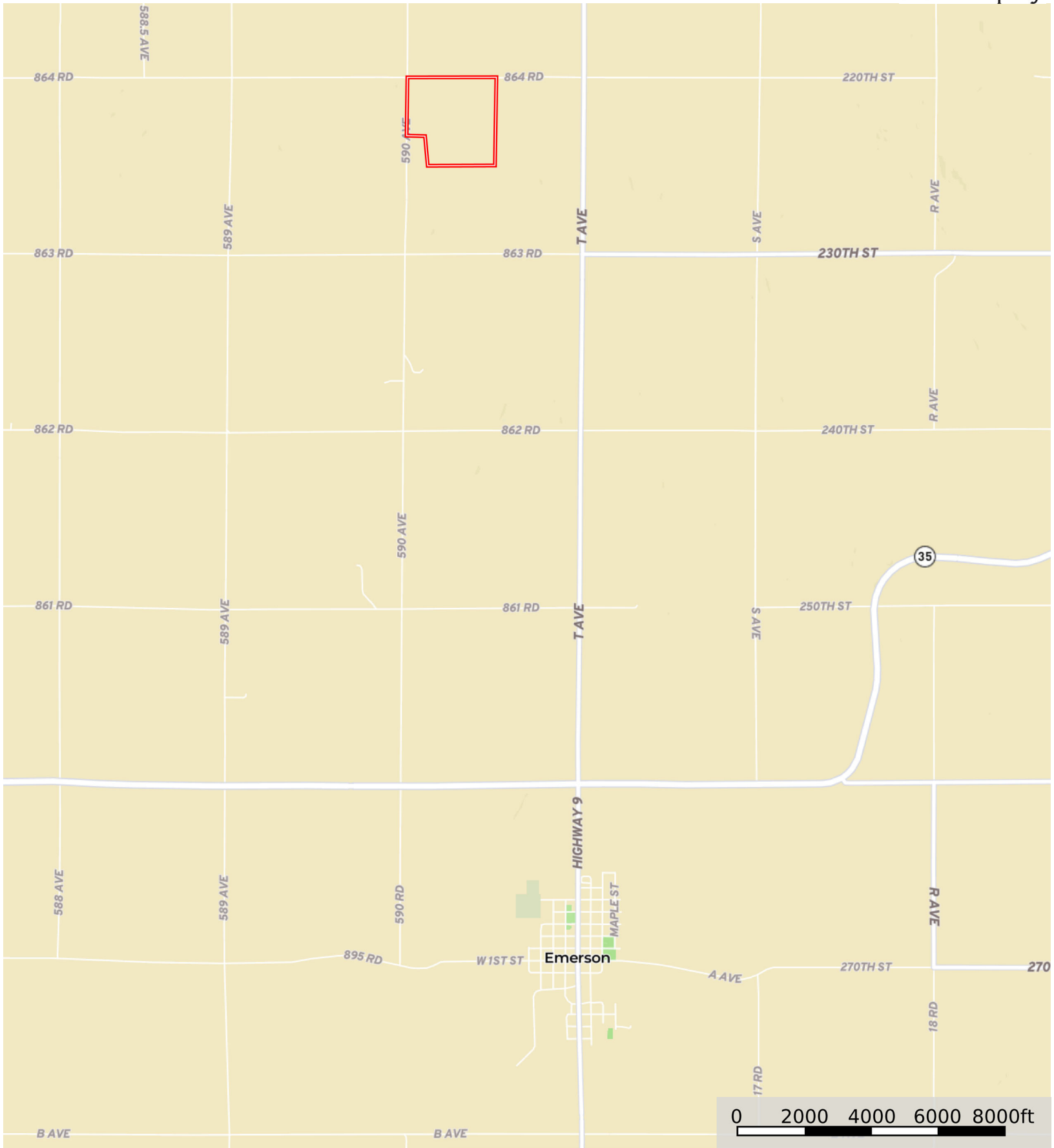


L-2400133

Dixon County, Nebraska, 148.23 AC +/-



 Boundary




The information contained herein was obtained from sources deemed to be reliable. Land id™ Services makes no warranties or guarantees as to the completeness or accuracy thereof.

L-2400133

Dixon County, Nebraska, 148.23 AC +/-



0 200 400 600 800ft

 Boundary



 Boundary

|  Boundary 149.15 ac

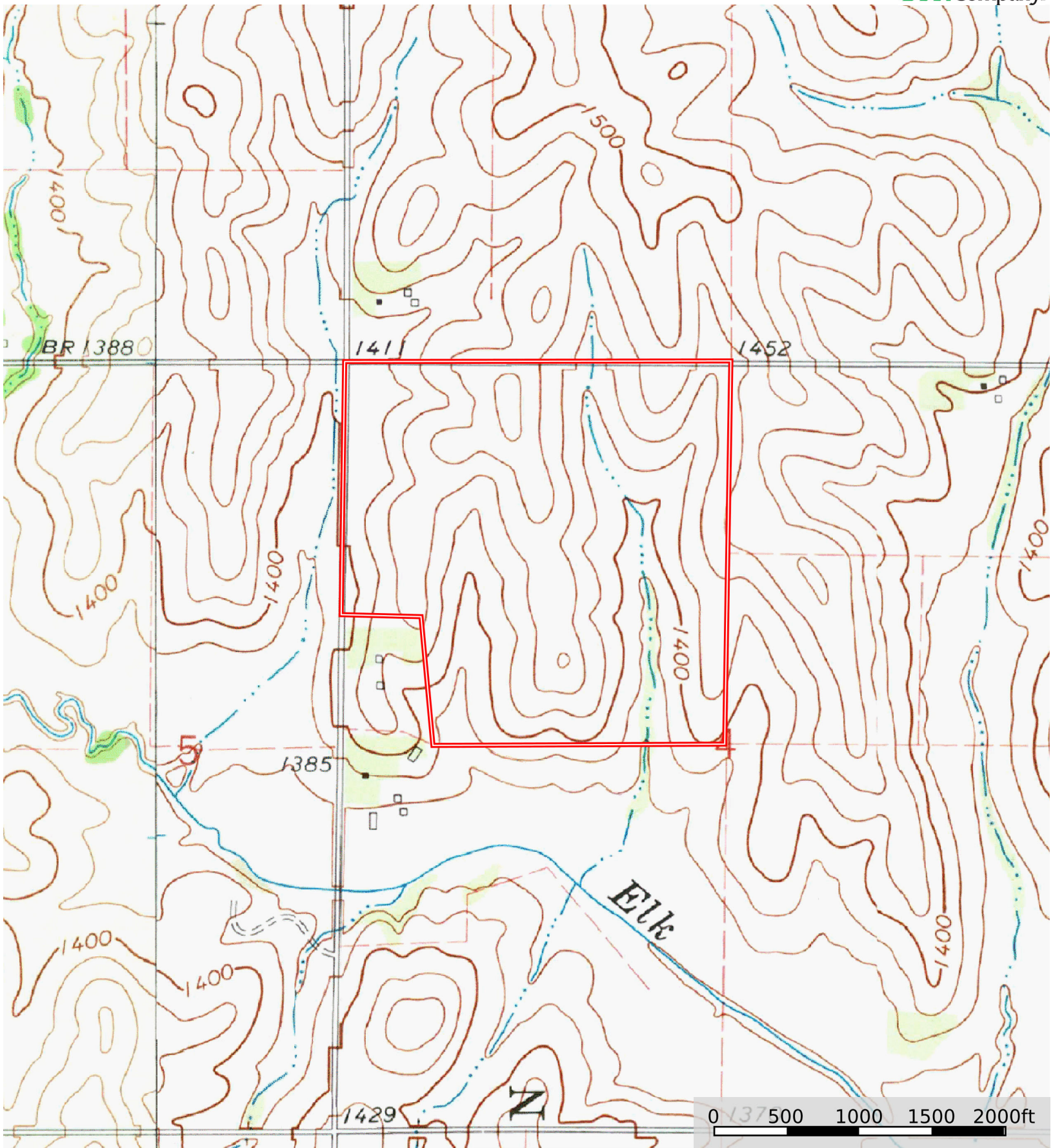
SOIL CODE	SOIL DESCRIPTION	ACRES	%	CPI	NCCPI	CAP
6603	Alcester silty clay loam, 2 to 6 percent slopes	38.59	25.88	91	76	2e
6860	Crofton silt loam, 8 to 17 percent slopes, eroded	35.95	24.1	0	58	4e
6749	Nora silt loam, 11 to 17 percent slopes	26.06	17.47	0	74	4e
6813	Moody silty clay loam, 6 to 11 percent slopes	22.29	14.95	0	74	3e
6681	Crofton silt loam, 17 to 30 percent slopes, eroded	15.5	10.39	0	38	6e
6750	Nora silt loam, 11 to 17 percent slopes, eroded	10.32	6.92	48	63	4e
6687	Crofton silt loam, 6 to 11 percent slopes, eroded	0.24	0.16	0	69	4e
6811	Moody silty clay loam, 2 to 6 percent slopes	0.2	0.13	67	75	2e
TOTALS		149.15(*)	100%	26.96	66.16	3.54


(*) Total acres may differ in the second decimal compared to the sum of each acreage soil. This is due to a round error because we only show the acres of each soil with two decimal.



L-2400133

Dixon County, Nebraska, 148.23 AC +/-



 Boundary