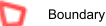
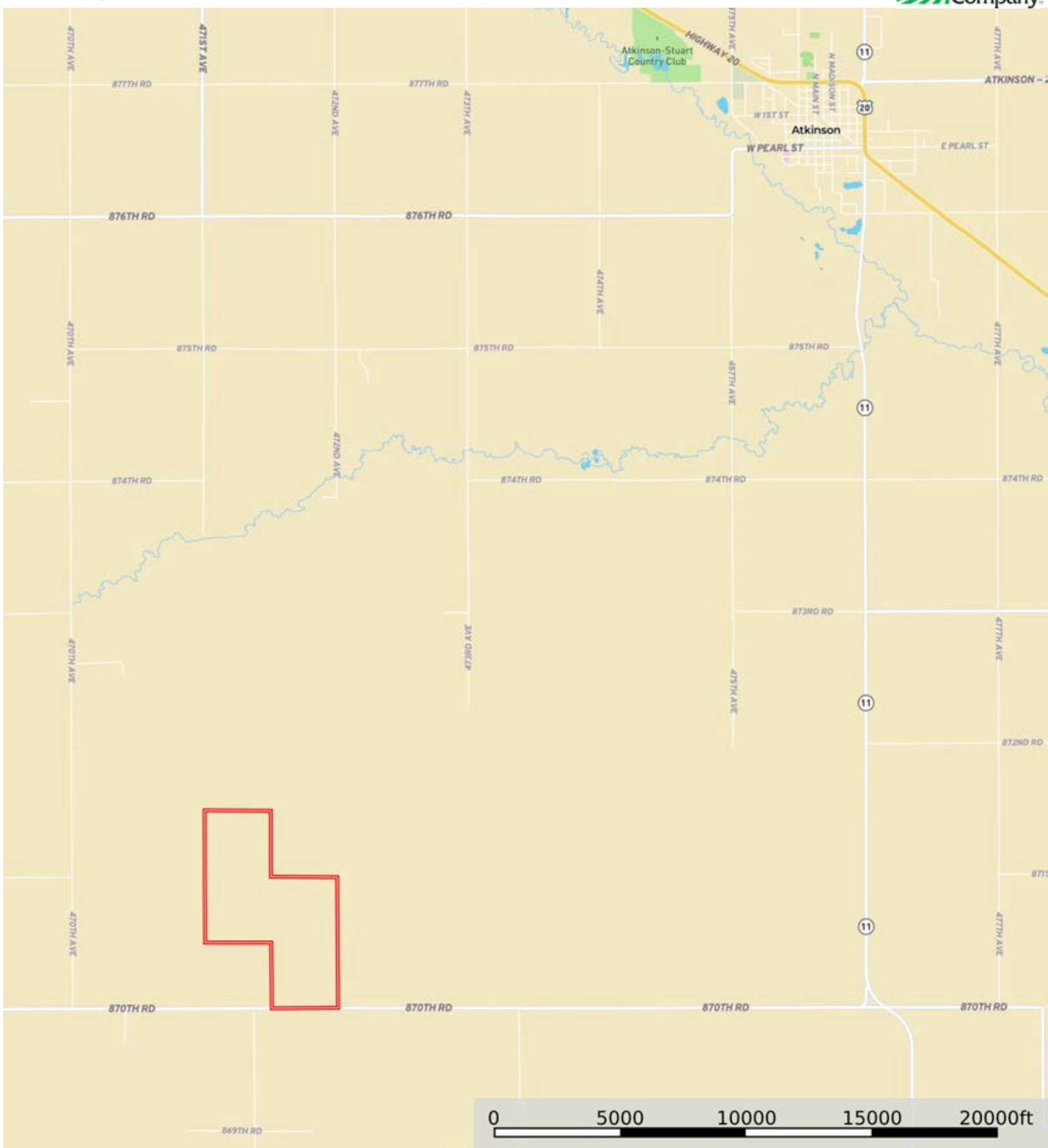


**L-2400177**

Holt County, Nebraska, 640 AC +/-

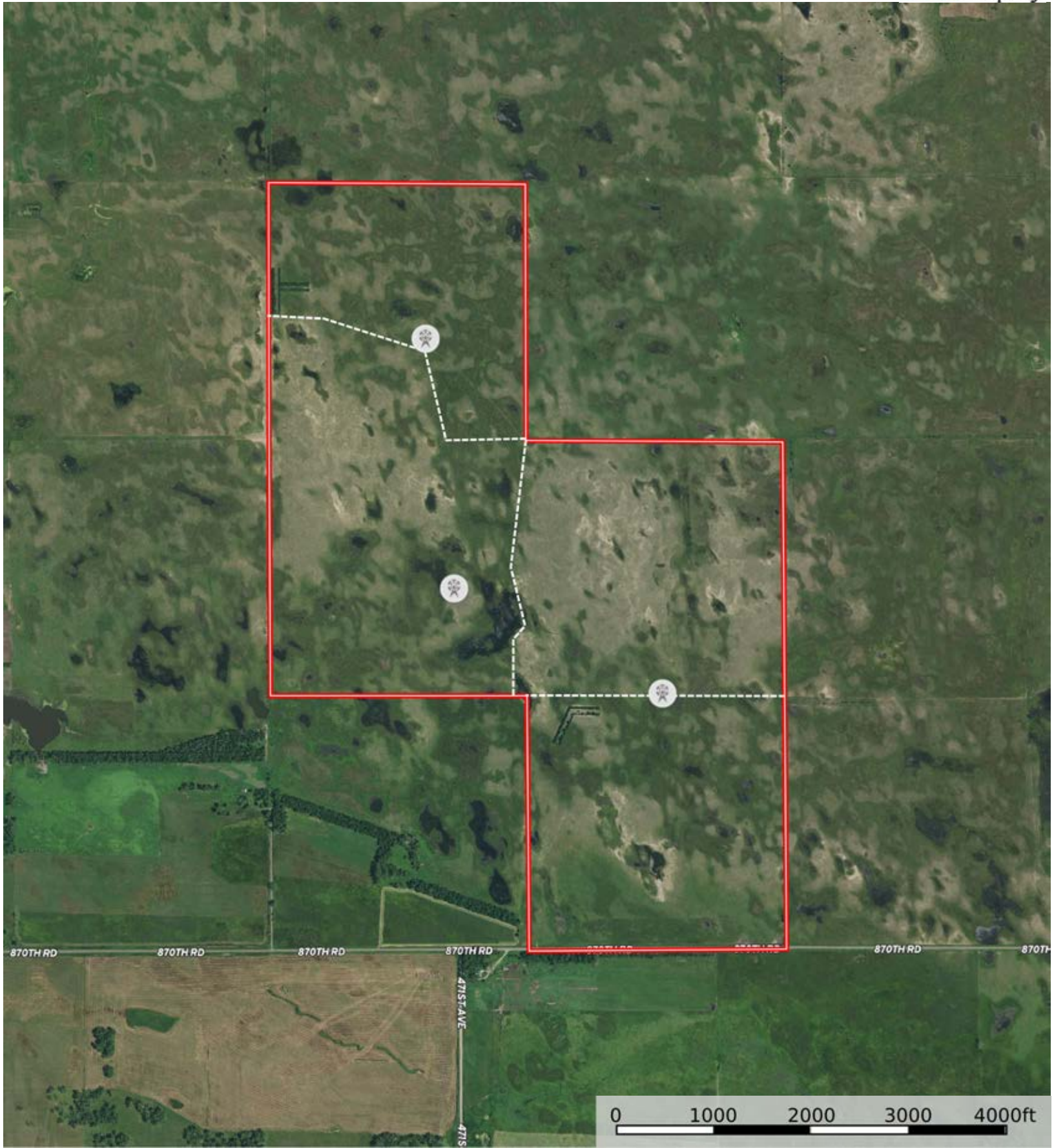


**Cris Miller**  
11516 Nicholas St

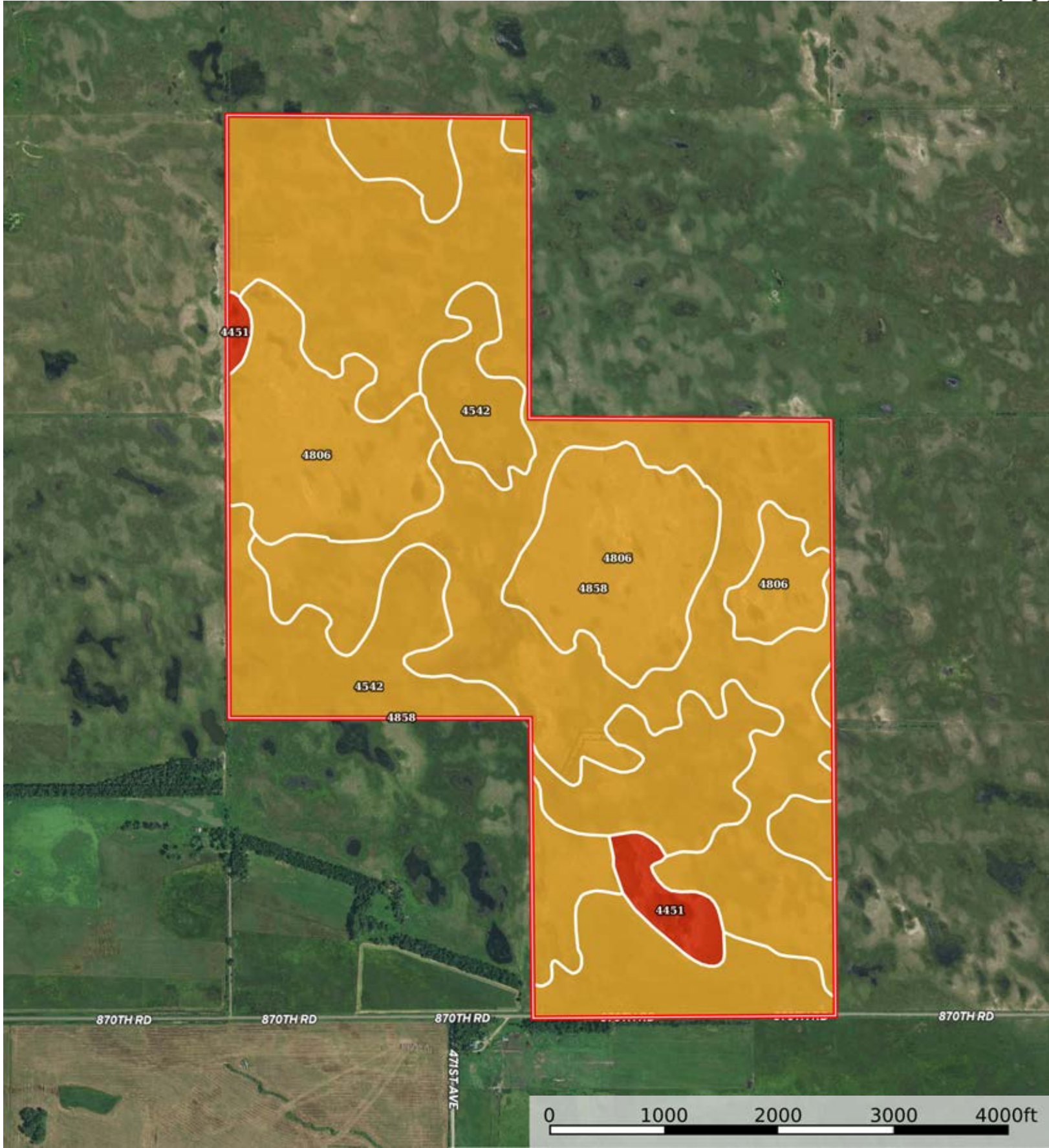


The information contained herein was obtained from sources deemed to be reliable.

Land id™ Services makes no warranties or guarantees as to the completeness or accuracy thereof.



Windmill Fence Boundary



Boundary

|  Boundary 638.87 ac

SOIL CODE	SOIL DESCRIPTION	ACRES	%	CPI	NCCPI	CAP
4858	Valentine-Els complex, moist, 0 to 9 percent slopes	304.7 5	47.7	0	21	6e
4542	Els-lpage complex, 0 to 3 percent slopes	179.2 3	28.05	0	19	6w
4806	Valentine fine sand, rolling, 9 to 24 percent slopes, moist	139.5 1	21.84	0	17	6e
4451	Valentine severely eroded-Valentine complex, moist 0 to 60 percent slopes	15.38	2.41	0	5	8e
TOTALS		638.8 7(*)	100%	-	19.18	6.05

(\*) Total acres may differ in the second decimal compared to the sum of each acreage soil. This is due to a round error because we only show the acres of each soil with two decimal.

## Capability Legend

Increased Limitations and Hazards

Decreased Adaptability and Freedom of Choice Users

Land, Capability

								
	1	2	3	4	5	6	7	8
'Wild Life'	•	•	•	•	•	•	•	•
Forestry	•	•	•	•	•	•	•	
Limited	•	•	•	•	•	•	•	
Moderate	•	•	•	•	•	•		
Intense	•	•	•	•	•			
Limited	•	•	•	•				
Moderate	•	•	•					
Intense	•	•						
Very Intense	•							

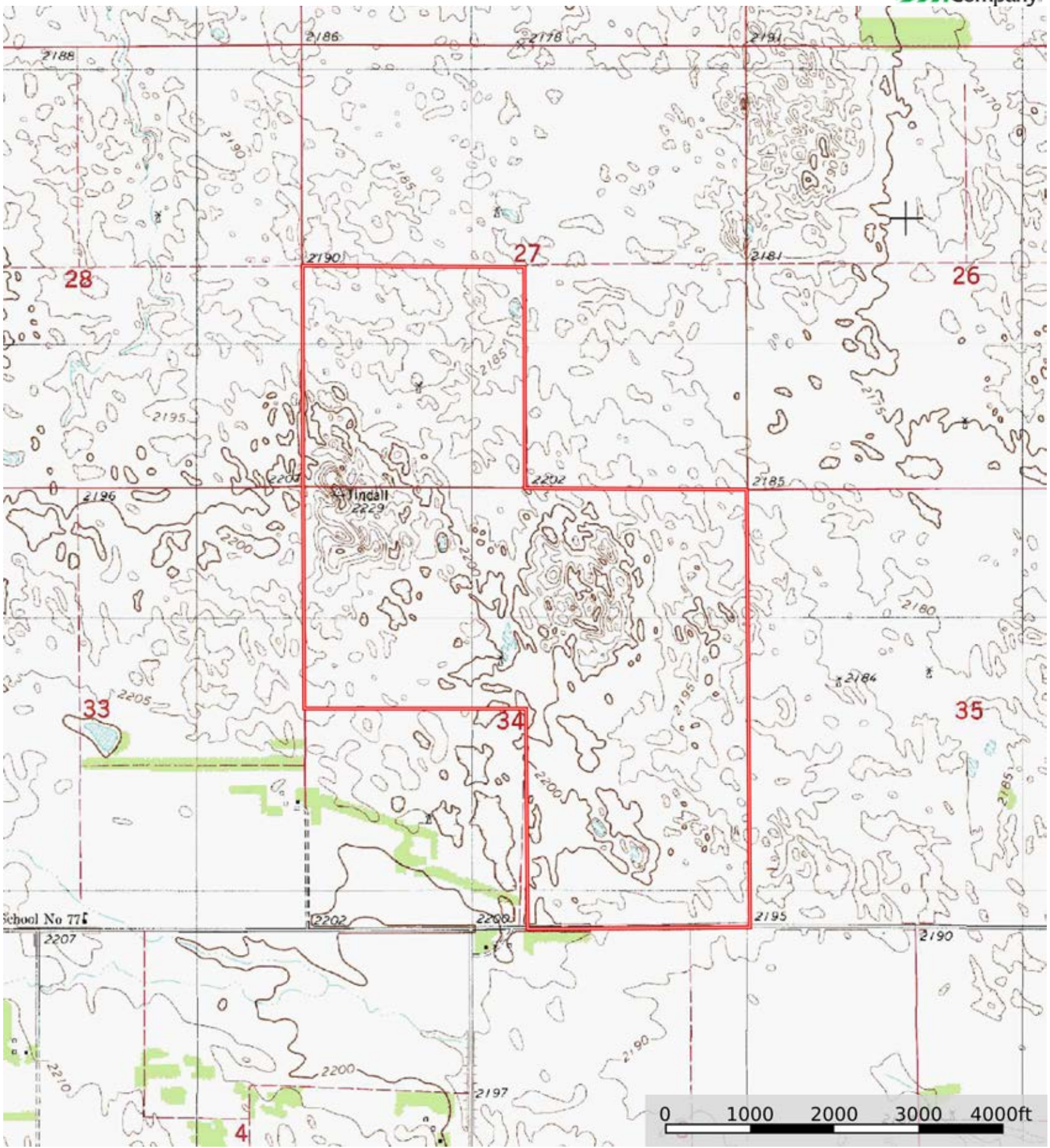
## Grazing Cultivation

(c) climatic limitations (e) susceptibility to erosion

(s) soil limitations within the rooting zone (w) excess of water

L-2400177

Holt County, Nebraska, 640 AC +/-



Boundary

Cris Miller  
11516 Nicholas St

The information contained herein was obtained from sources deemed to be reliable. Land id™ Services makes no warranties or guarantees as to the completeness or accuracy thereof.