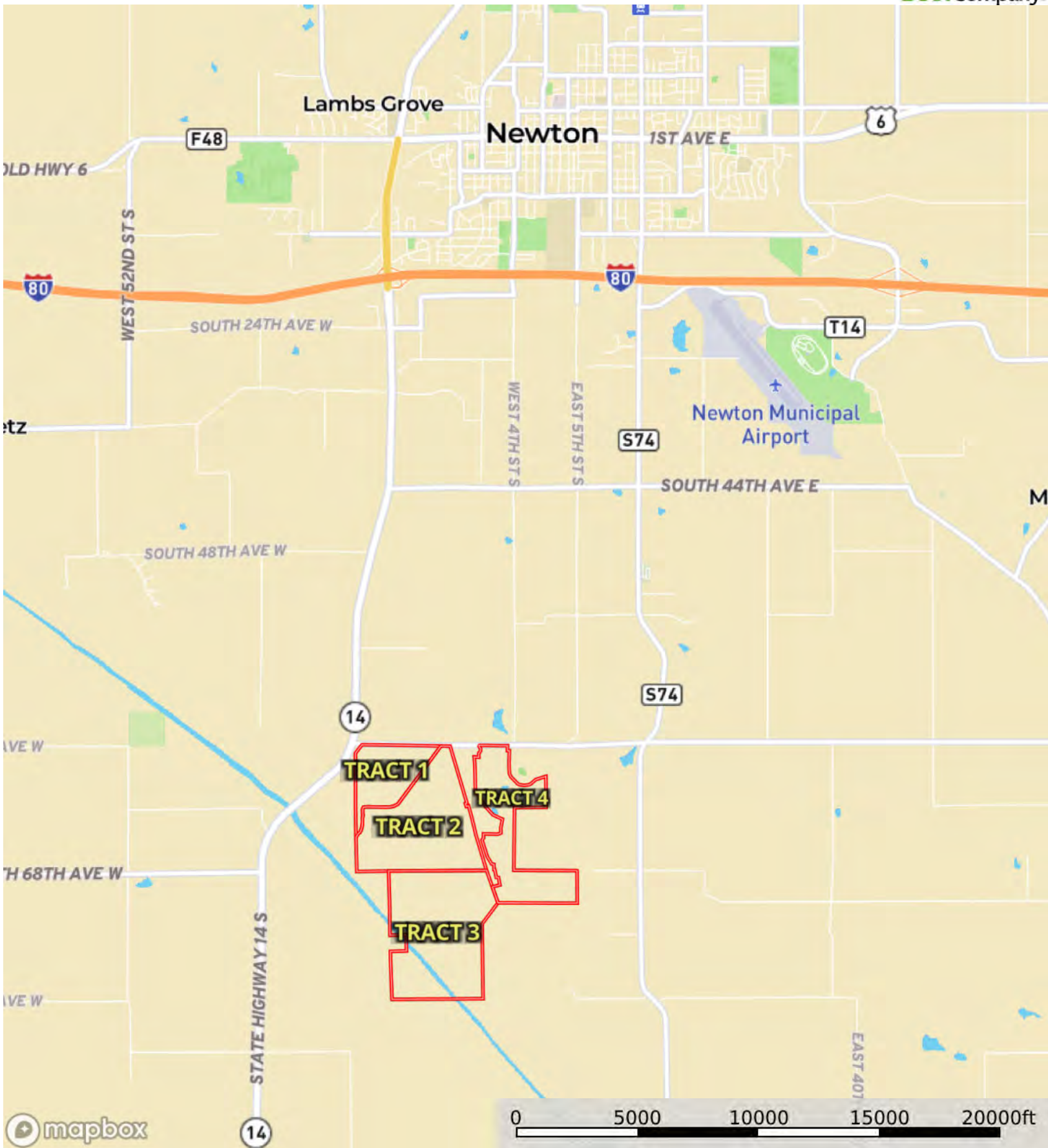
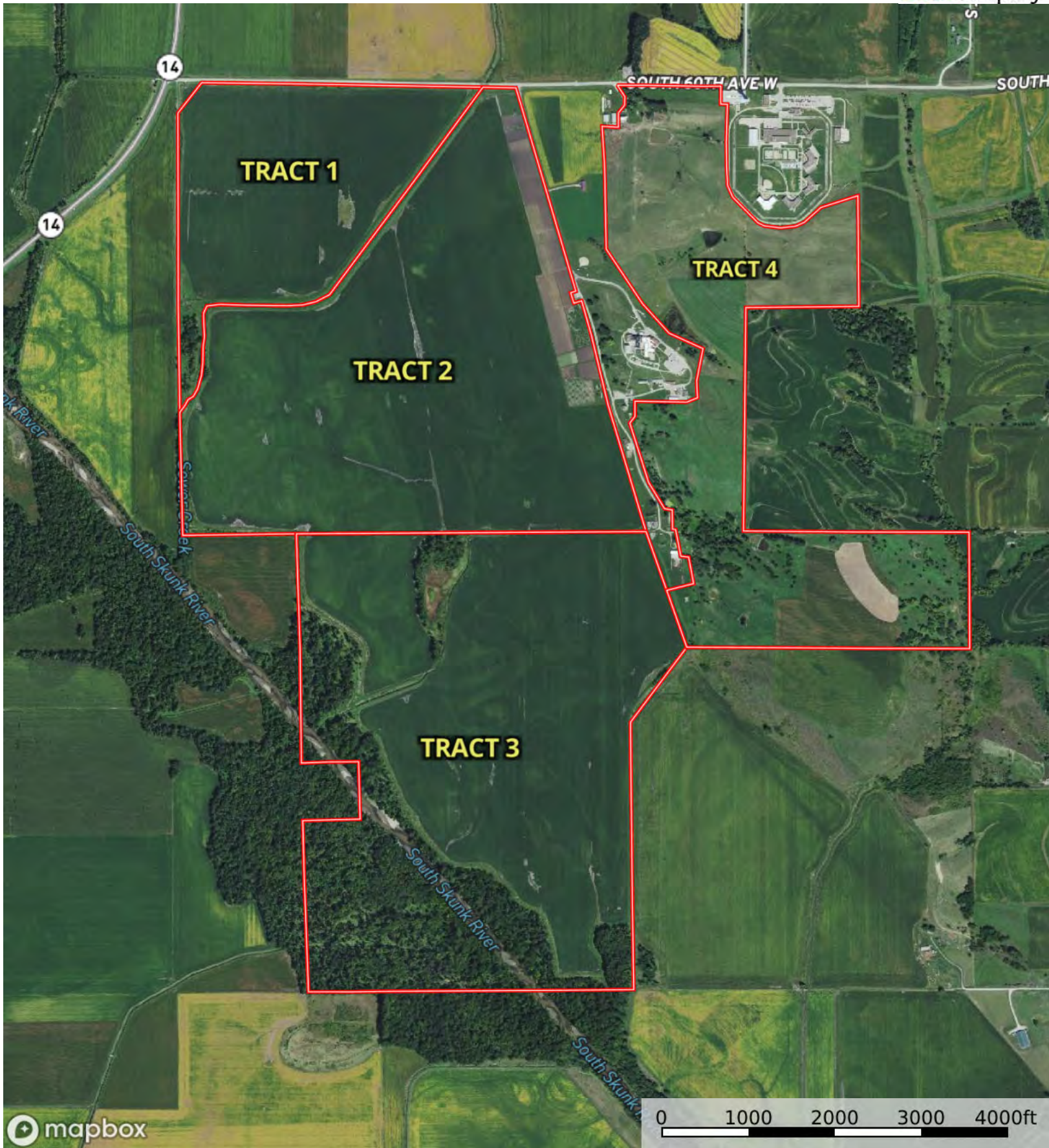


L-2400179

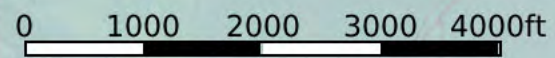
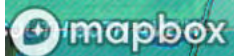
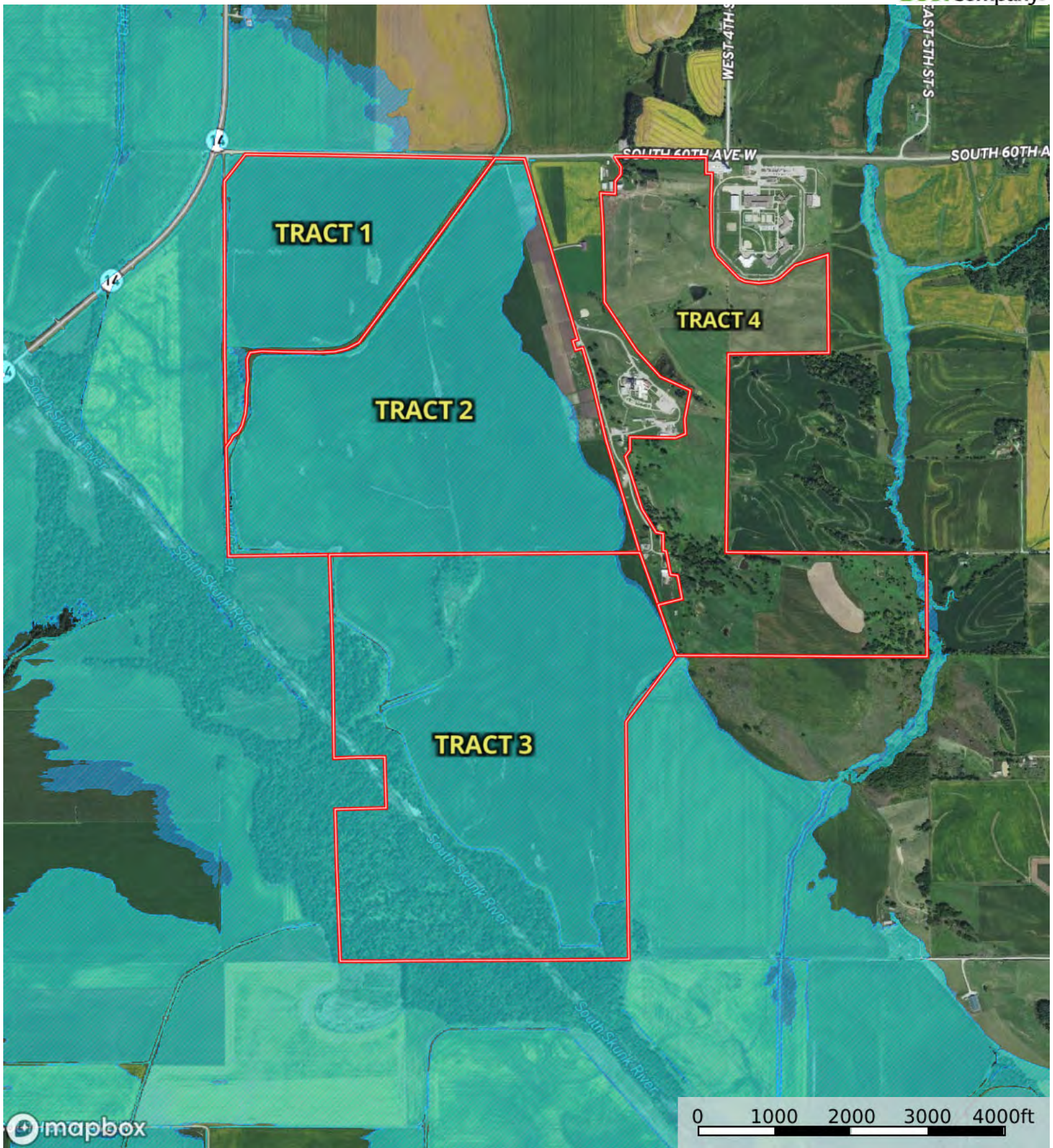
Jasper County, Iowa, 1326.54 AC +/-



Boundary



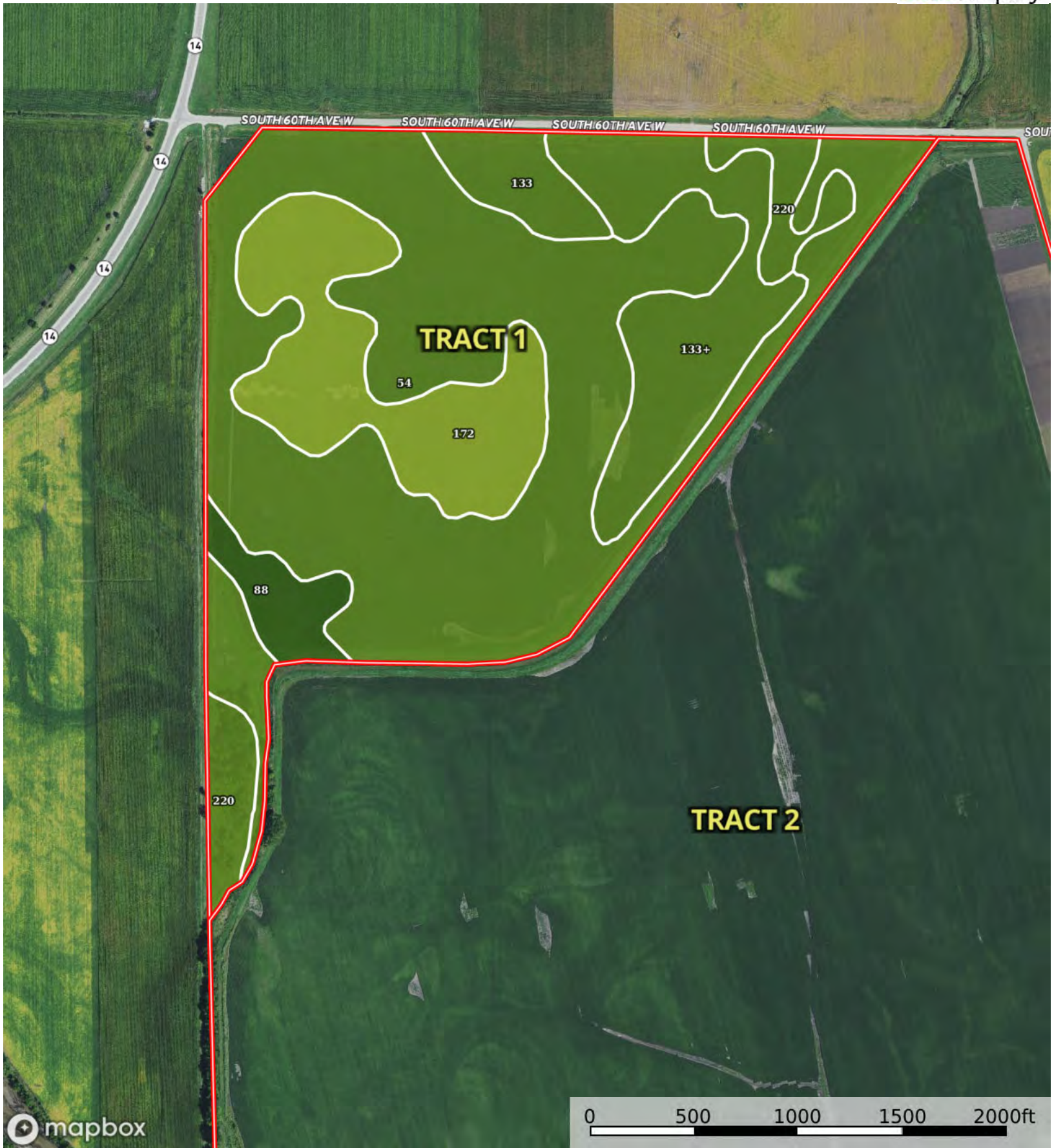
Boundary



- Boundary
- 100 Year Floodplain
- 500 Year Floodplain
- Floodway
- Special
- Unmapped/ Not Included



Boundary

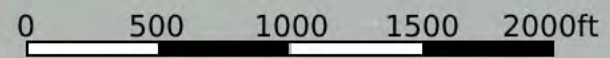
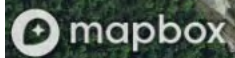
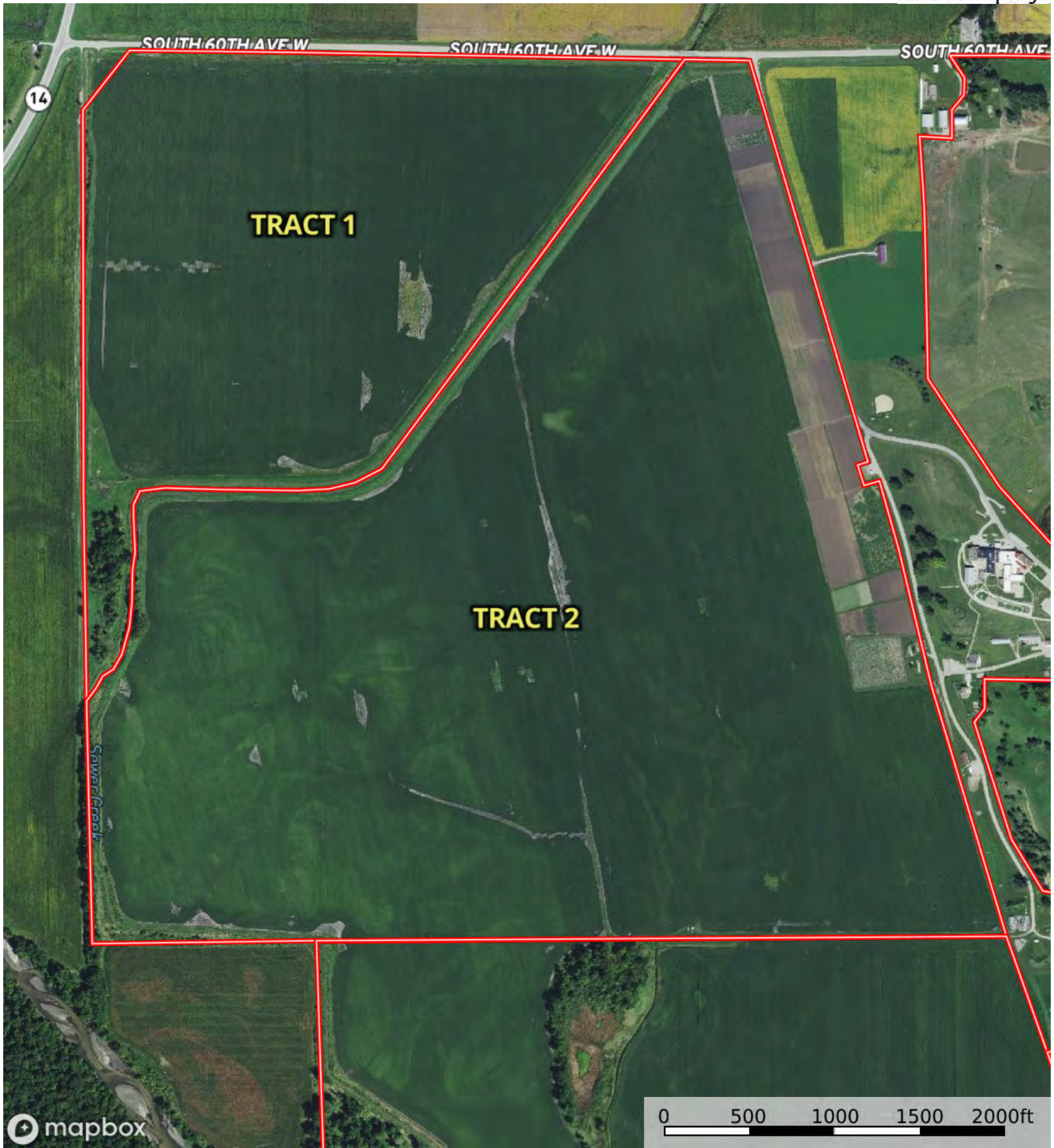


| Boundary 159.11 ac

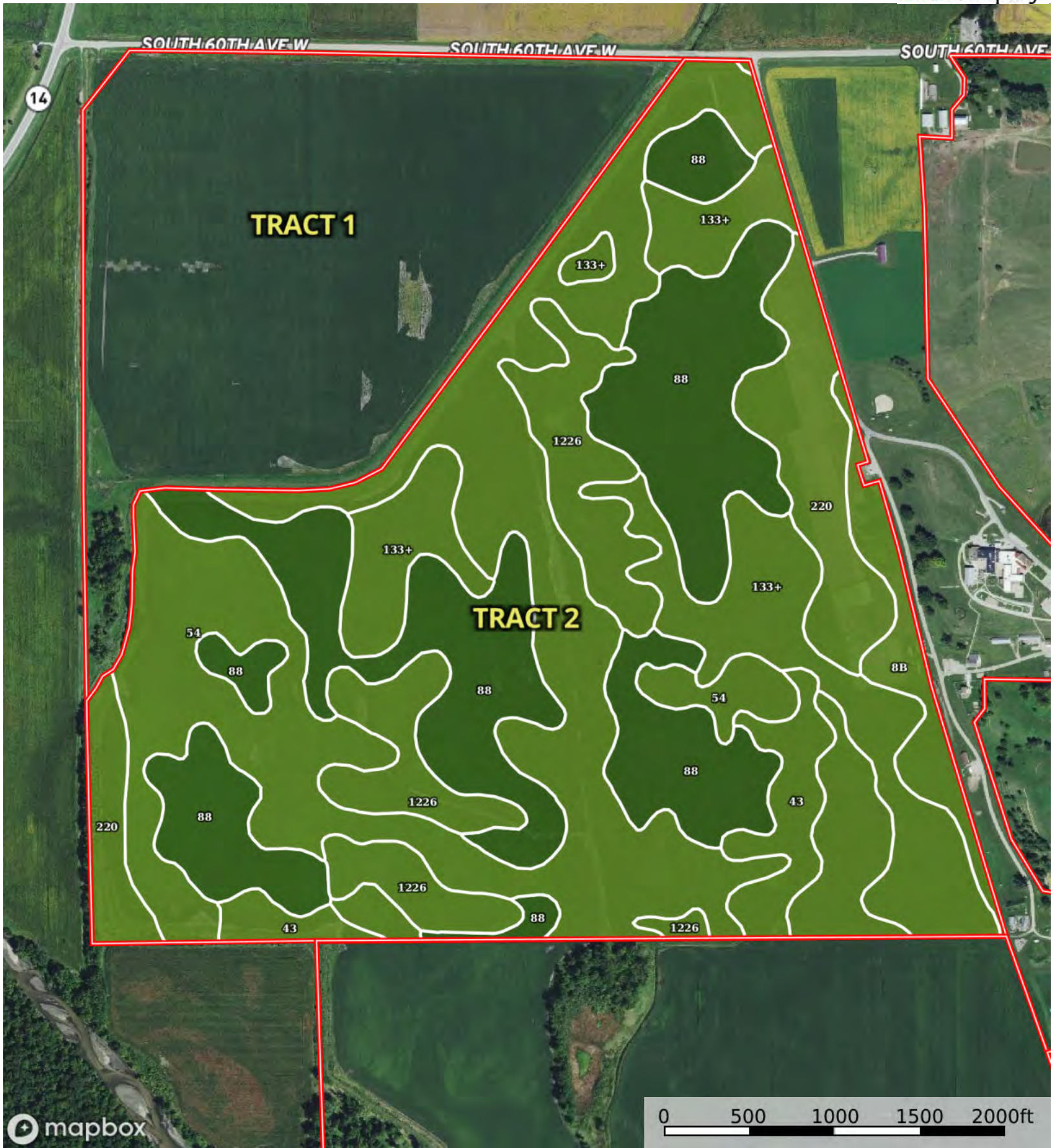
SOIL CODE	SOIL DESCRIPTION	ACRES	%	CSR2	CPI	NCCPI	CAP
54	Zook silty clay loam, 0 to 2 percent slopes, occasionally flooded	90.75	57.04	60.0	0	63	2w
172	Wabash silty clay, 0 to 2 percent slopes	25.54	16.05	38.0	0	48	3w
133+	Colo silt loam, 0 to 2 percent slopes, occasionally flooded, overwash	22.01	13.83	78.0	0	82	2w
220	Nodaway silt loam, shallow loess, 0 to 2 percent slopes, occasionally flooded	9.0	5.66	77.0	0	93	2w
133	Colo silty clay loam, 0 to 2 percent slopes, occasionally flooded	6.18	3.88	78.0	0	78	2w
88	Nevin silty clay loam, 0 to 2 percent slopes	5.63	3.54	92.0	0	98	1
TOTALS		159.1 1(*)	100%	61.76	-	66.74	2.13

(*) Total acres may differ in the second decimal compared to the sum of each acreage soil. This is due to a round error because we only show the acres of each soil with two decimal.





Boundary



Boundary 396.37 ac

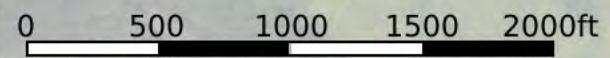
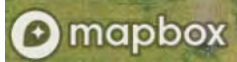
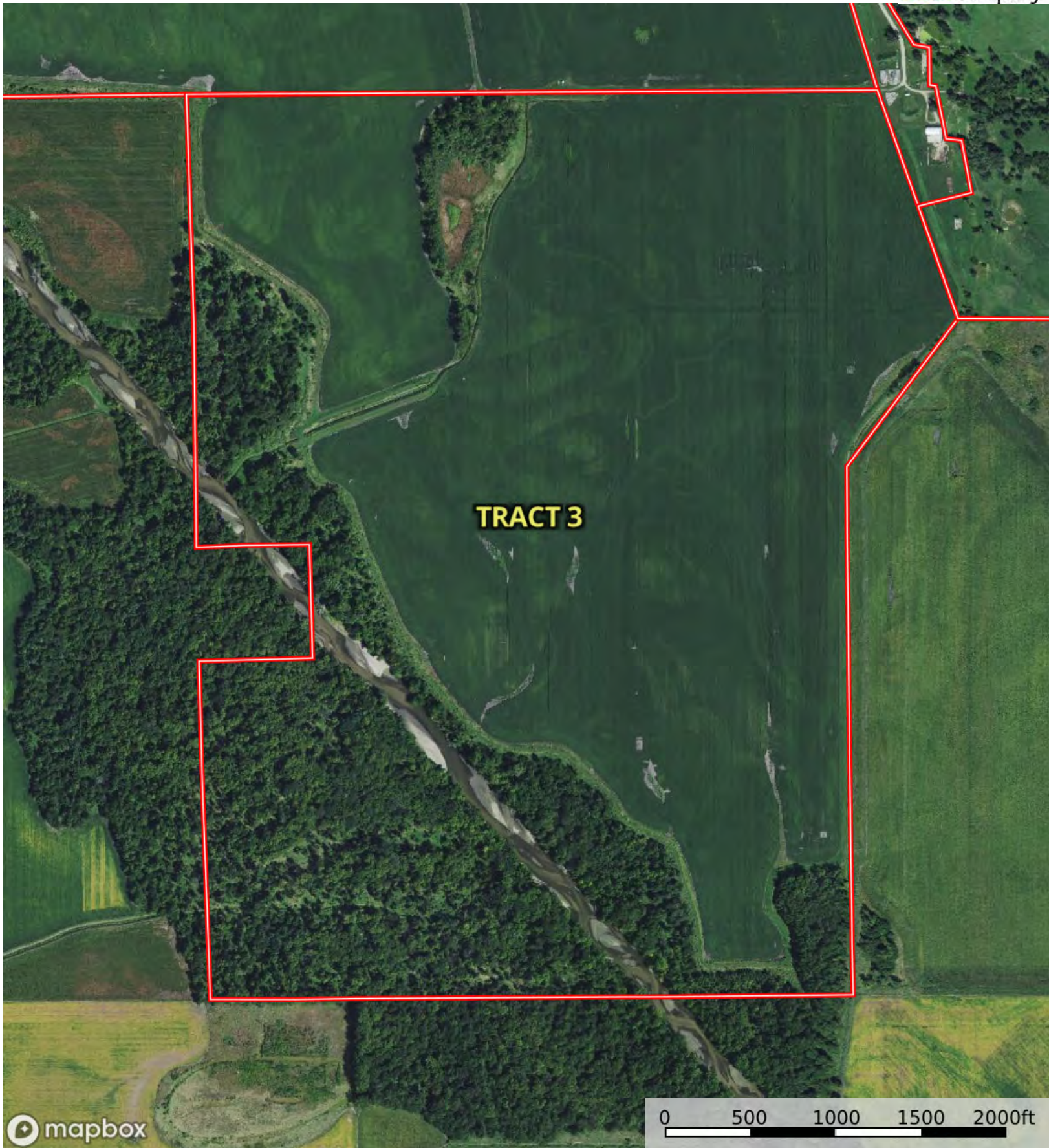
SOIL CODE	SOIL DESCRIPTION	ACRES	%	CSR2	CPI	NCCPI	CAP
54	Zook silty clay loam, 0 to 2 percent slopes, occasionally flooded	136.9	34.54	60.0	0	63	2w
88	Nevin silty clay loam, 0 to 2 percent slopes	110.47	27.87	92.0	0	98	1
133+	Colo silt loam, 0 to 2 percent slopes, occasionally flooded, overwash	53.56	13.51	78.0	0	82	2w
1226	Lawler loam, 0 to 2 percent slopes, rarely flooded	37.46	9.45	59.0	0	87	2s
220	Nodaway silt loam, shallow loess, 0 to 2 percent slopes, occasionally flooded	30.42	7.67	77.0	0	93	2w
43	Bremer silty clay loam, 0 to 2 percent slopes, occasionally flooded	15.3	3.86	74.0	0	78	2w
8B	Judson silty clay loam, 2 to 5 percent slopes	12.26	3.09	84.0	0	76	2e
TOTALS		396.37(*)	100%	73.84	-	80.87	1.72

(*) Total acres may differ in the second decimal compared to the sum of each acreage soil. This is due to a round error because we only show the acres of each soil with two decimal.

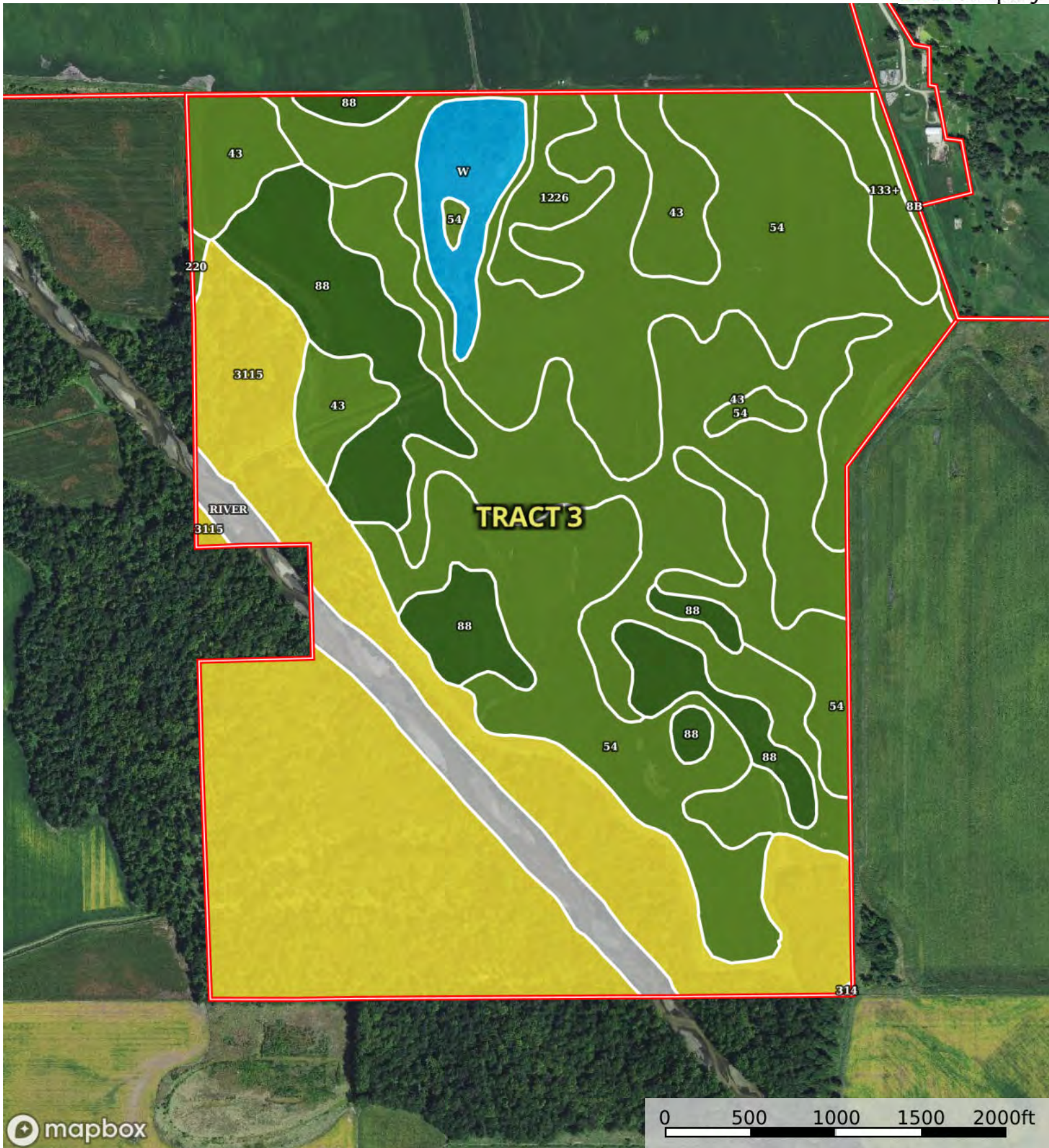


L-2400179

Jasper County, Iowa, 1326.54 AC +/-



Boundary



| Boundary 475.43 ac

SOIL CODE	SOIL DESCRIPTION	ACRES	%	CSR2	CPI	NCCPI	CAP
54	Zook silty clay loam, 0 to 2 percent slopes, occasionally flooded	146.3 2	30.78	60.0	0	63	2w
3115	Colo, overwash-Lawson complex, channeled, 0 to 2 percent slopes, frequently flooded	136.9 6	28.81	5.0	0	10	5w
43	Bremer silty clay loam, 0 to 2 percent slopes, occasionally flooded	96.28	20.25	74.0	0	78	2w
88	Nevin silty clay loam, 0 to 2 percent slopes	47.09	9.9	92.0	0	98	1
RIVER	Water, rivers and streams	17.61	3.7	-	0	-	-
W	Water	12.53	2.64	-	0	-	-
1226	Lawler loam, 0 to 2 percent slopes, rarely flooded	8.36	1.76	59.0	0	87	2s
133+	Colo silt loam, 0 to 2 percent slopes, occasionally flooded, overwash	7.89	1.66	78.0	0	82	2w
8B	Judson silty clay loam, 2 to 5 percent slopes	1.72	0.36	84.0	0	76	2e
220	Nodaway silt loam, shallow loess, 0 to 2 percent slopes, occasionally flooded	0.57	0.12	77.0	0	93	2w
314	Lawson-Nodaway-Colo Complex, 0 to 2 percent slopes, occasionally flooded	0.1	0.02	77.0	0	89	2w
TOTALS		475.4 3(*)	100%	46.75	-	51.07	2.82









(*) Total acres may differ in the second decimal compared to the sum of each acreage soil. This is due to a round error because we only show the acres of each soil with two decimal.

Capability Legend

Increased Limitations and Hazards

Decreased Adaptability and Freedom of Choice Users

Land, Capability

								
	1	2	3	4	5	6	7	8
'Wild Life'	•	•	•	•	•	•	•	•
Forestry	•	•	•	•	•	•	•	
Limited	•	•	•	•	•	•	•	
Moderate	•	•	•	•	•	•		
Intense	•	•	•	•	•			
Limited	•	•	•	•				
Moderate	•	•	•					
Intense	•	•						
Very Intense	•							

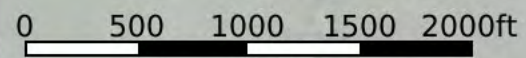
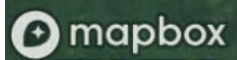
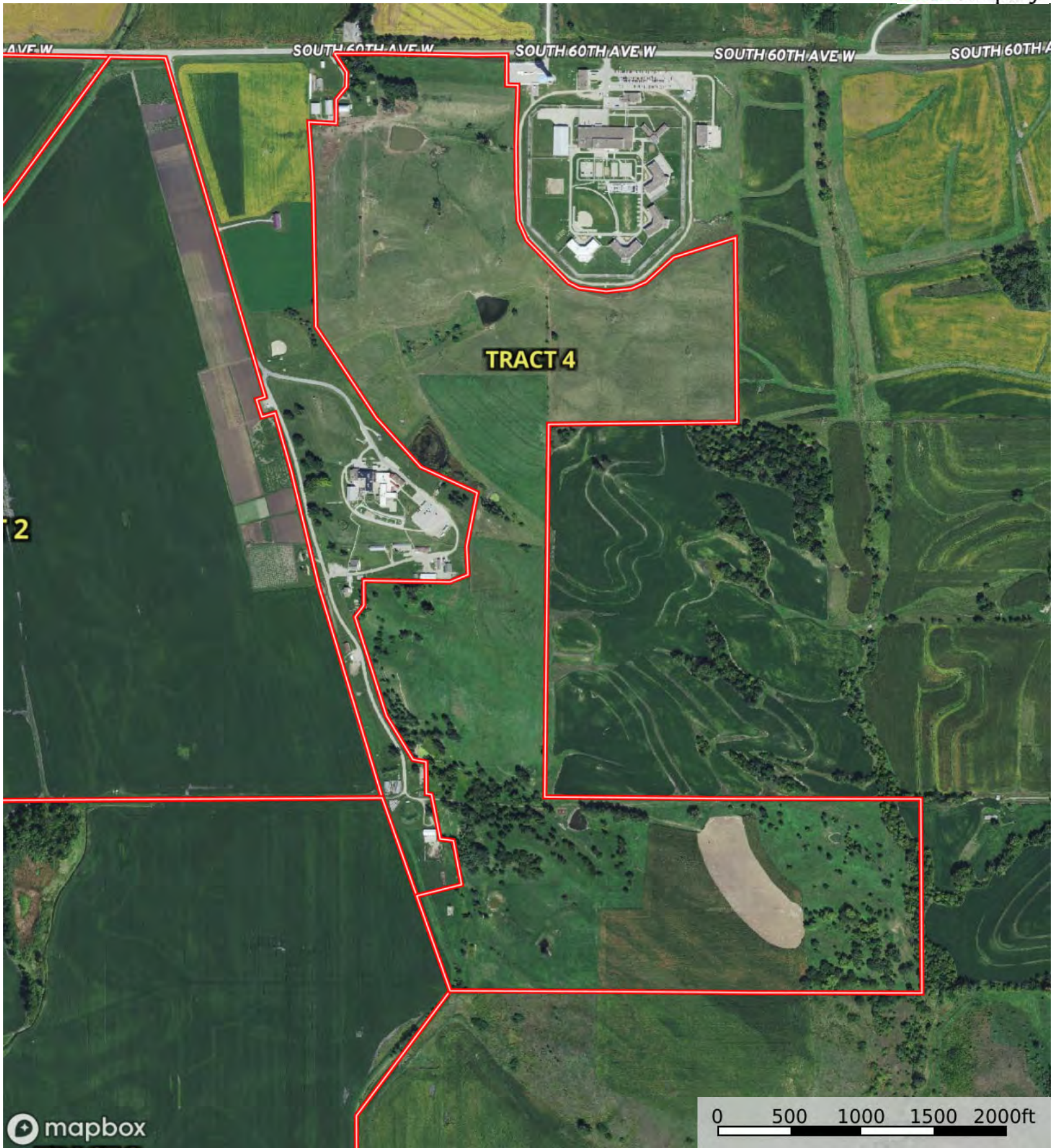
Grazing Cultivation

(c) climatic limitations (e) susceptibility to erosion

(s) soil limitations within the rooting zone (w) excess of water

L-2400179

Jasper County, Iowa, 1326.54 AC +/-



Boundary



Boundary 275.52 ac

SOIL CODE	SOIL DESCRIPTION	ACRES	%	CSR2	CPI	NCCPI	CAP
620E2	Port Byron silt loam, 14 to 18 percent slopes, moderately eroded	79.15	28.73	45.0	0	77	4e
620D2	Port Byron silt loam, 9 to 14 percent slopes, moderately eroded	49.91	18.11	59.0	0	81	3e
8B	Judson silty clay loam, 2 to 5 percent slopes	30.58	11.1	84.0	0	76	2e
620F2	Port Byron silt loam, 18 to 25 percent slopes, moderately eroded	29.73	10.79	28.0	0	62	6e
175D	Dickinson fine sandy loam, 9 to 14 percent slopes	22.2	8.06	19.0	0	60	3e
293G	Chelsea-Fayette-Lamont complex, 25 to 40 percent slopes	18.97	6.89	5.0	0	14	7s
M162C2	Downs silt loam, till plain, 5 to 9 percent slopes, eroded	9.49	3.44	82.0	0	85	3e
M162E2	Downs silt loam, till plain, 14 to 18 percent slopes, eroded	7.91	2.87	45.0	0	77	4e
5B	Ackmore-Colo complex, 2 to 5 percent slopes	7.8	2.83	77.0	0	88	2w
M162D2	Downs silt loam, till plain, 9 to 14 percent slopes, eroded	6.83	2.48	57.0	0	81	4e
620C2	Port Byron silt loam, 5 to 9 percent slopes, moderately eroded	5.77	2.09	87.0	0	85	3e
5040	Anthroportic Udorthents, 2 to 9 percent slopes	3.94	1.43	5.0	0	79	6s
W	Water	2.37	0.86	-	0	-	-
175C	Dickinson fine sandy loam, 5 to 9 percent slopes	0.55	0.2	45.0	0	62	3e
M163F2	Fayette silt loam, till plain, 18 to 25 percent slopes, eroded	0.16	0.06	18.0	0	60	6e
220	Nodaway silt loam, shallow loess, 0 to 2 percent slopes, occasionally flooded	0.16	0.06	77.0	0	93	2w
TOTALS		275.52(*)	100%	47.58	-	70.48	3.85









(*) Total acres may differ in the second decimal compared to the sum of each acreage soil. This is due to a round error because we only show the acres of each soil with two decimal.

Capability Legend

Increased Limitations and Hazards

Decreased Adaptability and Freedom of Choice Users

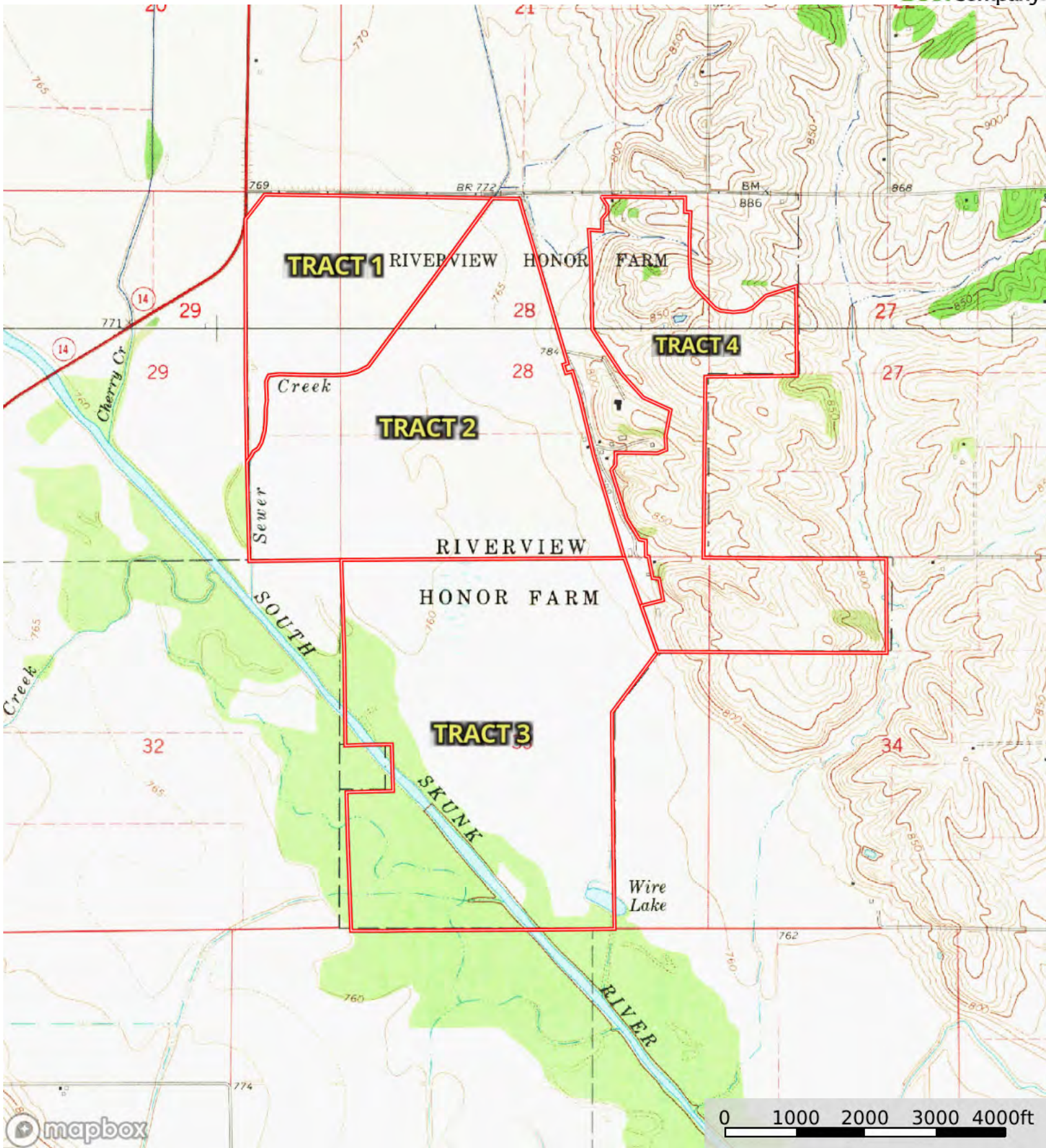
Land, Capability

								
	1	2	3	4	5	6	7	8
'Wild Life'	•	•	•	•	•	•	•	•
Forestry	•	•	•	•	•	•	•	
Limited	•	•	•	•	•	•	•	
Moderate	•	•	•	•	•	•		
Intense	•	•	•	•	•			
Limited	•	•	•	•				
Moderate	•	•	•					
Intense	•	•						
Very Intense	•							

Grazing Cultivation

(c) climatic limitations (e) susceptibility to erosion

(s) soil limitations within the rooting zone (w) excess of water



Boundary