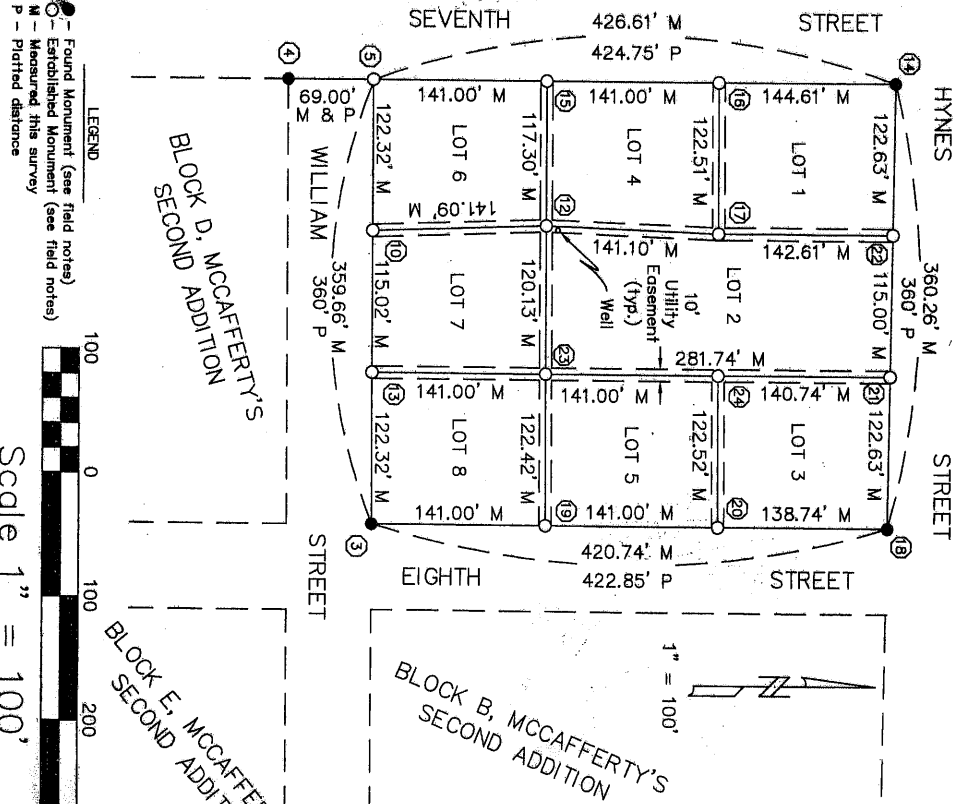


Lichty Subdivision

A Subdivision of Block C, McCafferty's Addition to the City of O'Neill, Holt County, Nebraska



LEGEND
 - Found Monument (see field notes)
 - Established Monument (see field notes)
 M - Measured this survey
 P - Plotted distance



Rasmussen Land Surveying, LLC
 85774 US Highway 281
 O'Neill, Nebraska 68078
 Phone/Fac: (402) 482-5891

A LEGAL SUBDIVISION OF BLOCK C, MCCAFFERTY'S SECOND ADDITION, CITY OF ONEILL, HOLT COUNTY, NEBRASKA

FINAL PLAT
 LICHTY SUBDIVISION

This plat was prepared at the request of Kevin Lichty, O'Neill, Nebraska.

OWNER'S CERTIFICATION
 I, John L. Lichty, owner of the real estate shown and described herein, do hereby certify that it has surveyed, plotted and subdivided, and do hereby survey, plot and subdivide, said real estate in accordance with this plat.

This subdivision shall be known and designated as Lichty Subdivision, a subdivision of Block C, McCafferty's Second Addition, City of O'Neill, Holt County, Nebraska. All streets and alleys shown and not heretofore dedicated are hereby dedicated to the public unless specifically noted herein. Any other public lands shown herein and not heretofore dedicated are hereby reserved for public use with provisions for maintenance by the owners of property within the subdivision unless specifically noted herein. Clear title to the land contained in this plat is guaranteed. Any encumbrances or special assessments are explained as follows:
 There are strips of land shown on or within this plat and marked easement, reserved for the use of public utilities or other utility so indicated and said easements are subject to the permanent right of the utility or other entity so indicated to install, repair, replace and maintain its installations.
 Witness my hand on this 12th day of December, 2006

John L. Lichty
 By: [Signature]
 John Lichty
 Notary Public
 STATE OF NEBRASKA
 My Comm. Exp. 6-12-2009

COUNTY OF HOLT
 Before me, the undersigned Notary Public, in and for the County and State, personally appeared and each separately and severally acknowledged the execution of the foregoing instrument as his or her voluntary act and deed for the purposes therein expressed. Witness my hand and Notarial Seal this 12th day of December, 2006.



Carol Hammerstein
 Notary Public
 Notarial Seal

LOT	ACREAGE	FOOTAGE
1	0.404	17601.25
2	0.735	32869.04
3	0.735	32869.04
4	0.396	17227.15
5	0.396	17227.15
6	0.396	17286.09
7	0.381	16892.94
8	0.381	15978.54
	0.386	17254.09

Field Notes:
 Point #1 - Found 2" Iron Pipe, as recorded by myself, on subdivision plat dated 12/28/2004.
 Point #4, #14 & #18 - Found 1" Iron Pipe.
 Point #5 - Set 1" X 28" Iron Pipe with stamped plastic cap.
 Point #10, #12, #13, #15, #16, #17, #19, #20, #21, #22, #23 & #24 - Set 5/8" X 30" Rod with stamped plastic cap.

PLANNING COMMISSION CERTIFICATION
 The foregoing plat was reviewed at public hearing by the Planning Commission of O'Neill, Nebraska on this 12th day of December, 2006. This plat is void unless recorded before the 12th day of December, 2007.

ACCEPTANCE CERTIFICATE
 The foregoing plat and dedications are approved and accepted by the Mayor and City Council of the City of O'Neill, Nebraska on this 12th day of December, 2006.
 Mayor: [Signature]
 Attest: City Clerk: [Signature]
 Planning Commission Chairman: [Signature]

HOLT COUNTY TREASURER CERTIFICATION
 This is to certify that I have found no regular or special taxes or assessments due or delinquent against the real property described in this plat, as shown by records of the Office as of this 12th day of December, 2006.
 Holt County Treasurer: [Signature]

REGISTRAR OF DEEDS CERTIFICATION
 This instrument was filed for record on 12th day of December, 2006 at 11 o'clock AM and duly recorded and entered for taxation in Vol. 352 of Book 114 Page 352. A recording fee of \$ 14.00 was paid. Dated this 13th day of December, 2006.
 Grant Anthony Clark
 Holt County Registrar of Deeds

SURVEYOR'S CERTIFICATION
 I, Steven L. Rasmussen, hereby certify that I am a professional land surveyor, registered in compliance with the laws of the State of Nebraska, that this plat correctly represents a survey conducted by me or under my direct supervision on October 12th, 2006, that any changes from the description appearing in the first record transfer of the land contained in this plat are so indicated that all monuments shown hereon actually exist as described on the ground or will be installed and their position is correctly shown, and that all dimensional and directional data are correct.
 Steven L. Rasmussen, RLS #624
 Date: 12/12/2006



DATE	BY	REVISION
10/13/06	DLH	Project #1R942
		Scale 1" = 100'
		Field Book 07
		File Name LICHTY.DWG
		Revision
		Revision
		Sheet 1 of 1