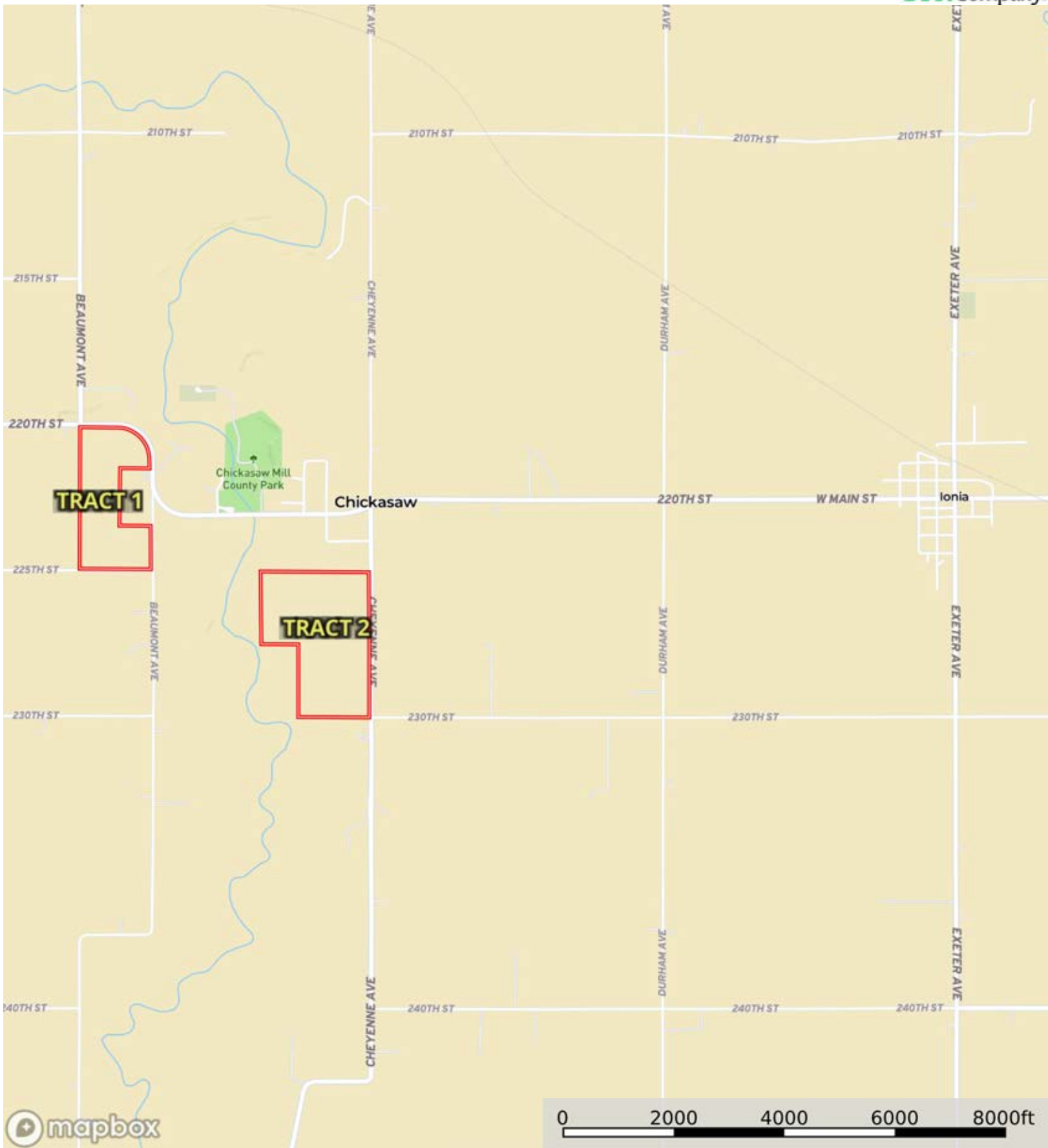


L-2400189

Chickasaw County, Iowa, 157.47 AC +/-



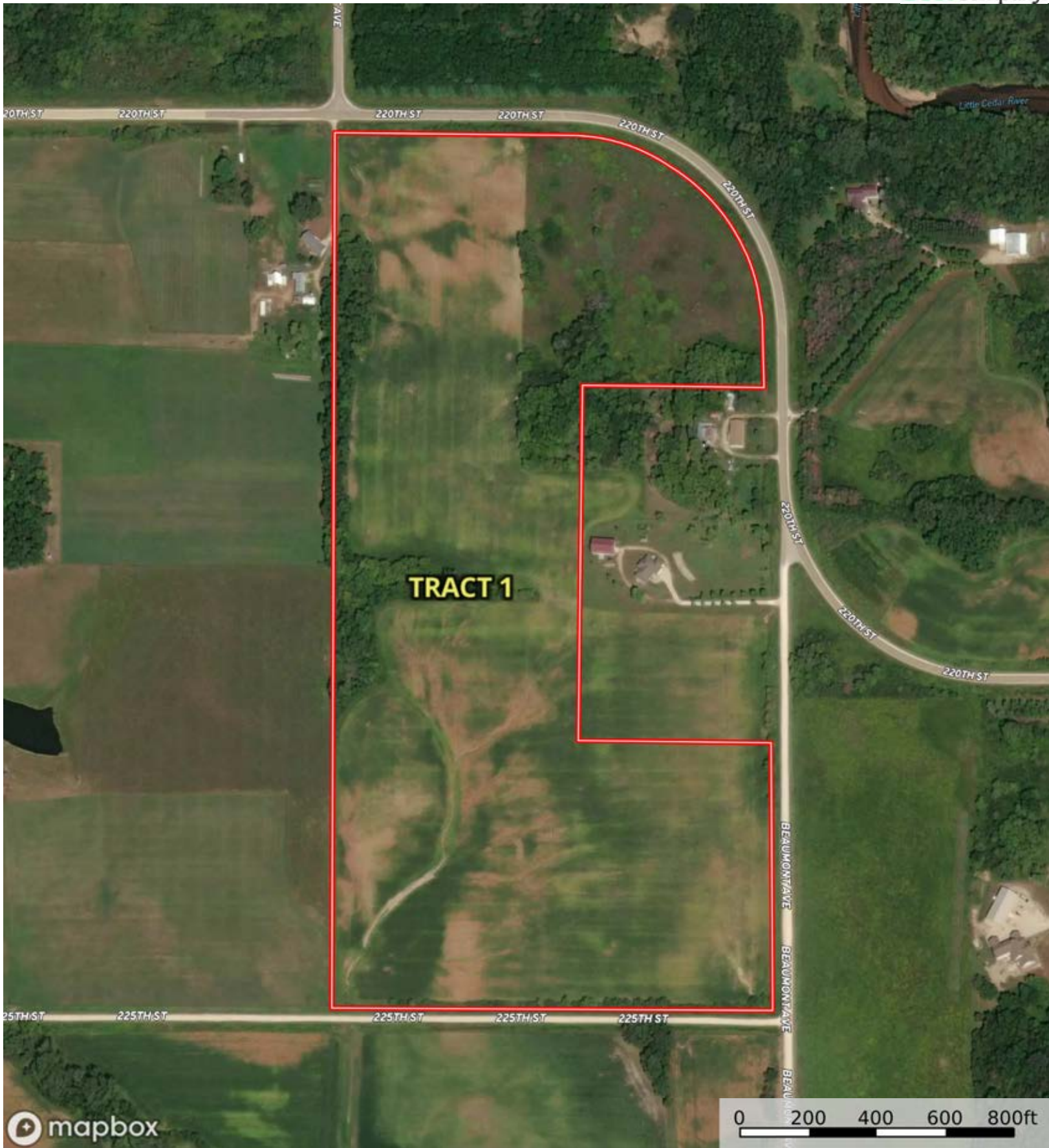
Boundary


Cris Miller
11516 Nicholas St

The information contained herein was obtained from sources deemed to be reliable. Land id™ Services makes no warranties or guarantees as to the completeness or accuracy thereof.


L-2400189

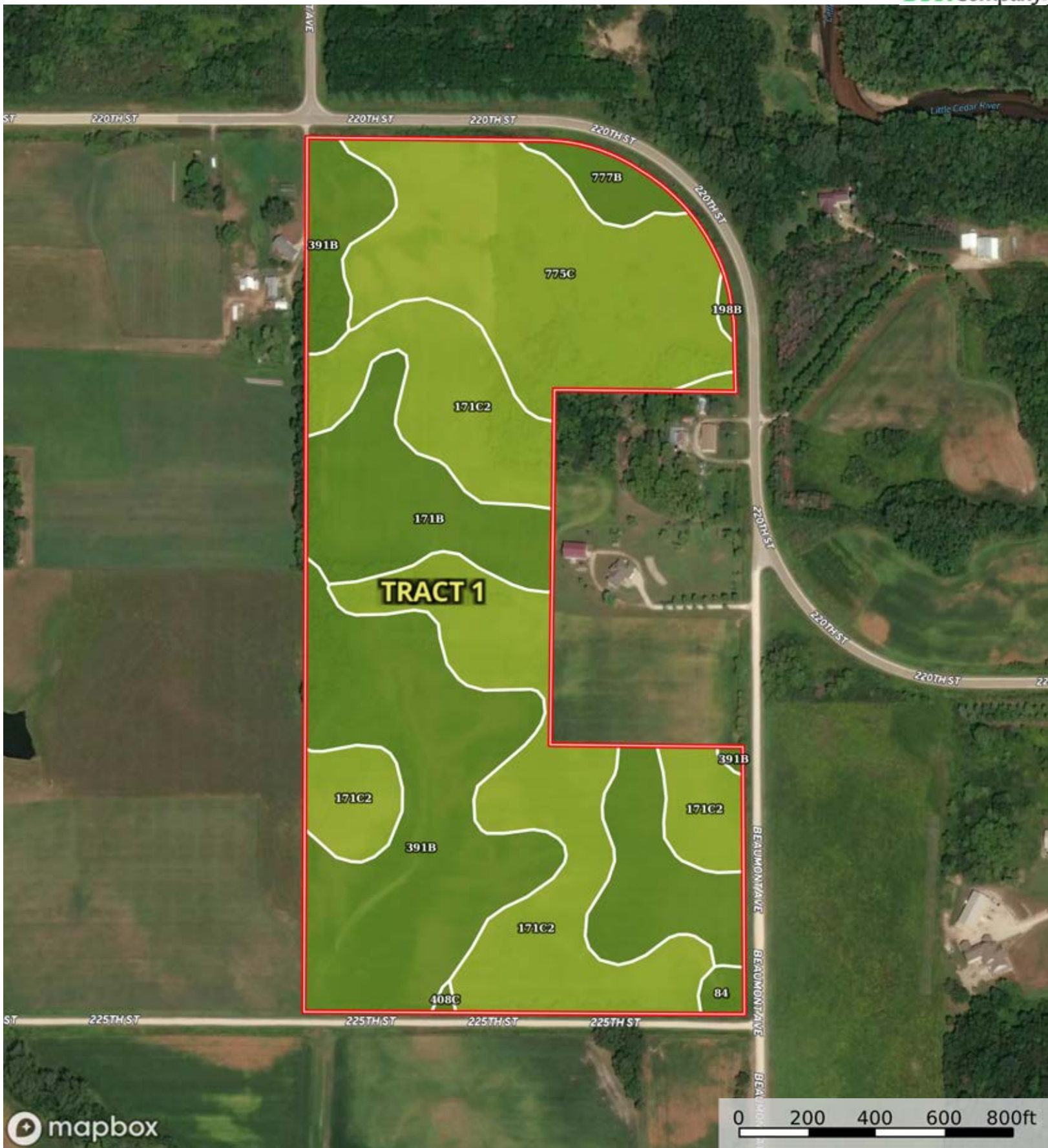
Chickasaw County, Iowa, 157.47 AC +/-



 Boundary

Cris Miller
11516 Nicholas St

 The information contained herein was obtained from sources deemed to be reliable. Land id™ Services makes no warranties or guarantees as to the completeness or accuracy thereof.



Boundary

|  Boundary 60.11 ac

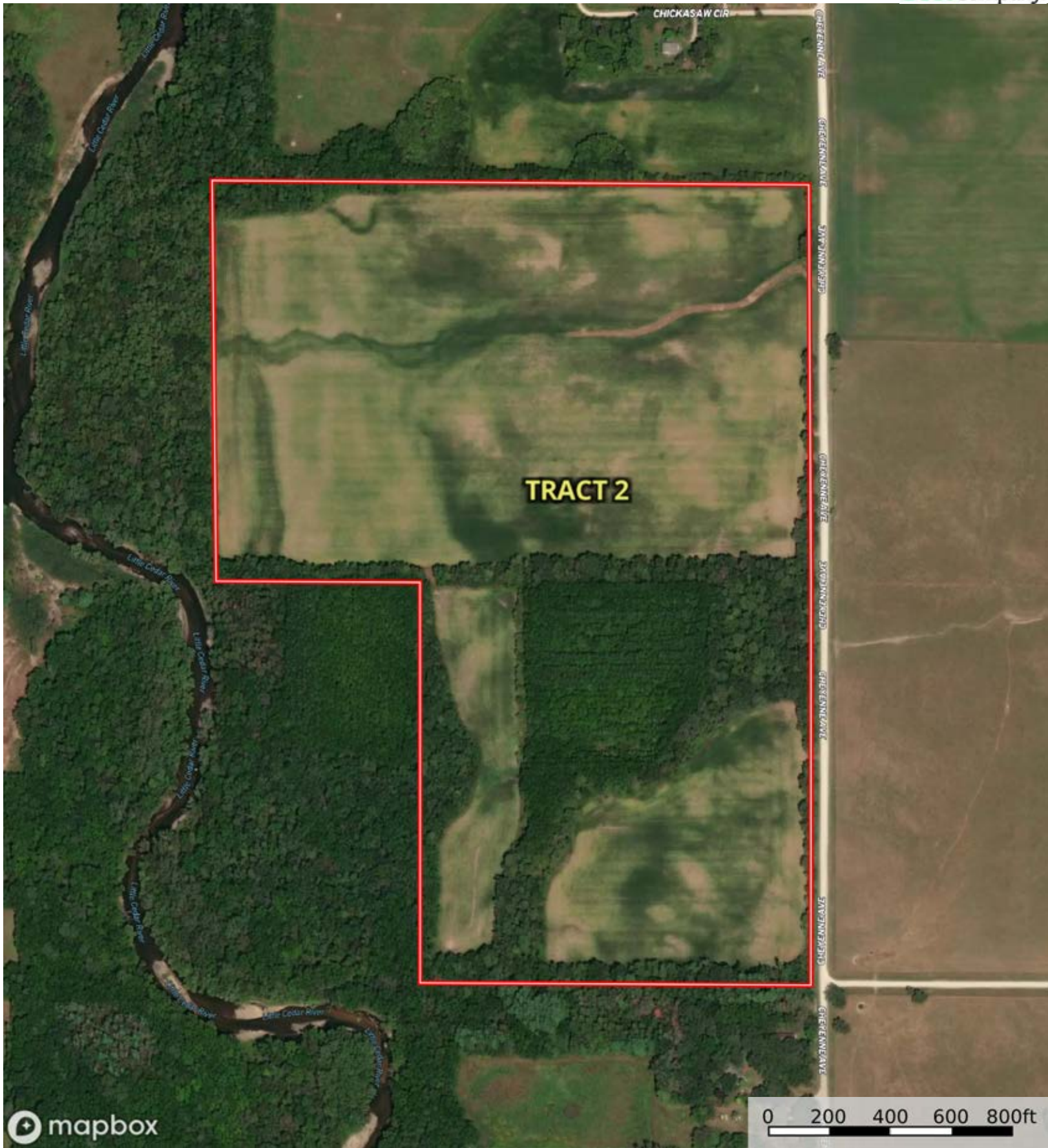
SOIL CODE	SOIL DESCRIPTION	ACRES	%	CSR2	CPI	NCCPI	CAP
171C2	Bassett loam, 5 to 9 percent slopes, eroded	19.67	32.73	77.0	0	80	3e
391B	Clyde-Floyd complex, 1 to 4 percent slopes	15.53	25.84	87.0	0	89	2w
775C	Billett sandy loam, 5 to 9 percent slopes	13.23	22.01	62.0	0	61	3e
171B	Bassett loam, 2 to 5 percent slopes	9.77	16.26	85.0	0	86	2e
777B	Wapsie loam, 2 to 5 percent slopes	1.28	2.13	50.0	0	66	2e
84	Clyde clay loam, 0 to 3 percent slopes	0.4	0.67	88.0	0	91	2w
198B	Floyd loam, 1 to 4 percent slopes	0.14	0.23	89.0	0	88	2w
408C	Olin sandy loam, 5 to 9 percent slopes	0.09	0.15	59.0	0	72	2e
TOTALS		60.11(*)	100%	77.09	-	78.91	2.55

(*) Total acres may differ in the second decimal compared to the sum of each acreage soil. This is due to a round error because we only show the acres of each soil with two decimal.



L-2400189

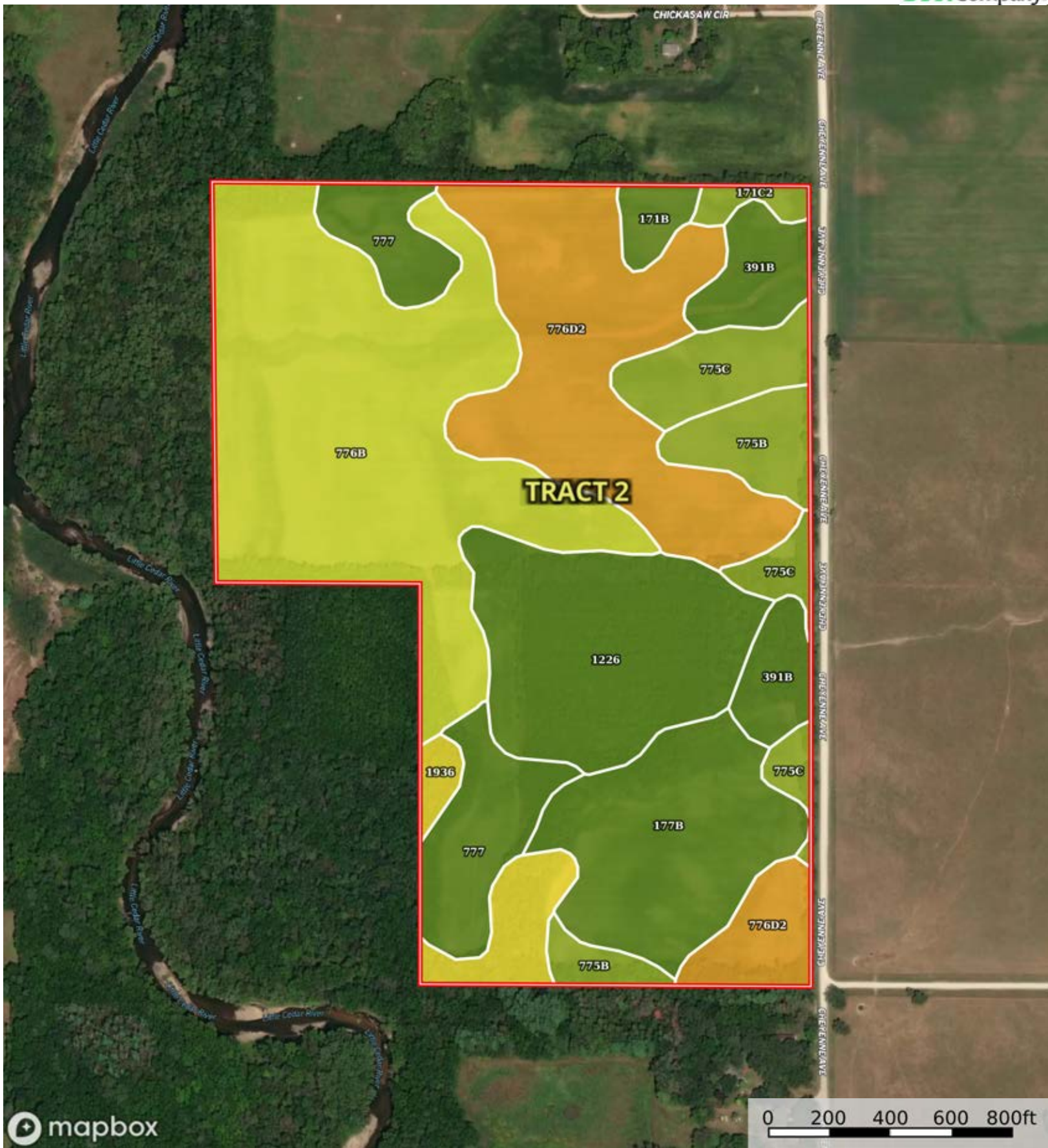
Chickasaw County, Iowa, 157.47 AC +/-



Boundary

Cris Miller
11516 Nicholas St

The information contained herein was obtained from sources deemed to be reliable. Land id™ Services makes no warranties or guarantees as to the completeness or accuracy thereof.



Boundary

|  Boundary 98.09 ac

SOIL CODE	SOIL DESCRIPTION	ACRES	%	CSR2	CPI	NCCPI	CAP
776B	Lilah sandy loam, 2 to 5 percent slopes	28.47	29.02	5.0	0	43	4s
776D2	Lilah sandy loam, 5 to 14 percent slopes, moderately eroded	18.75	19.12	5.0	0	39	6s
1226	Lawler loam, 0 to 2 percent slopes, rarely flooded	12.85	13.1	59.0	0	87	2s
177B	Saude loam, 2 to 5 percent slopes	10.81	11.02	55.0	0	77	2s
777	Wapsie loam, 0 to 2 percent slopes	7.5	7.65	55.0	0	67	2s
775C	Billett sandy loam, 5 to 9 percent slopes	5.37	5.47	62.0	0	61	3e
391B	Clyde-Floyd complex, 1 to 4 percent slopes	4.83	4.92	87.0	0	89	2w
775B	Billett sandy loam, 2 to 5 percent slopes	4.02	4.1	67.0	0	61	3s
1936	Spillville-Udifluvents complex, channeled, 0 to 2 percent slopes	3.41	3.48	25.0	0	36	5w
171B	Bassett loam, 2 to 5 percent slopes	1.24	1.26	85.0	0	86	2e
171C2	Bassett loam, 5 to 9 percent slopes, eroded	0.84	0.86	77.0	0	80	3e
TOTALS		98.09(*)	100%	33.43	-	58.19	3.55









(*) Total acres may differ in the second decimal compared to the sum of each acreage soil. This is due to a round error because we only show the acres of each soil with two decimal.

Capability Legend

Increased Limitations and Hazards

Decreased Adaptability and Freedom of Choice Users

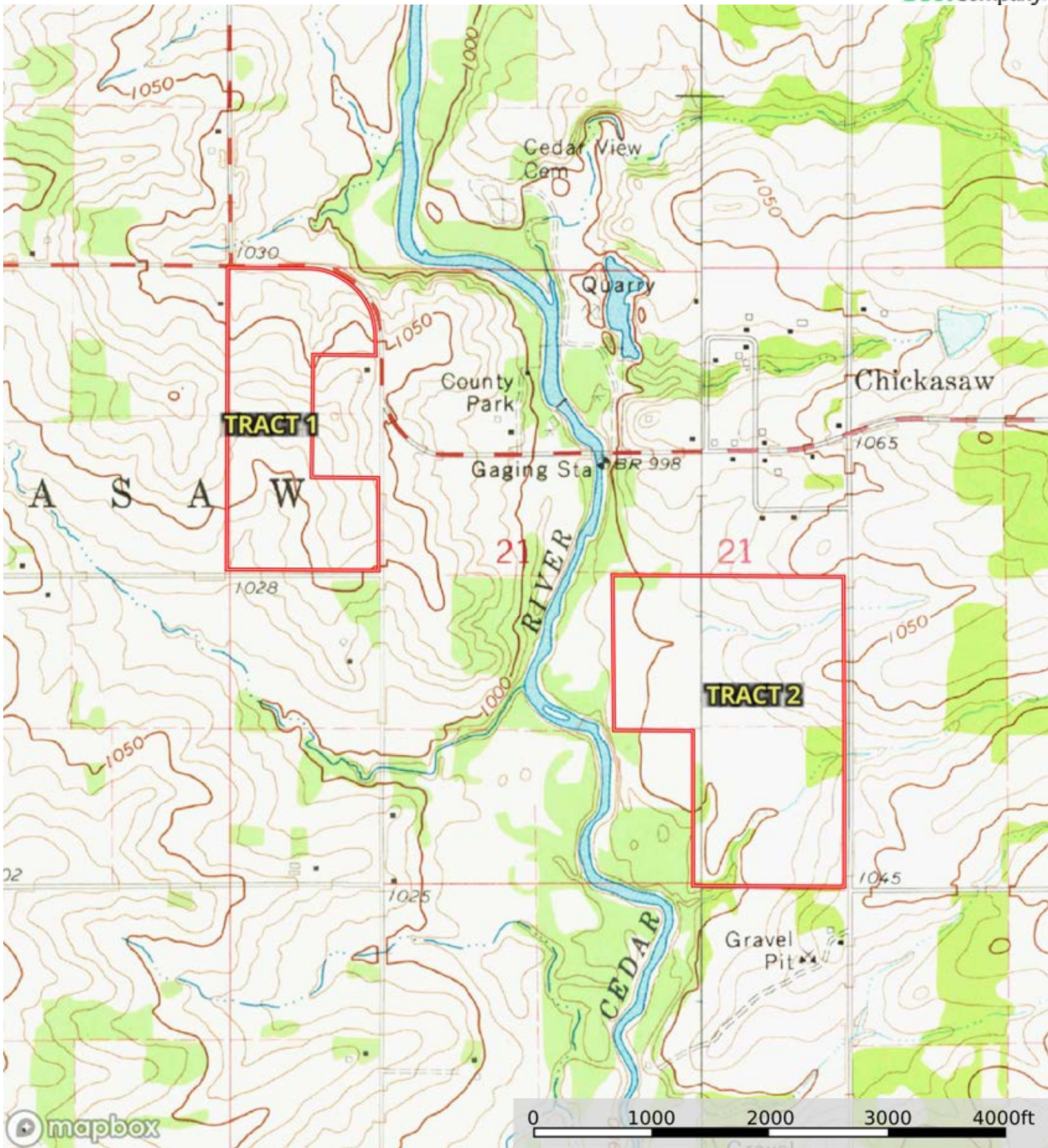
Land, Capability

								
	1	2	3	4	5	6	7	8
'Wild Life'	•	•	•	•	•	•	•	•
Forestry	•	•	•	•	•	•	•	
Limited	•	•	•	•	•	•	•	
Moderate	•	•	•	•	•	•		
Intense	•	•	•	•	•			
Limited	•	•	•	•				
Moderate	•	•	•					
Intense	•	•						
Very Intense	•							

Grazing Cultivation

(c) climatic limitations (e) susceptibility to erosion

(s) soil limitations within the rooting zone (w) excess of water



Boundary