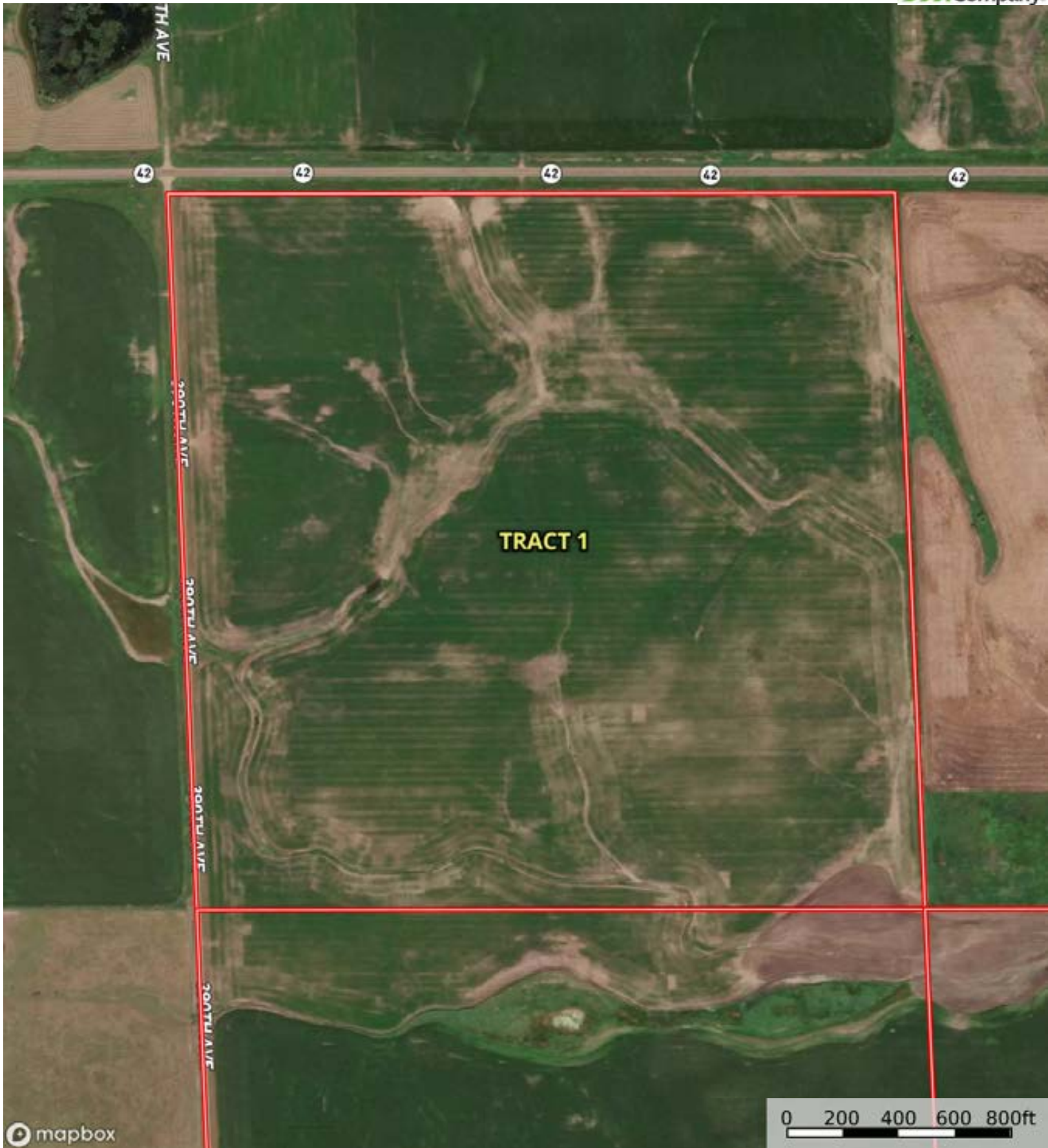

 Boundary



L-2400200

Aurora County, South Dakota, 800 AC +/-



 Boundary

L-2400200

Aurora County, South Dakota, 800 AC +/-



Boundary

|  Boundary 153.16 ac

SOIL CODE	SOIL DESCRIPTION	ACRES	%	CPI	NCCPI	CAP
HeC	Houdek-Ethan loams, 6 to 9 percent slopes	121.1 2	79.08	58	63	3e
HeB	Houdek-Ethan loams, 2 to 6 percent slopes	16.62	10.85	71	64	2e
Te	Tetonka silt loam, 0 to 1 percent slopes	11.6	7.57	57	17	4w
Bx	Bon loam, channeled, 0 to 2 percent slopes, frequently flooded	3.32	2.17	35	36	6w
Bo	Bon loam, 0 to 2 percent slopes, rarely flooded	0.5	0.33	85	75	2c
TOTALS		153.1 6(*)	100%	58.92	59.08	3.03

(\*) Total acres may differ in the second decimal compared to the sum of each acreage soil. This is due to a round error because we only show the acres of each soil with two decimal.



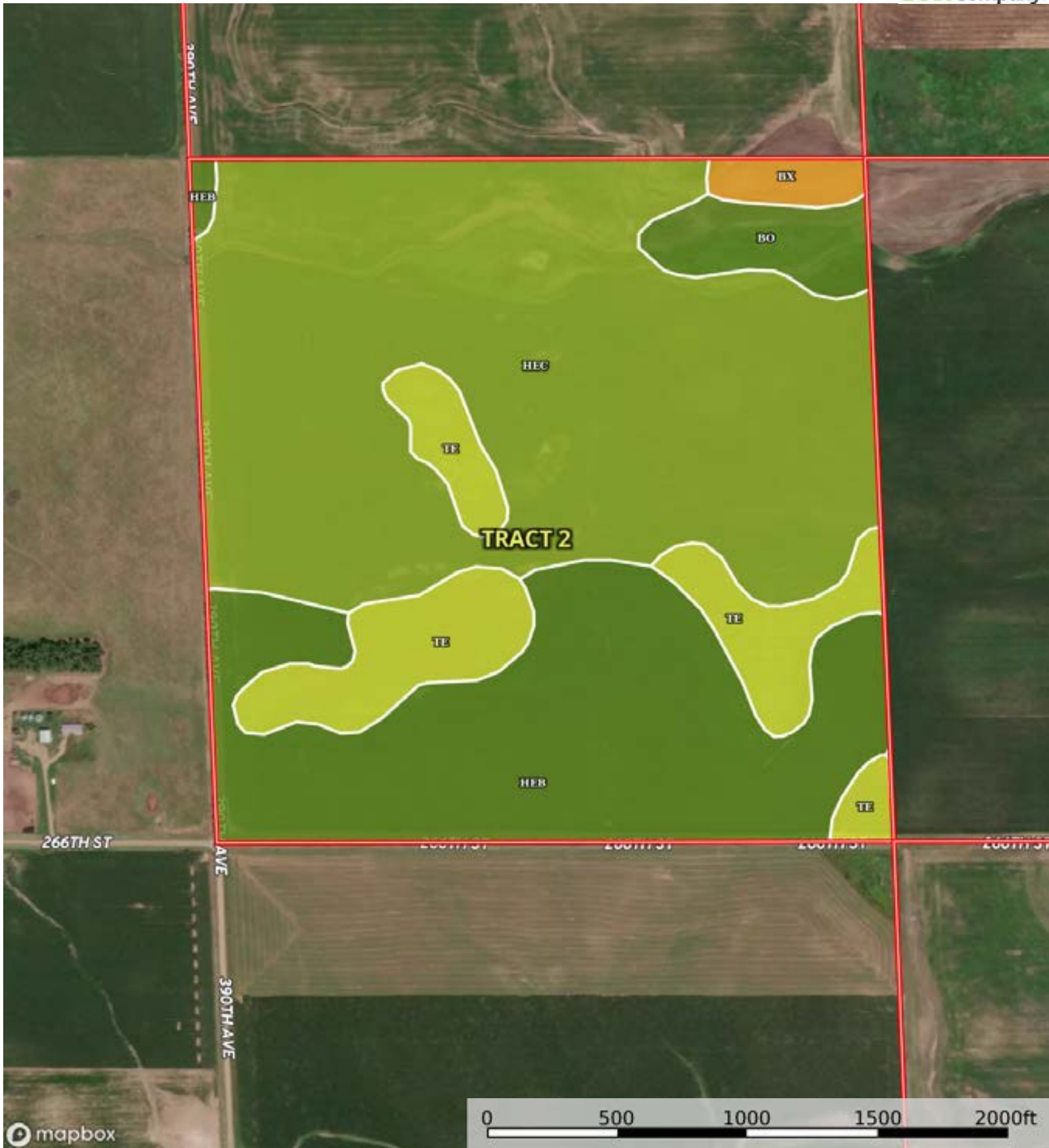



L-2400200

Aurora County, South Dakota, 800 AC +/-



 Boundary



 Boundary

|  Boundary 157.79 ac

SOIL CODE	SOIL DESCRIPTION	ACRES	%	CPI	NCCPI	CAP
HeC	Houdek-Ethan loams, 6 to 9 percent slopes	84.99	53.86	58	63	3e
HeB	Houdek-Ethan loams, 2 to 6 percent slopes	45.23	28.66	71	64	2e
Te	Tetonka silt loam, 0 to 1 percent slopes	19.42	12.31	57	17	4w
Bo	Bon loam, 0 to 2 percent slopes, rarely flooded	5.72	3.62	85	75	2c
Bx	Bon loam, channeled, 0 to 2 percent slopes, frequently flooded	2.43	1.54	35	36	6w
TOTALS		157.79(*)	100%	62.22	57.64	2.85

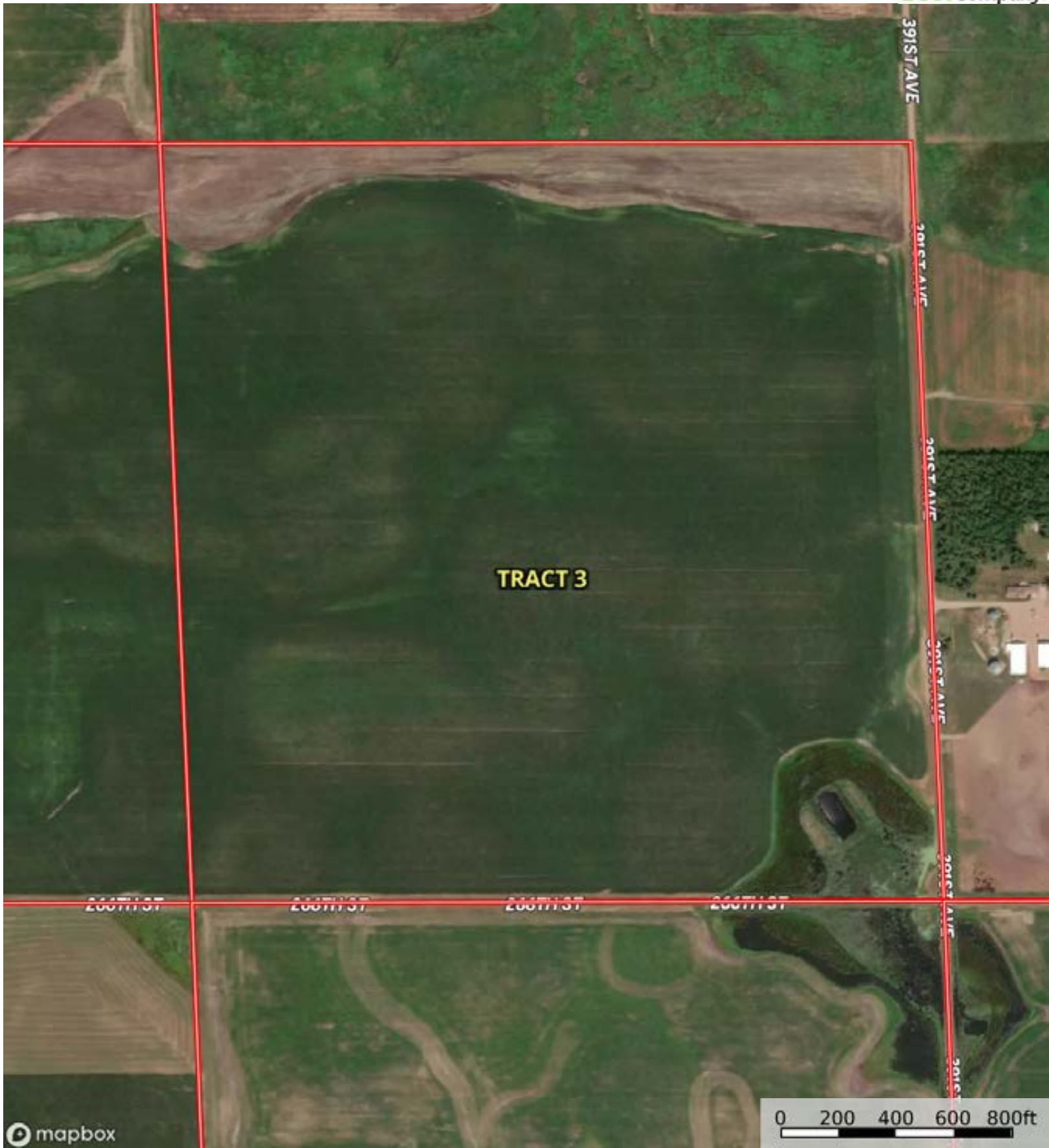
(\*) Total acres may differ in the second decimal compared to the sum of each acreage soil. This is due to a round error because we only show the acres of each soil with two decimal.




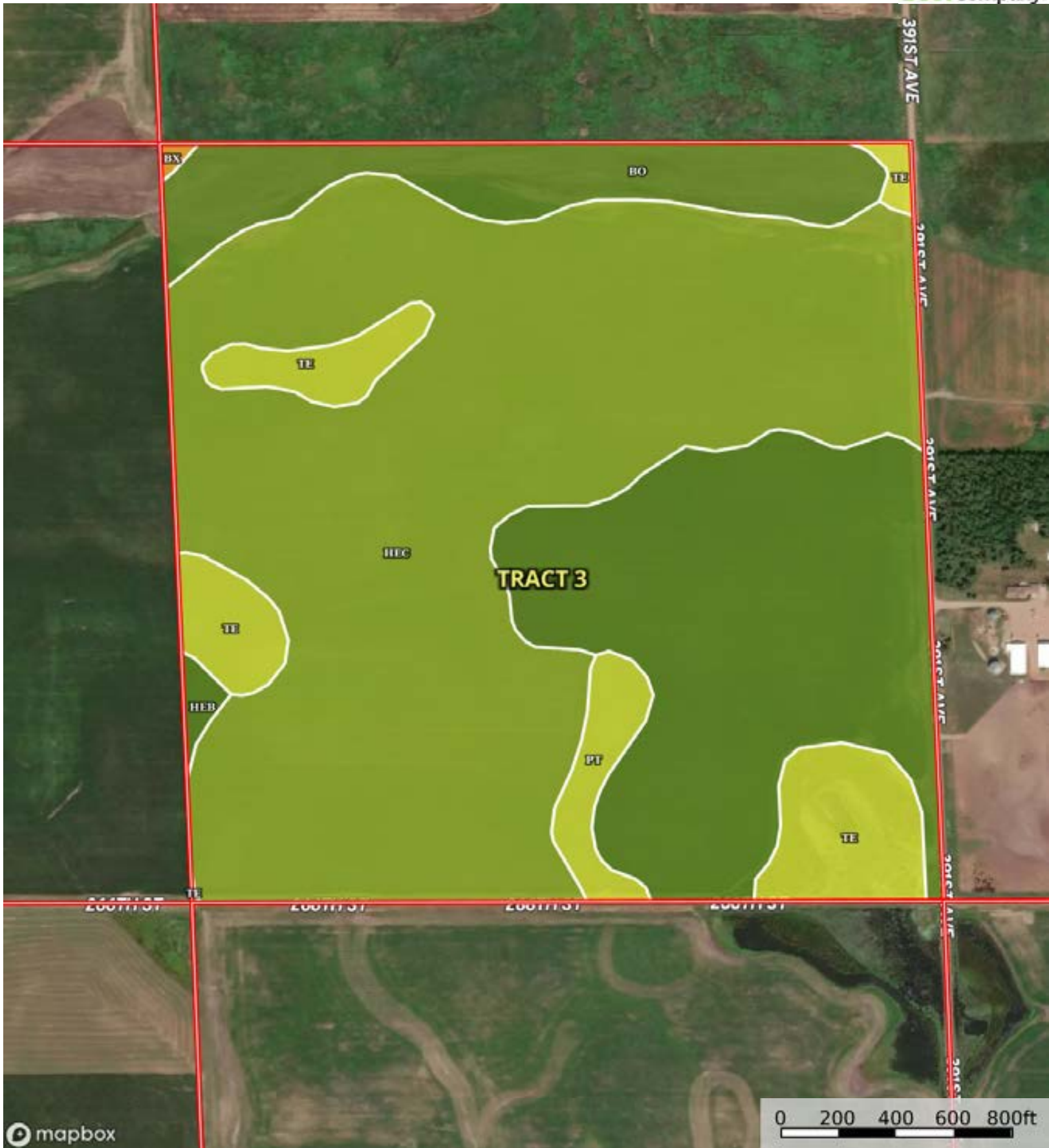



L-2400200

Aurora County, South Dakota, 800 AC +/-



 Boundary



 Boundary

|  Boundary 157.76 ac

SOIL CODE	SOIL DESCRIPTION	ACRES	%	CPI	NCCPI	CAP
HeC	Houdek-Ethan loams, 6 to 9 percent slopes	89.33	56.62	58	63	3e
HeB	Houdek-Ethan loams, 2 to 6 percent slopes	38.57	24.45	71	64	2e
Bo	Bon loam, 0 to 2 percent slopes, rarely flooded	13.6	8.62	85	75	2c
Te	Tetonka silt loam, 0 to 1 percent slopes	12.73	8.07	57	17	4w
Pt	Plankinton-Prosper complex	3.31	2.1	68	29	4w
Bx	Bon loam, channeled, 0 to 2 percent slopes, frequently flooded	0.22	0.14	35	36	6w
TOTALS		157.76(*)	100%	63.6	59.81	2.78

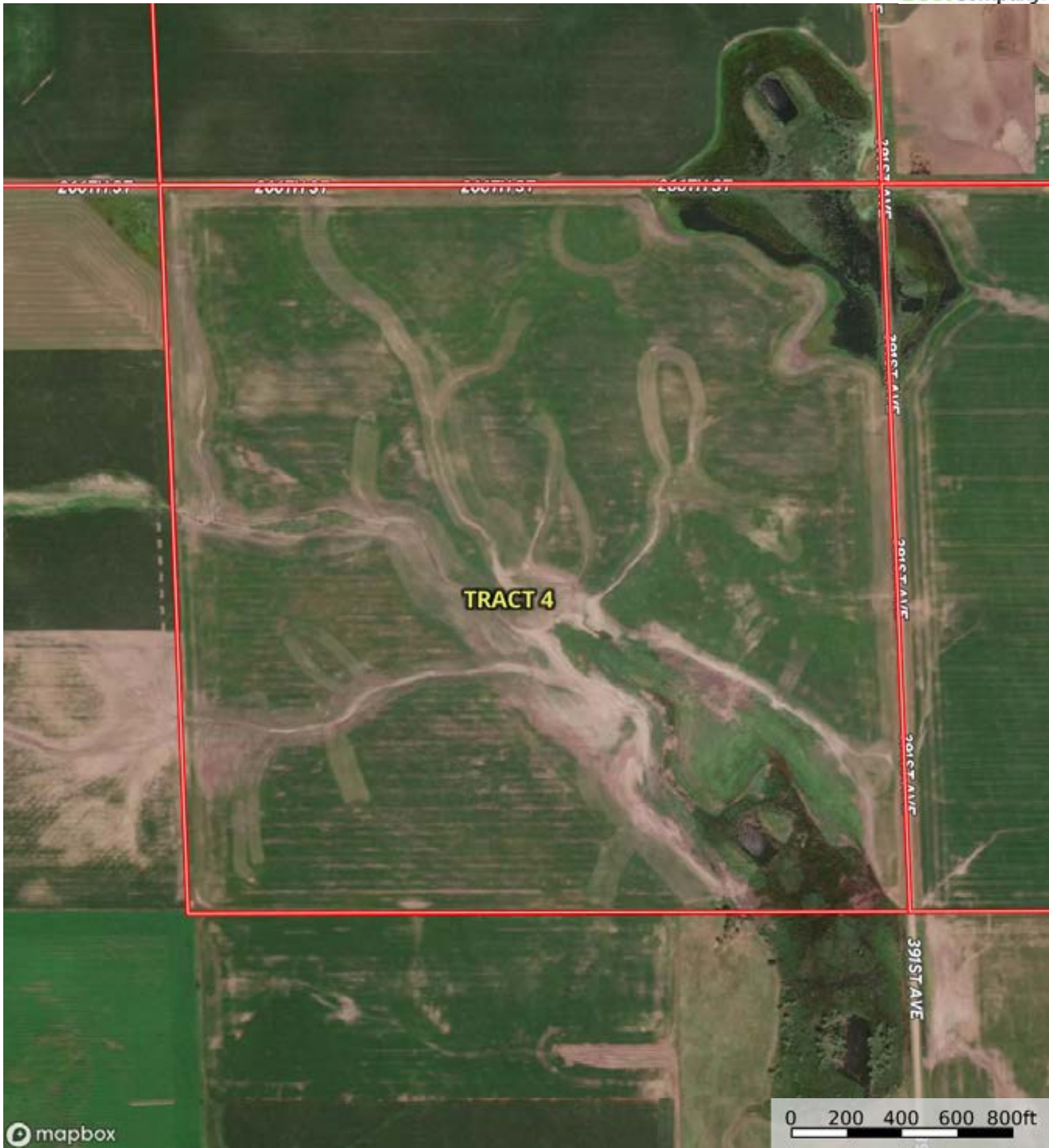
(\*) Total acres may differ in the second decimal compared to the sum of each acreage soil. This is due to a round error because we only show the acres of each soil with two decimal.







L-2400200

Aurora County, South Dakota, 800 AC +/-



 Boundary



 Boundary



|  Boundary 157.97 ac

SOIL CODE	SOIL DESCRIPTION	ACRES	%	CPI	NCCPI	CAP
HeC	Houdek-Ethan loams, 6 to 9 percent slopes	77.97	49.36	58	63	3e
HeB	Houdek-Ethan loams, 2 to 6 percent slopes	41.53	26.29	71	64	2e
Te	Tetonka silt loam, 0 to 1 percent slopes	30.39	19.24	57	17	4w
Pt	Plankinton-Prosper complex	5.37	3.4	68	29	4w
HpA	Houdek-Prosper loams, 0 to 2 percent slopes	2.04	1.29	88	67	2c
Wp	Worthing silty clay loam, ponded, 0 to 1 percent slopes	0.67	0.42	10	4	8w
TOTALS		157.97(*)	100%	61.75	53.06	2.97

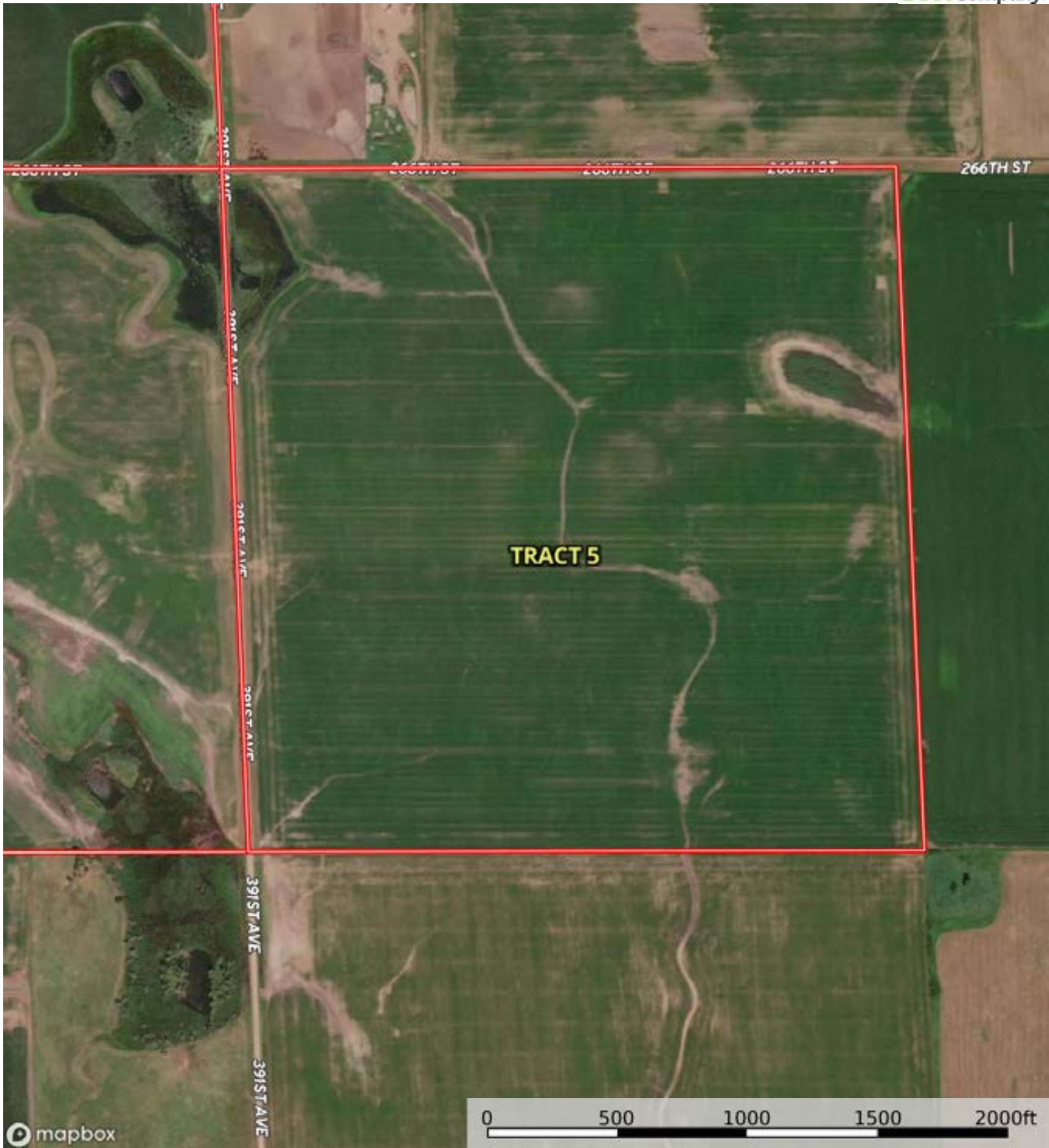
(\*) Total acres may differ in the second decimal compared to the sum of each acreage soil. This is due to a round error because we only show the acres of each soil with two decimal.






L-2400200

Aurora County, South Dakota, 800 AC +/-



Boundary



 Boundary



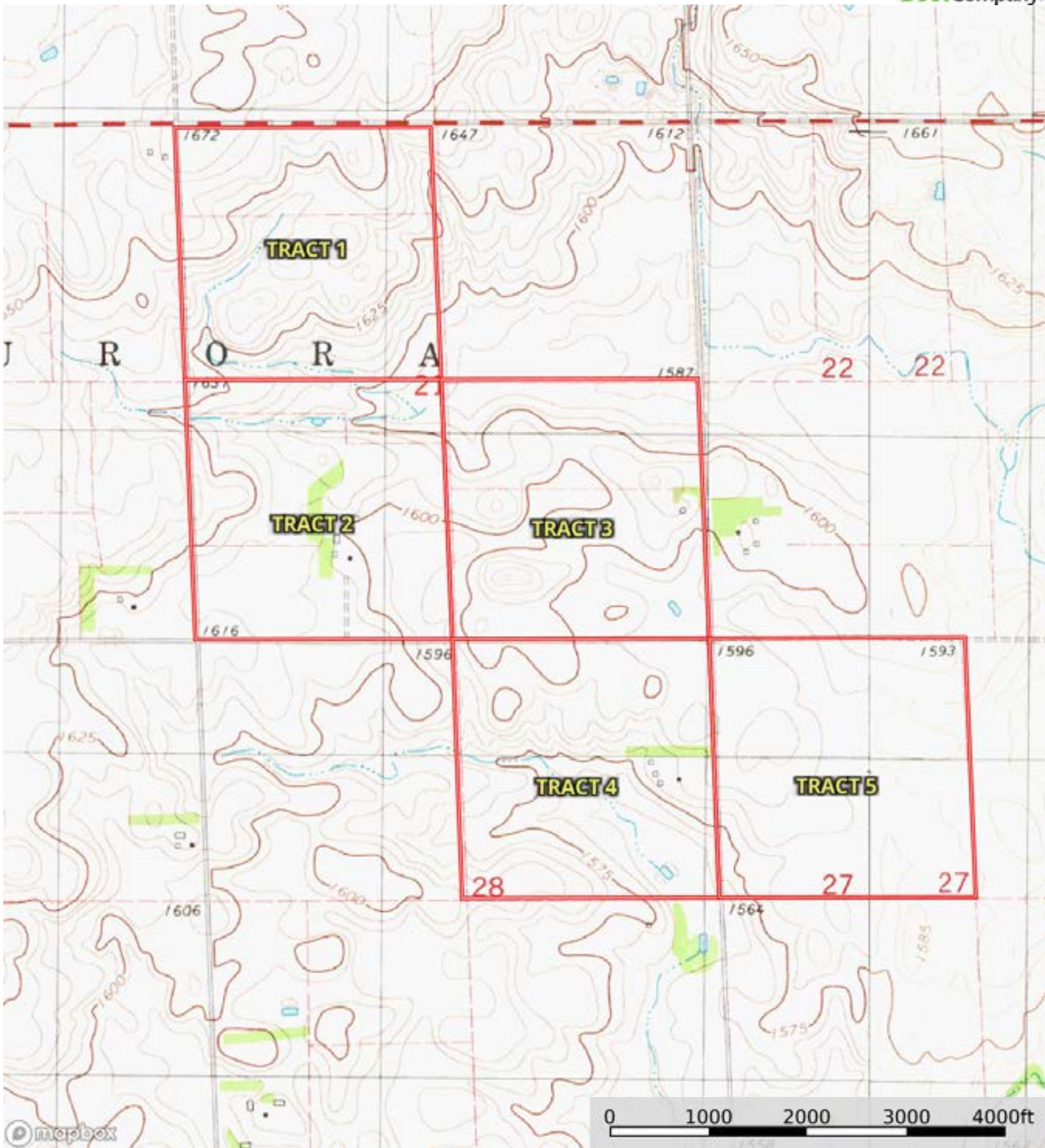
|  Boundary 157.47 ac


SOIL CODE	SOIL DESCRIPTION	ACRES	%	CPI	NCCPI	CAP
HeB	Houdek-Ethan loams, 2 to 6 percent slopes	65.21	41.41	71	64	2e
HpA	Houdek-Prosper loams, 0 to 2 percent slopes	51.11	32.46	88	67	2c
HeC	Houdek-Ethan loams, 6 to 9 percent slopes	17.47	11.09	58	63	3e
Pt	Plankinton-Prosper complex	11.88	7.54	68	29	4w
Te	Tetonka silt loam, 0 to 1 percent slopes	11.8	7.49	57	17	4w
TOTALS		157.47(*)	100%	73.8	58.7	2.41

(\*) Total acres may differ in the second decimal compared to the sum of each acreage soil. This is due to a round error because we only show the acres of each soil with two decimal.







 Boundary