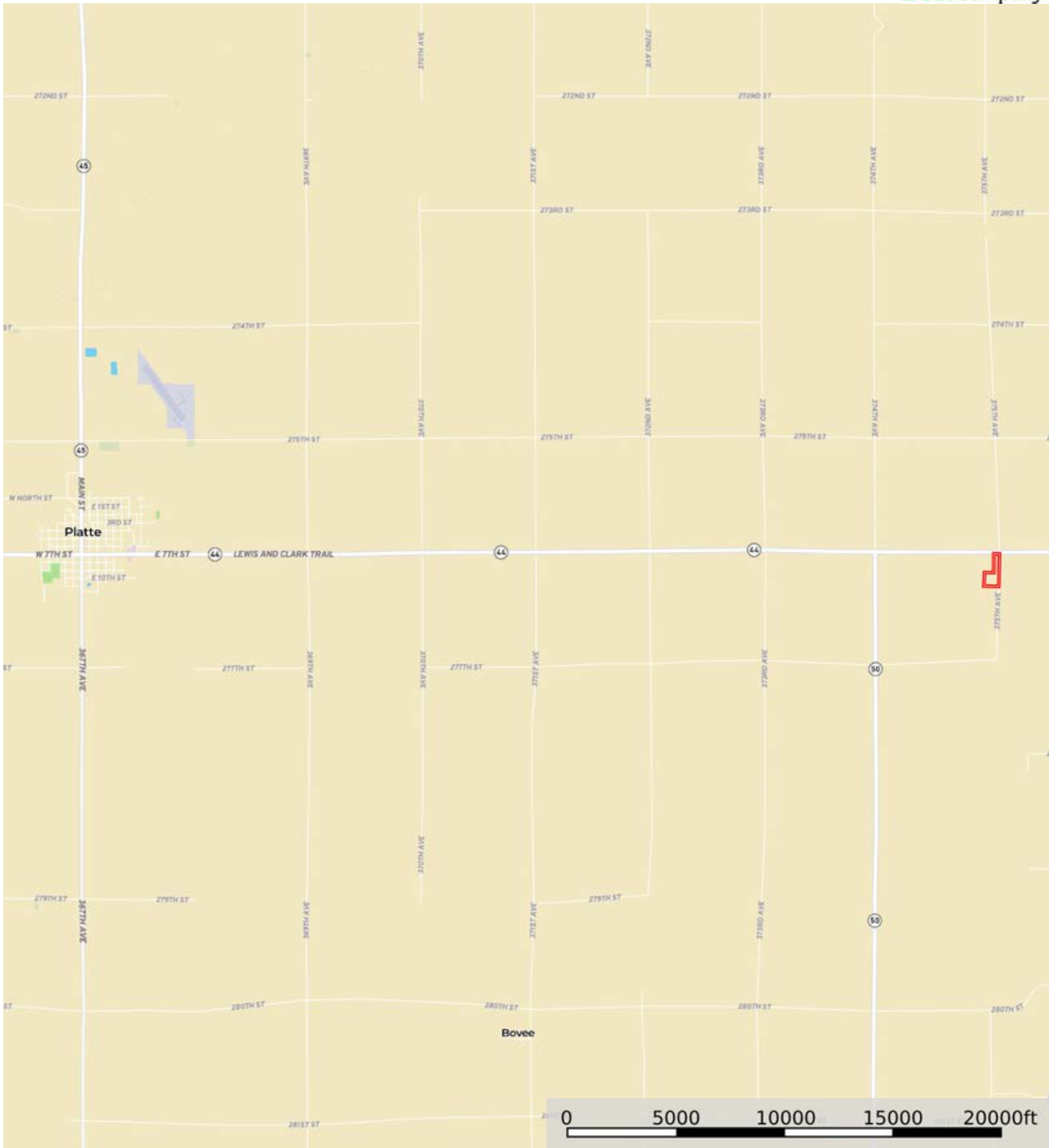


L-2400213

Douglas County, South Dakota, 14.75 AC +/-



Boundary


Cris Miller  
11516 Nicholas St

The information contained herein was obtained from sources deemed to be reliable. Land id™ Services makes no warranties or guarantees as to the completeness or accuracy thereof.


L-2400213

Douglas County, South Dakota, 14.75 AC +/-



 Boundary

Cris Miller  
11516 Nicholas St


 The information contained herein was obtained from sources deemed to be reliable. Land id™ Services makes no warranties or guarantees as to the completeness or accuracy thereof.




L-2400213

Douglas County, South Dakota, 14.75 AC +/-



 Boundary

Cris Miller  
11516 Nicholas St

 The information contained herein was obtained from sources deemed to be reliable. Land id™ Services makes no warranties or guarantees as to the completeness or accuracy thereof.

|  Boundary 14.74 ac

| SOIL CODE | SOIL DESCRIPTION                                 | ACRES    | %     | CPI   | NCCPI | CAP  |
|-----------|--|----------|-------|-------|-------|------|
| HgA       | Highmore-Walke silt loams, 0 to 2 percent slopes | 13.99    | 94.85 | 86    | 64    | 2c   |
| Hv        | Hoven silt loam, 0 to 1 percent slopes           | 0.52     | 3.53  | 15    | 7     | 6s   |
| EaB       | Eakin-Ethan complex, 2 to 6 percent slopes       | 0.23     | 1.56  | 76    | 64    | 2e   |
| TOTALS    |  | 14.74(*) | 100%  | 83.28 | 61.95 | 2.14 |

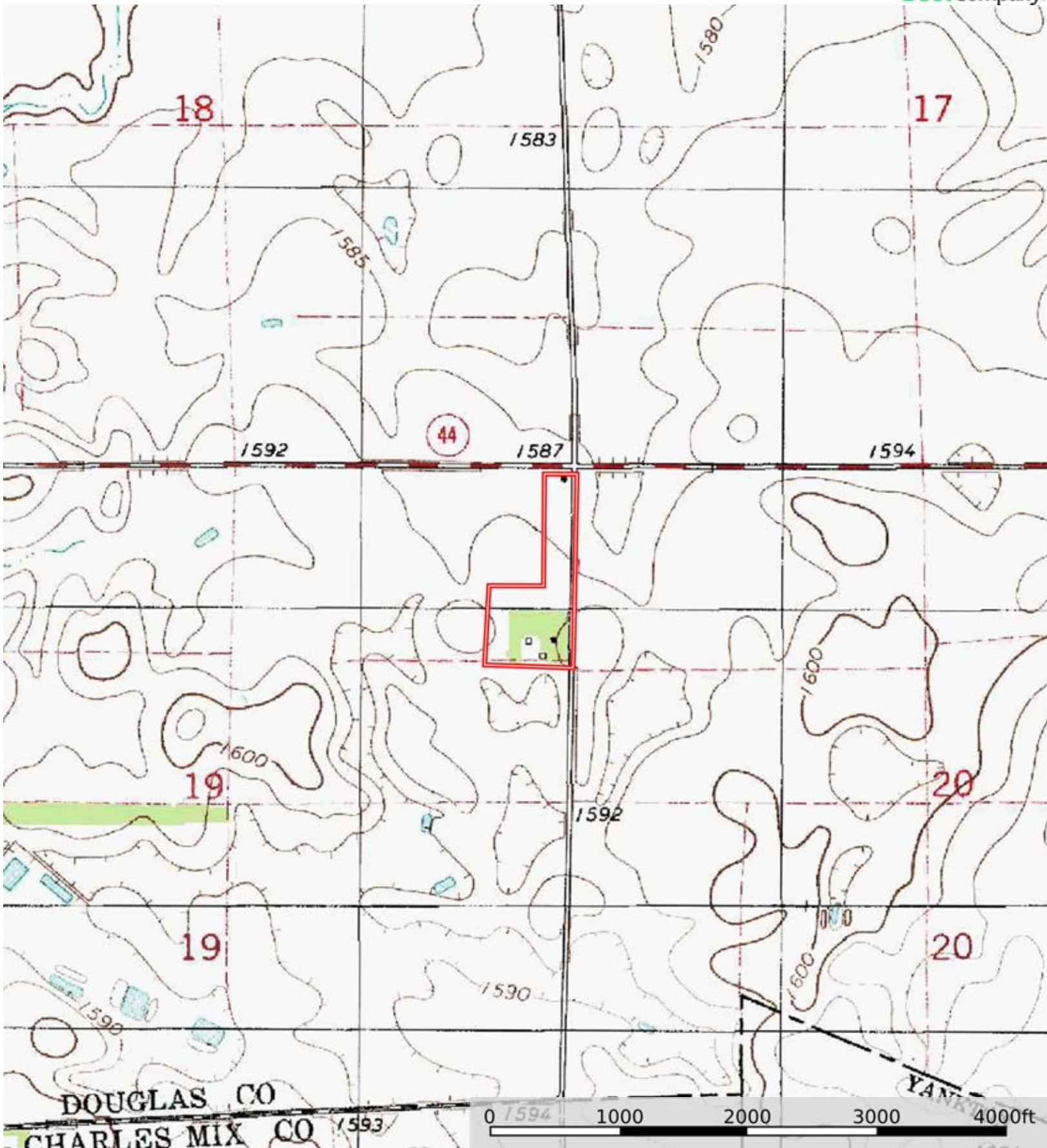
(\*) Total acres may differ in the second decimal compared to the sum of each acreage soil. This is due to a round error because we only show the acres of each soil with two decimal.





L-2400213

Douglas County, South Dakota, 14.75 AC +/-



Boundary

Cris Miller  
11516 Nicholas St

The information contained herein was obtained from sources deemed to be reliable. Land id™ Services makes no warranties or guarantees as to the completeness or accuracy thereof.