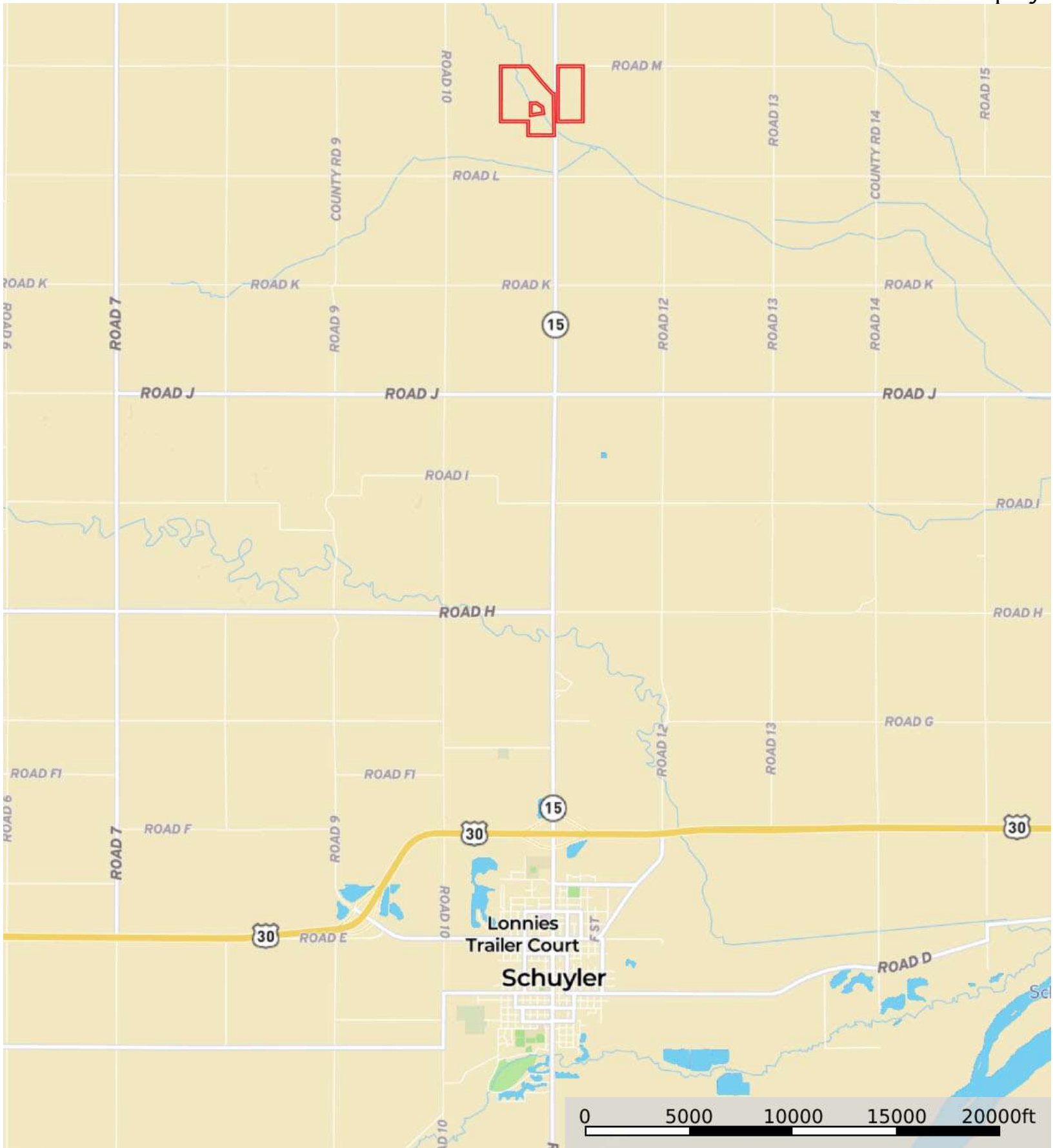
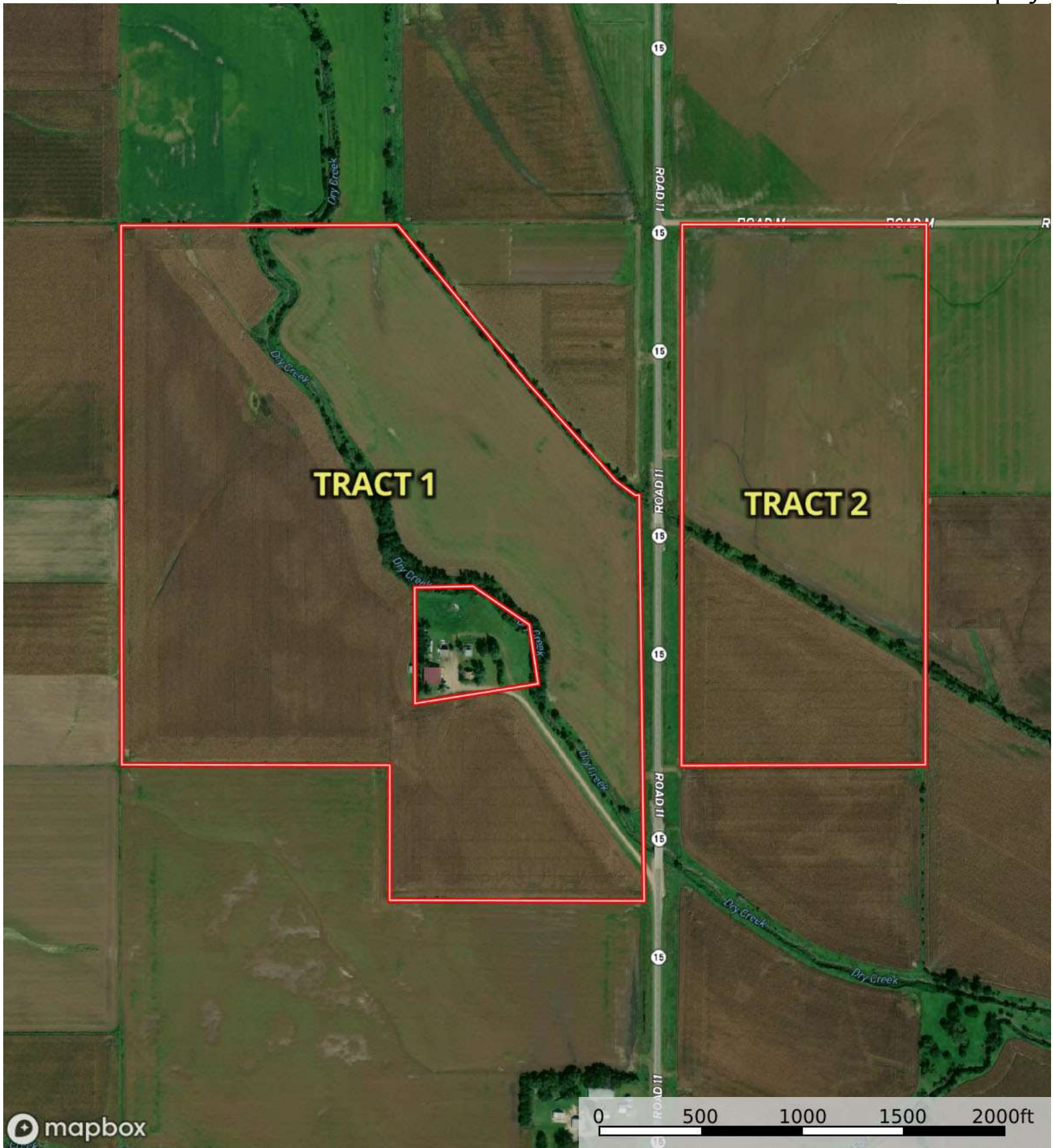


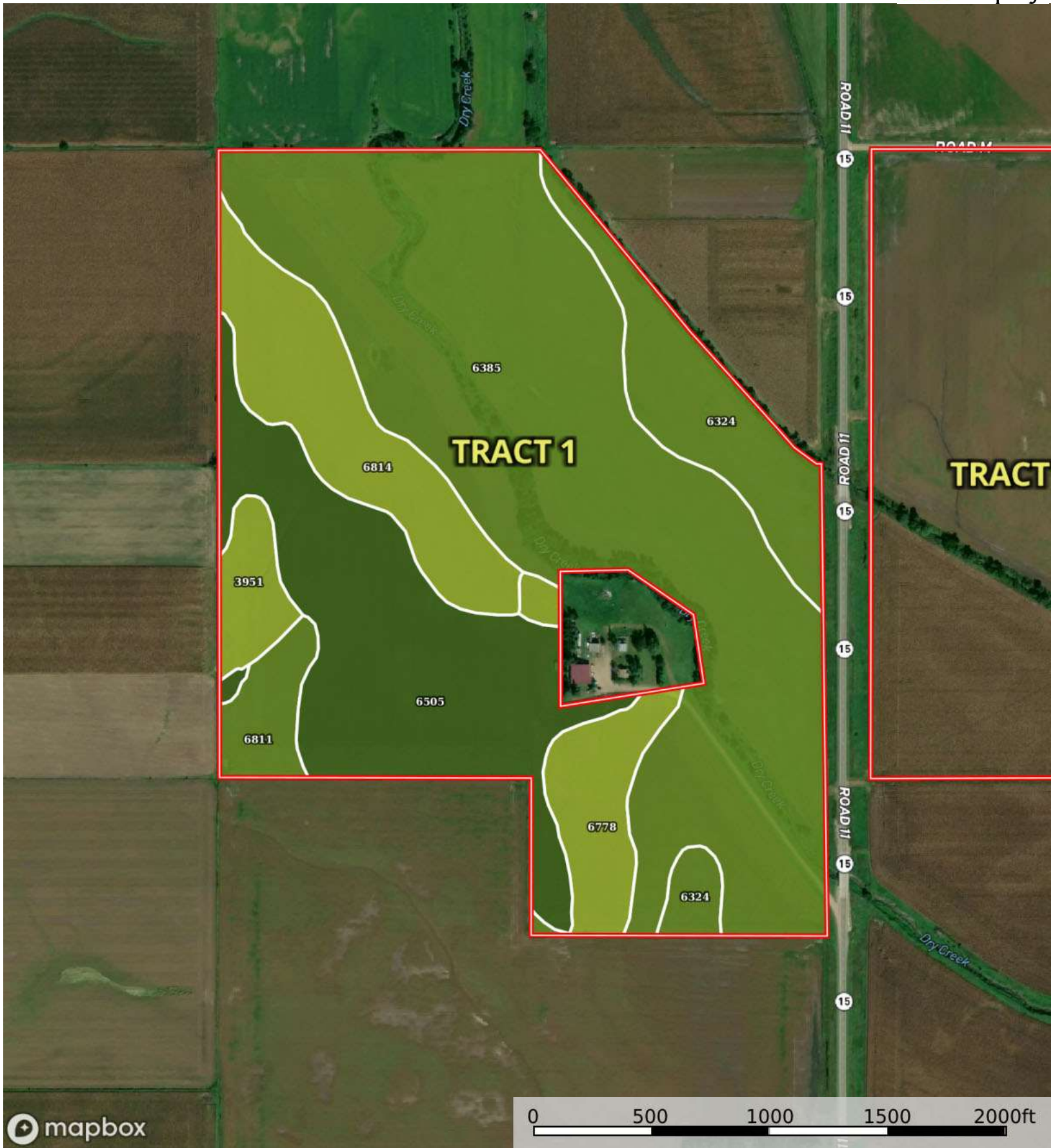
L-2400219

Colfax County, Nebraska, 220.88 AC +/-



 Boundary





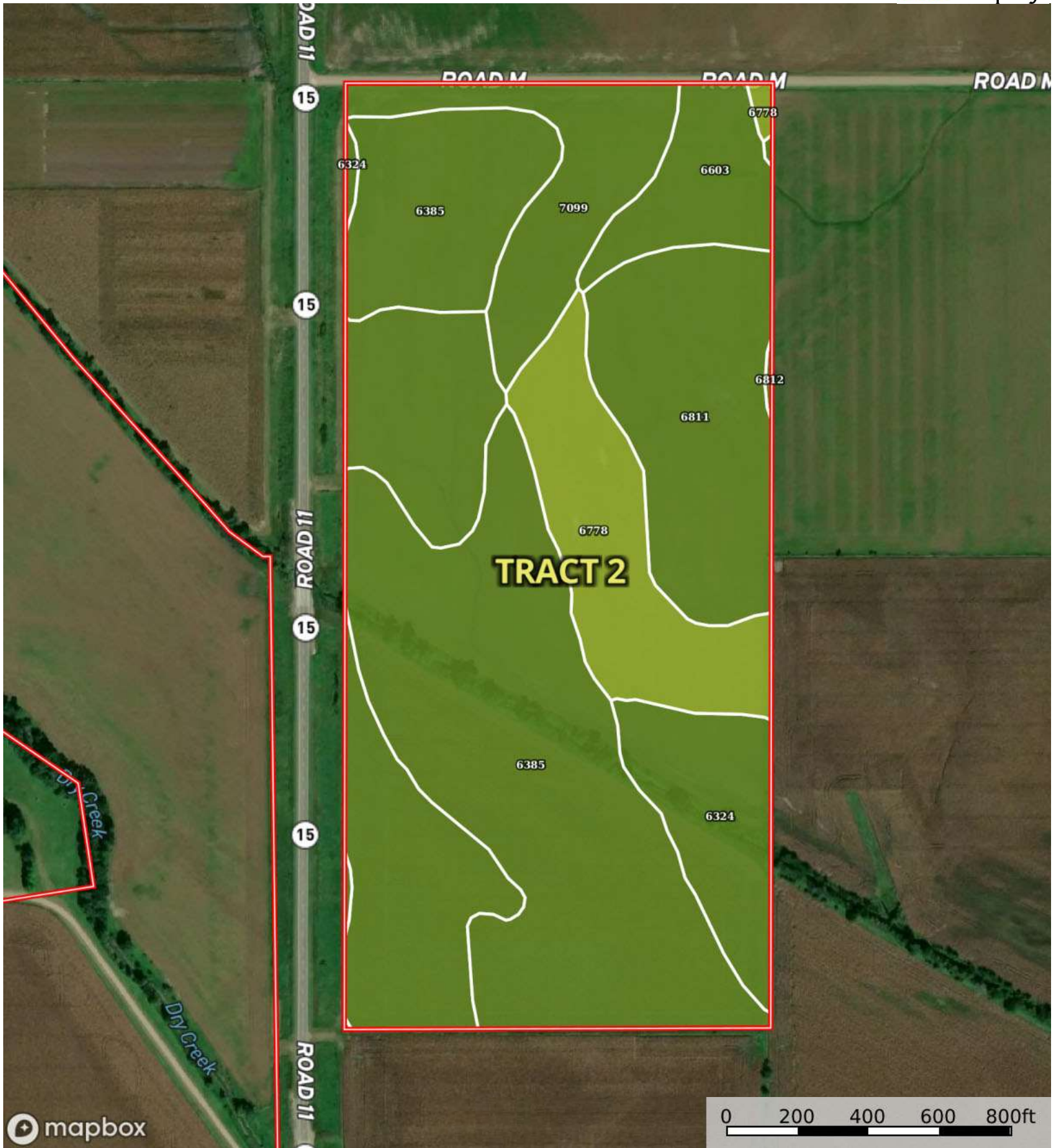
 Boundary

Boundary 149.87 ac

SOIL CODE	SOIL DESCRIPTION	ACRES	%	CPI	NCCPI	CAP
6385	Shell silt loam, occasionally flooded	73.9	49.31	0	79	2w
6505	Belfore silty clay loam, terrace, 0 to 2 percent slopes	30.13	20.11	0	81	1
6814	Moody silty clay loam, 6 to 11 percent slopes, eroded	15.39	10.27	0	63	3e
6324	Coleridge silty clay loam, 0 to 2 percent slopes, occasionally flooded	14.09	9.4	0	82	2w
6778	Nora-Crofton complex, 6 to 11 percent slopes, eroded	8.09	5.4	0	66	3e
6811	Moody silty clay loam, 2 to 6 percent slopes	4.38	2.92	67	75	2e
3951	Fillmore silt loam, occasionally ponded	3.89	2.6	0	66	3w
TOTALS		149.87(*)	100%	1.96	76.89	1.98

(*) Total acres may differ in the second decimal compared to the sum of each acreage soil. This is due to a round error because we only show the acres of each soil with two decimal.



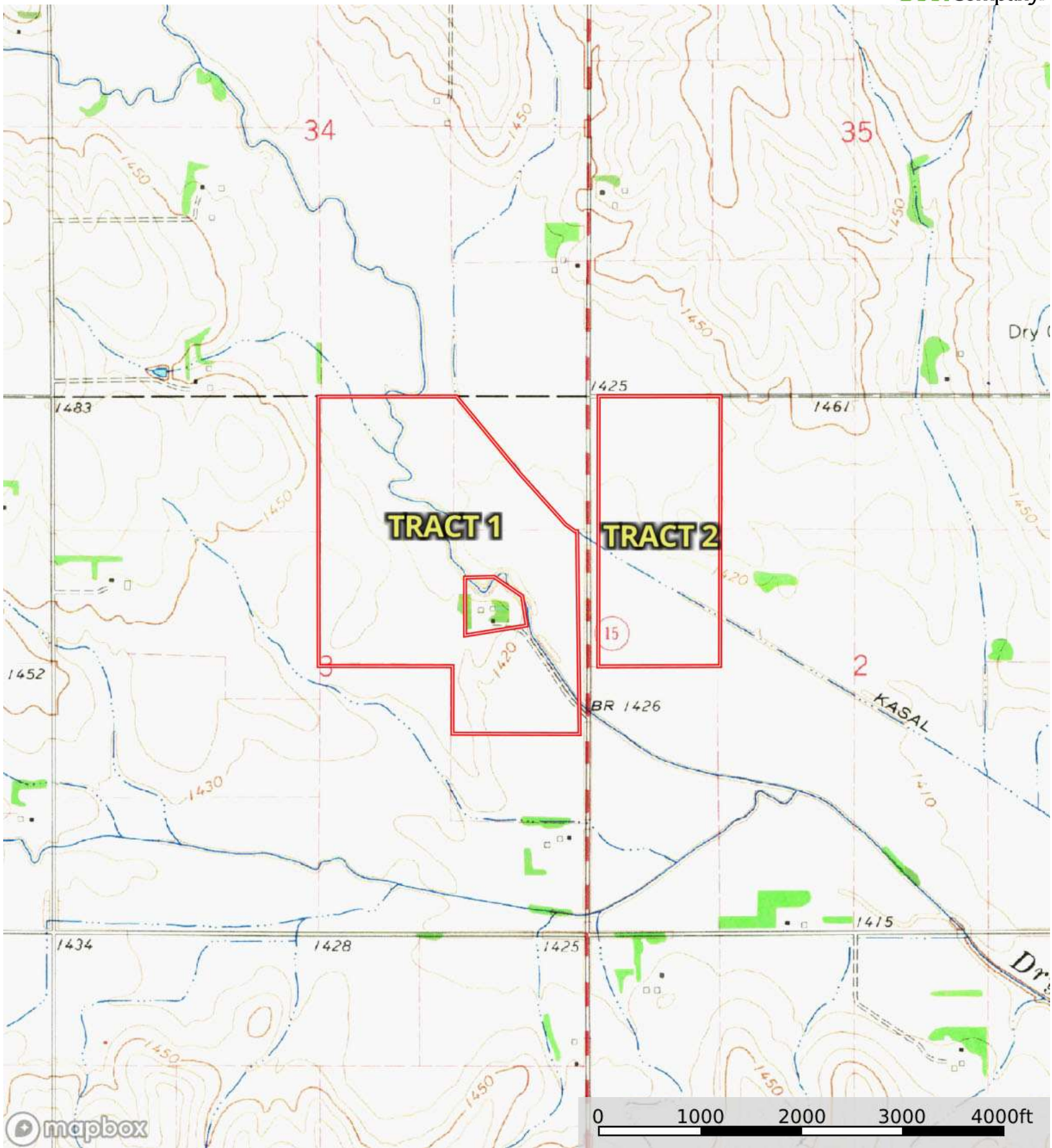


Boundary 73.73 ac

SOIL CODE	SOIL DESCRIPTION	ACRES	%	CPI	NCCPI	CAP
6385	Shell silt loam, occasionally flooded	28.64	38.84	0	79	2w
6324	Coleridge silty clay loam, 0 to 2 percent slopes, occasionally flooded	17.24	23.38	0	82	2w
6811	Moody silty clay loam, 2 to 6 percent slopes	9.99	13.55	67	75	2e
6778	Nora-Crofton complex, 6 to 11 percent slopes, eroded	8.08	10.96	0	66	3e
7099	Zook silty clay loam, 0 to 2 percent slopes, occasionally flooded	5.93	8.04	0	67	2w
6603	Alcester silty clay loam, 2 to 6 percent slopes	3.74	5.07	91	76	2e
6812	Moody silty clay loam, 2 to 6 percent slopes, eroded	0.11	0.15	0	64	2e
TOTALS		73.73(*)	100%	13.69	76.58	2.11

(*) Total acres may differ in the second decimal compared to the sum of each acreage soil. This is due to a round error because we only show the acres of each soil with two decimal.





 Boundary