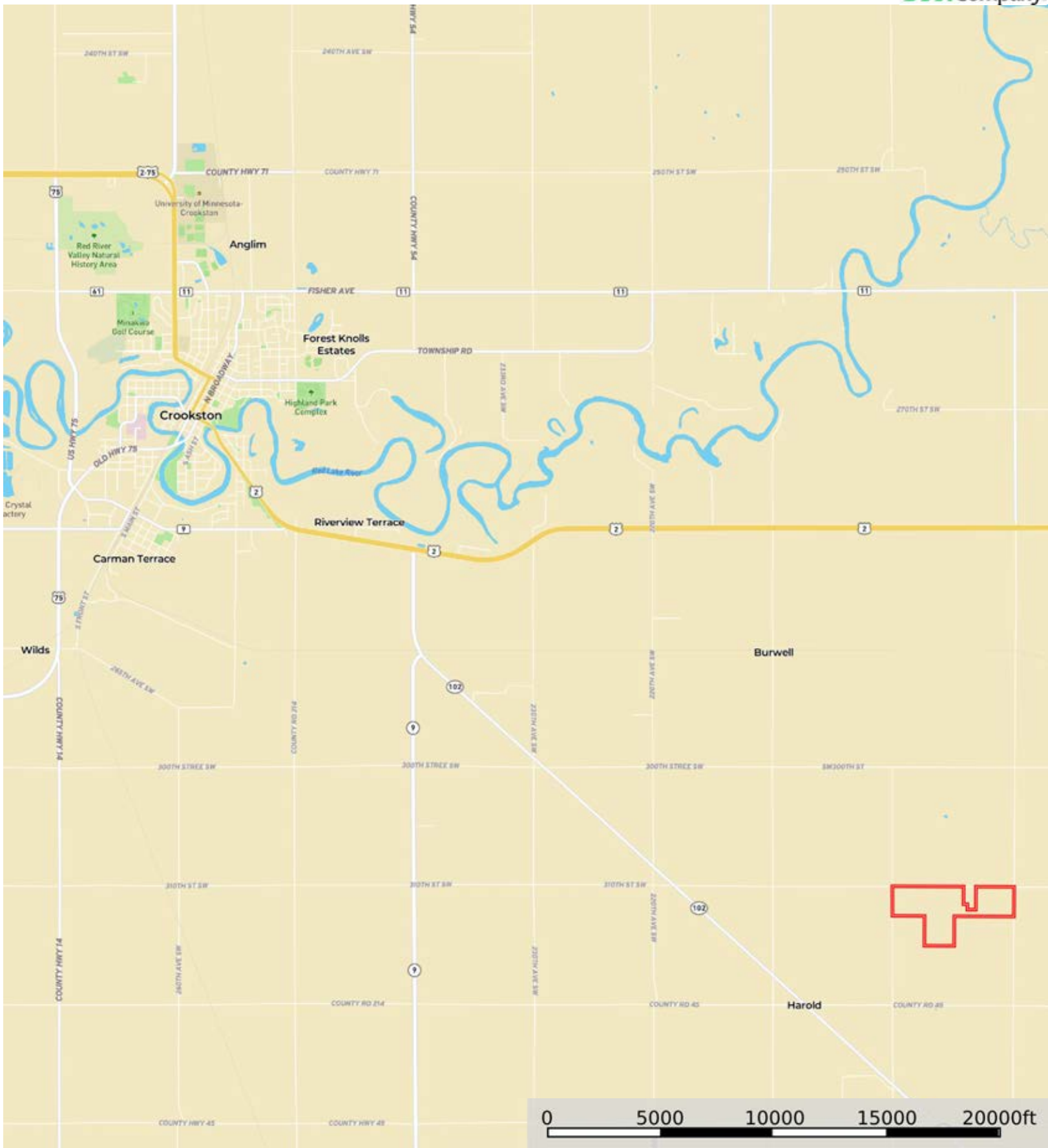


L-2400223

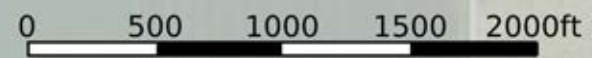
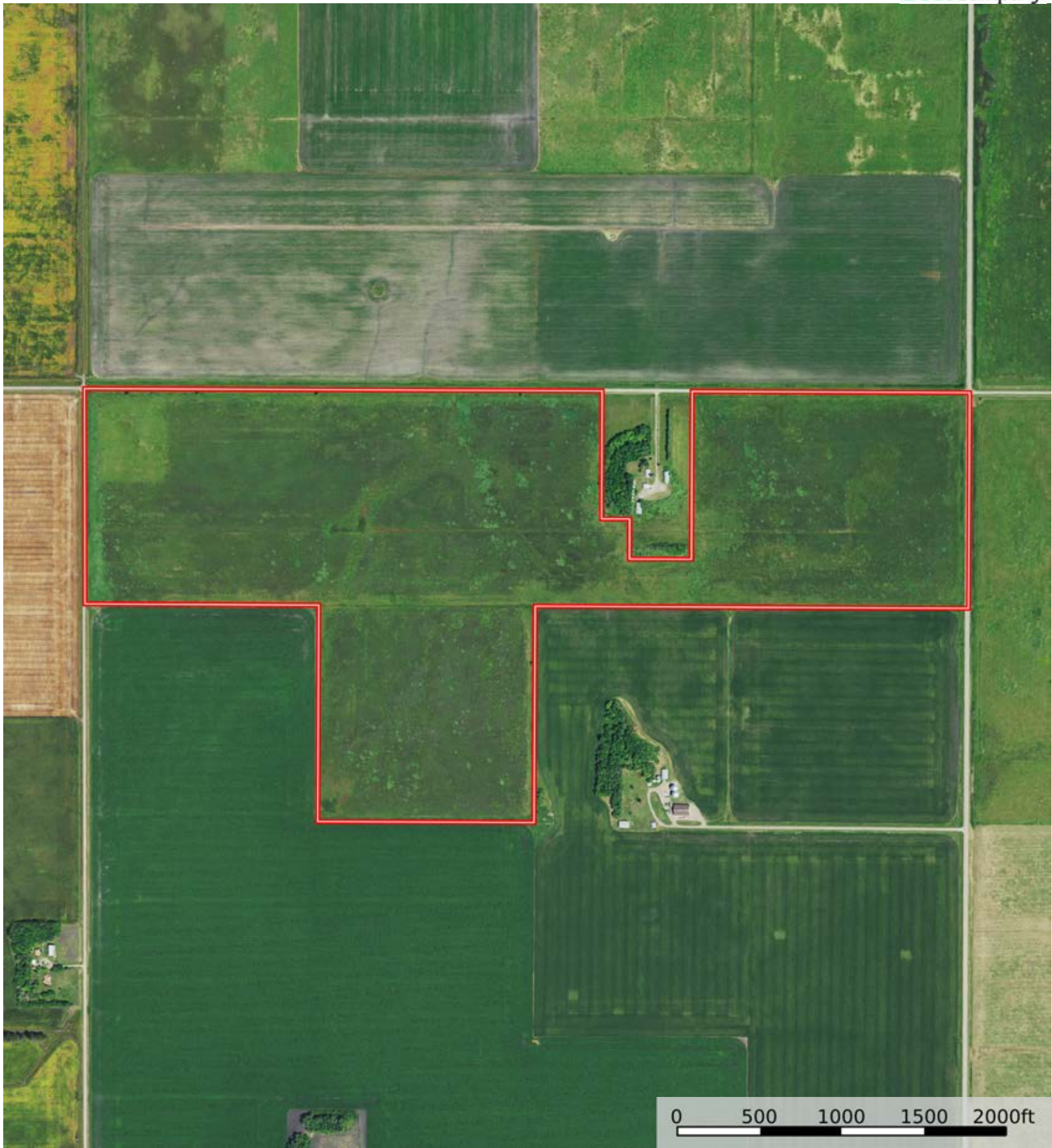
Polk County, Minnesota, 190.9 AC +/-




Boundary

L-2400223

Polk County, Minnesota, 190.9 AC +/-

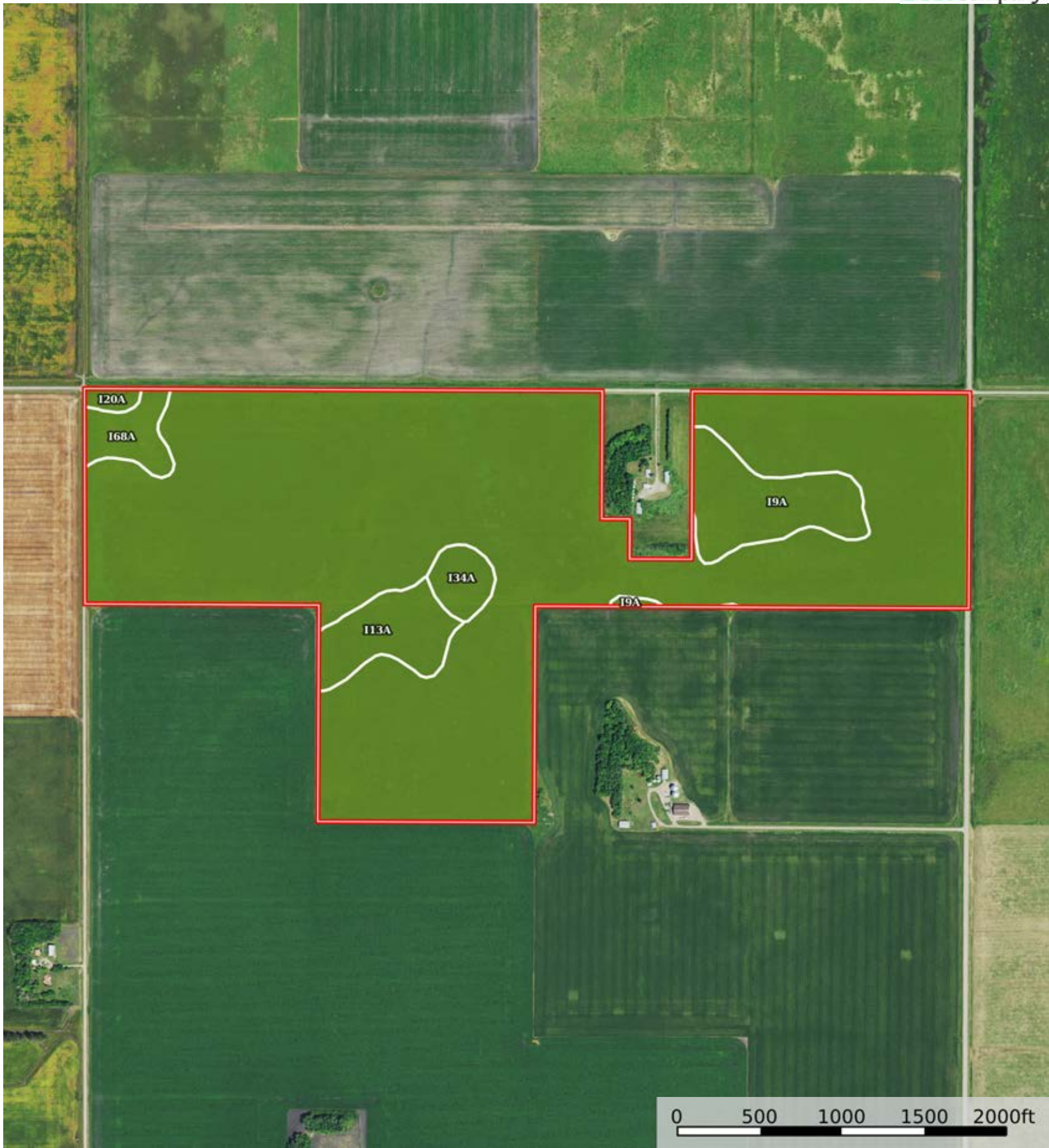



 Boundary



The information contained herein was obtained from sources deemed to be reliable. Land id™ Services makes no warranties or guarantees as to the completeness or accuracy thereof.





 Boundary

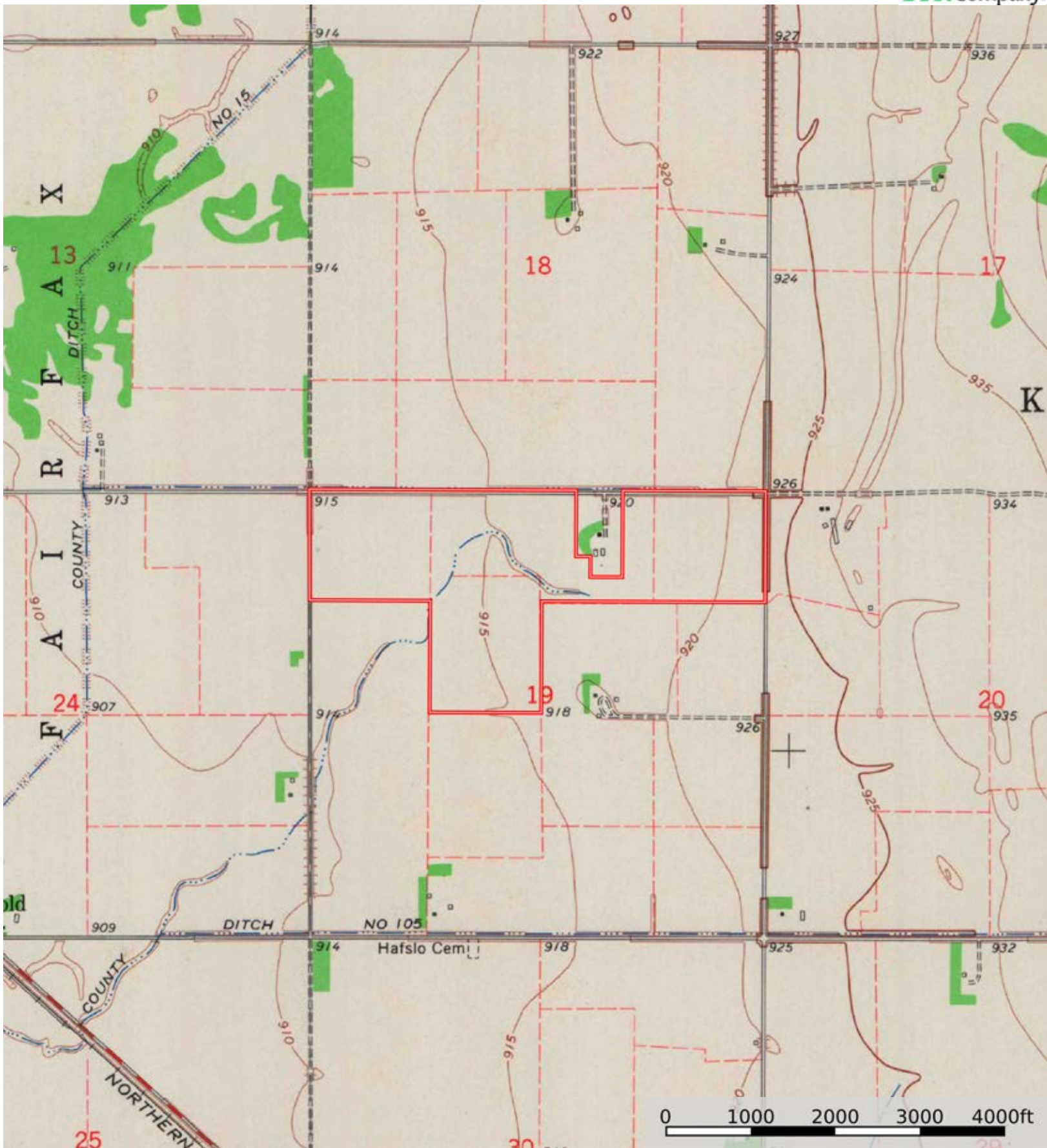
|  Boundary 190.98 ac

SOIL CODE	SOIL DESCRIPTION	ACRES	%	CPI	NCCPI	CAP
I20A	Foxlake loam, 0 to 1 percent slopes	163.97	85.86	94	61	2w
I9A	Clearwater clay, 0 to 1 percent slopes	11.74	6.15	95	51	2w
I13A	Espelie fine sandy loam, clayey till substratum, 0 to 1 percent slopes	7.8	4.08	70	52	2w
I68A	Wheatville very fine sandy loam, clayey till substratum, 0 to 2 percent slopes	4.32	2.26	89	60	2e
I34A	Huot fine sandy loam, clayey till substratum, 0 to 2 percent slopes	3.15	1.65	75	59	2s
TOTALS		190.98(*)	100%	92.66	59.97	2.0

(\*) Total acres may differ in the second decimal compared to the sum of each acreage soil. This is due to a round error because we only show the acres of each soil with two decimal.







Boundary