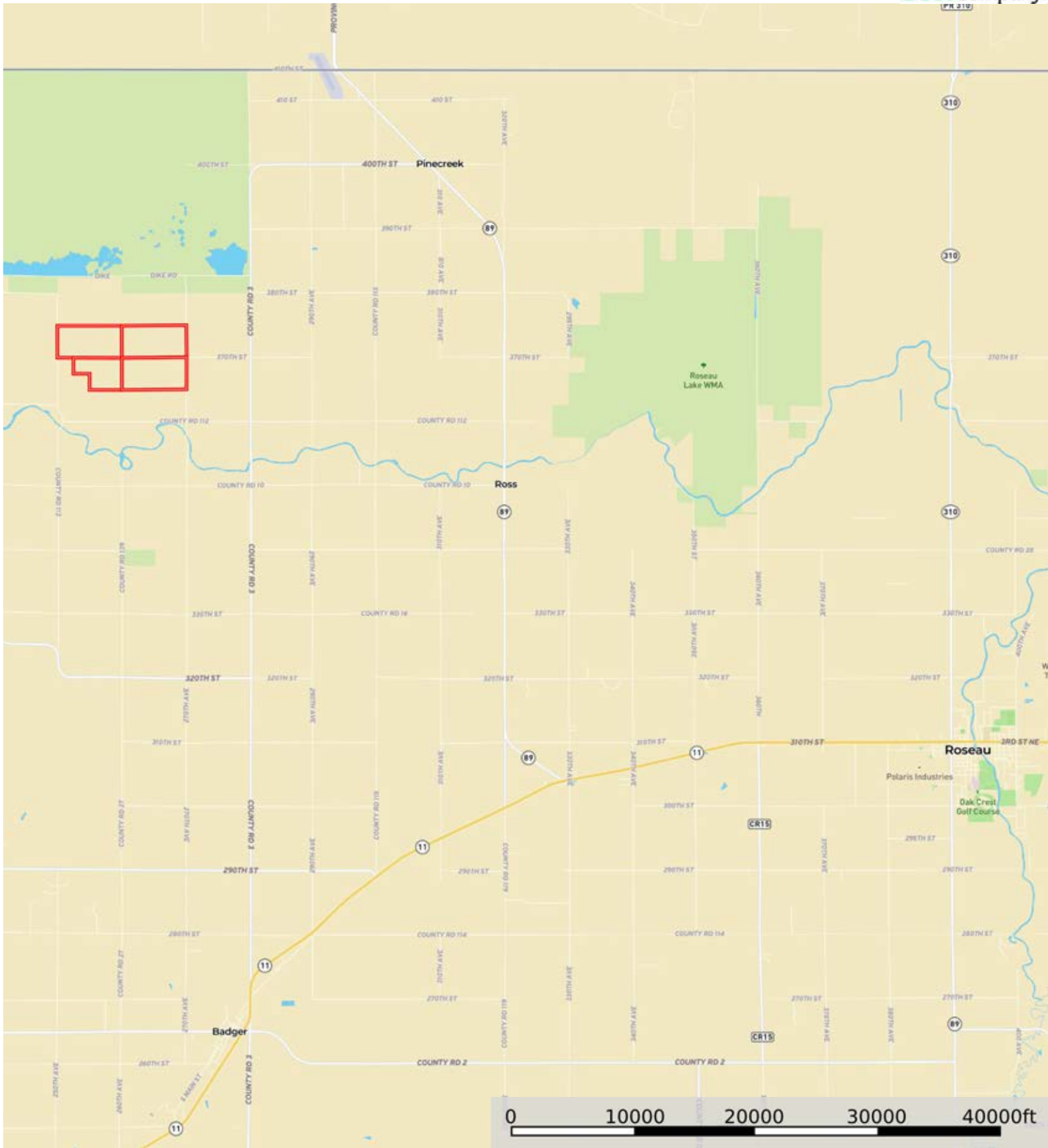


L-2400226

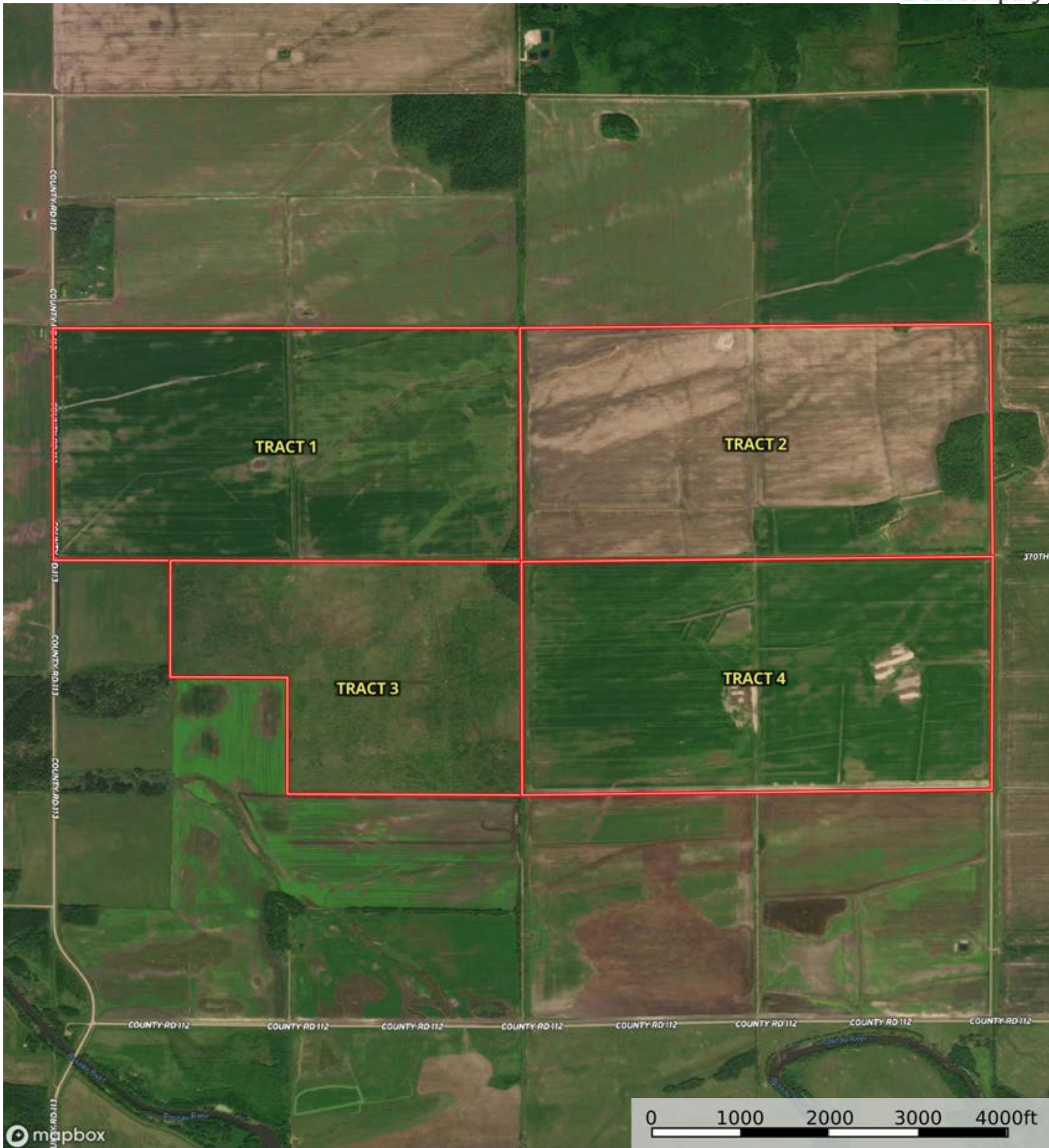
Roseau County, Minnesota, 1160 AC +/-



Boundary

L-2400226

Roseau County, Minnesota, 1160 AC +/-



mapbox

Boundary



The information contained herein was obtained from sources deemed to be reliable. Land id™ Services makes no warranties or guarantees as to the completeness or accuracy thereof.

L-2400226

Roseau County, Minnesota, 1160 AC +/-



Boundary


|  Boundary 317.89 ac

SOIL CODE	SOIL DESCRIPTION	ACRES	%	CPI	NCCPI	CAP
I92A	Grano clay, 0 to 1 percent slopes	232.53	73.15	79	53	2w
I741A	Boash clay loam, dense till, 0 to 1 percent slopes	39.98	12.58	88	51	2w
I127A	Percy loam, 0 to 1 percent slopes	25.33	7.97	85	41	2w
I830A	Woodslake clay, 0 to 1 percent slopes	19.39	6.1	86	31	3w
I117A	Skagen loam, dense till, 0 to 2 percent slopes, very cobbly	0.39	0.12	75	48	3s
I84A	Percy loam, 0 to 1 percent slopes, very cobbly	0.27	0.08	70	25	3s
TOTALS		317.89(*)	100%	81.03	50.42	2.06

(\*) Total acres may differ in the second decimal compared to the sum of each acreage soil. This is due to a round error because we only show the acres of each soil with two decimal.





 Boundary

|  Boundary 320.33 ac

SOIL CODE	SOIL DESCRIPTION	ACRES	%	CPI	NCCPI	CAP
I92A	Grano clay, 0 to 1 percent slopes	115.24	35.98	79	53	2w
I741A	Boash clay loam, dense till, 0 to 1 percent slopes	114.85	35.85	88	51	2w
I127A	Percy loam, 0 to 1 percent slopes	34.3	10.71	85	41	2w
I117A	Skagen loam, dense till, 0 to 2 percent slopes, very cobbly	27.65	8.63	75	48	3s
I830A	Woodslake clay, 0 to 1 percent slopes	17.26	5.39	86	31	3w
I83A	Wildwood muck, dense till, 0 to 1 percent slopes	7.95	2.48	15	39	6w
I84A	Percy loam, 0 to 1 percent slopes, very cobbly	3.08	0.96	70	25	3s
TOTALS		320.33(*)	100%	81.23	48.76	2.25

(\*) Total acres may differ in the second decimal compared to the sum of each acreage soil. This is due to a round error because we only show the acres of each soil with two decimal.



L-2400226

Roseau County, Minnesota, 1160 AC +/-



Boundary



The information contained herein was obtained from sources deemed to be reliable. Land id™ Services makes no warranties or guarantees as to the completeness or accuracy thereof.

|  Boundary 199.46 ac


SOIL CODE	SOIL DESCRIPTION	ACRES	%	CPI	NCCPI	CAP
I92A	Grano clay, 0 to 1 percent slopes	83.95	42.09	79	53	2w
I830A	Woodslake clay, 0 to 1 percent slopes	71.85	36.02	86	31	3w
I741A	Boash clay loam, dense till, 0 to 1 percent slopes	31.57	15.83	88	51	2w
I83A	Wildwood muck, dense till, 0 to 1 percent slopes	12.09	6.06	15	39	6w
TOTALS		199.46(*)	100%	79.07	43.91	2.6

(\*) Total acres may differ in the second decimal compared to the sum of each acreage soil. This is due to a round error because we only show the acres of each soil with two decimal.







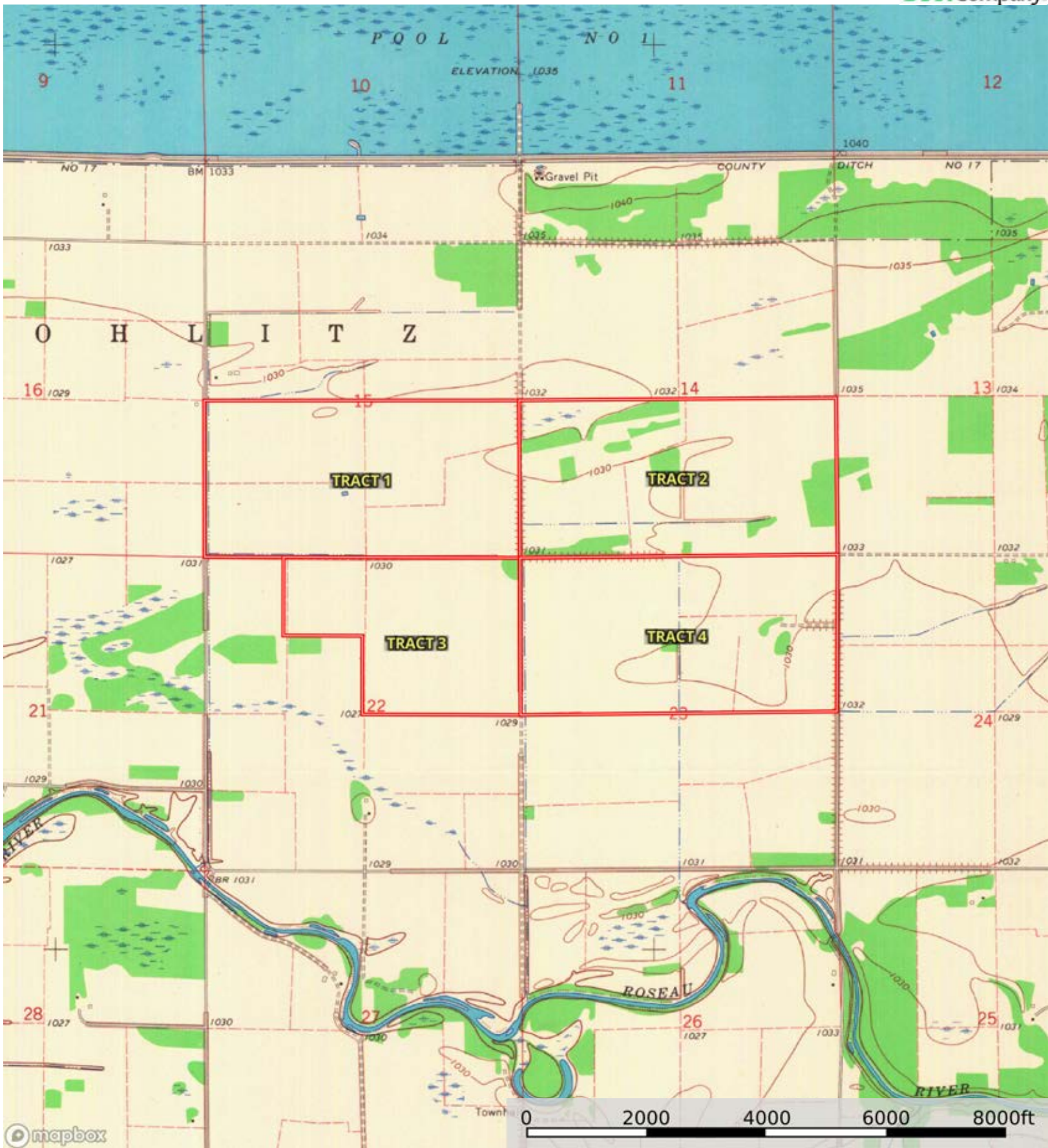
 Boundary


|  Boundary 320.29 ac

SOIL CODE	SOIL DESCRIPTION	ACRES	%	CPI	NCCPI	CAP
I741A	Boash clay loam, dense till, 0 to 1 percent slopes	301.19	94.04	88	51	2w
I127A	Percy loam, 0 to 1 percent slopes	7.55	2.36	85	41	2w
I830A	Woodslake clay, 0 to 1 percent slopes	6.25	1.95	86	31	3w
I92A	Grano clay, 0 to 1 percent slopes	5.3	1.65	79	53	2w
TOTALS		320.29(*)	100%	87.75	50.41	2.02

(\*) Total acres may differ in the second decimal compared to the sum of each acreage soil. This is due to a round error because we only show the acres of each soil with two decimal.





 Boundary