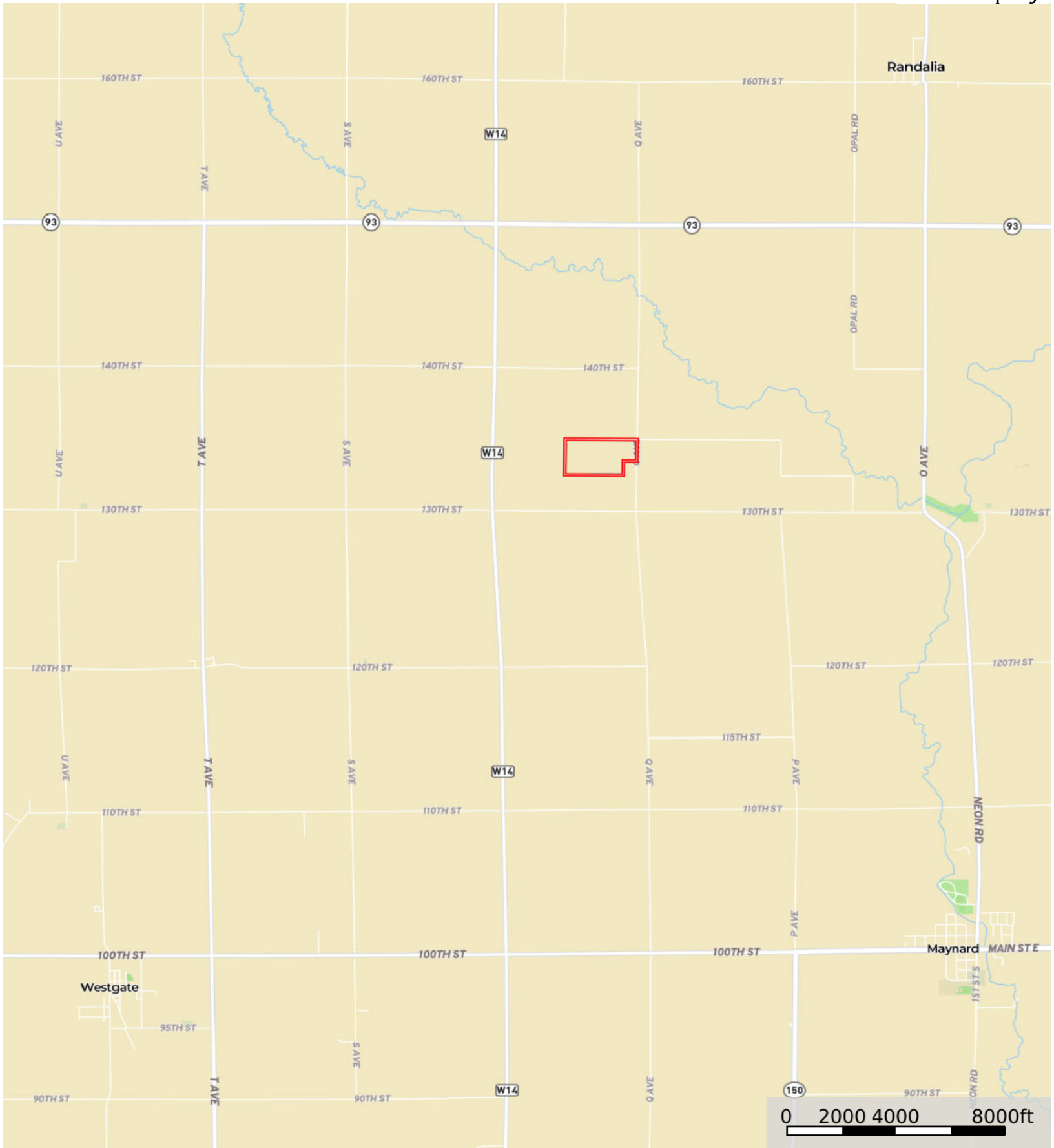
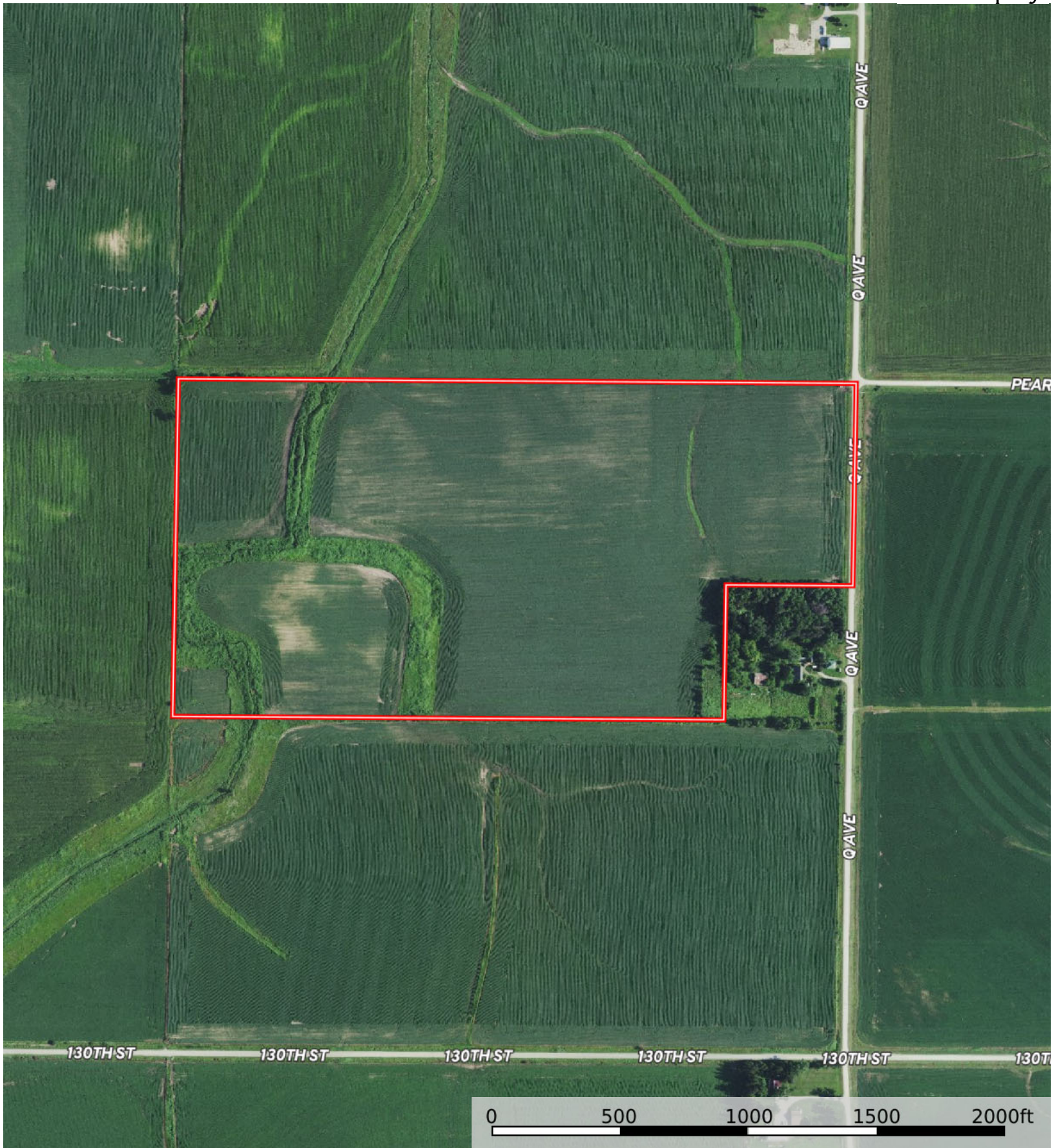


L-2400230

Fayette County, Iowa, 73.27 AC +/-



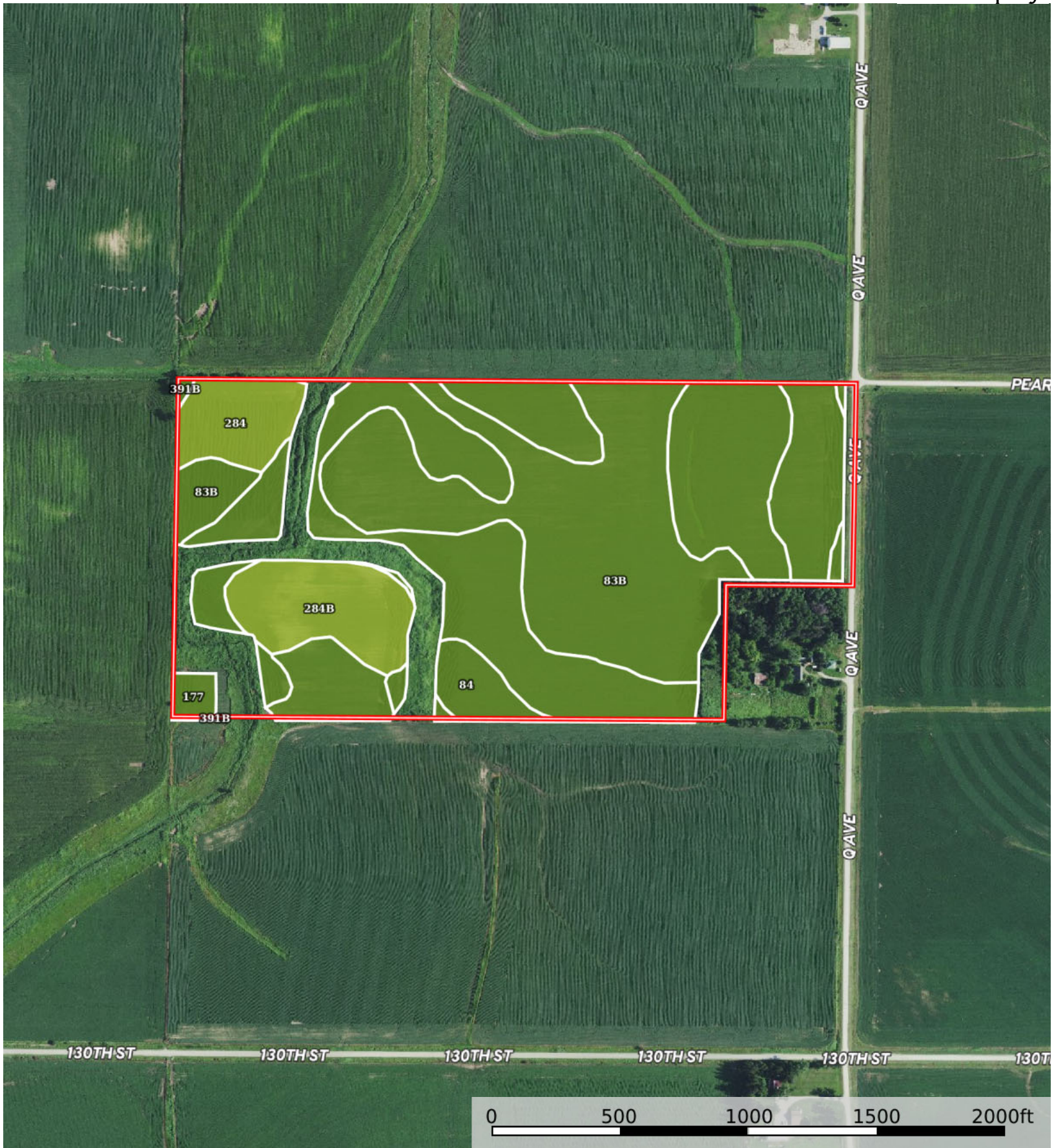
 Boundary



 Boundary

L-2400230

Fayette County, Iowa, 73.27 AC +/-

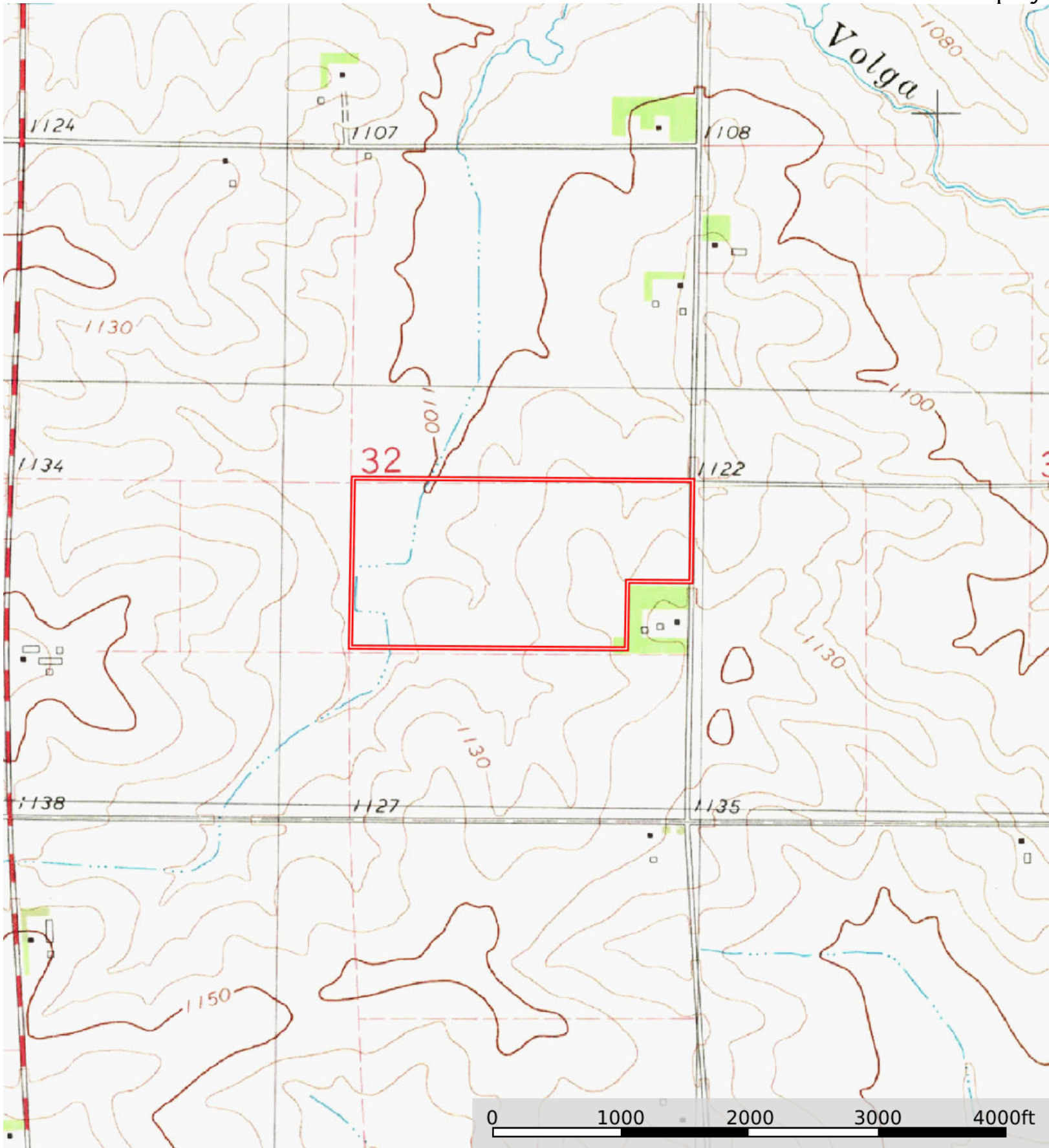


 Boundary

| SOIL CODE | SOIL DESCRIPTION | ACRES | % | CSR2 | CPI | NCCPI | CAP |
|-----------|--|----------|-------|-------|-----|-------|------|
| 83B | Kenyon loam, 2 to 5 percent slopes | 29.12 | 44.65 | 90.0 | 0 | 87 | 2e |
| 391B | Clyde-Floyd complex, 1 to 4 percent slopes | 24.78 | 37.99 | 87.0 | 0 | 89 | 2w |
| 284B | Flagler sandy loam, 2 to 5 percent slopes | 5.34 | 8.19 | 49.0 | 0 | 65 | 3e |
| 284 | Flagler sandy loam, 0 to 2 percent slopes | 3.35 | 5.14 | 56.0 | 0 | 66 | 3s |
| 84 | Clyde clay loam, 0 to 3 percent slopes | 1.91 | 2.93 | 88.0 | 0 | 91 | 2w |
| 177 | Saude loam, 0 to 2 percent slopes | 0.72 | 1.1 | 60.0 | 0 | 77 | 2s |
| TOTALS | | 65.22(*) | 100% | 83.37 | - | 84.89 | 2.13 |

(*) Total acres may differ in the second decimal compared to the sum of each acreage soil. This is due to a round error because we only show the acres of each soil with two decimal.





 Boundary