

L-2400279

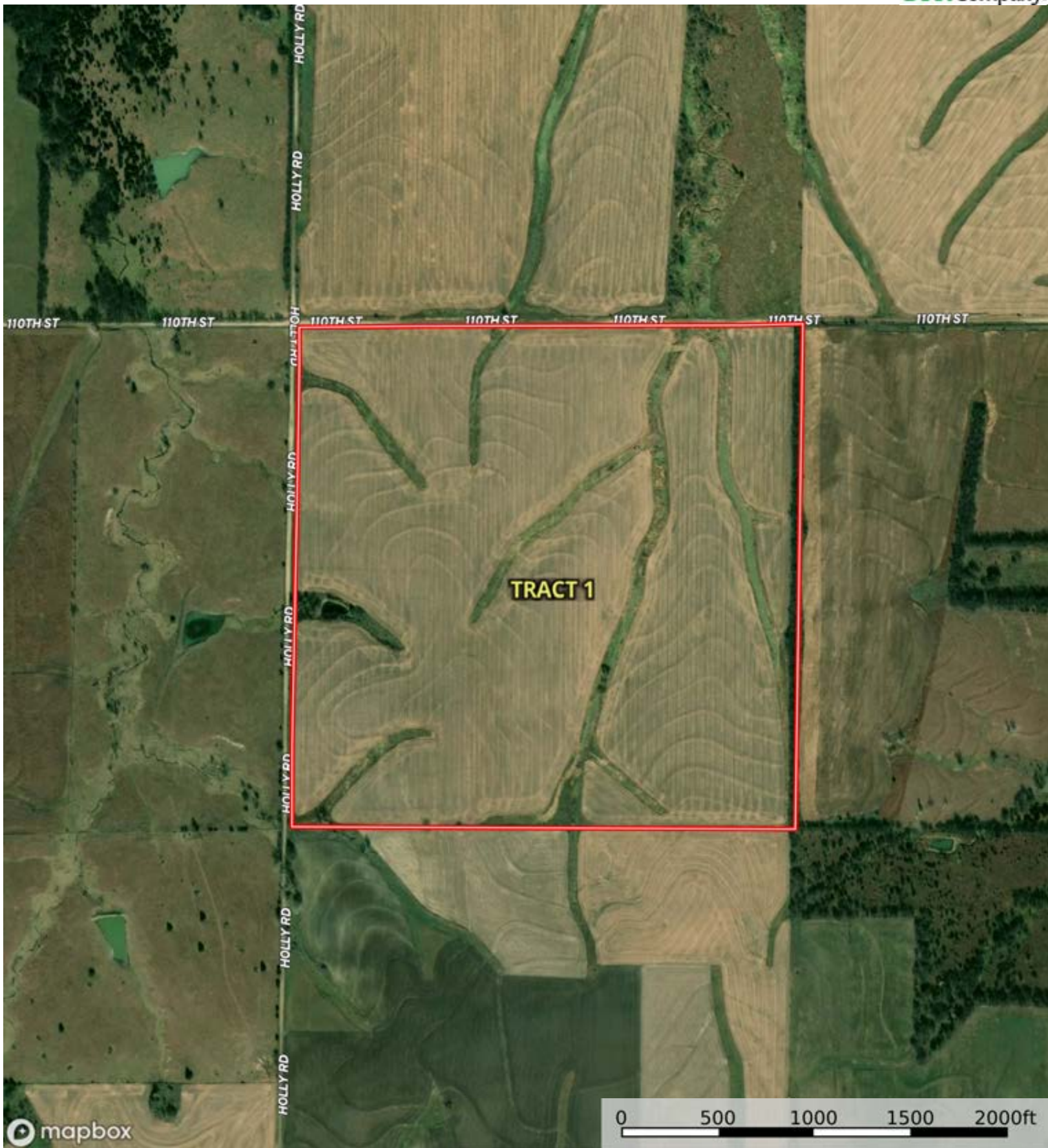
Marion County, Kansas, 237.51 AC +/-



Boundary

L-2400279

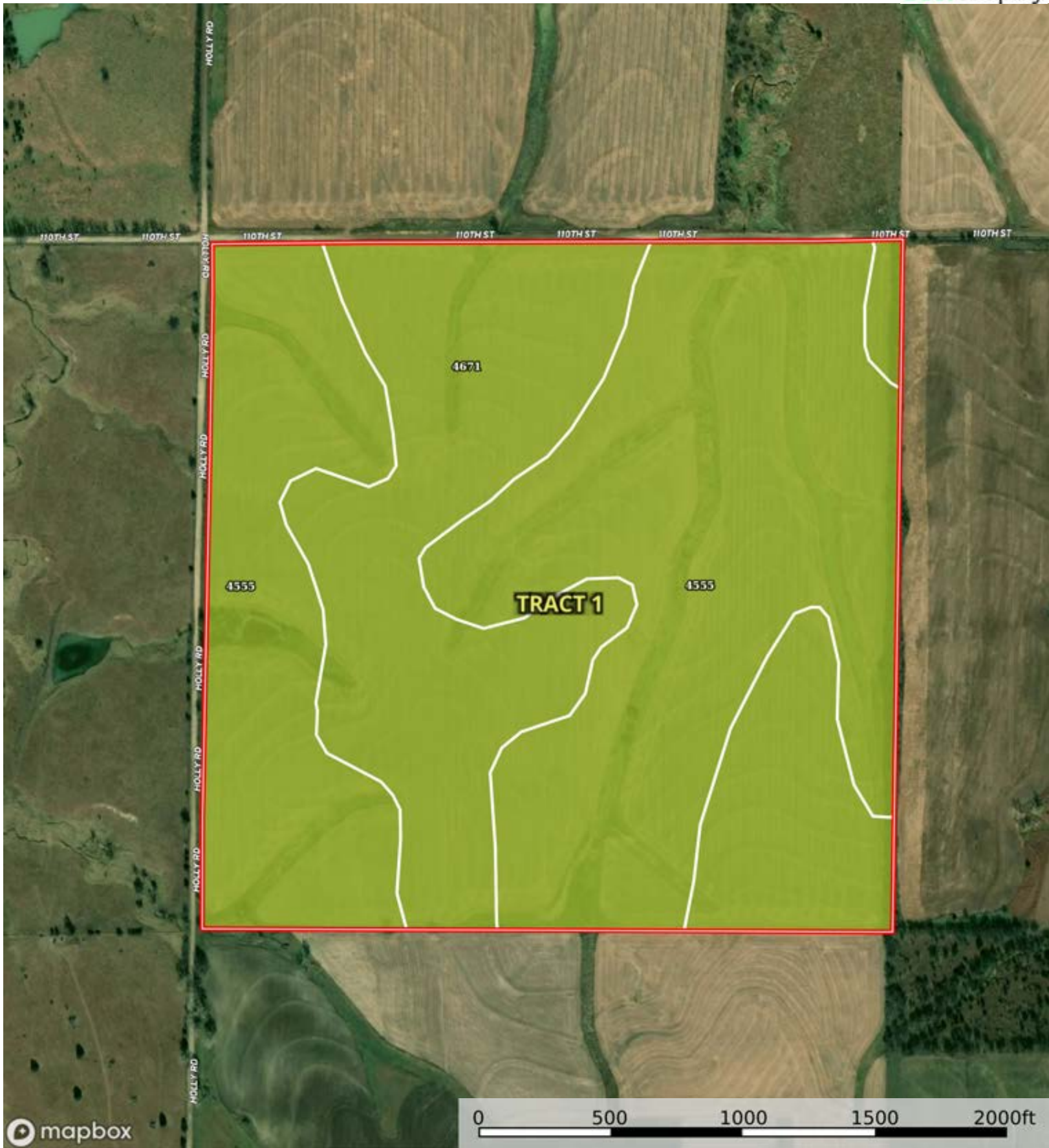
Marion County, Kansas, 237.51 AC +/-



 Boundary

L-2400279

Marion County, Kansas, 237.51 AC +/-



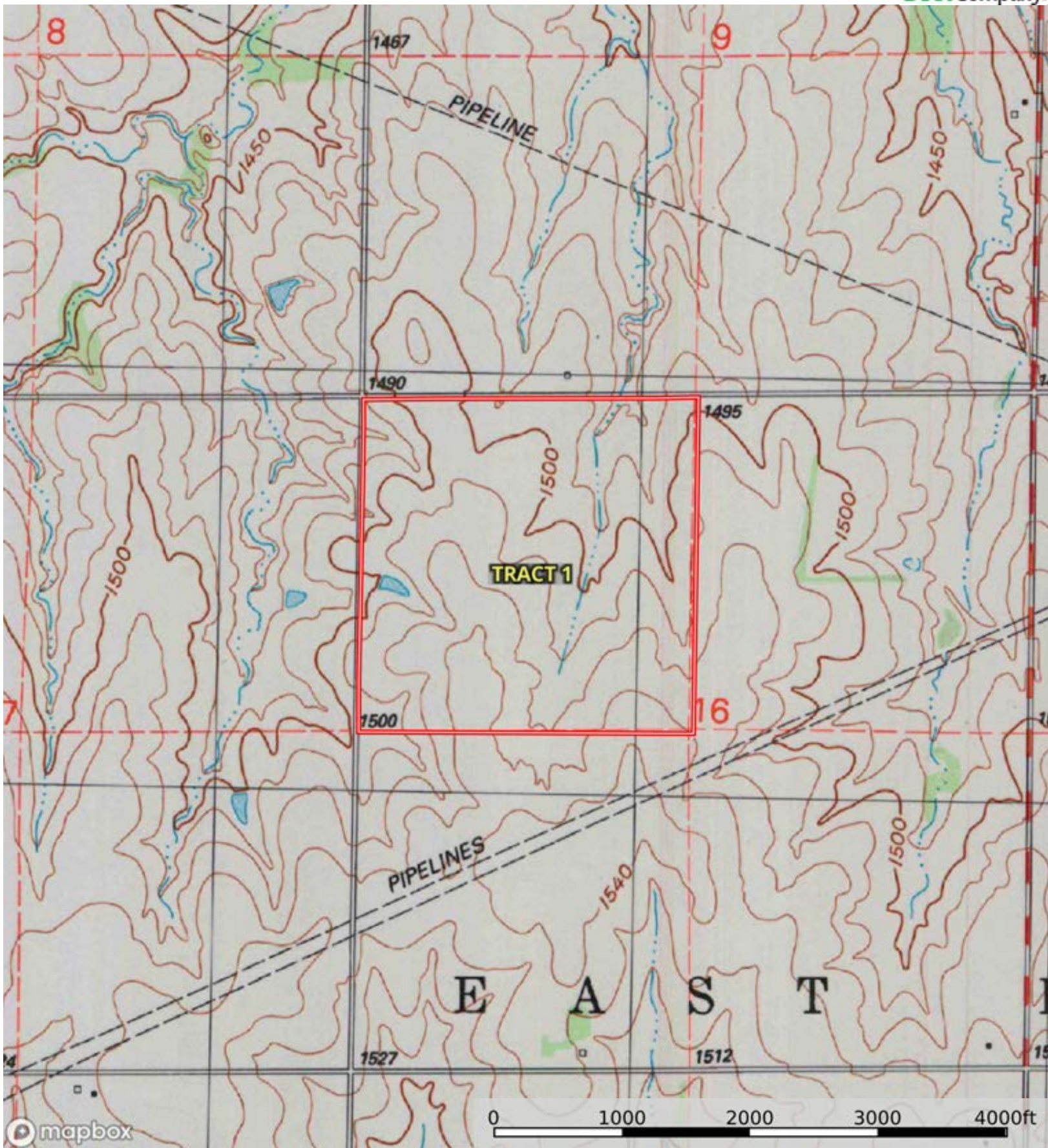
Boundary


|  Boundary 157.41 ac

SOIL CODE	SOIL DESCRIPTION	ACRES	%	CPI	NCCPI	CAP
4555	Clime silty clay loam, 3 to 7 percent slopes	97.65	62.04	0	42	3e
4671	Irwin silty clay loam, 1 to 3 percent slopes	59.76	37.96	0	57	3s
TOTALS		157.4 1(*)	100%	-	47.69	3.0

(*) Total acres may differ in the second decimal compared to the sum of each acreage soil. This is due to a round error because we only show the acres of each soil with two decimal.

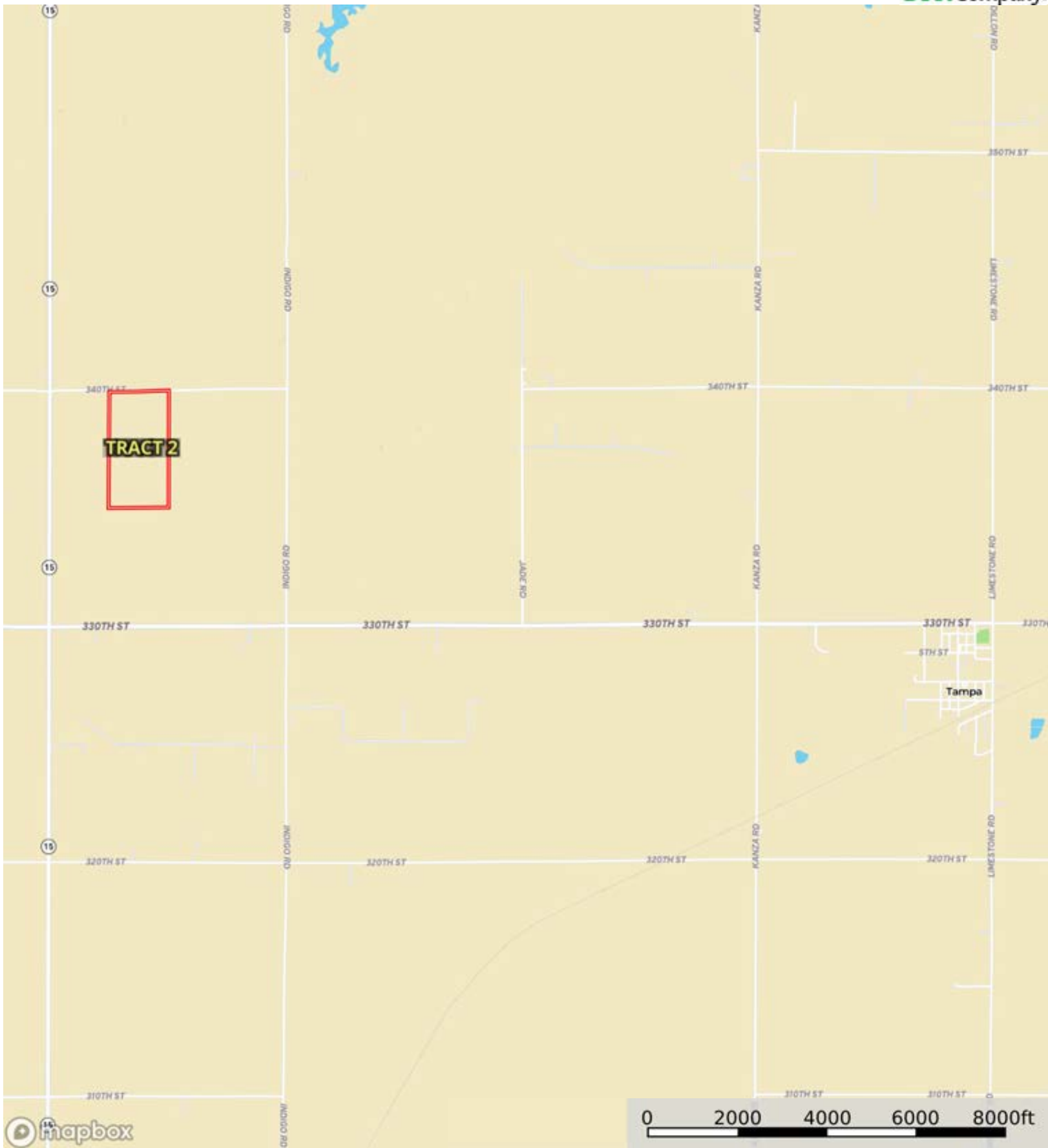





 Boundary

L-2400279

Marion County, Kansas, 237.51 AC +/-



 Boundary




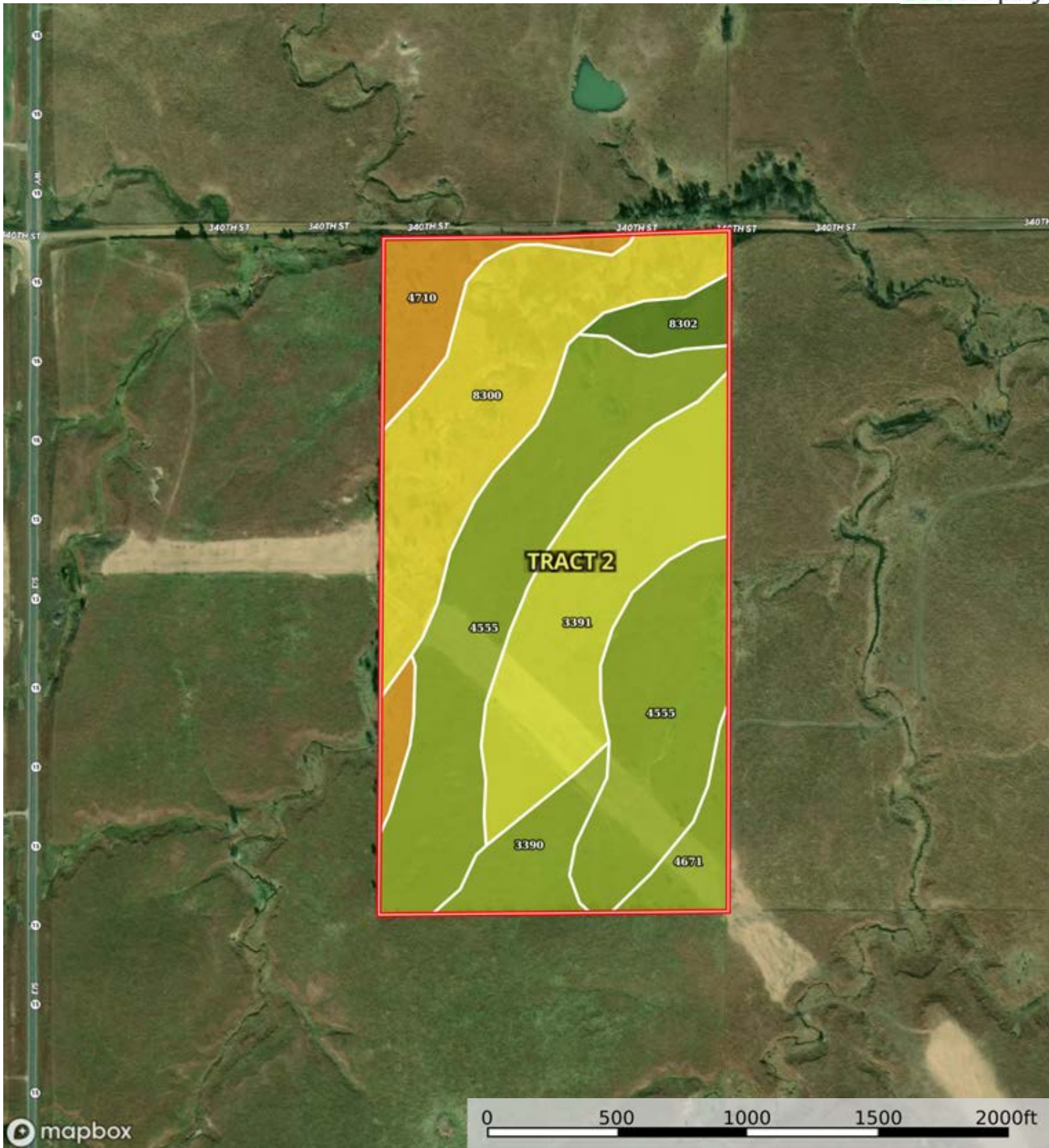
The information contained herein was obtained from sources deemed to be reliable. Land id™ Services makes no warranties or guarantees as to the completeness or accuracy thereof.


L-2400279

Marion County, Kansas, 237.51 AC +/-



 Boundary



 Boundary

|  Boundary 80.34 ac

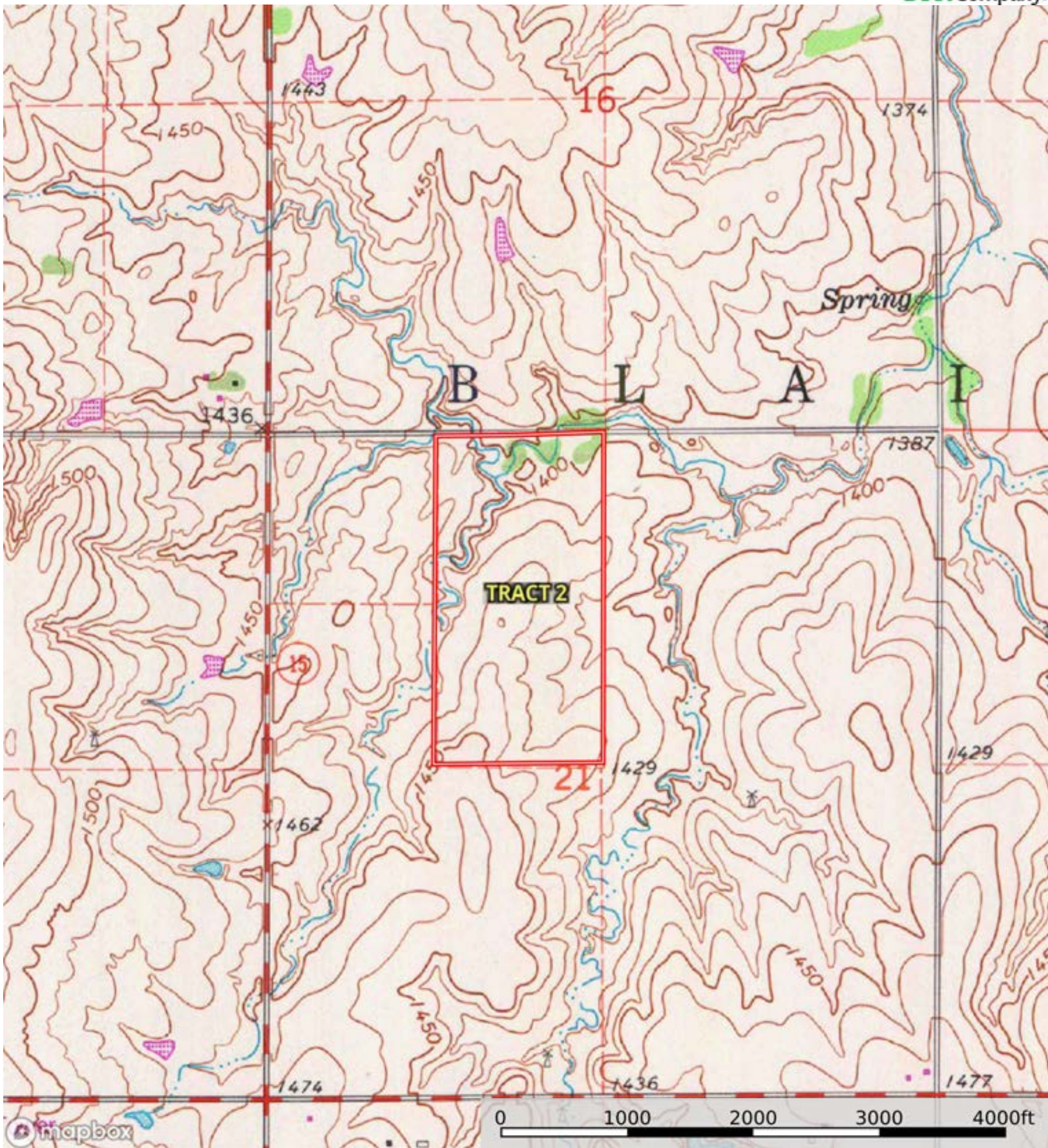
SOIL CODE	SOIL DESCRIPTION	ACRES	%	CPI	NCCPI	CAP
4555	Clime silty clay loam, 3 to 7 percent slopes	31.67	39.42	0	42	3e
8300	Verdigris silt loam, channeled, 0 to 2 percent slopes, frequently flooded	17.16	21.36	0	46	5w
3391	Lancaster loam, 3 to 7 percent slopes	15.8	19.66	0	52	4e
4710	Kipson silty clay loam, 5 to 30 percent slopes	6.14	7.64	0	26	6s
3390	Lancaster loam, 1 to 3 percent slopes	4.29	5.34	0	53	3e
4671	Irwin silty clay loam, 1 to 3 percent slopes	2.94	3.66	0	57	3s
8302	Verdigris silt loam, 0 to 1 percent slopes, occasionally flooded	2.34	2.91	0	85	2w
TOTALS		80.34(*)	100%	-	45.98	3.82


(*) Total acres may differ in the second decimal compared to the sum of each acreage soil. This is due to a round error because we only show the acres of each soil with two decimal.



L-2400279

Marion County, Kansas, 237.51 AC +/-



 Boundary