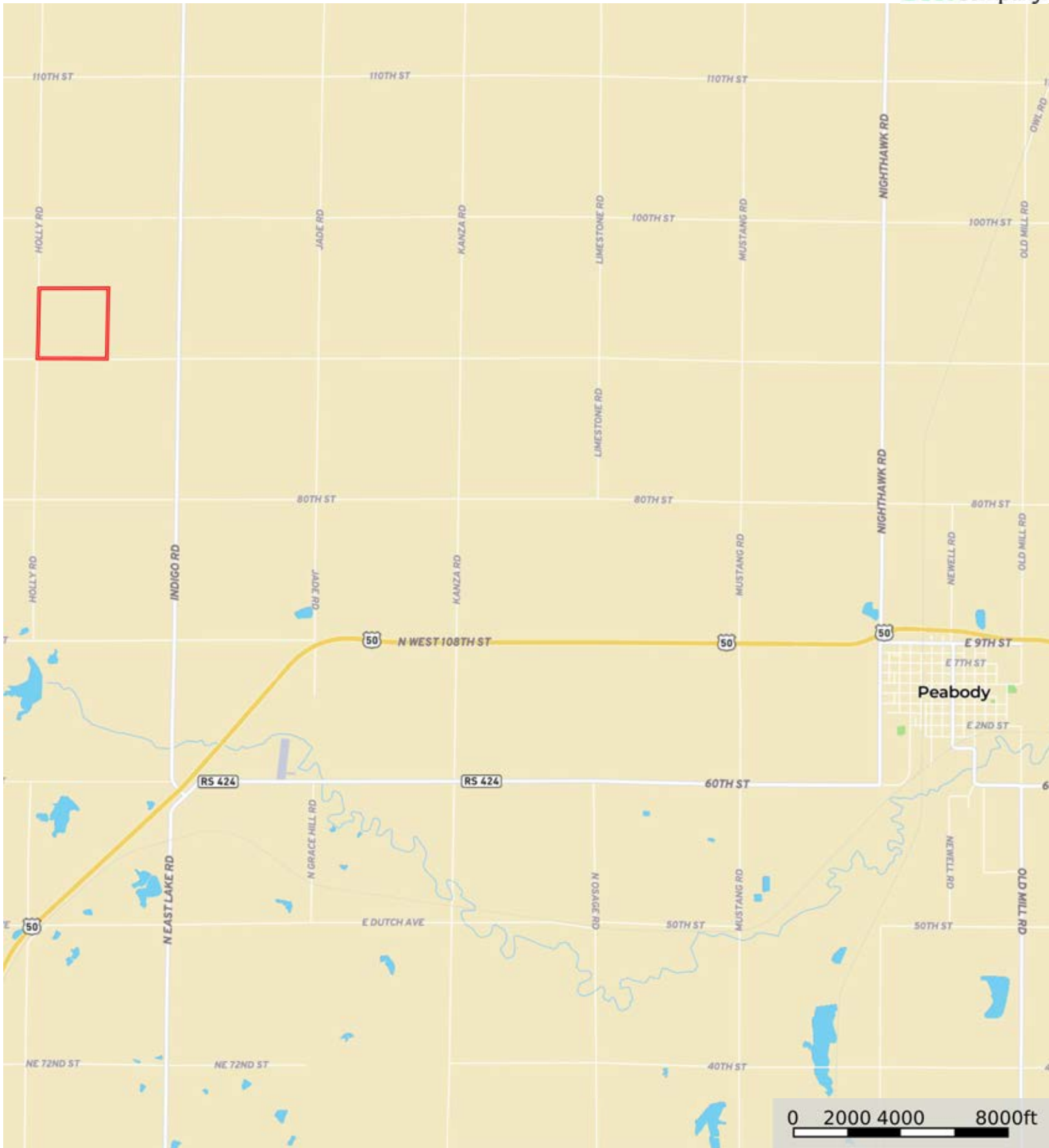



L-2400280

Marion County, Kansas, 156.58 AC +/-



 Boundary




The information contained herein was obtained from sources deemed to be reliable. Land id™ Services makes no warranties or guarantees as to the completeness or accuracy thereof.

L-2400280

Marion County, Kansas, 156.58 AC +/-



 Boundary



 Boundary



|  Boundary 156.49 ac

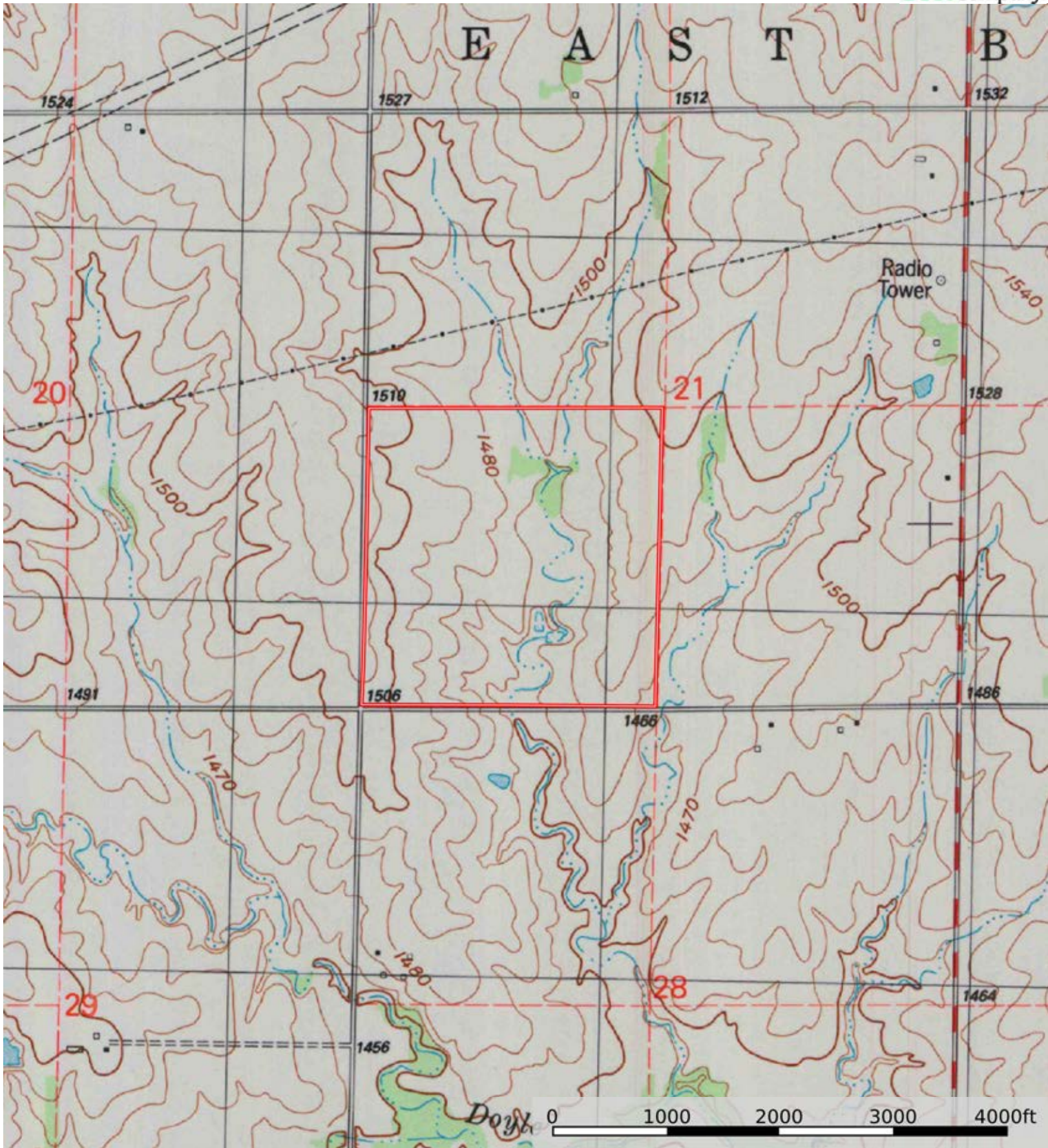
SOIL CODE	SOIL DESCRIPTION	ACRES	%	CPI	NCCPI	CAP
4555	Clime silty clay loam, 3 to 7 percent slopes	82.7	52.85	0	42	3e
3911	Rosehill silty clay, 1 to 3 percent slopes	49.28	31.49	0	43	3e
8300	Verdigris silt loam, channeled, 0 to 2 percent slopes, frequently flooded	24.51	15.66	0	46	5w
TOTALS		156.49(*)	100%	-	42.94	3.31


(*) Total acres may differ in the second decimal compared to the sum of each acreage soil. This is due to a round error because we only show the acres of each soil with two decimal.



L-2400280

Marion County, Kansas, 156.58 AC +/-



 Boundary