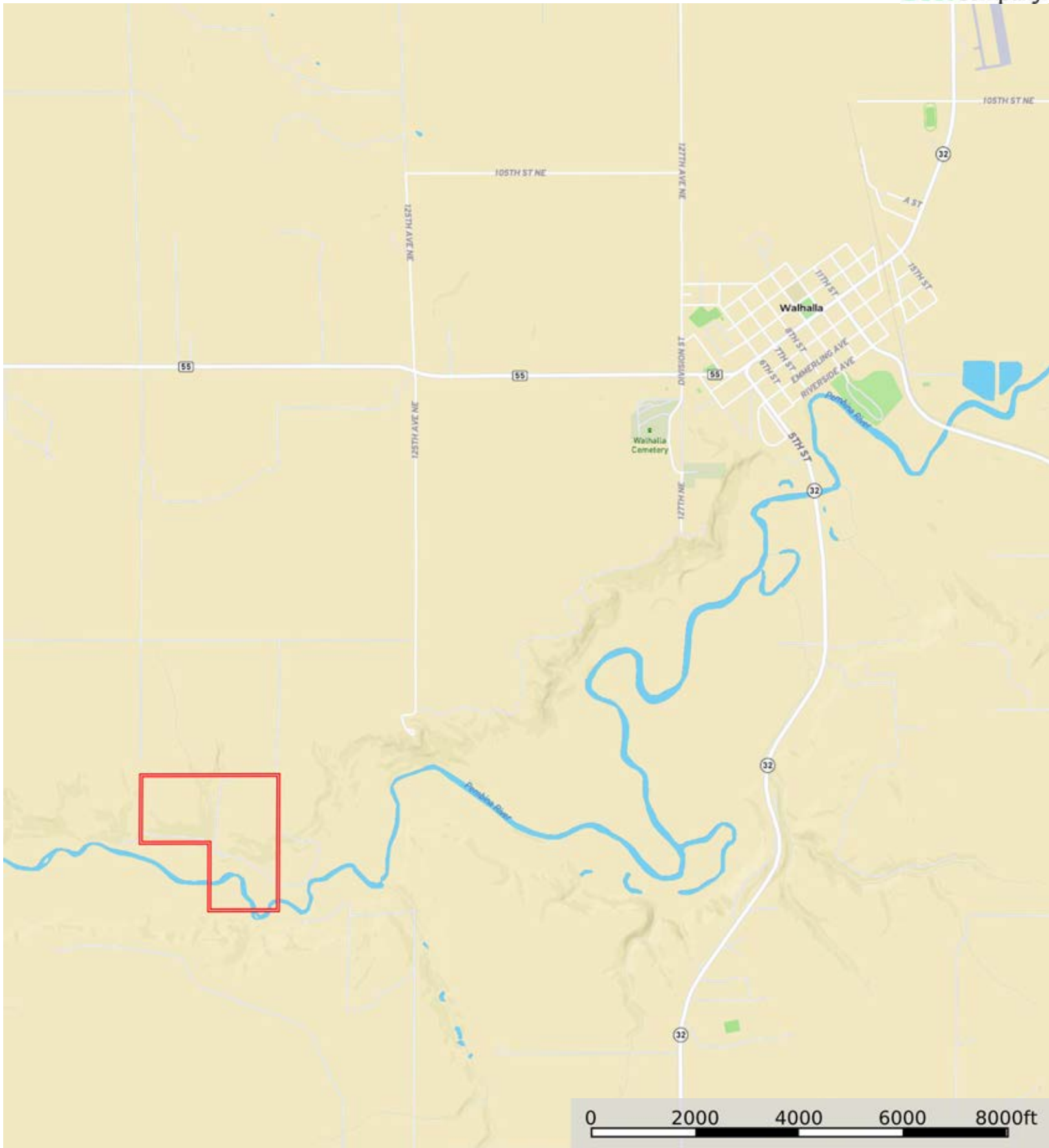


L-2400291

Cavalier County, North Dakota, 120 AC +/-




Boundary

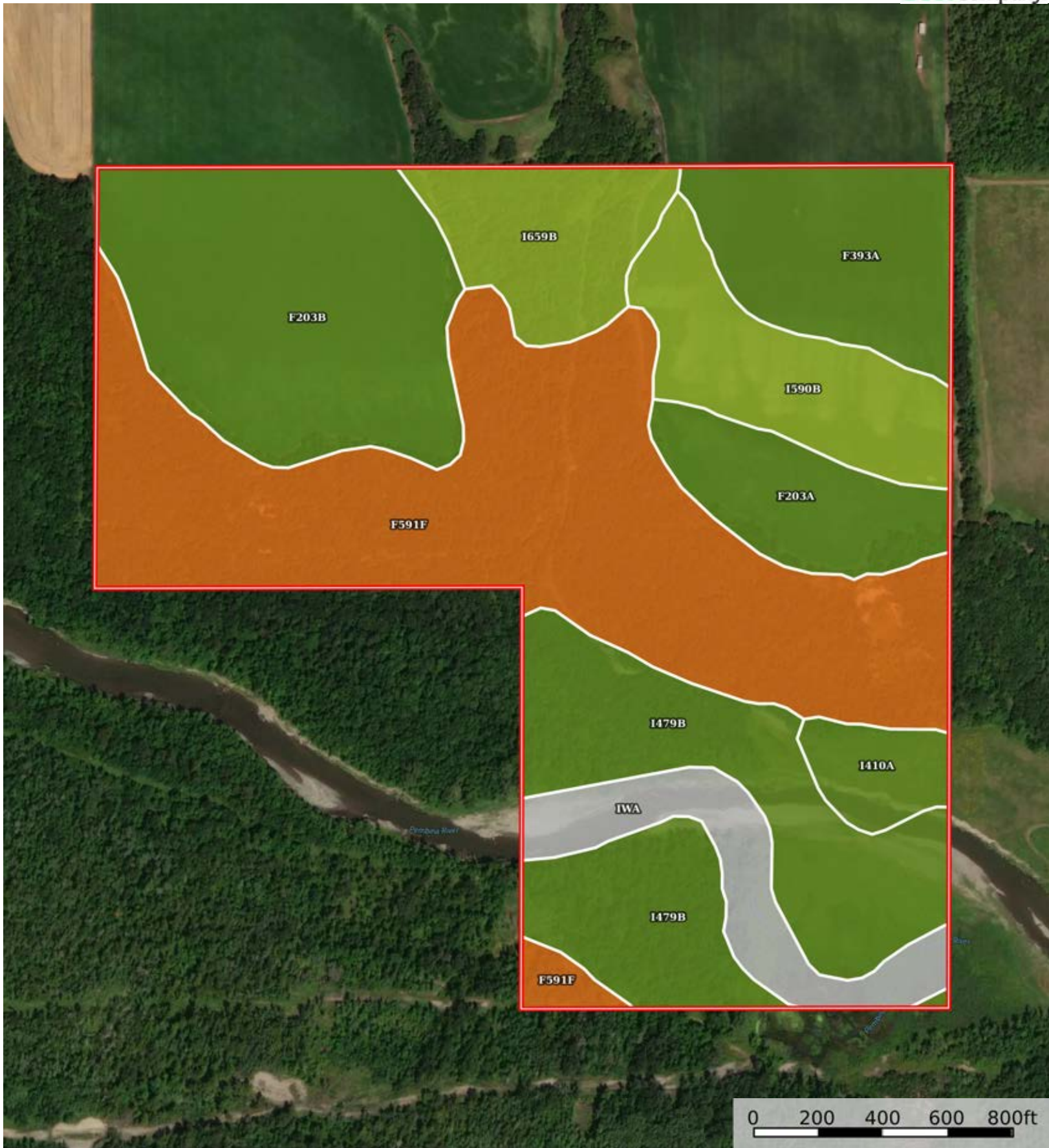
L-2400291


Cavalier County, North Dakota, 120 AC +/-



 Boundary





 Boundary

|  Boundary 118.98 ac

SOIL CODE	SOIL DESCRIPTION	ACRES	%	CPI	NCCPI	CAP
F591F	Olga-Kloten complex, 9 to 75 percent slopes	37.74	31.72	13	10	7e
I479B	Fairdale-Fluvaquents, channeled complex, 0 to 6 percent slopes, frequently flooded	20.03	16.83	64	43	2c
F203B	Waukon loam, 3 to 6 percent slopes	19.73	16.58	76	54	2e
F393A	Inkster loam, 0 to 2 percent slopes	9.57	8.04	73	47	2e
I590B	Vang-Coe complex, 2 to 6 percent slopes	8.87	7.46	53	47	3e
I659B	Binford sandy loam, 2 to 6 percent slopes	7.1	5.97	43	37	3e
F203A	Waukon loam, 0 to 3 percent slopes	6.6	5.55	80	55	2c
IWa	Water	6.5	5.46	0	-	-
I410A	La Prairie silt loam, 0 to 2 percent slopes, occasionally flooded	2.84	2.39	86	69	2c
TOTALS		118.98(*)	100%	46.38	33.56	3.82

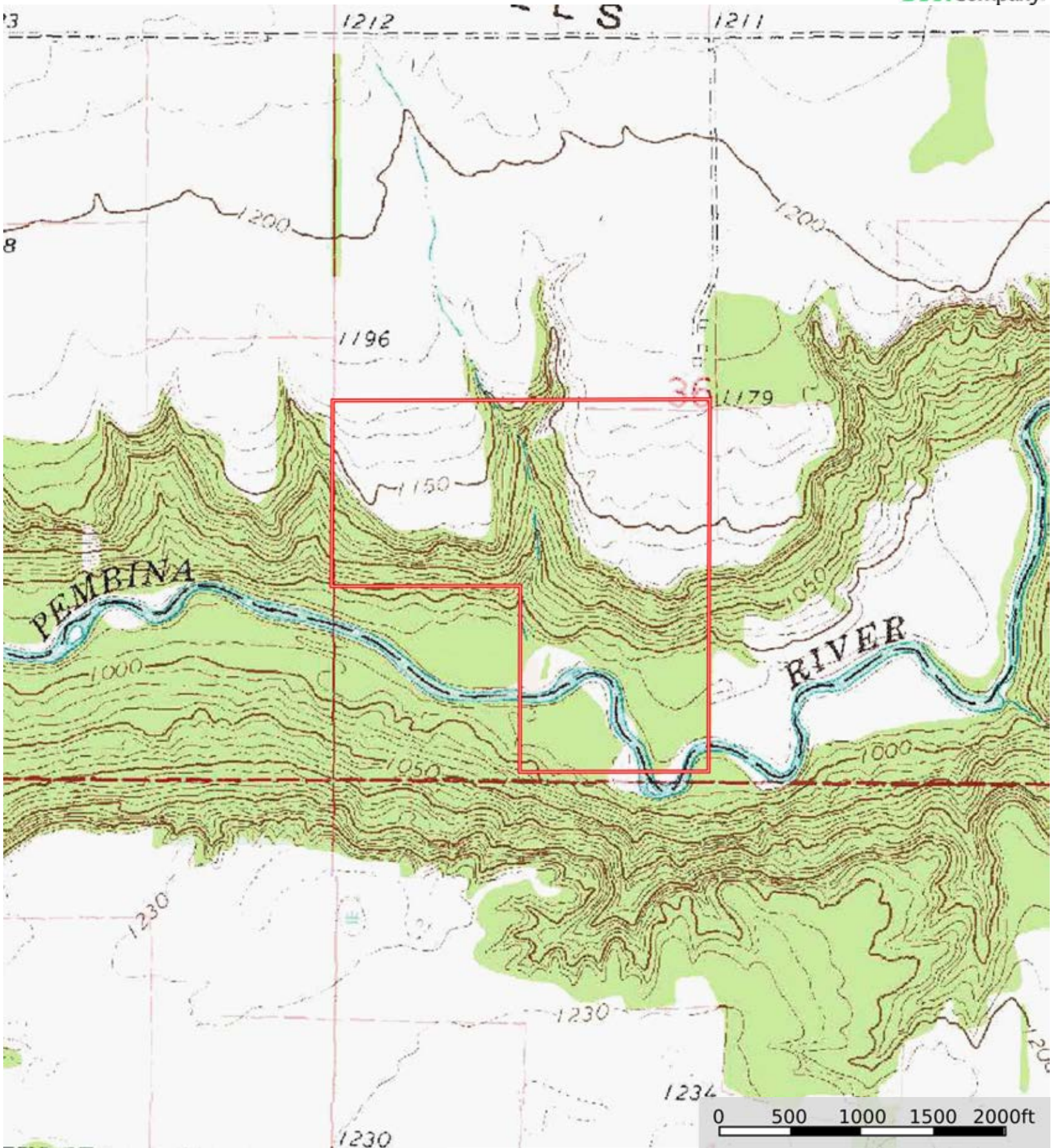
(\*) Total acres may differ in the second decimal compared to the sum of each acreage soil. This is due to a round error because we only show the acres of each soil with two decimal.





L-2400291

Cavalier County, North Dakota, 120 AC +/-



Boundary



The information contained herein was obtained from sources deemed to be reliable. Land id™ Services makes no warranties or guarantees as to the completeness or accuracy thereof.