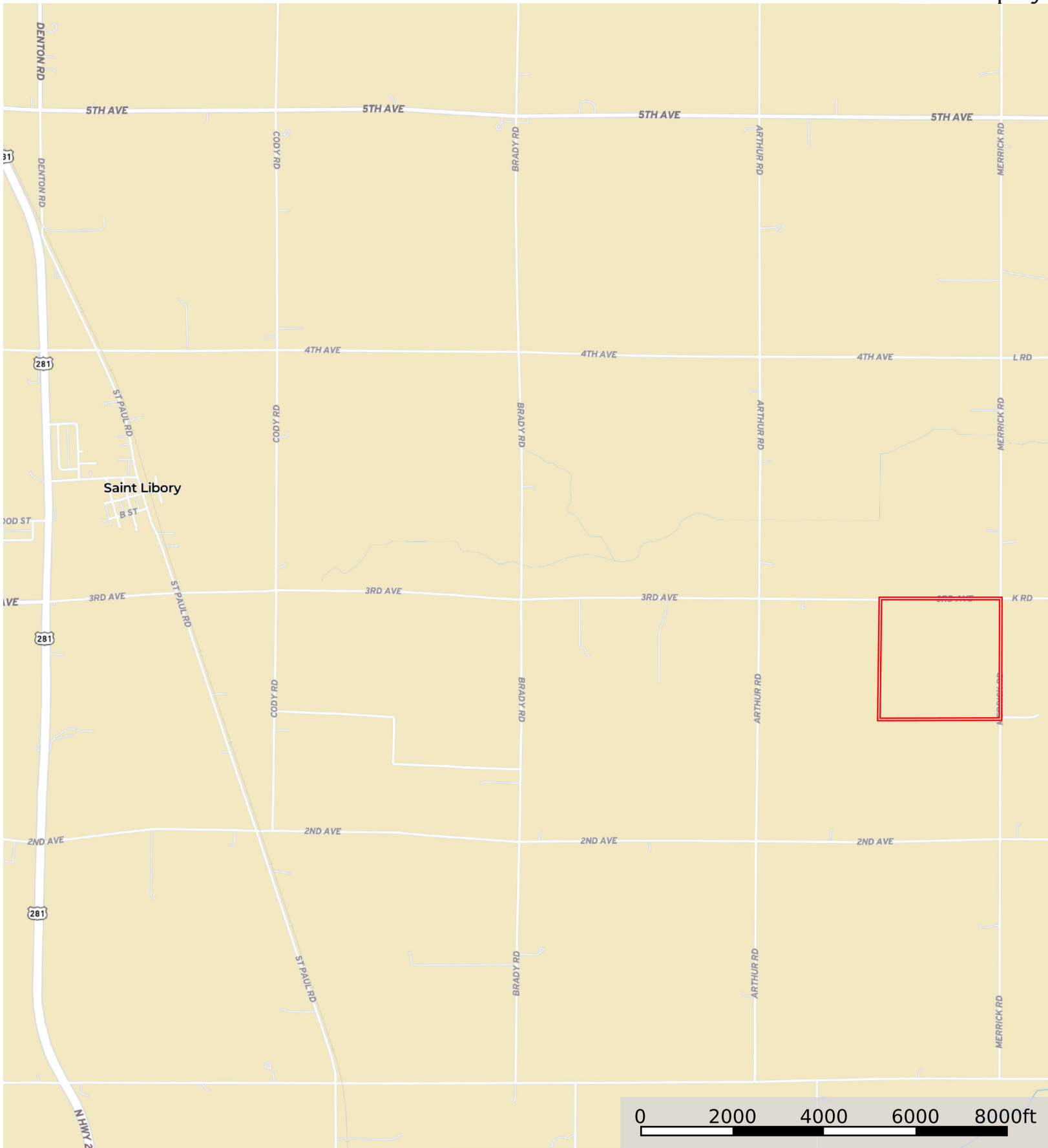

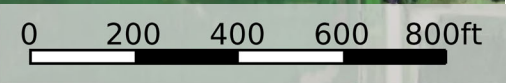



L-2400301

Howard County, Nebraska, 160 AC +/-




 Boundary



 Boundary



 Boundary



|  Boundary 161.43 ac

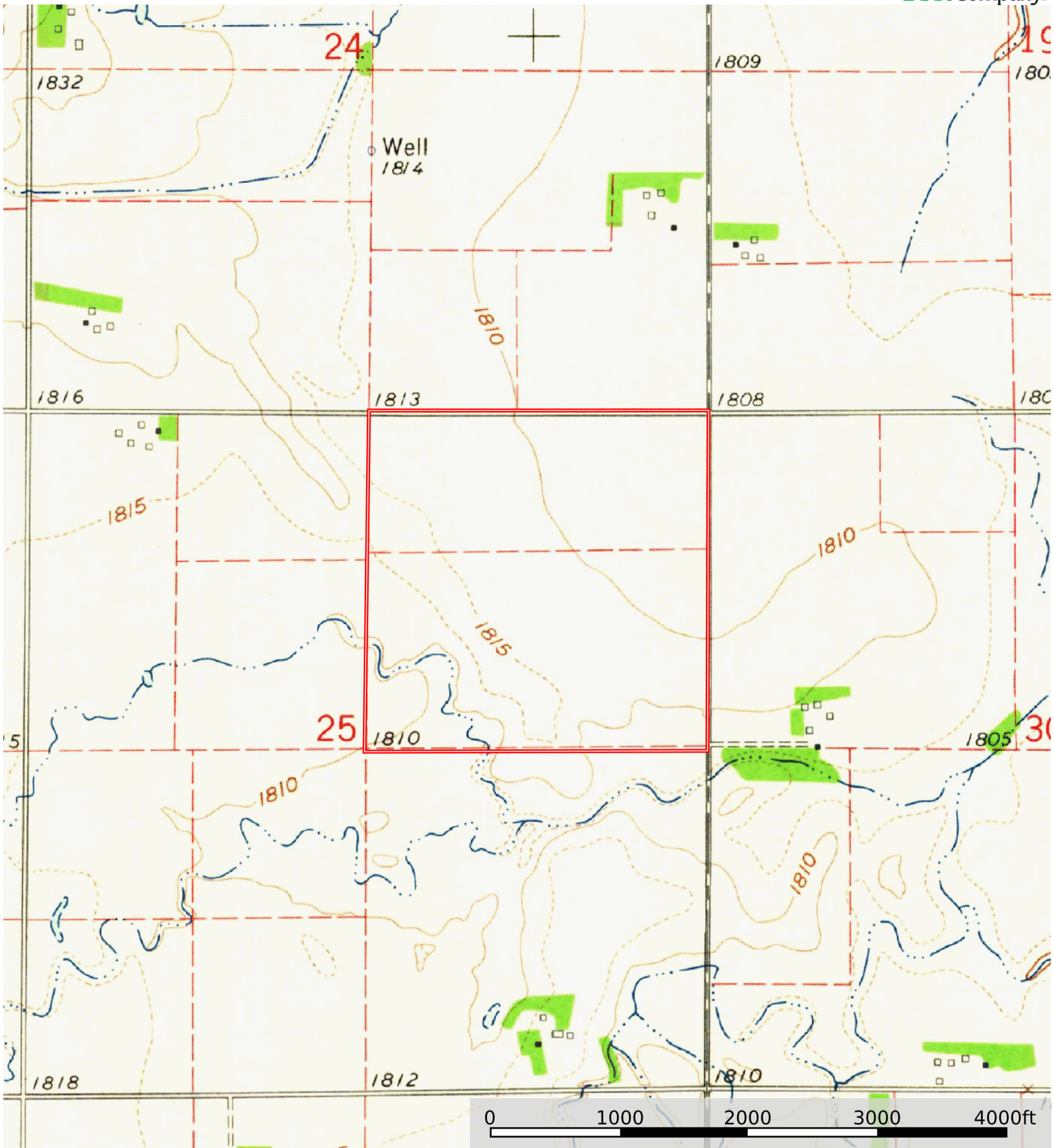
SOIL CODE	SOIL DESCRIPTION	ACRES	%	CPI	NCCPI	CAP
8461	Gayville variant silt loam, rarely flooded	66.92	41.46	0	41	4s
9063	Kenesaw silt loam, 0 to 1 percent slopes	37.56	23.27	0	73	2c
8557	Silver Creek-Slickspots complex, rarely flooded	27.23	16.87	0	33	3w
6529	Janude sandy loam, very rarely flooded	13.85	8.58	0	57	2c
8869	Hord silt loam, 0 to 1 percent slopes	8.63	5.35	0	75	2c
6532	Loretto complex, 0 to 6 percent slopes	7.24	4.49	0	61	2e
TOTALS		161.43(*)	100%	-	51.19	3.0


(*) Total acres may differ in the second decimal compared to the sum of each acreage soil. This is due to a round error because we only show the acres of each soil with two decimal.



L-2400301

Howard County, Nebraska, 160 AC +/-



 Boundary



The information contained herein was obtained from sources deemed to be reliable. Land id™ Services makes no warranties or guarantees as to the completeness or accuracy thereof.