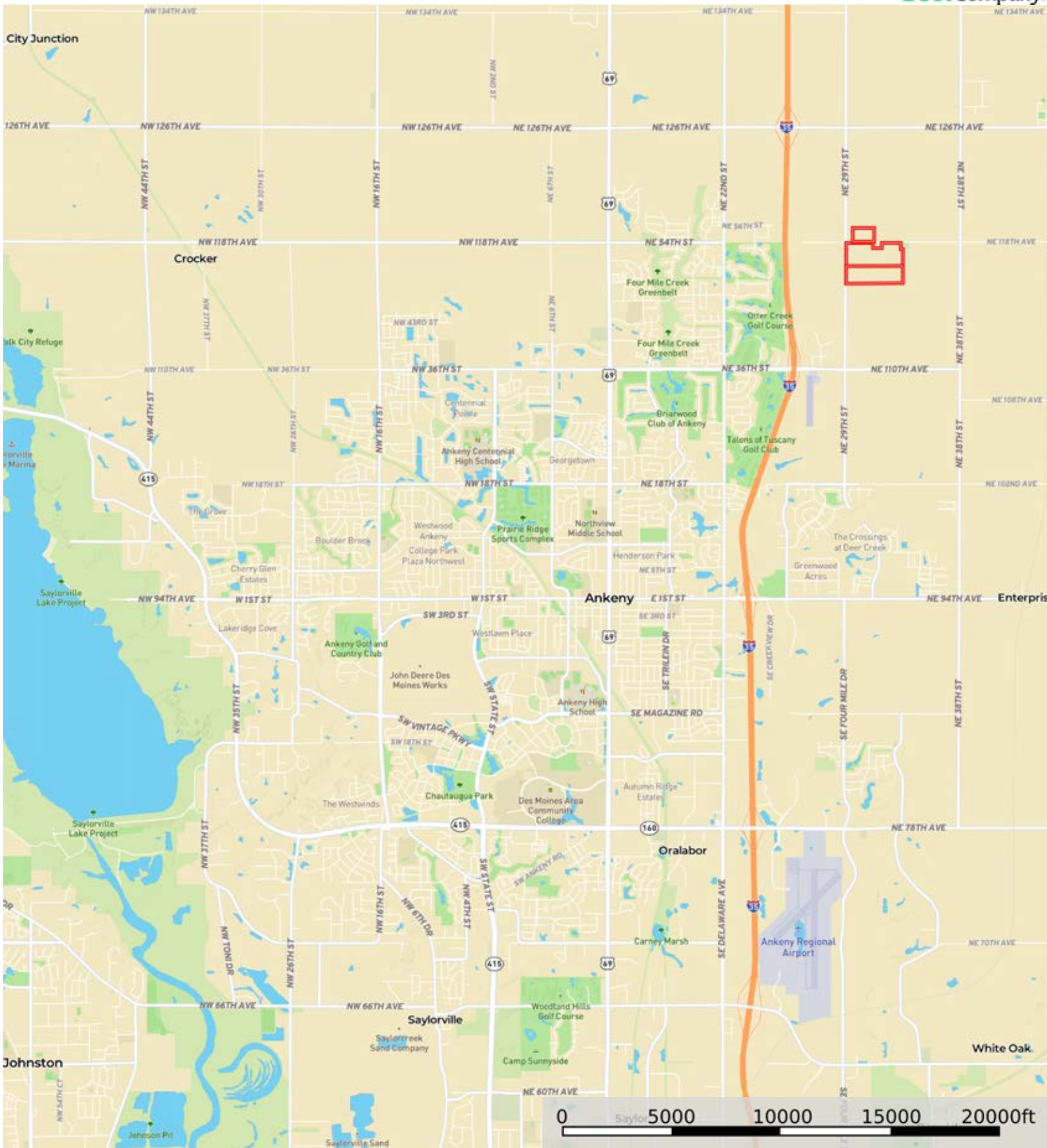
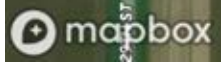
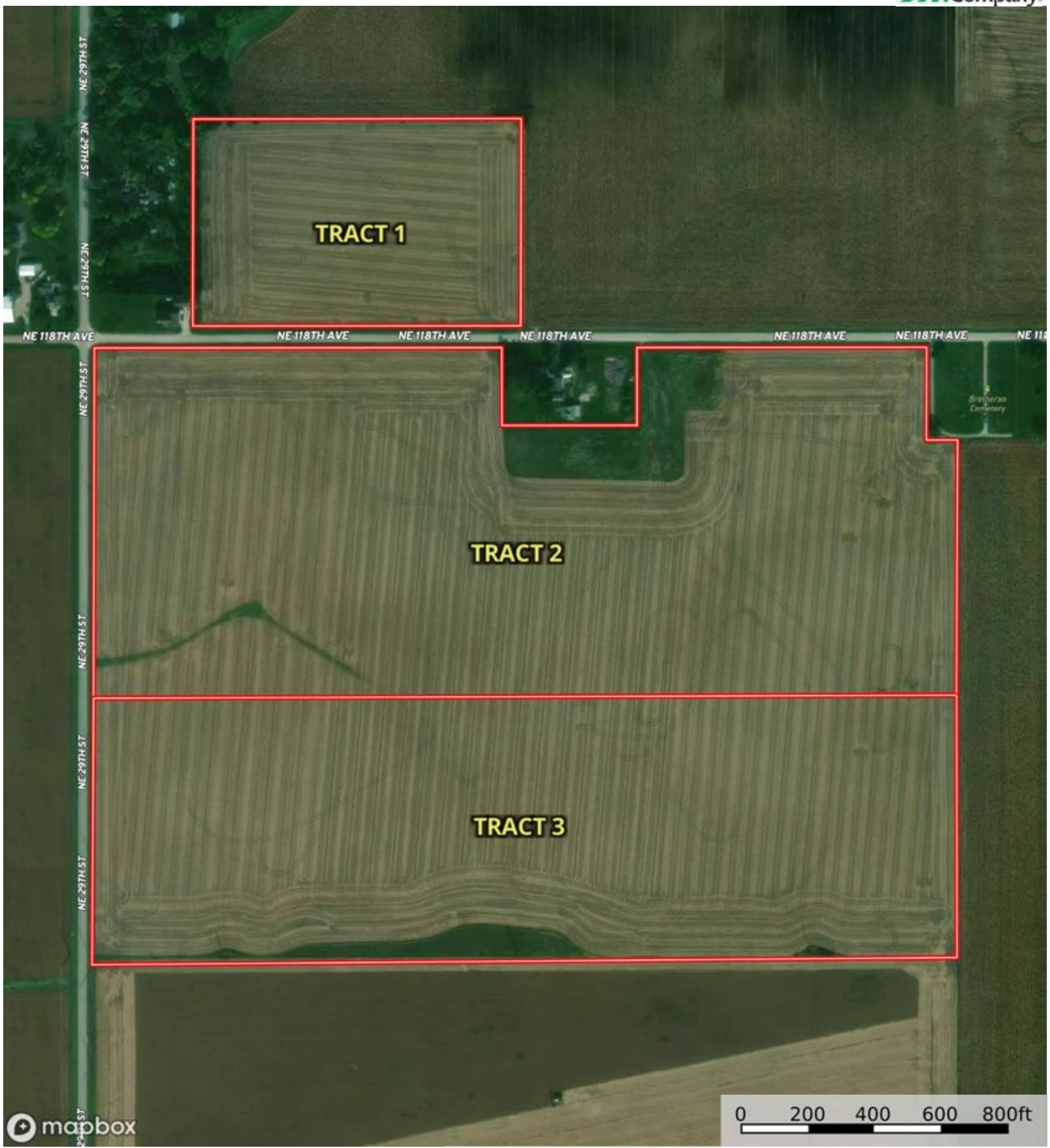


L-2400310 & L-2400311

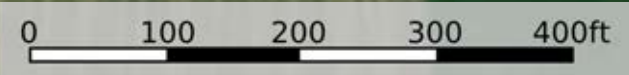
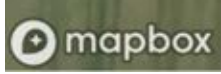
Polk County, Iowa, 121.1 AC +/-



Boundary



 Boundary



 Boundary

|  Boundary 14.18 ac

SOIL CODE	SOIL DESCRIPTION	ACRES	%	CSR2	CPI	NCCPI	CAP
L138B	Clarion loam, Bemis moraine, 2 to 6 percent slopes	8.85	62.46	88.0	0	80	2e
L507	Canisteo clay loam, Bemis moraine, 0 to 2 percent slopes	3.72	26.25	87.0	0	81	2w
828C2	Zenor sandy loam, 5 to 9 percent slopes, moderately eroded	1.61	11.36	43.0	0	41	3e
TOTALS		14.18(*)	100%	82.69	-	75.89	2.11

(*) Total acres may differ in the second decimal compared to the sum of each acreage soil. This is due to a round error because we only show the acres of each soil with two decimal.





|  Boundary 60.06 ac

SOIL CODE	SOIL DESCRIPTION	ACRES	%	CSR2	CPI	NCCPI	CAP
L507	Canisteo clay loam, Bemis moraine, 0 to 2 percent slopes	24.18	40.25	87.0	0	81	2w
L138B	Clarion loam, Bemis moraine, 2 to 6 percent slopes	19.84	33.02	88.0	0	80	2e
6	Okoboji silty clay loam, 0 to 1 percent slopes	4.77	7.94	59.0	0	76	3w
L95	Harps clay loam, Bemis moraine, 0 to 2 percent slopes	4.11	6.84	75.0	0	81	2w
L107	Webster clay loam, Bemis moraine, 0 to 2 percent slopes	3.67	6.11	88.0	0	84	2w
L138C2	Clarion loam, Bemis moraine, 6 to 10 percent slopes, moderately eroded	1.97	3.28	83.0	0	62	3e
L55	Nicollet loam, 1 to 3 percent slopes	1.52	2.53	91.0	0	85	1
TOTALS		60.06(*)	100%	84.29	-	79.91	2.09

(*) Total acres may differ in the second decimal compared to the sum of each acreage soil. This is due to a round error because we only show the acres of each soil with two decimal.



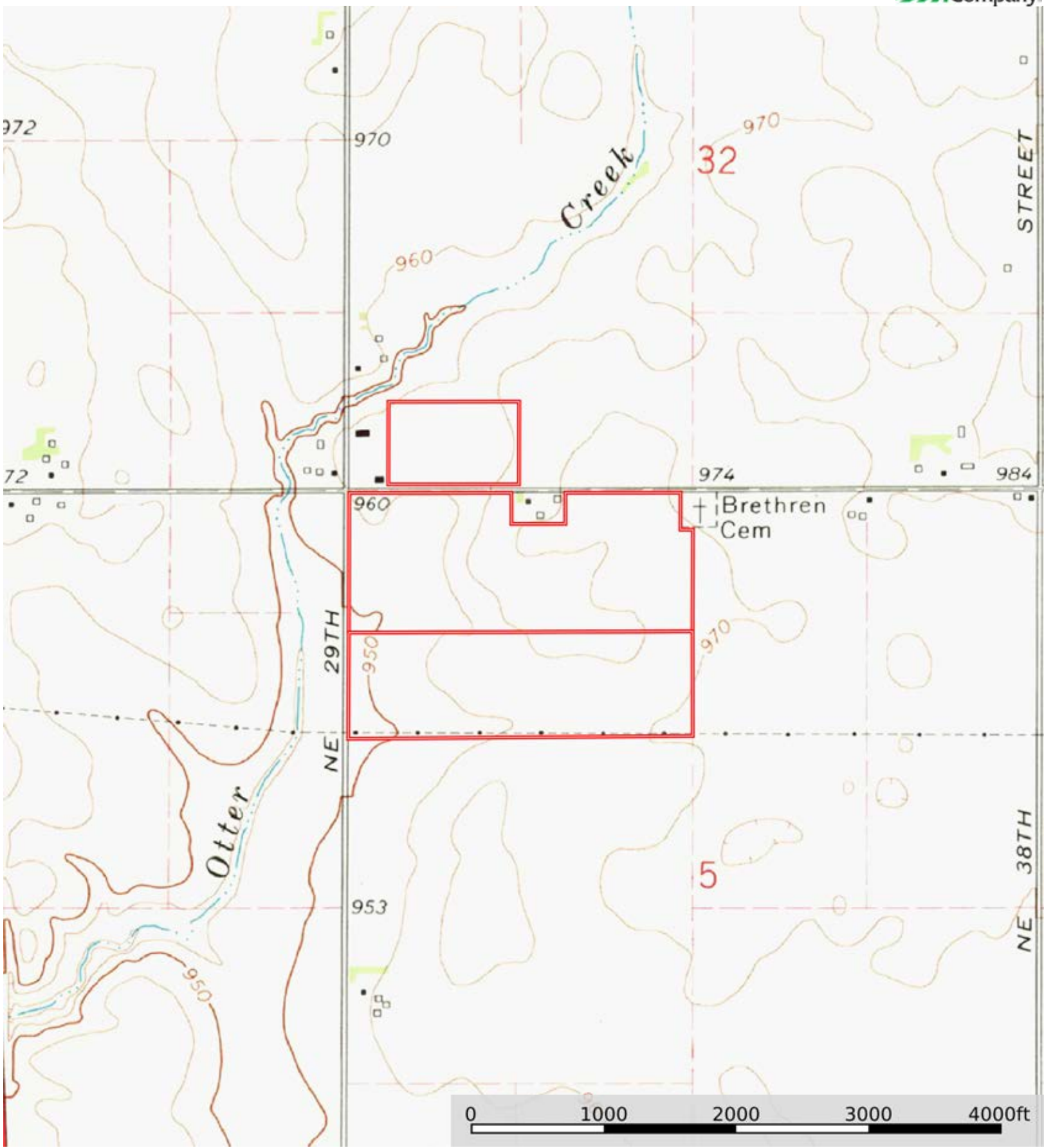


|  Boundary 47.68 ac

SOIL CODE	SOIL DESCRIPTION	ACRES	%	CSR2	CPI	NCCPI	CAP
L107	Webster clay loam, Bemis moraine, 0 to 2 percent slopes	30.14	63.2	88.0	0	84	2w
L138B	Clarion loam, Bemis moraine, 2 to 6 percent slopes	10.35	21.7	88.0	0	80	2e
L507	Canisteo clay loam, Bemis moraine, 0 to 2 percent slopes	4.73	9.92	87.0	0	81	2w
L55	Nicollet loam, 1 to 3 percent slopes	2.46	5.16	91.0	0	85	1
TOTALS		47.68(*)	100%	88.04	-	82.87	1.95

(*) Total acres may differ in the second decimal compared to the sum of each acreage soil. This is due to a round error because we only show the acres of each soil with two decimal.





 Boundary