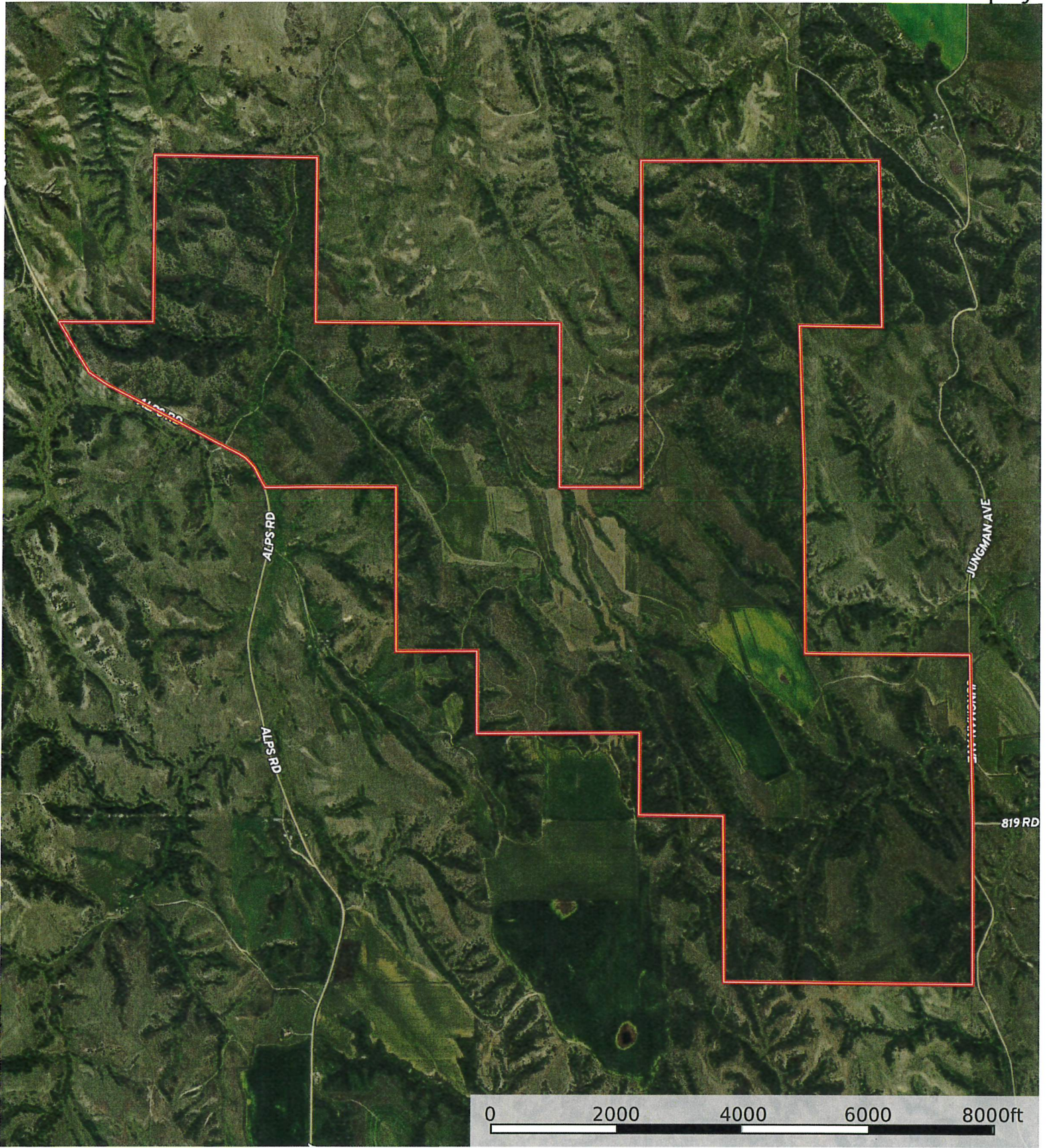
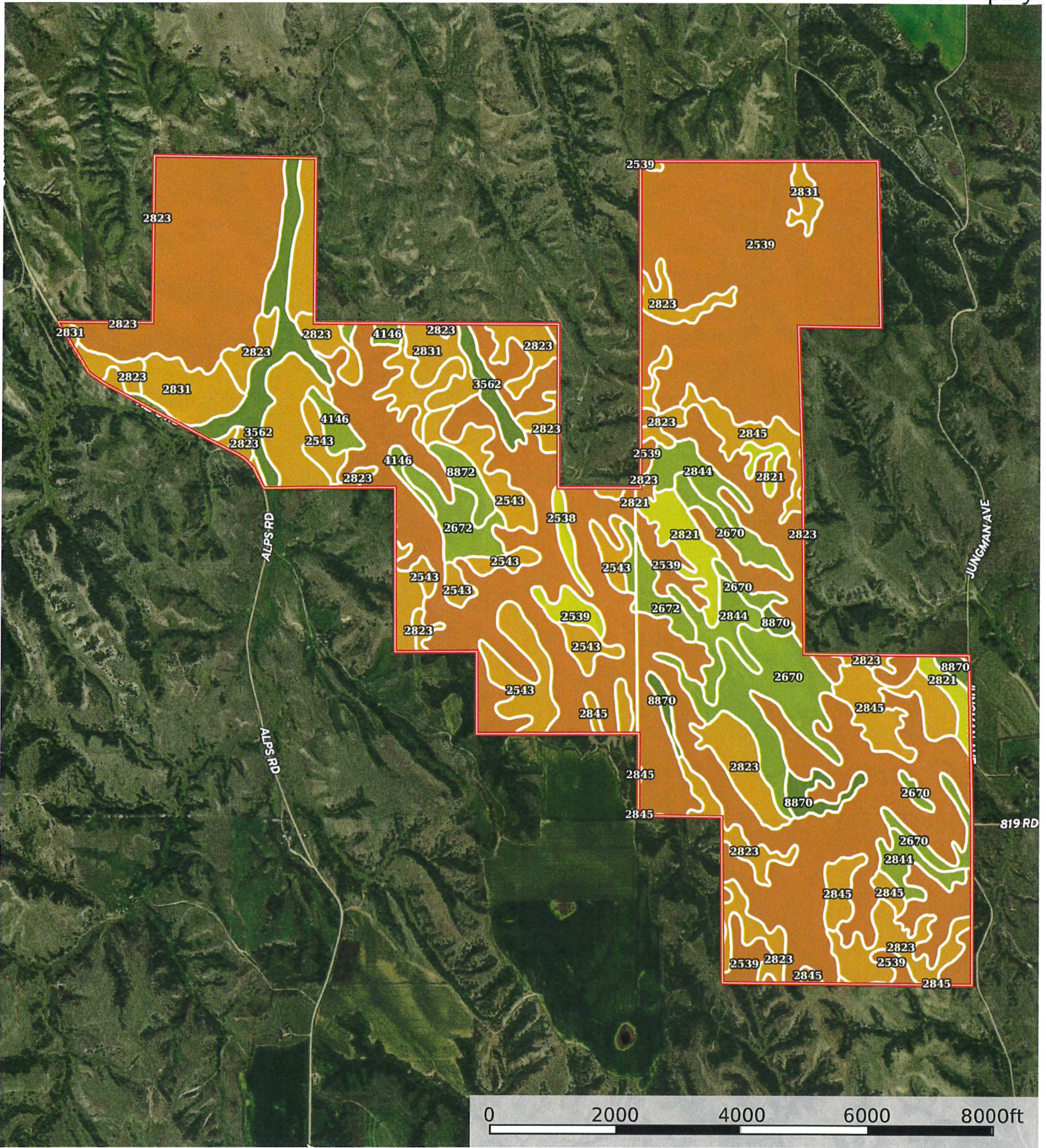


L-2400327

Custer County, Valley County, Nebraska, 1990.11 AC +/-



 Boundary



 Boundary

|  Boundary 1944.7 ac

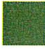




| SOIL CODE | SOIL DESCRIPTION | ACRES | % | CPI | NCCPI | CAP |
|-----------|--|-----------|-------|-----|-------|------|
| 2539 | Coly-Hobbs silt loams, 3 to 60 percent slopes | 1094.53 | 56.28 | 0 | 24 | 7e |
| 2823 | Uly silt loam, 11 to 17 percent slopes, eroded | 190.04 | 9.77 | 0 | 61 | 6e |
| 2831 | Uly-Coly silt loams, 17 to 30 percent slopes, eroded | 127.31 | 6.55 | 0 | 49 | 6e |
| 2670 | Holdrege silt loam, 3 to 7 percent slopes | 100.54 | 5.17 | 0 | 73 | 3e |
| 2543 | Coly silt loam, 11 to 17 percent slopes, eroded, cool | 91.12 | 4.69 | 0 | 53 | 6e |
| 2845 | Uly-Coly silt loams, 11 to 17 percent slopes, eroded | 79.24 | 4.07 | 0 | 58 | 6e |
| 3562 | Hobbs silt loam, occasionally flooded, cool | 58.98 | 3.03 | 0 | 74 | 2w |
| 2844 | Uly-Coly silt loams, 6 to 11 percent slopes, eroded | 55.52 | 2.85 | 0 | 63 | 3e |
| 2672 | Holdrege silty clay loam, 3 to 7 percent slopes, eroded | 40.37 | 2.08 | 0 | 63 | 3e |
| 2821 | Uly silt loam, 6 to 11 percent slopes, eroded | 38.83 | 2.0 | 0 | 63 | 4e |
| 8870 | Hord silt loam, 1 to 3 percent slopes | 22.39 | 1.15 | 0 | 75 | 2e |
| 4146 | Holdrege silty clay loam, 7 to 11 percent slopes, eroded | 17.69 | 0.91 | 0 | 62 | 3e |
| 8872 | Hord silt loam, 3 to 6 percent slopes | 11.78 | 0.61 | 0 | 62 | 3e |
| 4138 | Holdrege silt loam, 7 to 11 percent slopes | 9.64 | 0.5 | 0 | 72 | 4e |
| 2538 | Coly silt loam, 6 to 11 percent slopes, eroded | 6.5 | 0.33 | 0 | 58 | 4e |
| 2668 | Holdrege silt loam, 1 to 3 percent slopes | 0.22 | 0.01 | 0 | 74 | 2e |
| TOTALS | | 1944.7(*) | 100% | - | 40.27 | 5.99 |

(*) Total acres may differ in the second decimal compared to the sum of each acreage soil. This is due to a round error because we only show the acres of each soil with two decimal.

Capability Legend

Increased Limitations and Hazards

Decreased Adaptability and Freedom of Choice Users

| Land, Capability |  |  |  |  |  |  |  |  |
|------------------|---|---|---|---|--|---|---|---|
| | 1 | 2 | 3 | 4 | 5 | 6 | 7 | 8 |
| 'Wild Life' | • | • | • | • | • | • | • | • |
| Forestry | • | • | • | • | • | • | • | |
| Limited | • | • | • | • | • | • | • | |
| Moderate | • | • | • | • | • | • | | |
| Intense | • | • | • | • | • | | | |
| Limited | • | • | • | • | | | | |
| Moderate | • | • | • | | | | | |
| Intense | • | • | | | | | | |
| Very Intense | • | | | | | | | |

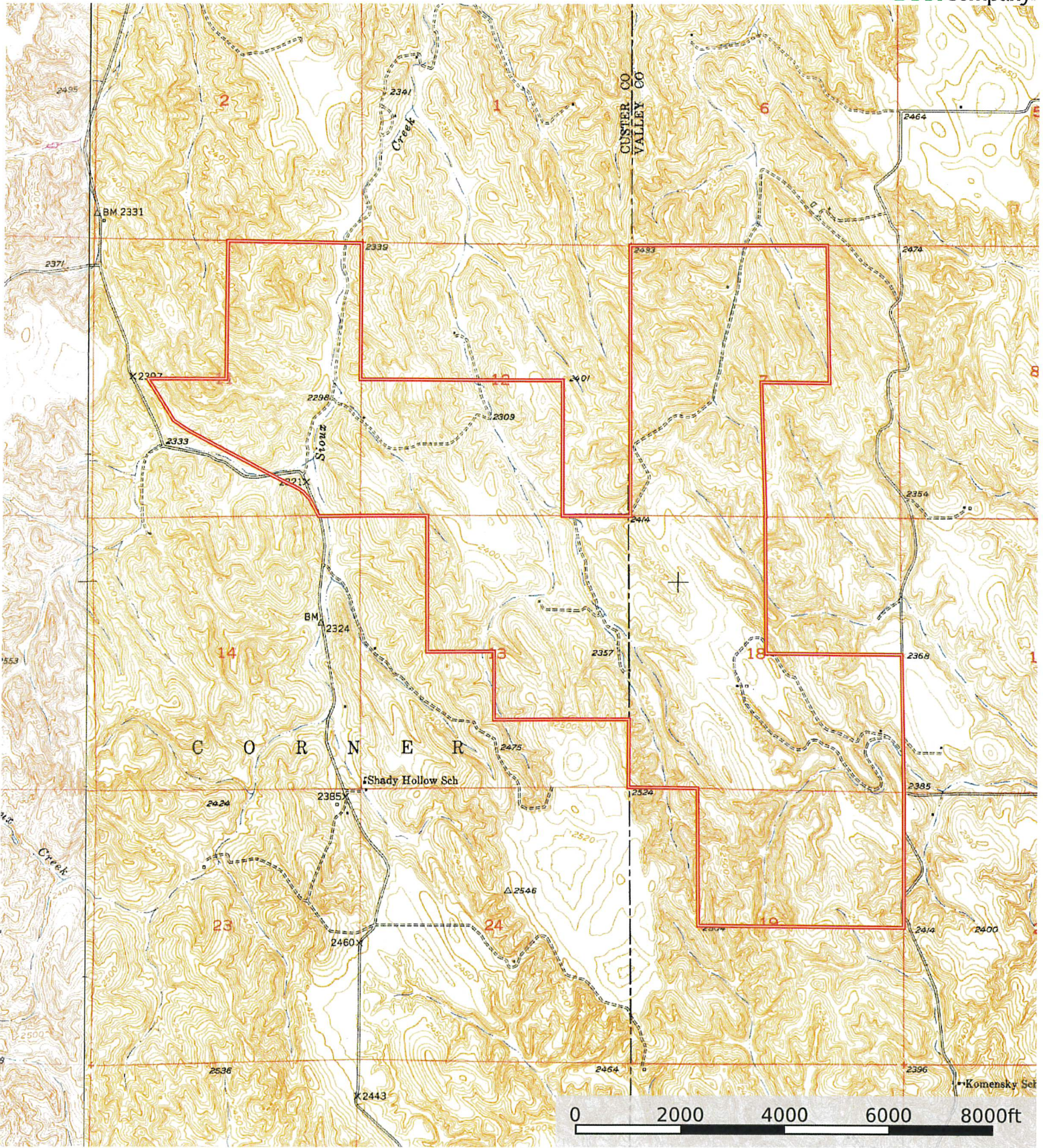
Grazing Cultivation

(c) climatic limitations (e) susceptibility to erosion

(s) soil limitations within the rooting zone (w) excess of water

L-2400327

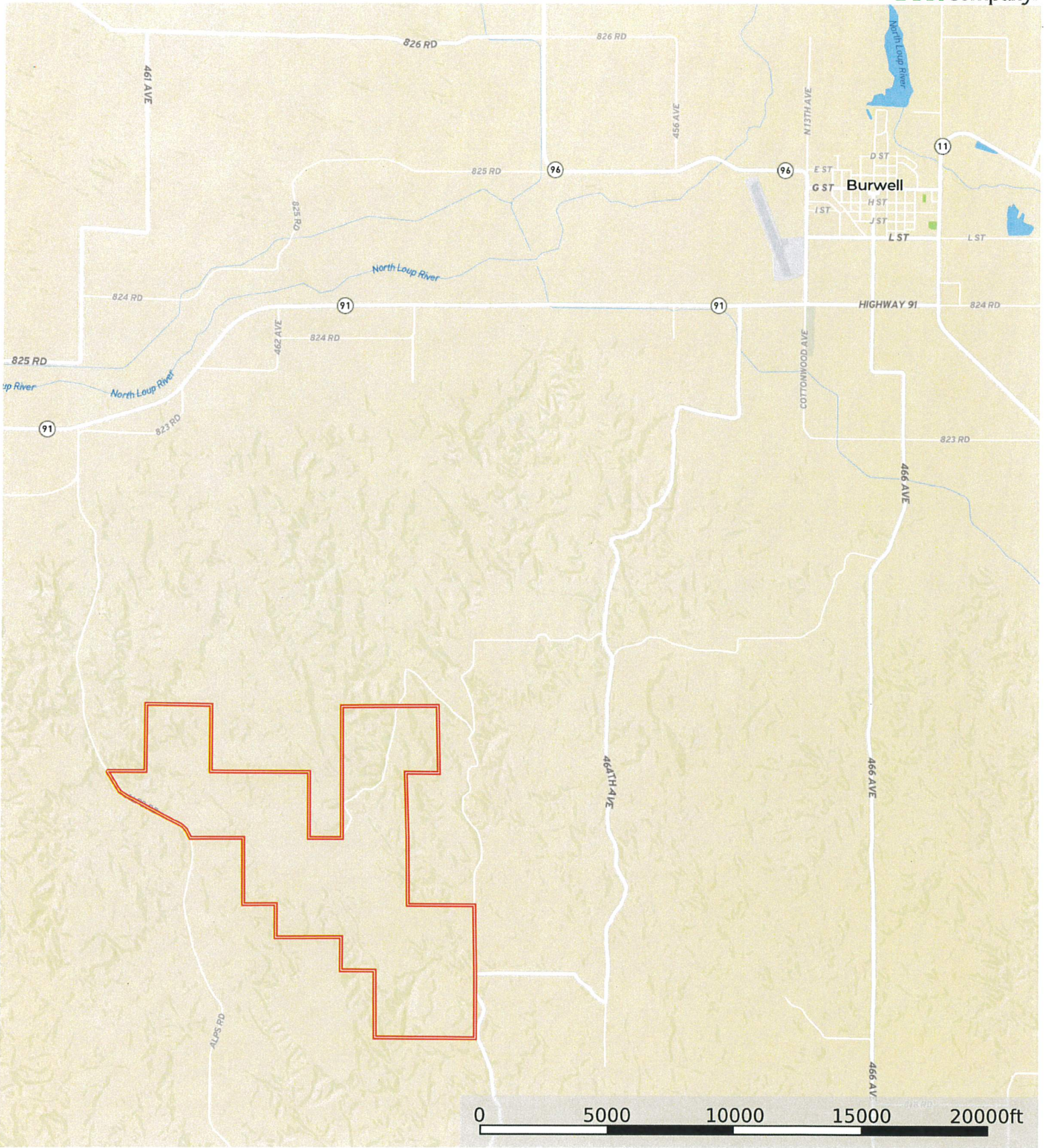
Custer County, Valley County, Nebraska, 1990.11 AC +/-



Boundary

L-2400327

Custer County, Valley County, Nebraska, 1990.11 AC +/-



Boundary