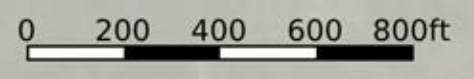
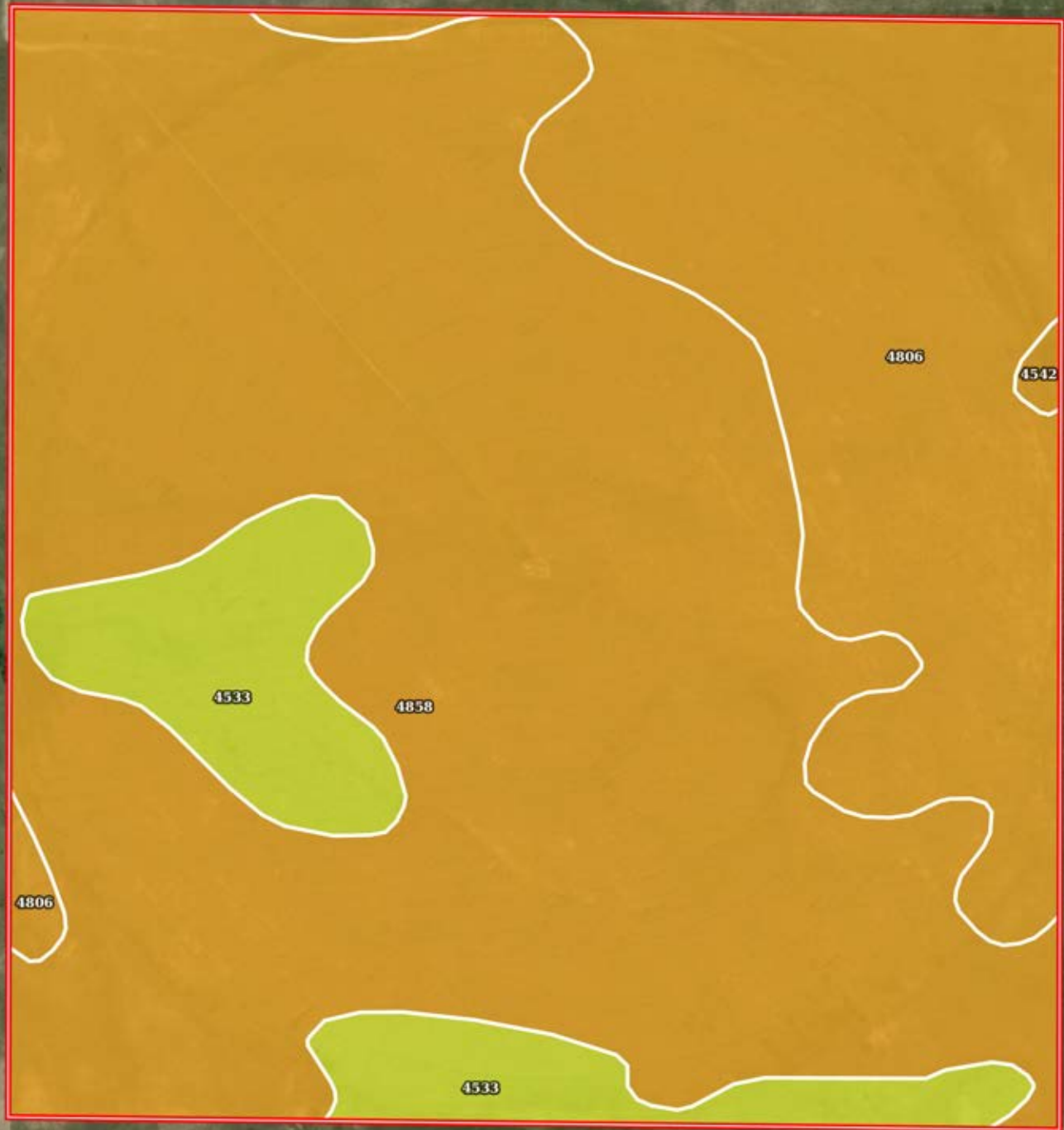

 Boundary





 Boundary



 Boundary

|  Boundary 169.73 ac

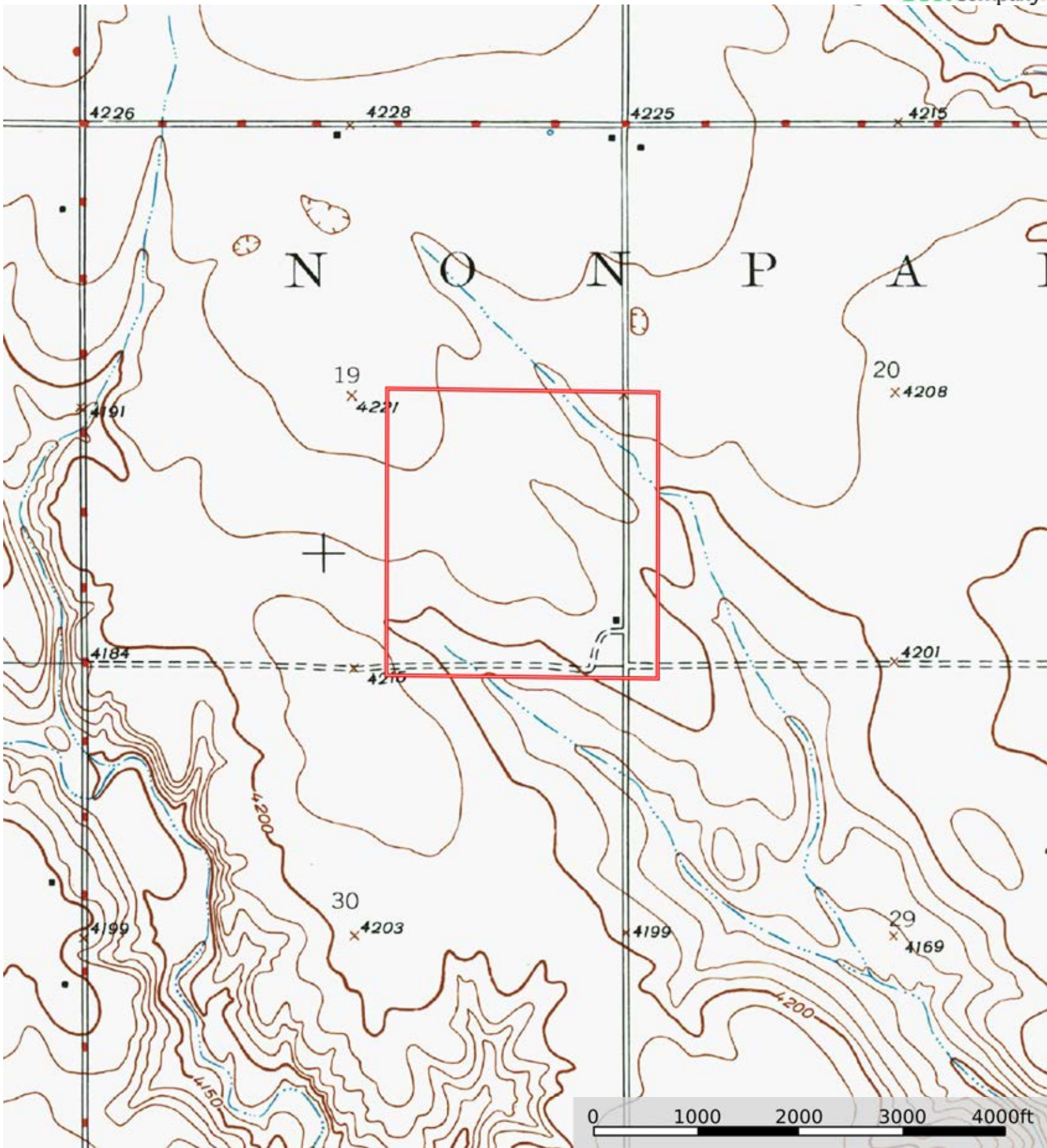
SOIL CODE	SOIL DESCRIPTION	ACRES	%	CPI	NCCPI	CAP
4858	Valentine-Els complex, moist, 0 to 9 percent slopes	110.58	65.15	0	29	6e
4806	Valentine fine sand, rolling, 9 to 24 percent slopes, moist	41.73	24.59	0	25	6e
4533	Els loamy sand, 0 to 3 percent slopes	16.98	10.0	0	30	4w
4542	Els-lpage complex, 0 to 3 percent slopes	0.44	0.26	0	26	6w
TOTALS		169.73(*)	100%	-	28.11	5.8

(\*) Total acres may differ in the second decimal compared to the sum of each acreage soil. This is due to a round error because we only show the acres of each soil with two decimal.



L-2400333

Holt County, Nebraska, 170.06 AC +/-



Boundary



The information contained herein was obtained from sources deemed to be reliable. Land id™ Services makes no warranties or guarantees as to the completeness or accuracy thereof.