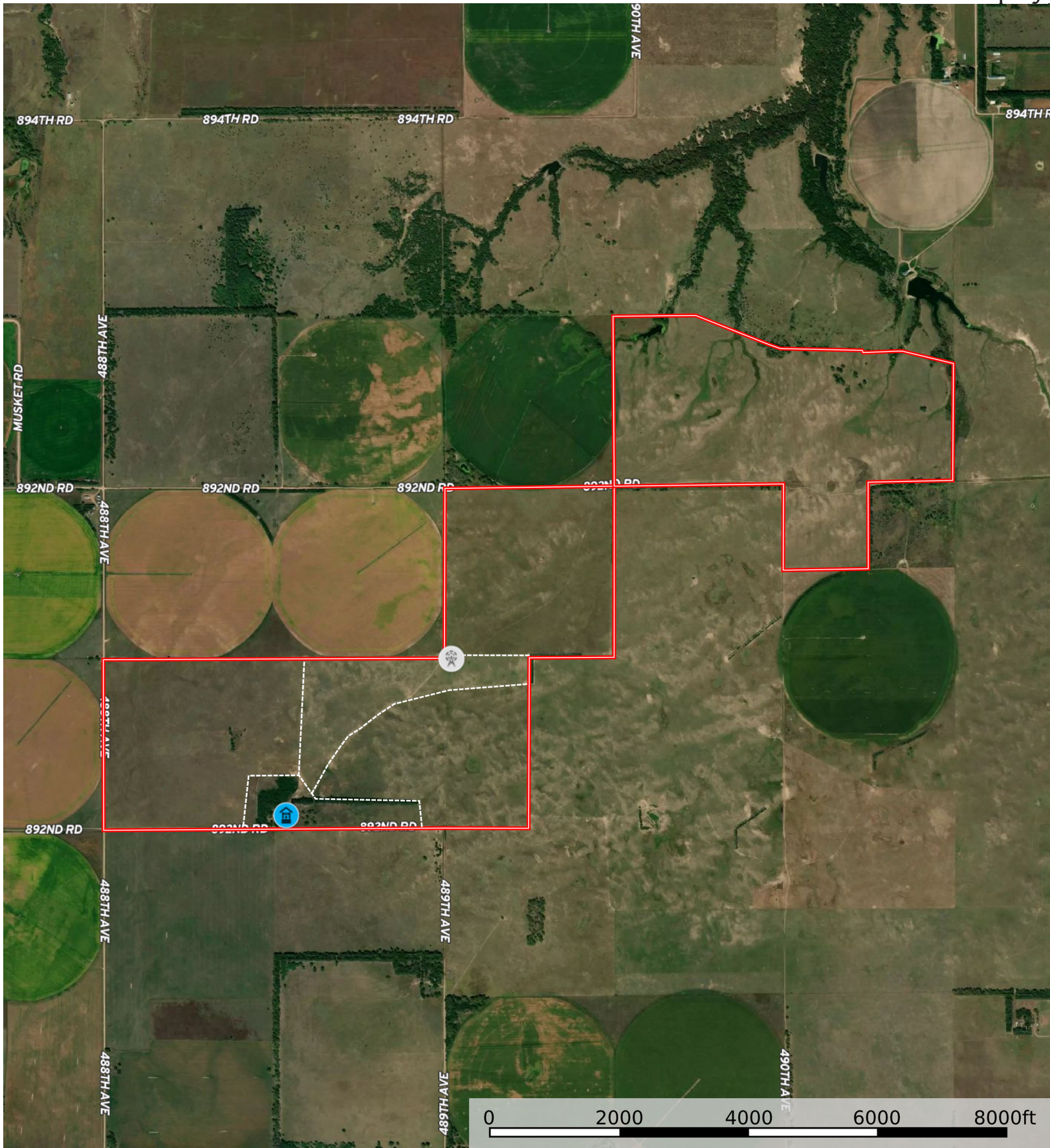


Boundary



-  Well
-  Windmill
-  Fence
-  Boundary





Boundary

|  All Polygons 870.92 ac

| SOIL CODE | SOIL DESCRIPTION   | ACRES         | %     | CPI  | NCCPI | CAP  |
|-----------|--|---------------|-------|------|-------|------|
| 4791      | Valentine fine sand, 3 to 9 percent slopes               | 272.8<br>6    | 31.33 | 0    | 22    | 6e   |
| 4796      | Valentine fine sand, 9 to 25 percent slopes              | 200.3<br>6    | 23.01 | 14   | 23    | 6e   |
| 4560      | Elsmere-lpage loamy fine sands, 0 to 3 percent slopes    | 136.0<br>3    | 15.62 | 0    | 33    | 4w   |
| 4871      | Valentine-Dunday loamy fine sands, 0 to 3 percent slopes | 66.94         | 7.69  | 0    | 34    | 4e   |
| 4781      | Valentine fine sand, 0 to 3 percent slopes               | 57.9          | 6.65  | 0    | 25    | 6e   |
| 4858      | Valentine-Els complex, moist, 0 to 9 percent slopes      | 47.2          | 5.42  | 0    | 29    | 6e   |
| 4542      | Els-lpage complex, 0 to 3 percent slopes                 | 26.44         | 3.04  | 0    | 26    | 6w   |
| 4650      | lpage loamy fine sand, 0 to 3 percent slopes             | 18.33         | 2.1   | 54   | 31    | 4e   |
| 3340      | Wewela fine sandy loam, 0 to 3 percent slopes            | 17.31         | 1.99  | 43   | 37    | 3e   |
| 8925      | Simeon loamy sand, 0 to 3 percent slopes                 | 12.44         | 1.43  | 0    | 25    | 6s   |
| 3225      | Labu-Sansarc silty clays, 9 to 35 percent slopes         | 10.07         | 1.16  | 33   | 25    | 6e   |
| 4215      | Blackloup loam, rarely flooded                           | 3.18          | 0.37  | 0    | 26    | 5w   |
| 4498      | Dunday loamy sand, 0 to 3 percent slopes                 | 1.86          | 0.21  | 0    | 36    | 4e   |
| TOTALS    |  | 870.9<br>2(*) | 100%  | 5.59 | 26.18 | 5.42 |

(\*) Total acres may differ in the second decimal compared to the sum of each acreage soil. This is due to a round error because we only show the acres of each soil with two decimal.

| Boundary 312.1 ac

| SOIL CODE | SOIL DESCRIPTION                                      | ACRES        | %     | CPI  | NCCPI | CAP  |
|-----------|---|--------------|-------|------|-------|------|
| 4560      | Elsmere-lpage loamy fine sands, 0 to 3 percent slopes | 113.8<br>3   | 36.47 | 0    | 33    | 4w   |
| 4791      | Valentine fine sand, 3 to 9 percent slopes            | 73.39        | 23.51 | 0    | 22    | 6e   |
| 4858      | Valentine-Els complex, moist, 0 to 9 percent slopes   | 47.2         | 15.12 | 0    | 29    | 6e   |
| 4542      | Els-lpage complex, 0 to 3 percent slopes              | 26.44        | 8.47  | 0    | 26    | 6w   |
| 4796      | Valentine fine sand, 9 to 25 percent slopes           | 17.67        | 5.66  | 14   | 23    | 6e   |
| 3340      | Wewela fine sandy loam, 0 to 3 percent slopes         | 17.31        | 5.55  | 43   | 37    | 3e   |
| 3225      | Labu-Sansarc silty clays, 9 to 35 percent slopes      | 10.07        | 3.23  | 33   | 25    | 6e   |
| 4215      | Blackloup loam, rarely flooded                        | 3.18         | 1.02  | 0    | 26    | 5w   |
| 4781      | Valentine fine sand, 0 to 3 percent slopes            | 3.01         | 0.96  | 0    | 25    | 6e   |
| TOTALS    |   | 312.1(<br>*) | 100%  | 4.24 | 28.46 | 5.09 |

(\*) Total acres may differ in the second decimal compared to the sum of each acreage soil. This is due to a round error because we only show the acres of each soil with two decimal.

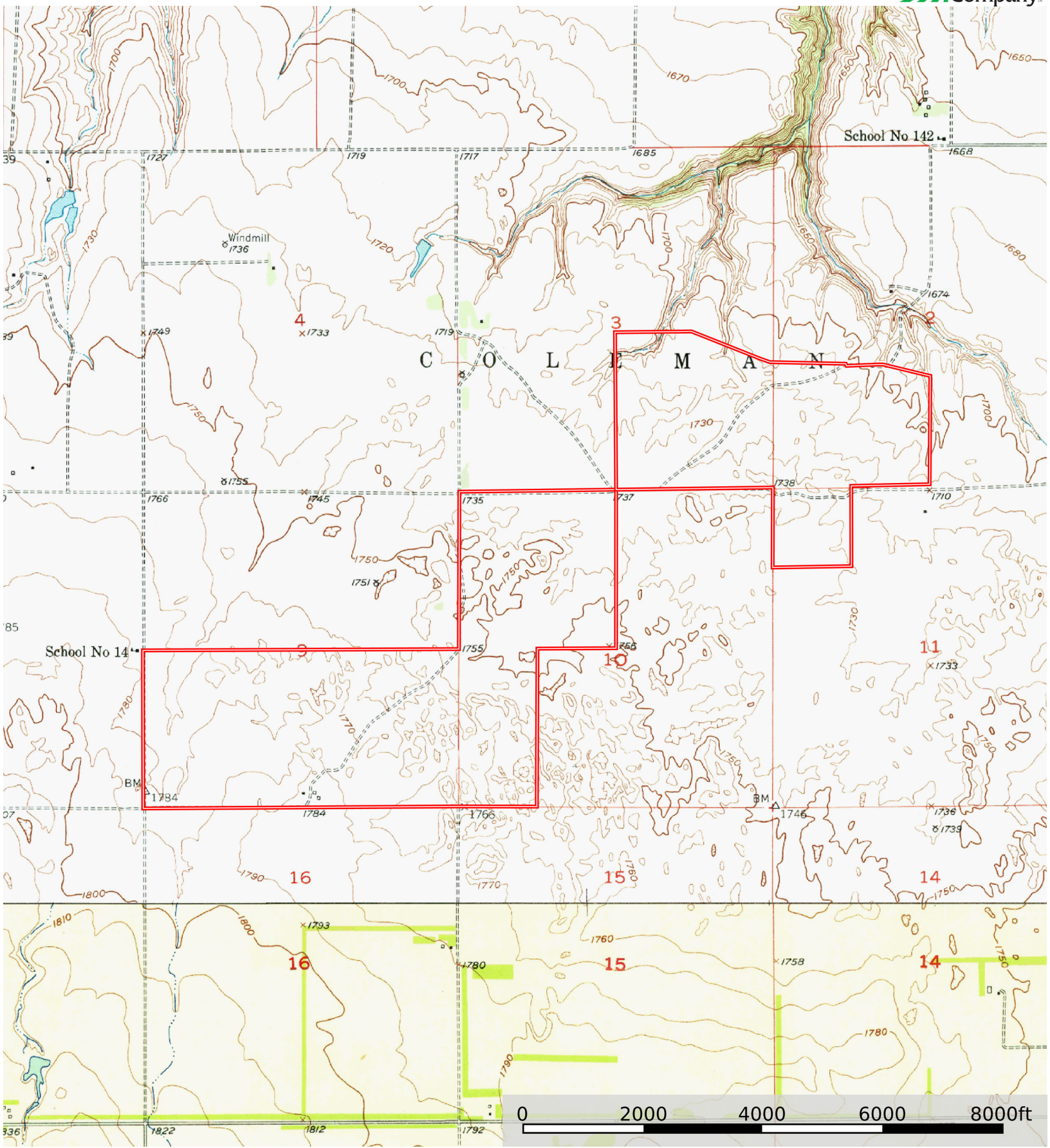


| Boundary 558.82 ac

| SOIL CODE | SOIL DESCRIPTION   | ACRES     | %     | CPI  | NCCPI | CAP  |
|-----------|--|-----------|-------|------|-------|------|
| 4791      | Valentine fine sand, 3 to 9 percent slopes               | 199.47    | 35.7  | 0    | 22    | 6e   |
| 4796      | Valentine fine sand, 9 to 25 percent slopes              | 182.69    | 32.69 | 14   | 23    | 6e   |
| 4871      | Valentine-Dunday loamy fine sands, 0 to 3 percent slopes | 66.94     | 11.98 | 0    | 34    | 4e   |
| 4781      | Valentine fine sand, 0 to 3 percent slopes               | 54.89     | 9.82  | 0    | 25    | 6e   |
| 4560      | Elsmere-lpage loamy fine sands, 0 to 3 percent slopes    | 22.2      | 3.97  | 0    | 33    | 4w   |
| 4650      | lpage loamy fine sand, 0 to 3 percent slopes             | 18.33     | 3.28  | 54   | 31    | 4e   |
| 8925      | Simeon loamy sand, 0 to 3 percent slopes                 | 12.44     | 2.23  | 0    | 25    | 6s   |
| 4498      | Dunday loamy sand, 0 to 3 percent slopes                 | 1.86      | 0.33  | 0    | 36    | 4e   |
| TOTALS    |  | 558.82(*) | 100%  | 6.35 | 24.91 | 5.61 |

(\*) Total acres may differ in the second decimal compared to the sum of each acreage soil. This is due to a round error because we only show the acres of each soil with two decimal.





Boundary