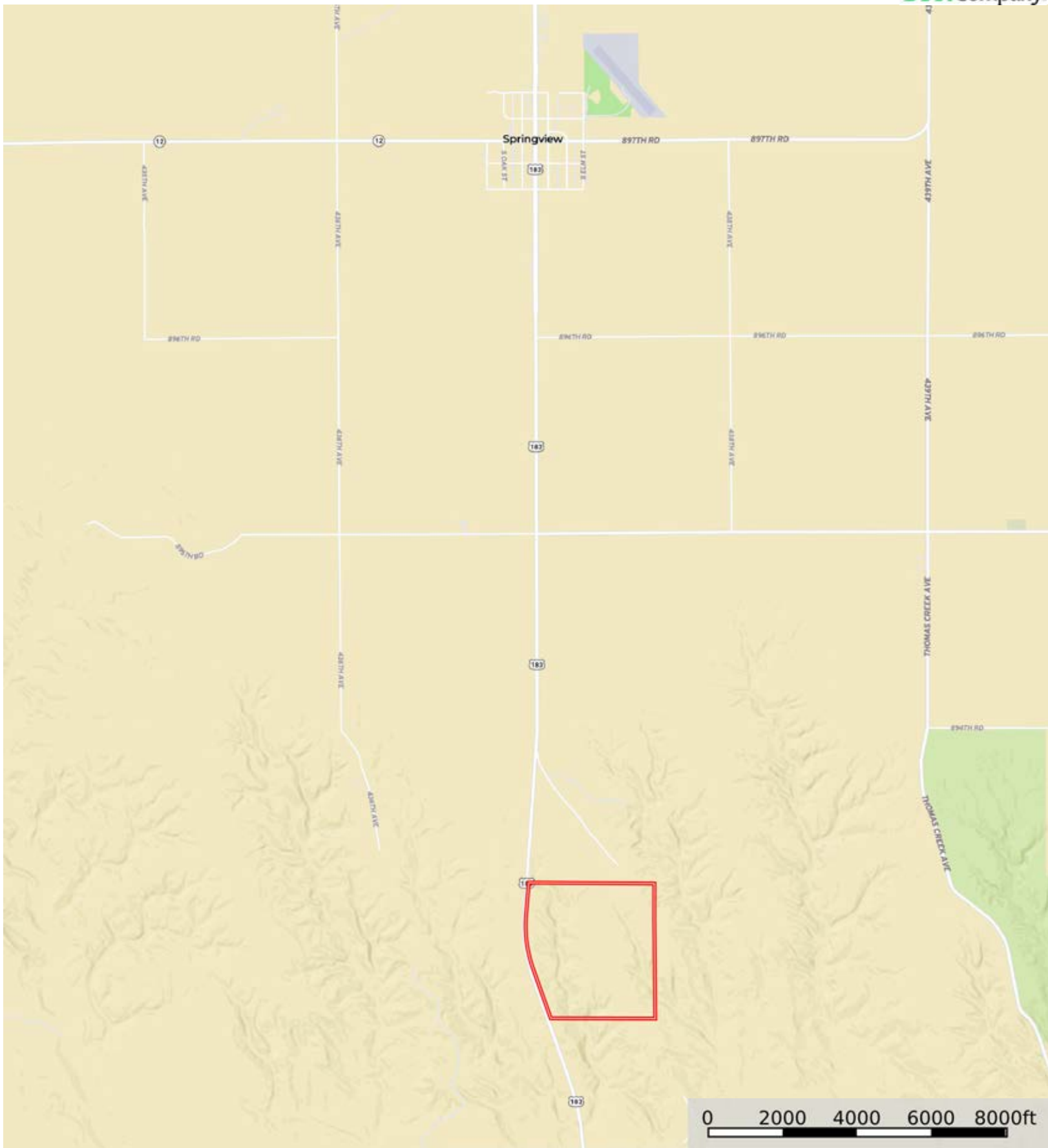


L-2400344

Keya Paha County, Nebraska, 275 AC +/-



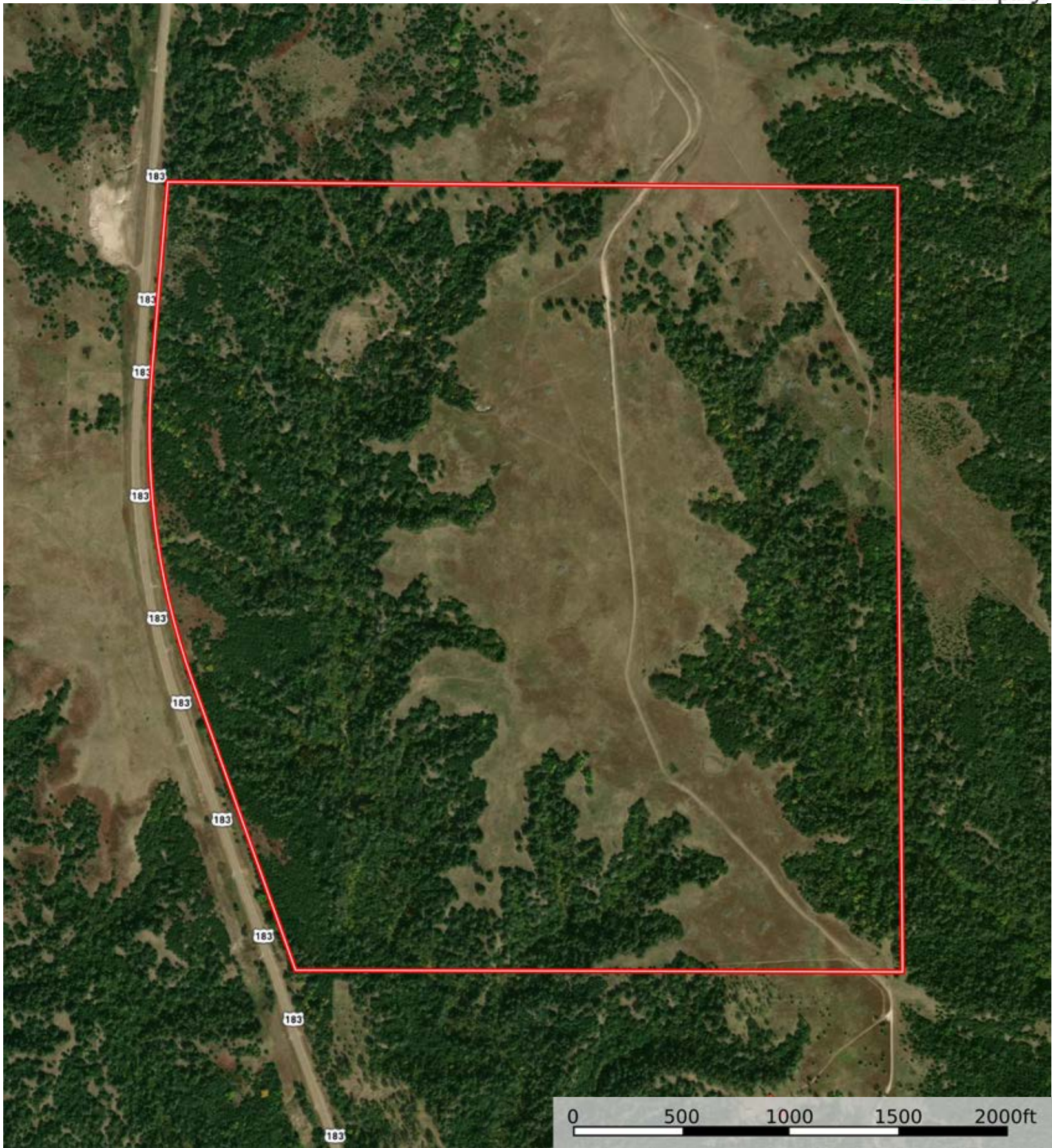
Boundary



The information contained herein was obtained from sources deemed to be reliable. Land id™ Services makes no warranties or guarantees as to the completeness or accuracy thereof.

L-2400344

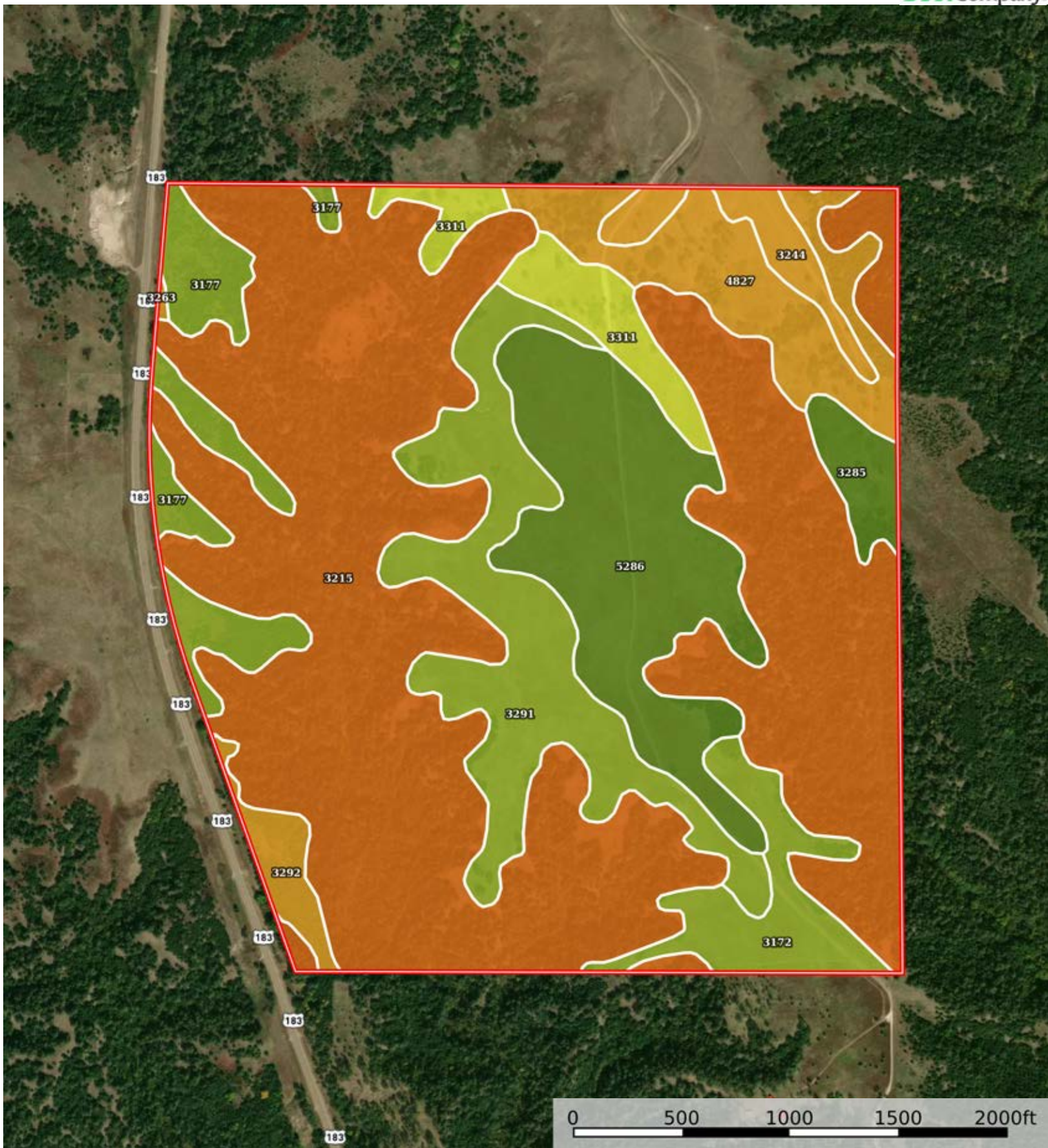
Keya Paha County, Nebraska, 275 AC +/-



Boundary



The information contained herein was obtained from sources deemed to be reliable. Land id™ Services makes no warranties or guarantees as to the completeness or accuracy thereof.



Boundary

| Boundary 274.31 ac

SOIL CODE	SOIL DESCRIPTION	ACRES	%	CPI	NCCPI	CAP
3215	Longpine-Ronson-Duda complex, 15 to 70 percent slopes	148.14	54.01	0	13	7s
5286	Vetal loam, 1 to 3 percent slopes	32.87	11.98	0	56	2e
3291	Paka-Mariaville loams, 2 to 6 percent slopes	29.34	10.7	0	44	3e
4827	Valentine loamy fine sand, gently rolling	17.26	6.29	0	23	6e
3177	Holt variant fine sandy loam, 3 to 6 percent slopes	13.58	4.95	0	45	3e
3172	Holt-Longpine fine sandy loams, 3 to 6 percent slopes	10.7	3.9	0	26	3e
3311	Ronson-Anselmo fine sandy loams, 6 to 11 percent slopes	8.91	3.25	0	42	4e
3244	Meadin gravelly sandy loam, 2 to 30 percent slopes	5.22	1.9	0	29	6s
3285	Paka loam, 0 to 2 percent slopes	4.33	1.58	0	56	2c
3292	Paka-Mariaville loams, 11 to 30 percent slopes	3.78	1.38	0	28	6e
3263	Oneill fine sandy loam, 6 to 11 percent slopes	0.18	0.07	0	39	6e
TOTALS		274.31(*)	100%	-	26.34	5.35









(*) Total acres may differ in the second decimal compared to the sum of each acreage soil. This is due to a round error because we only show the acres of each soil with two decimal.

Capability Legend

Increased Limitations and Hazards

Decreased Adaptability and Freedom of Choice Users

Land, Capability

								
	1	2	3	4	5	6	7	8
'Wild Life'	•	•	•	•	•	•	•	•
Forestry	•	•	•	•	•	•	•	
Limited	•	•	•	•	•	•	•	
Moderate	•	•	•	•	•	•		
Intense	•	•	•	•	•			
Limited	•	•	•	•				
Moderate	•	•	•					
Intense	•	•						
Very Intense	•							

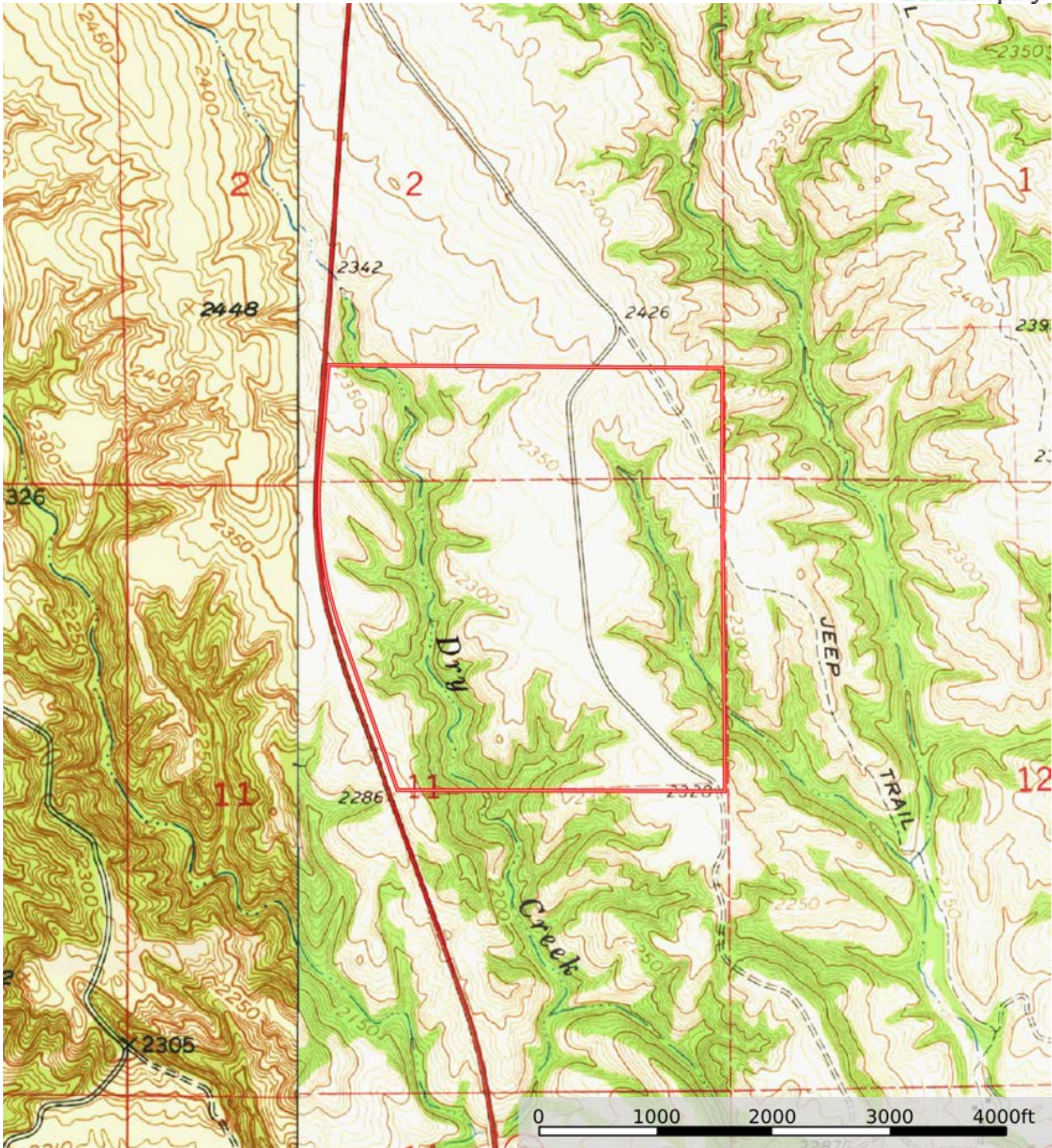
Grazing Cultivation

(c) climatic limitations (e) susceptibility to erosion

(s) soil limitations within the rooting zone (w) excess of water

L-2400344

Keya Paha County, Nebraska, 275 AC +/-



Boundary