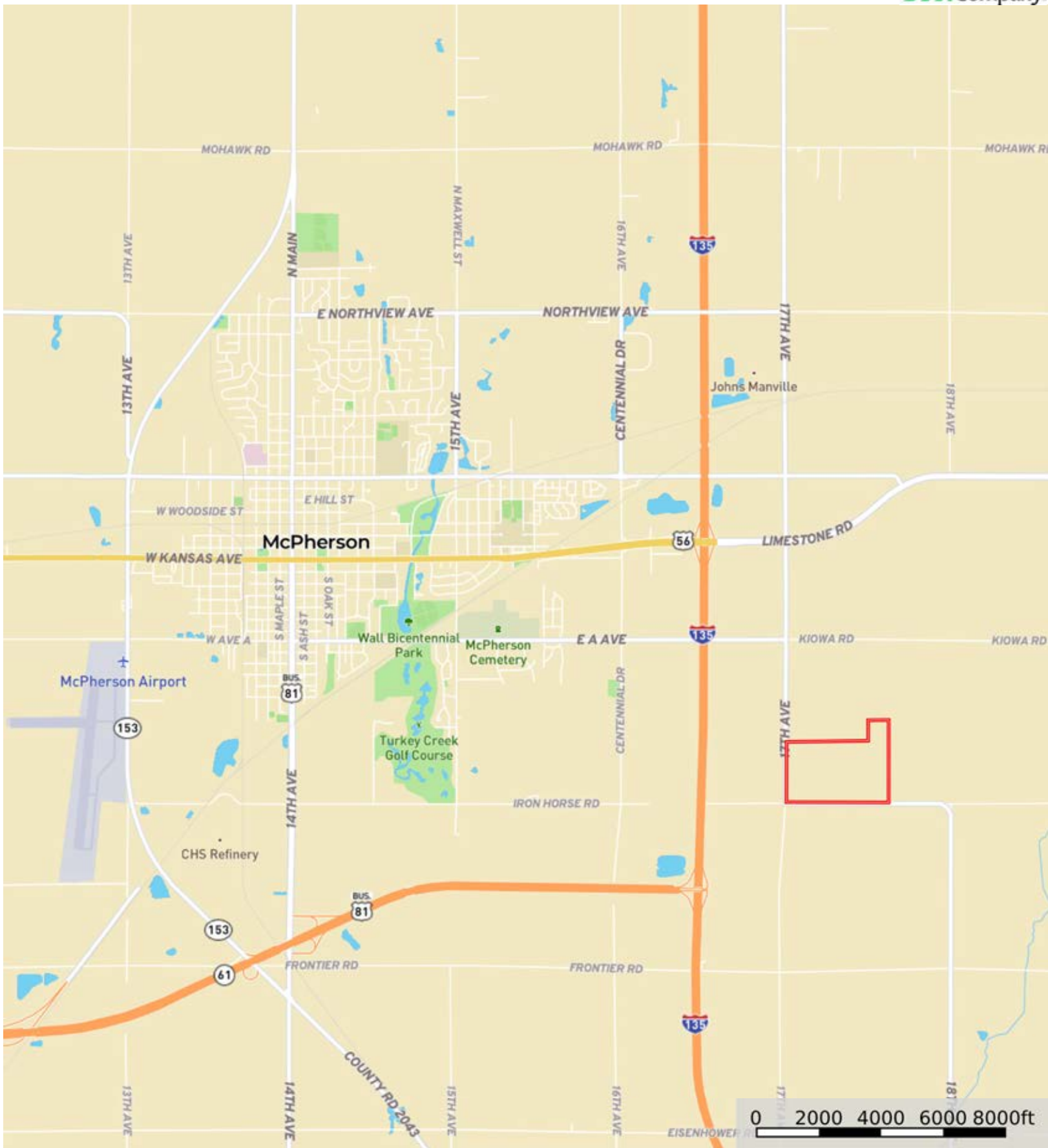


L-2400348

McPherson County, Kansas, 163.07 AC +/-



Boundary



The information contained herein was obtained from sources deemed to be reliable. Land id™ Services makes no warranties or guarantees as to the completeness or accuracy thereof.



Boundary



L-2400348

McPherson County, Kansas, 163.07 AC +/-



Boundary



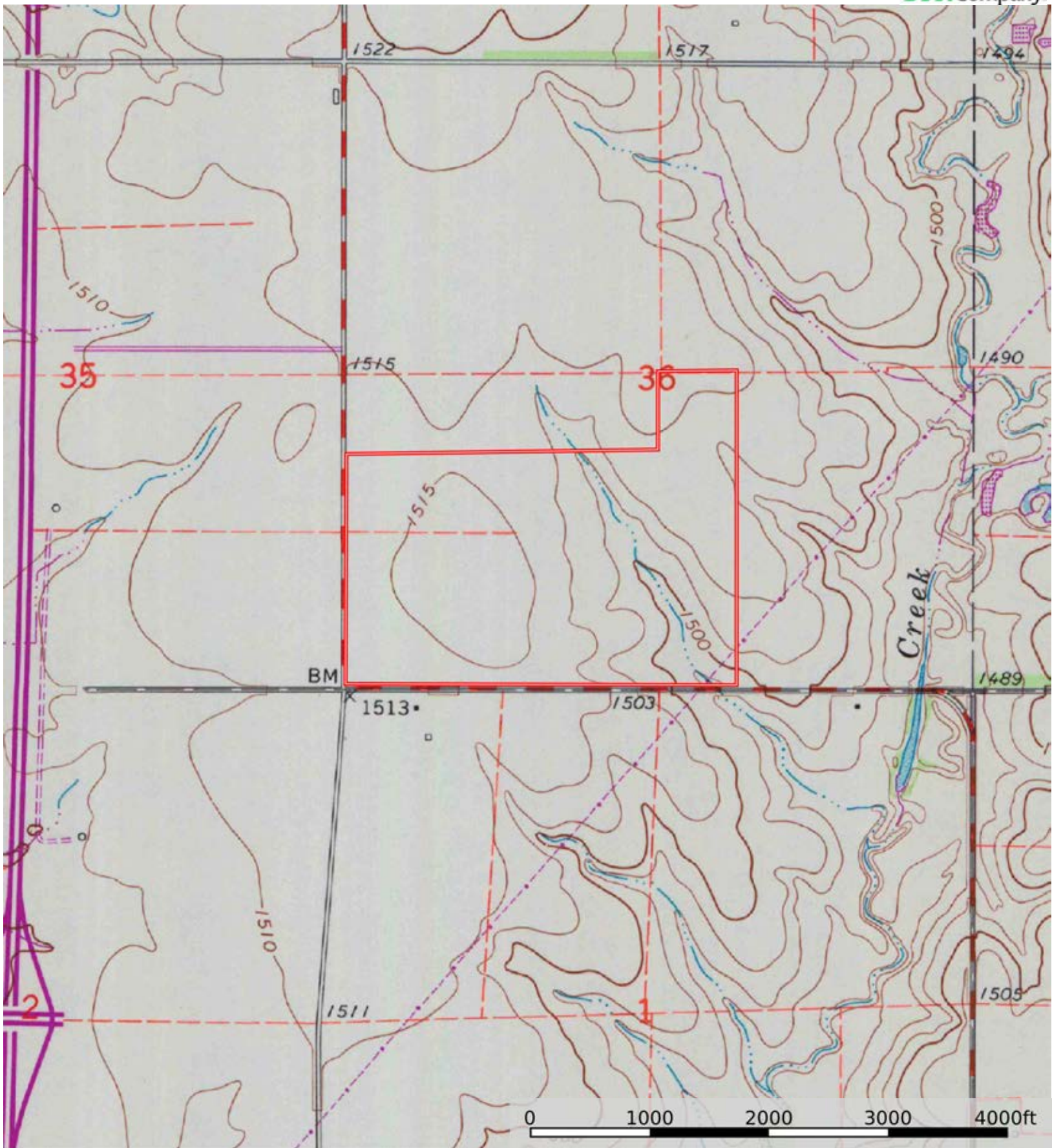
The information contained herein was obtained from sources deemed to be reliable. Land id™ Services makes no warranties or guarantees as to the completeness or accuracy thereof.

| Boundary 158.55 ac

SOIL CODE	SOIL DESCRIPTION	ACRES	%	CPI	NCCPI	CAP
3800	Crete silt loam, 0 to 1 percent slopes, loess plains and breaks	111.06	70.05	0	65	2s
3801	Crete silt loam, 1 to 3 percent slopes, loess plains and breaks	35.39	22.32	0	63	2e
3921	Smolan silty clay loam, 1 to 3 percent slopes	12.1	7.63	0	65	2e
TOTALS		158.55(*)	100%	-	64.55	2.0

(\*) Total acres may differ in the second decimal compared to the sum of each acreage soil. This is due to a round error because we only show the acres of each soil with two decimal.





Boundary

