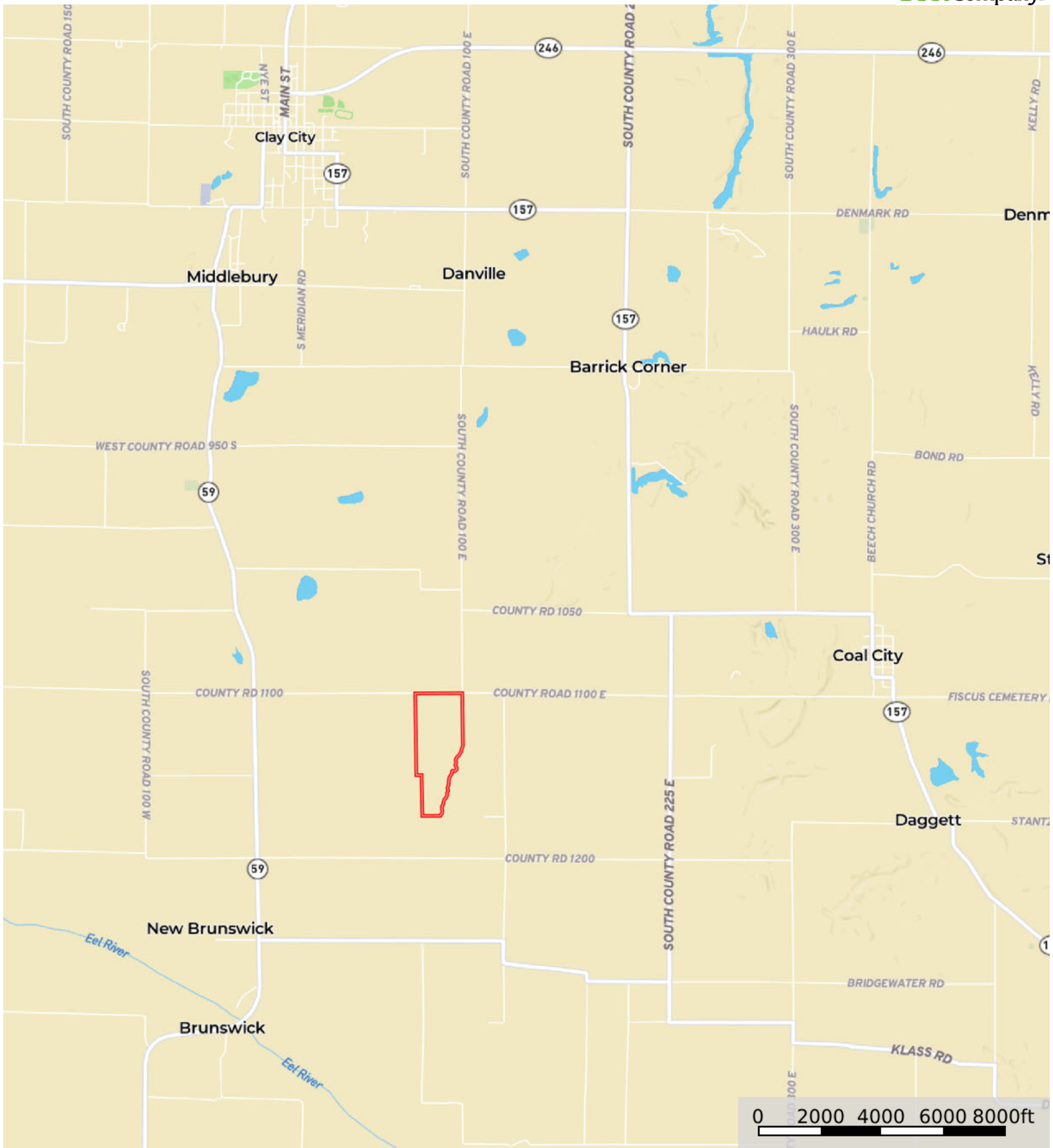
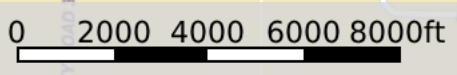


L-2400356

Clay County, Indiana, 116.99 AC +/-

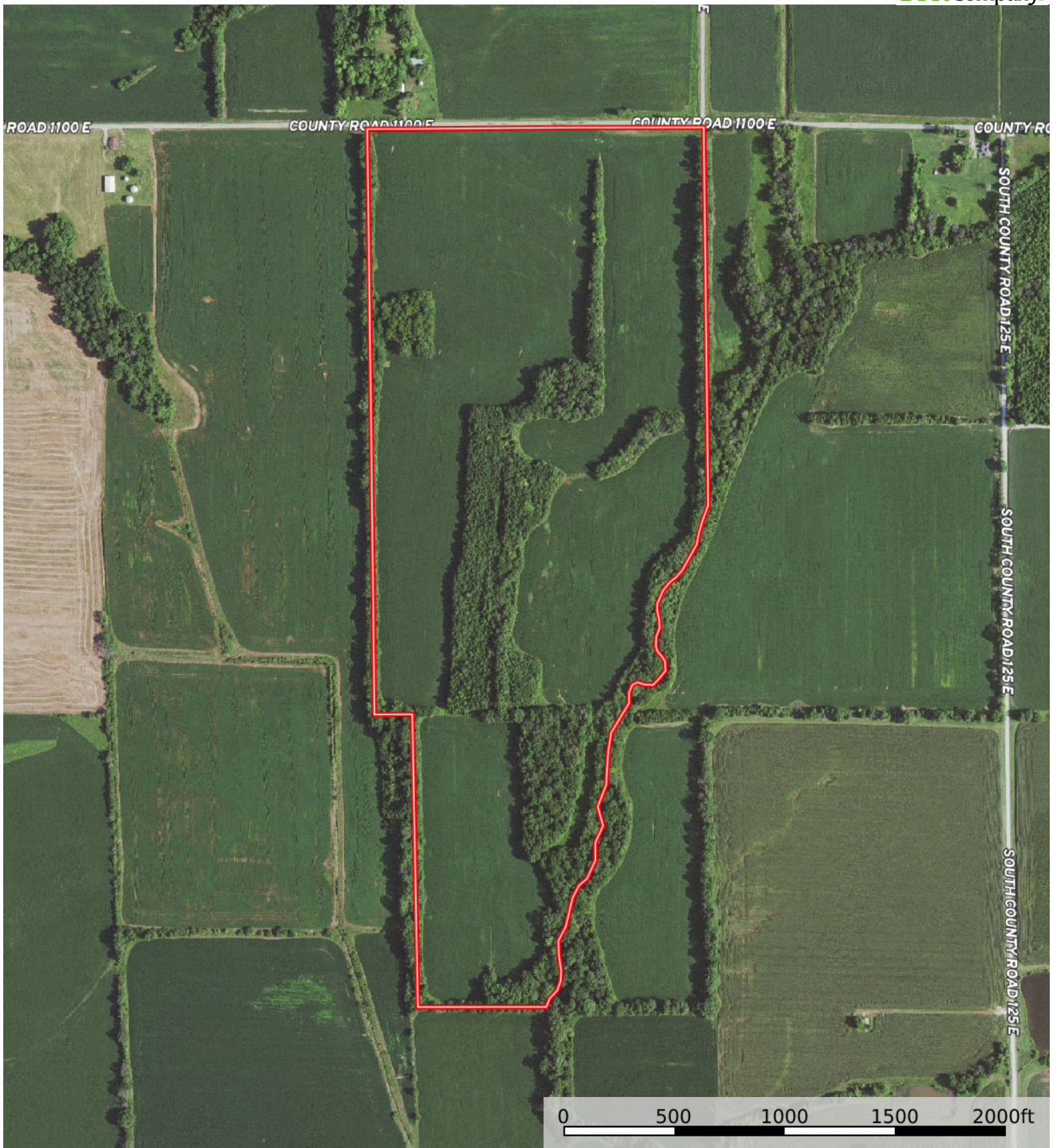


 Boundary



L-2400356

Clay County, Indiana, 116.99 AC +/-



 Boundary



 Boundary

Boundary 112.94 ac

SOIL CODE	SOIL DESCRIPTION	ACRES	%	CPI	NCCPI	CAP
Sn	Stendal silt loam, frequently flooded	47.4	41.97	0	88	2w
AvB2	Ava silt loam, 2 to 6 percent slopes, eroded	23.46	20.77	0	49	2e
VgA	Vigo silt loam, 0 to 2 percent slopes	17.08	15.12	0	74	2w
Sk	Steff silt loam, occasionally flooded	15.79	13.98	0	78	2w
CcC3	Cincinnati silt loam, Wabash Lowland, 6 to 12 percent slopes, severely eroded	5.69	5.04	0	34	4e
PkC2	Pike silt loam, 6 to 12 percent slopes, eroded	2.85	2.52	0	74	3e
Pg	Petrolia silty clay loam, frequently flooded	0.67	0.59	0	74	3w
TOTALS		112.94(*)	100%	-	73.23	2.13

(*) Total acres may differ in the second decimal compared to the sum of each acreage soil. This is due to a round error because we only show the acres of each soil with two decimal.

Capability Legend

Increased Limitations and Hazards

Decreased Adaptability and Freedom of Choice Users

Land, Capability

	1	2	3	4	5	6	7	8
'Wild Life'	•	•	•	•	•	•	•	•
Forestry	•	•	•	•	•	•	•	
Limited	•	•	•	•	•	•	•	
Moderate	•	•	•	•	•	•		
Intense	•	•	•	•	•			
Limited	•	•	•	•				
Moderate	•	•	•					
Intense	•	•						
Very Intense	•							

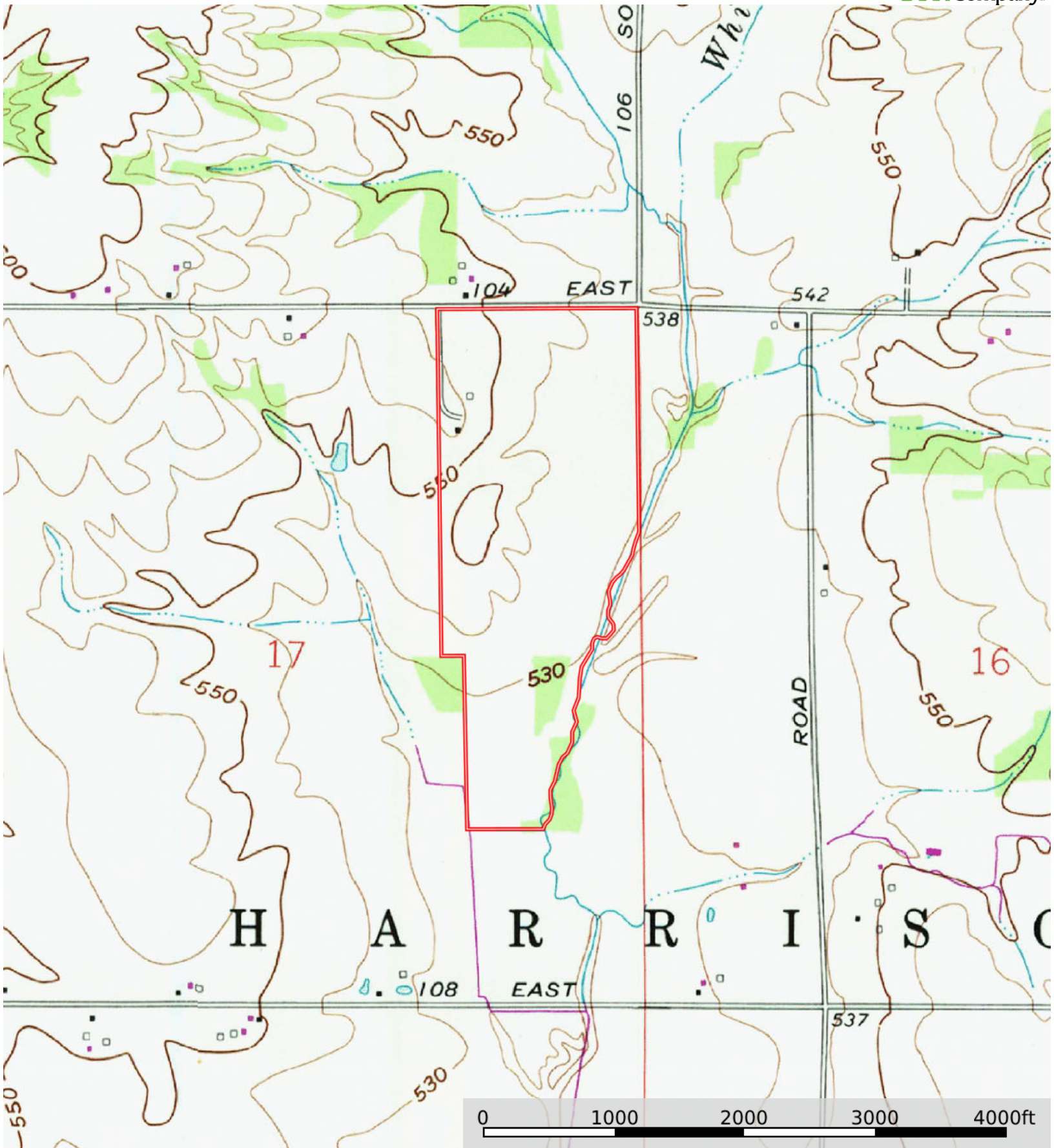
Grazing Cultivation

(c) climatic limitations (e) susceptibility to erosion

(s) soil limitations within the rooting zone (w) excess of water

L-2400356

Clay County, Indiana, 116.99 AC +/-



 Boundary