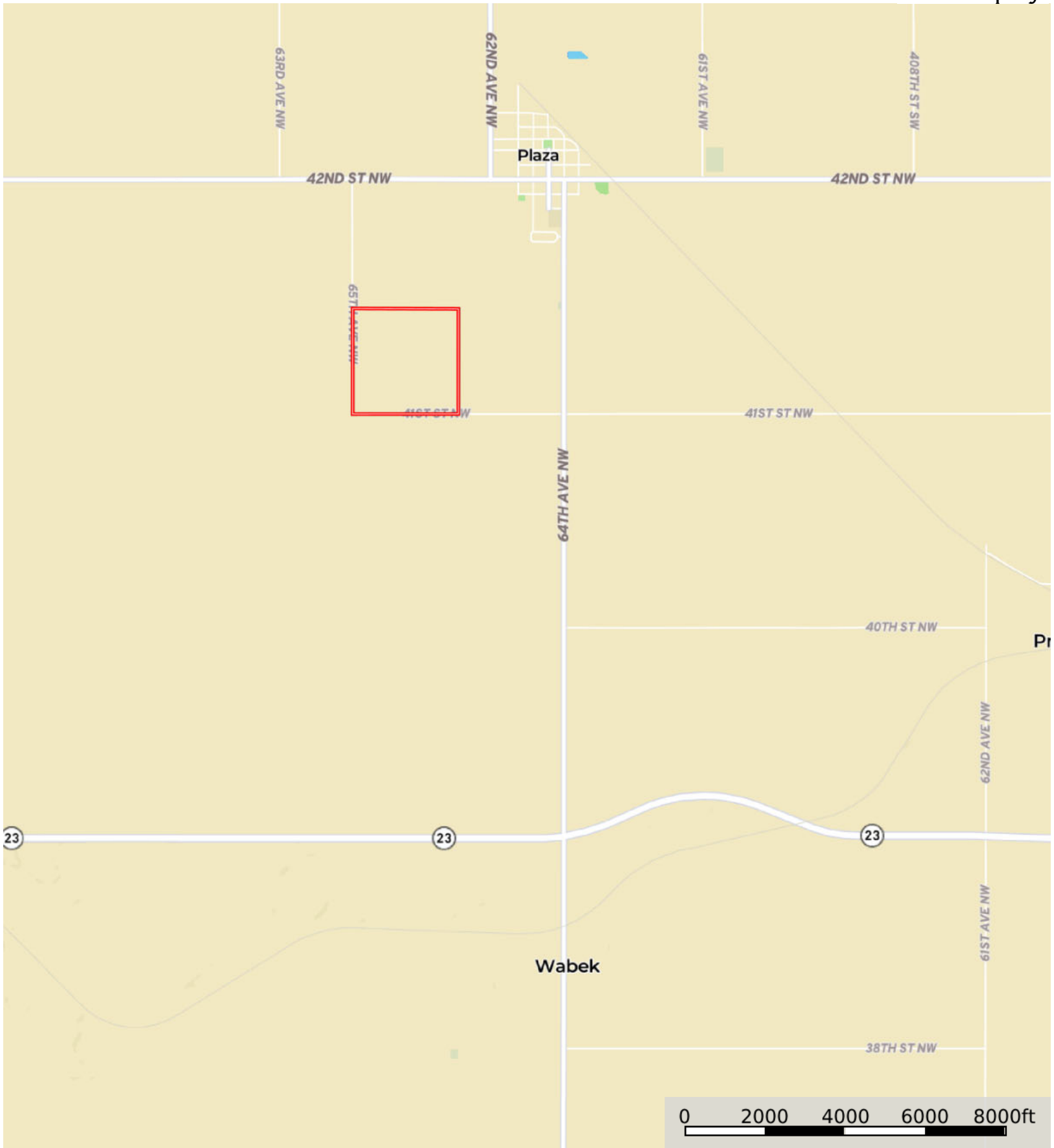


L-2400378

Mountrail County, North Dakota, 160 AC +/-



 Boundary

L-2400378

Mountrail County, North Dakota, 160 AC +/-





 Boundary

Boundary 159.81 ac

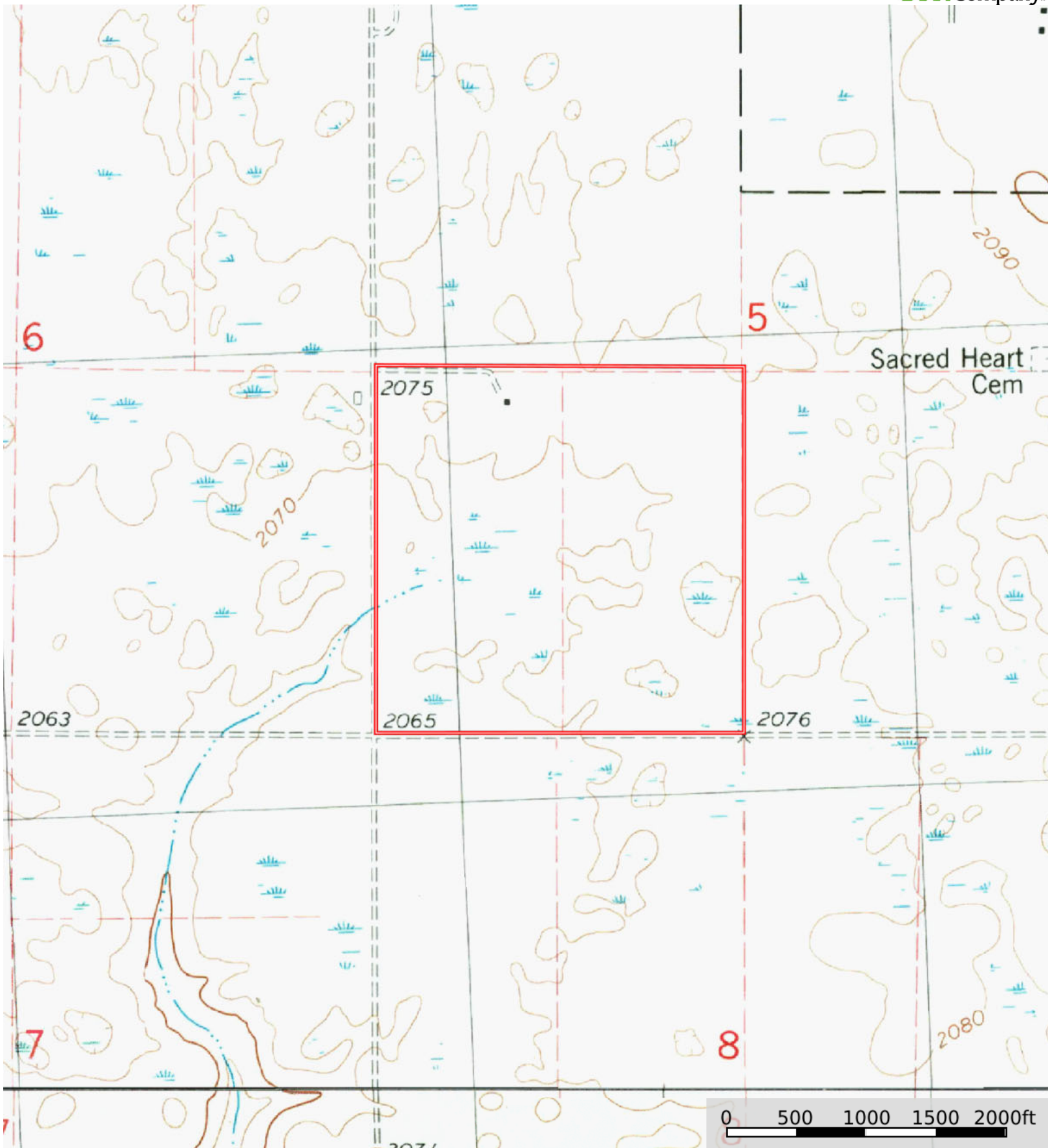
SOIL CODE	SOIL DESCRIPTION	ACRES	%	CPI	NCCPI	CAP
C210B	Williams-Bowbells loams, 3 to 6 percent slopes	101.6	63.58	84	55	2e
C132C	Williams-Zahl-Zahill complex, 6 to 9 percent slopes	36.48	22.83	61	52	3e
C2A	Tonka silt loam, 0 to 1 percent slopes	8.8	5.51	45	45	4w
C272A	Hamerly-Tonka complex, 0 to 3 percent slopes	7.04	4.41	63	51	2e
C415A	Tansem loam, 0 to 2 percent slopes	5.38	3.37	83	61	2c
C210A	Williams-Bowbells loams, 0 to 3 percent slopes	0.51	0.32	87	56	2c
TOTALS		159.8 1(*)	100%	75.66	53.8	2.34

(*) Total acres may differ in the second decimal compared to the sum of each acreage soil. This is due to a round error because we only show the acres of each soil with two decimal.




L-2400378

Mountrail County, North Dakota, 160 AC +/-



Sacred Heart Cem

0 500 1000 1500 2000ft

 Boundary