

Boundary

L-2400386

Lancaster County, Nebraska, 51.71 AC +/-



 Boundary



The information contained herein was obtained from sources deemed to be reliable. Land id™ Services makes no warranties or guarantees as to the completeness or accuracy thereof.

L-2400386

Lancaster County, Nebraska, 51.71 AC +/-



 Boundary



The information contained herein was obtained from sources deemed to be reliable. Land id™ Services makes no warranties or guarantees as to the completeness or accuracy thereof.

Boundary 51.63 ac

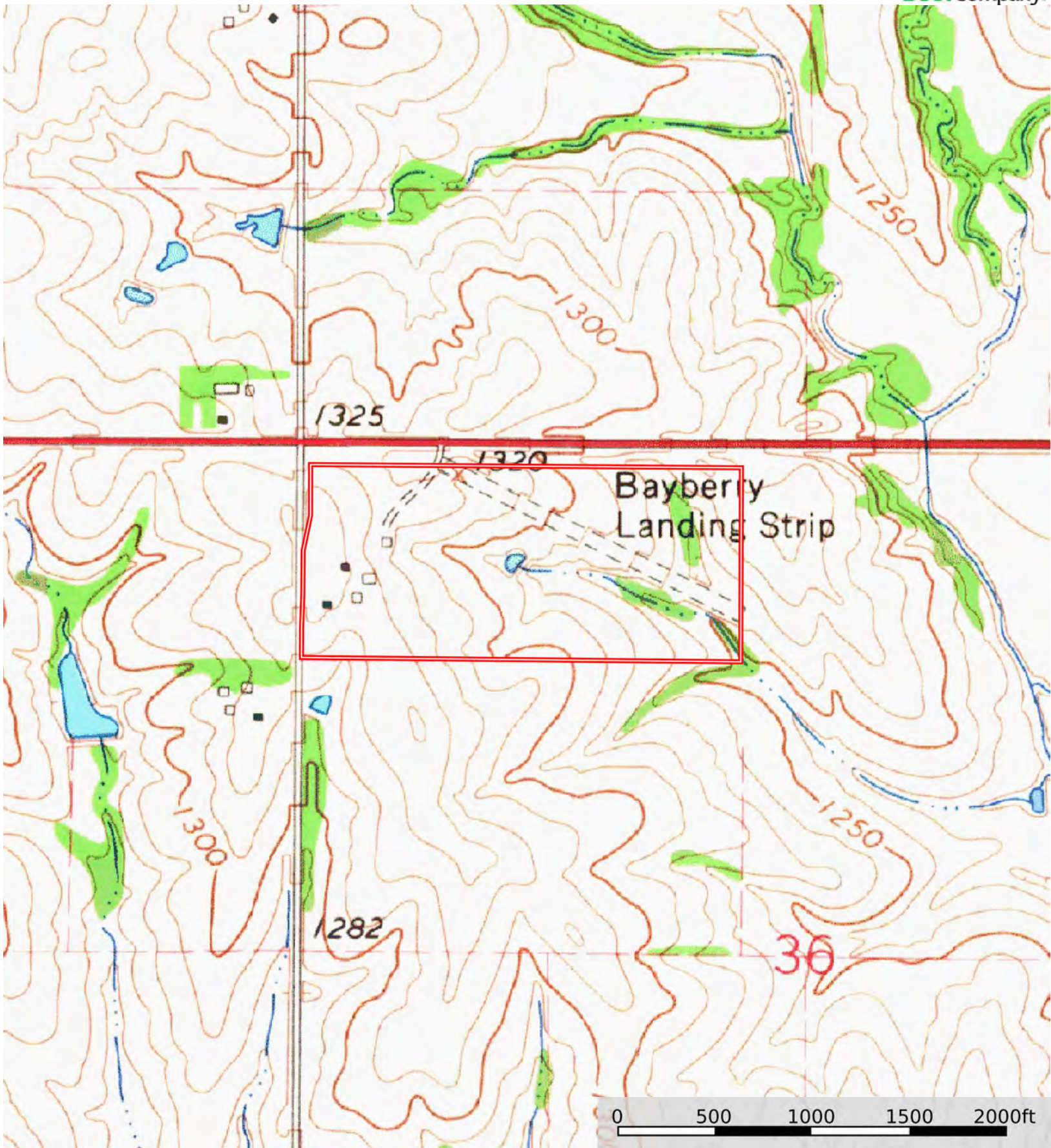
SOIL CODE	SOIL DESCRIPTION	ACRES	%	CPI	NCCPI	CAP
7501	Pawnee clay loam, 4 to 8 percent slopes, eroded	27.78	53.81	0	44	3e
7695	Wymore silty clay, 3 to 6 percent slopes, eroded	14.42	27.93	0	57	3e
7681	Wymore silty clay loam, 1 to 3 percent slopes	9	17.43	0	64	2e
7231	Judson silt loam, 2 to 6 percent slopes	0.43	0.83	0	78	2e
TOTALS		51.63(*)	100%	-	51.4	2.82

(*) Total acres may differ in the second decimal compared to the sum of each acreage soil. This is due to a round error because we only show the acres of each soil with two decimal.



L-2400386

Lancaster County, Nebraska, 51.71 AC +/-



 Boundary