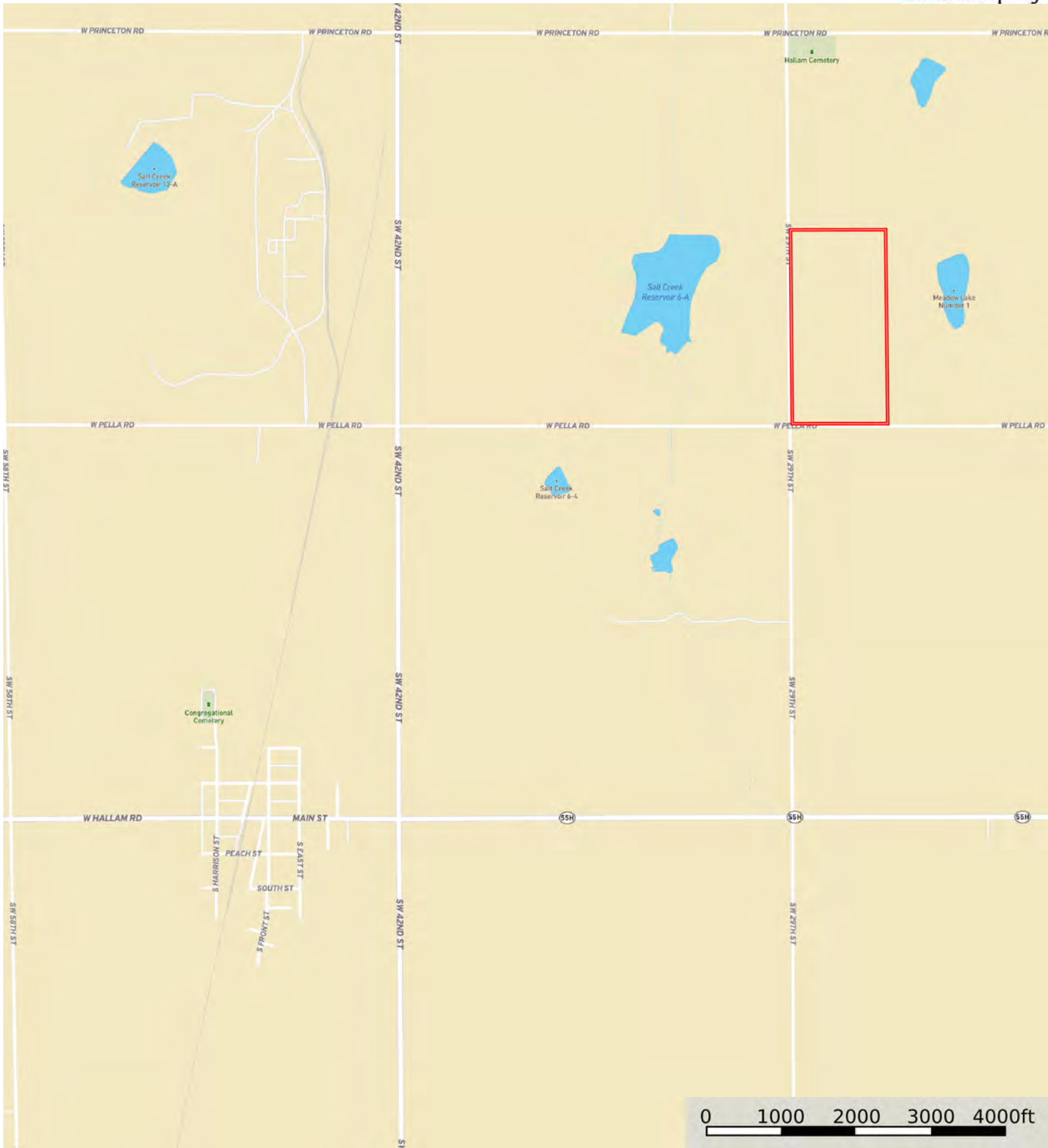


L-2400387

Lancaster County, Nebraska, 78.53 AC +/-



Boundary



The information contained herein was obtained from sources deemed to be reliable. Land id™ Services makes no warranties or guarantees as to the completeness or accuracy thereof.

L-2400387

Lancaster County, Nebraska, 78.53 AC +/-



Boundary



The information contained herein was obtained from sources deemed to be reliable. Land id™ Services makes no warranties or guarantees as to the completeness or accuracy thereof.



Boundary



| Boundary 76.37 ac

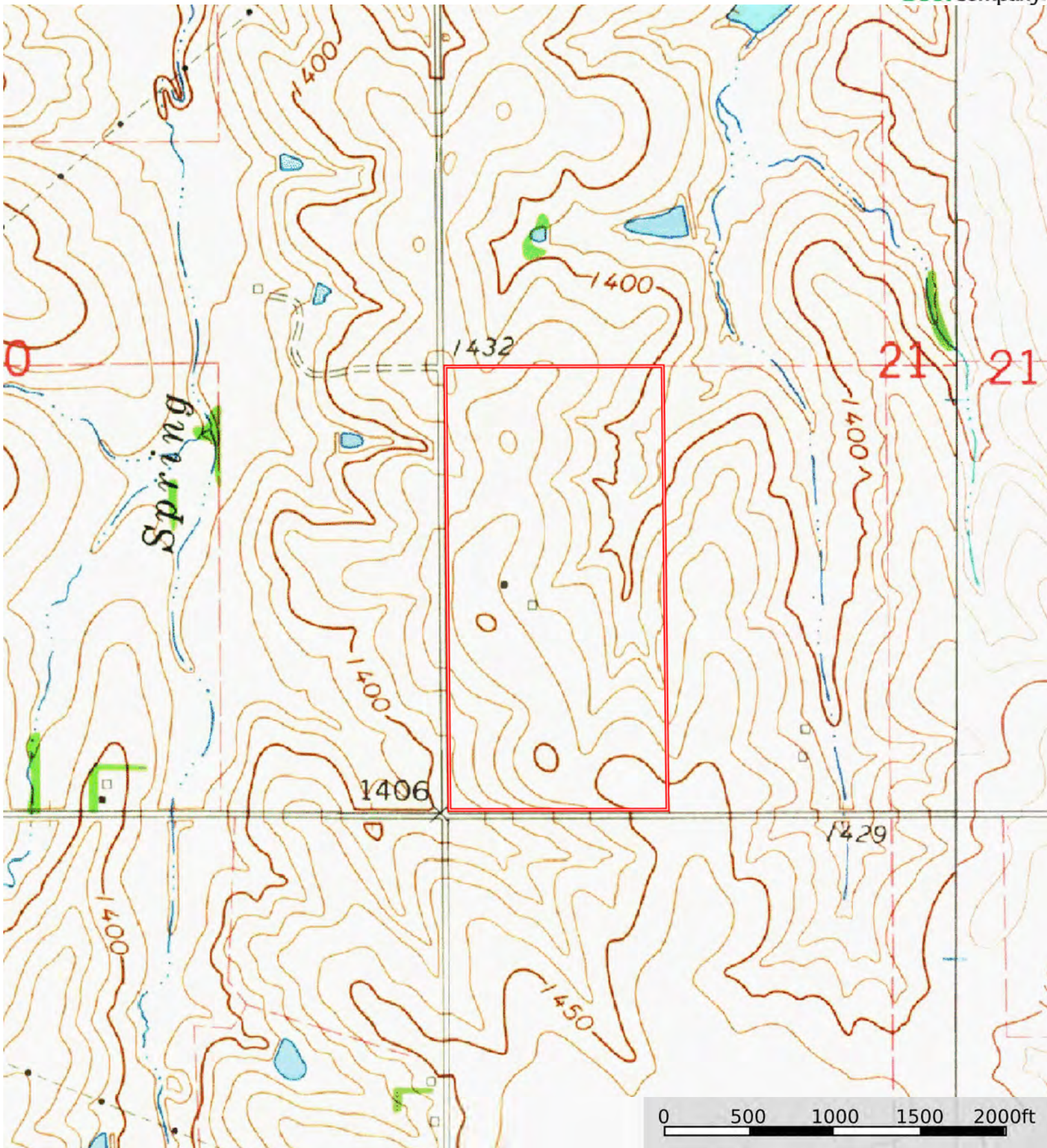
SOIL CODE	SOIL DESCRIPTION	ACRES	%	CPI	NCCPI	CAP
7501	Pawnee clay loam, 4 to 8 percent slopes, eroded	27.9	36.54	0	44	3e
7684	Wymore silty clay loam, 3 to 6 percent slopes, eroded	21.74	28.47	0	61	3e
7585	Shelby clay loam, 7 to 12 percent slopes	16.77	21.96	0	65	4e
7507	Pawnee clay loam, 6 to 11 percent slopes, eroded	4.93	6.46	0	42	4e
7614	Steinauer clay loam, 6 to 11 percent slopes, eroded	3.2	4.19	0	62	4e
7227	Burchard clay loam, 6 to 11 percent slopes	1.57	2.06	0	53	3e
7666	Mayberry silty clay loam, 3 to 6 percent slopes, eroded	0.26	0.34	0	53	3e
TOTALS		76.37(*)	100%	-	54.3	3.33

(*) Total acres may differ in the second decimal compared to the sum of each acreage soil. This is due to a round error because we only show the acres of each soil with two decimal.



L-2400387

Lancaster County, Nebraska, 78.53 AC +/-



Boundary



The information contained herein was obtained from sources deemed to be reliable. Land id™ Services makes no warranties or guarantees as to the completeness or accuracy thereof.