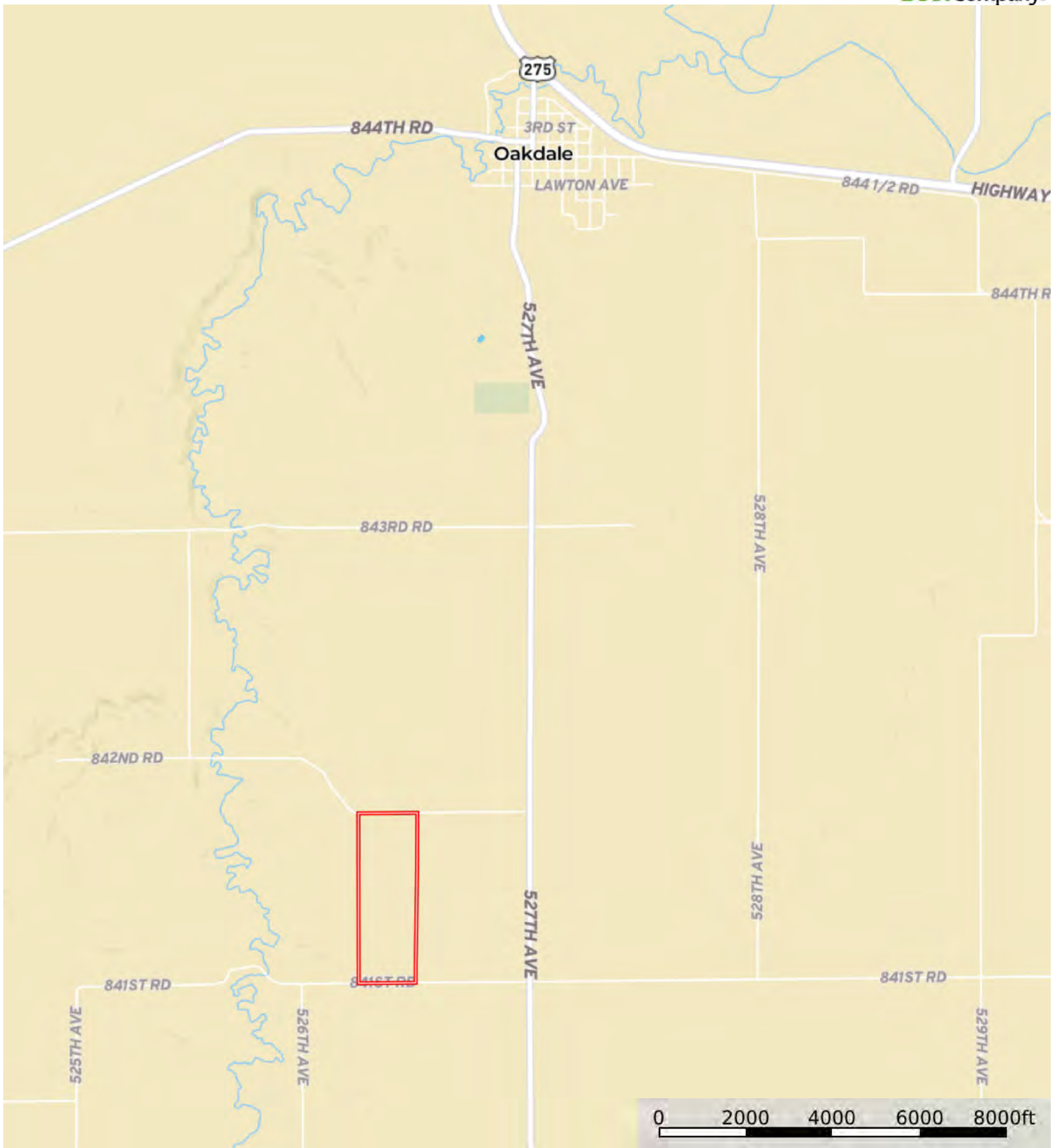


L-2400392

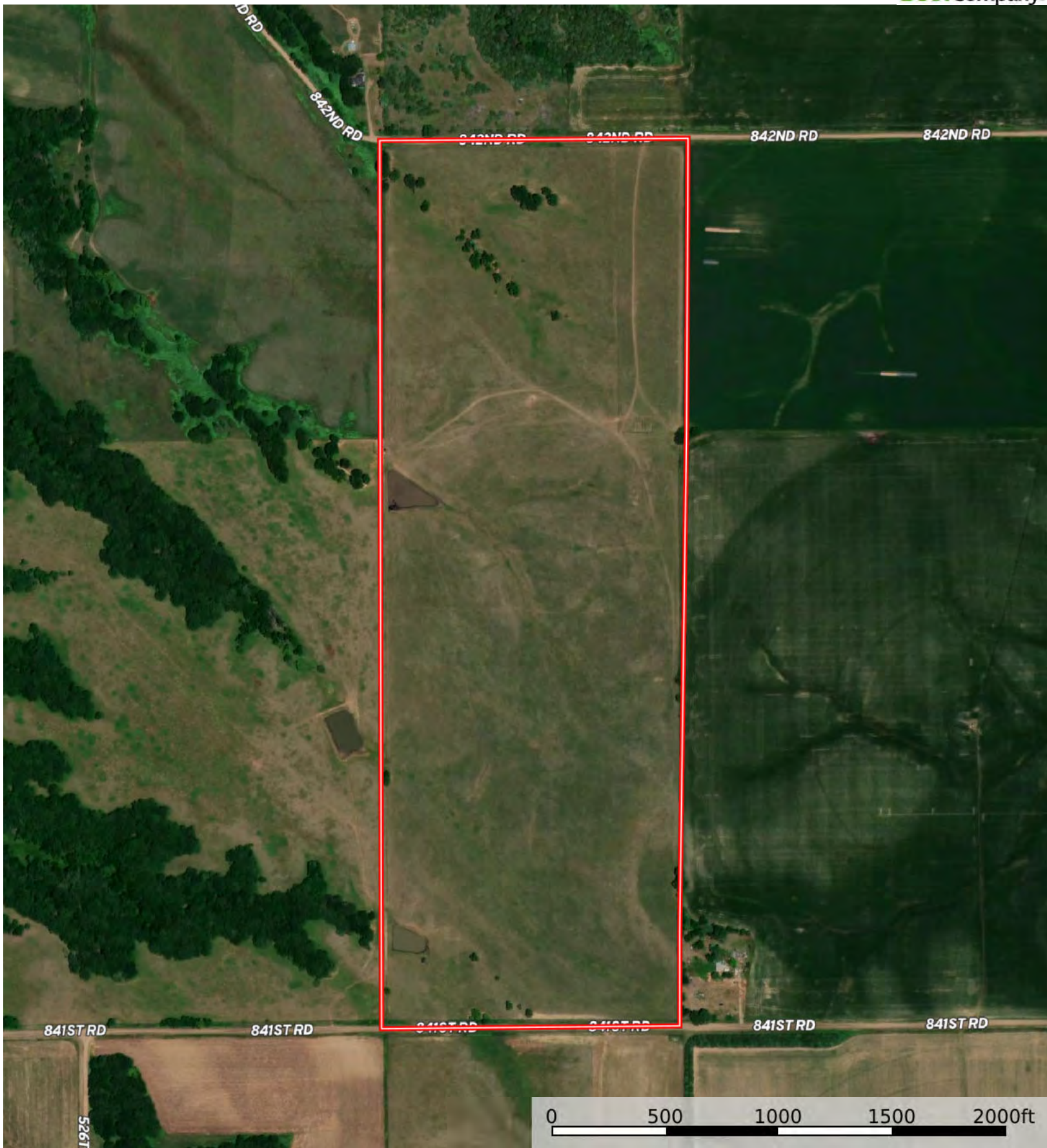
Antelope County, Nebraska, 120 AC +/-



 Boundary

L-2400392

Antelope County, Nebraska, 120 AC +/-

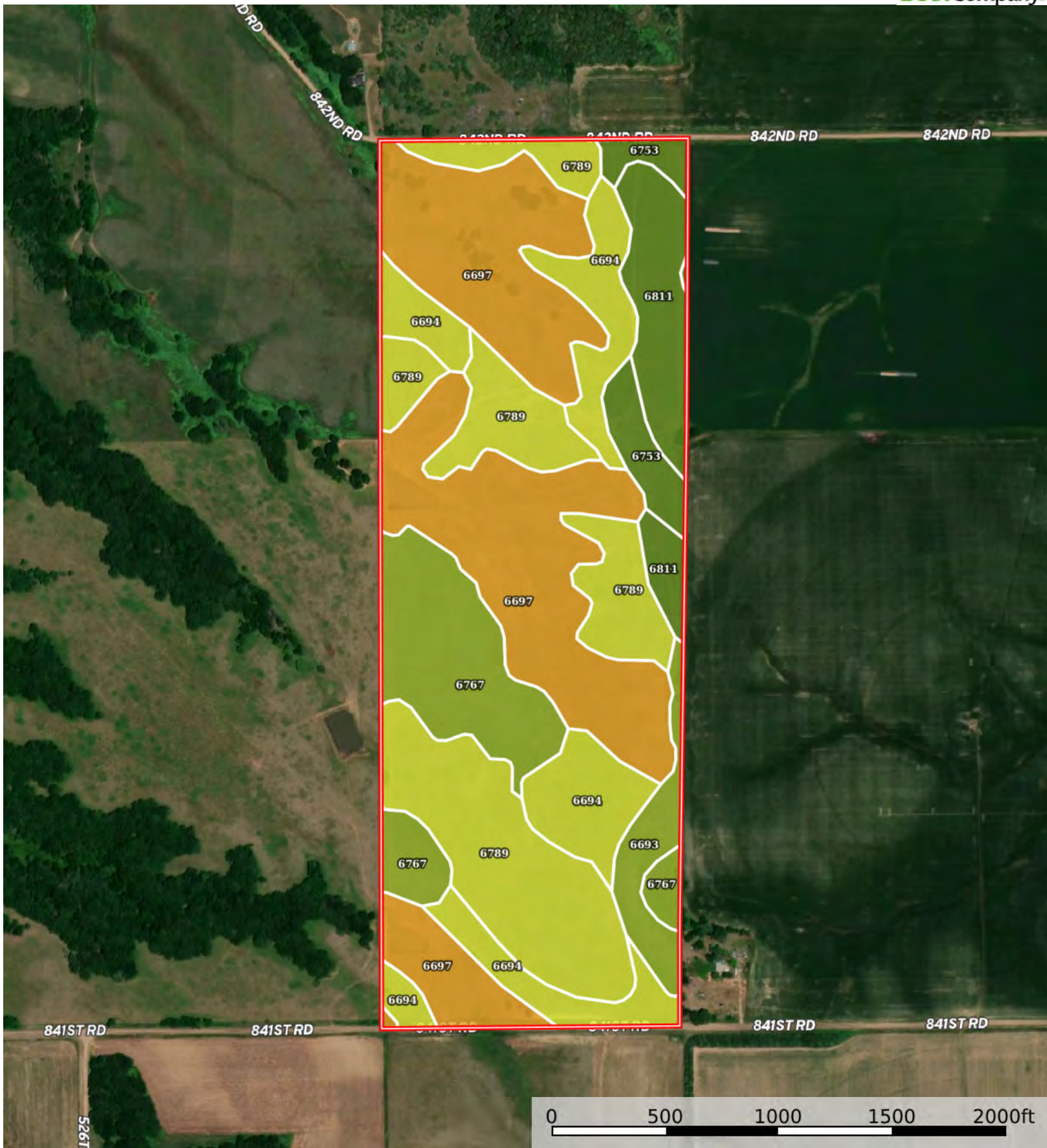


526T

Boundary



The information contained herein was obtained from sources deemed to be reliable. Land id™ Services makes no warranties or guarantees as to the completeness or accuracy thereof.



Boundary

| Boundary 121.18 ac

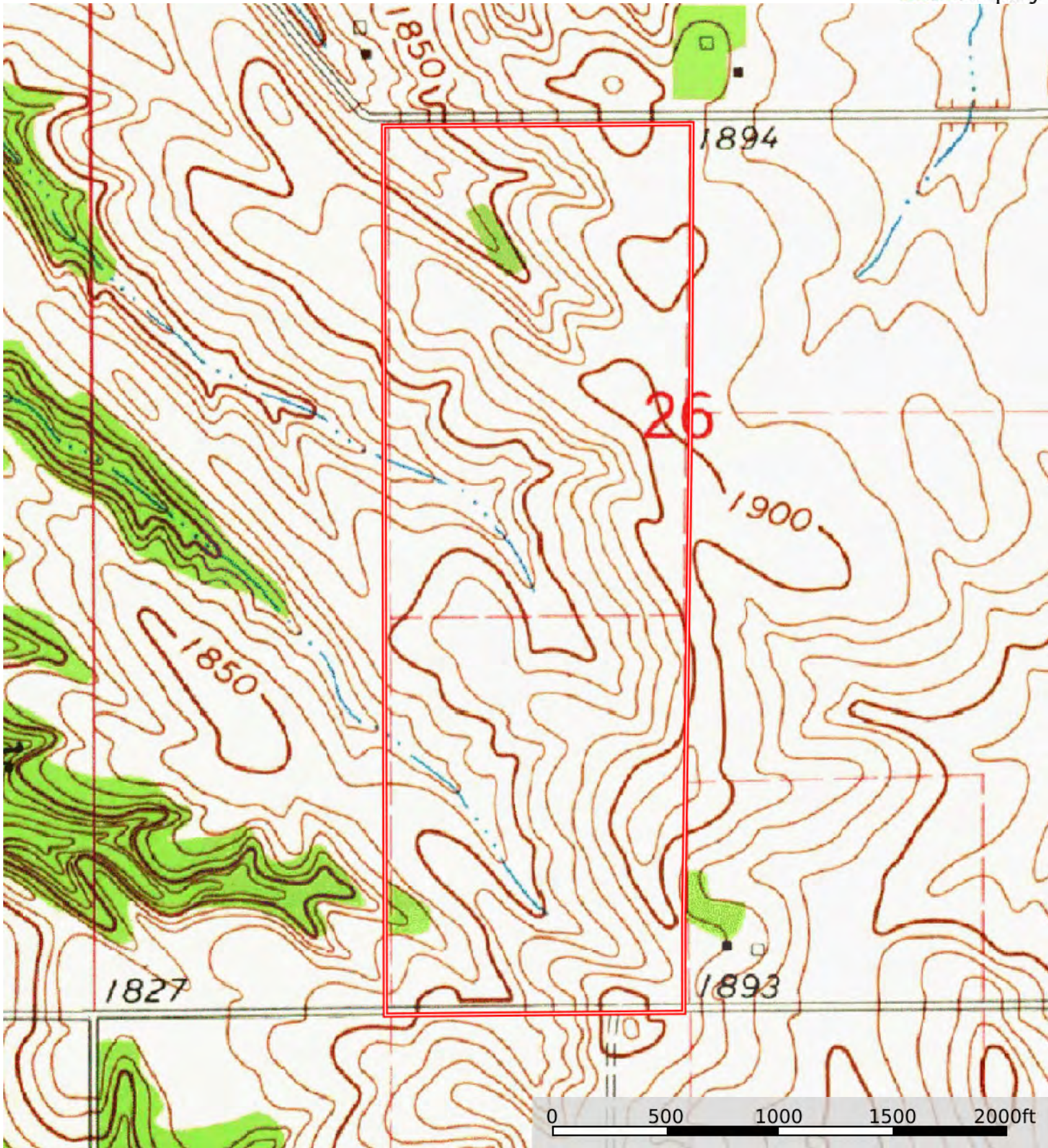
SOIL CODE	SOIL DESCRIPTION	ACRES	%	CPI	NCCPI	CAP
6697	Crofton-Nora complex, 17 to 30 percent slopes	41.41	34.18	34	40	6e
6789	Crofton-Nora complex, 11 to 17 percent slopes, eroded	29.32	24.2	48	60	4e
6694	Crofton-Nora complex, 6 to 11 percent slopes, eroded	18.17	15.0	47	65	4e
6767	Nora silty clay loam, 6 to 11 percent slopes	14.98	12.36	0	75	3e
6811	Moody silty clay loam, 2 to 6 percent slopes	8.6	7.1	67	75	2e
6753	Nora silt loam, 2 to 6 percent slopes	4.37	3.61	52	76	2e
6693	Crofton-Nora complex, 2 to 6 percent slopes, eroded	4.33	3.57	51	67	3e
TOTALS		121.18(*)	100%	38.74	57.67	4.31

(\*) Total acres may differ in the second decimal compared to the sum of each acreage soil. This is due to a round error because we only show the acres of each soil with two decimal.



L-2400392

Antelope County, Nebraska, 120 AC +/-



Boundary