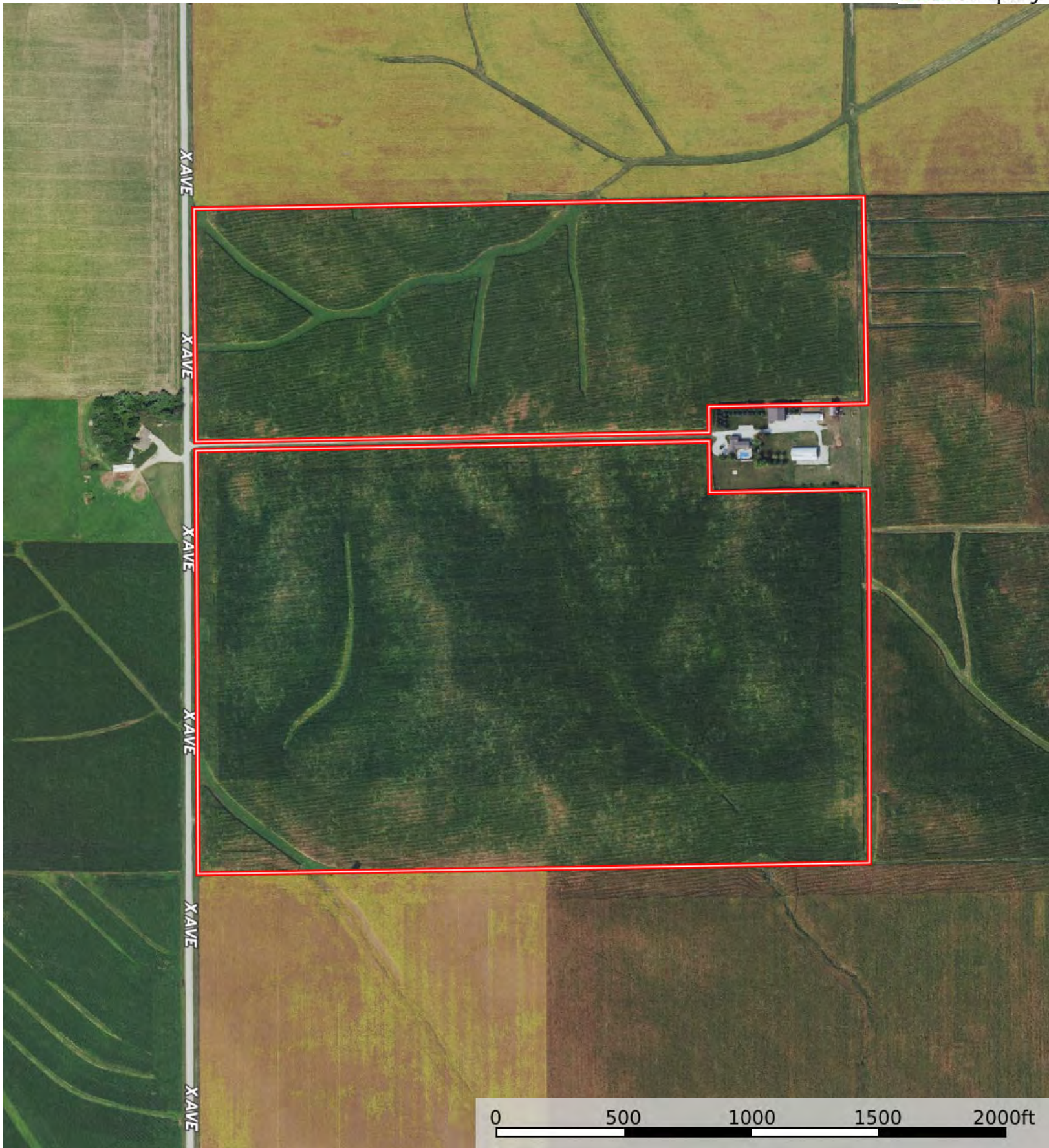

 Boundary



 Boundary



 Boundary

|  All Polygons 151.8 ac

SOIL CODE	SOIL DESCRIPTION	ACRES	%	CSR2	CPI	NCCPI	CAP
11B	Colo-Ely complex, 0 to 5 percent slopes	44.91	29.58	86.0	0	92	2w
377C2	Dinsdale silty clay loam, 5 to 9 percent slopes, eroded	35.68	23.5	85.0	0	82	3e
120B	Tama silty clay loam, 2 to 5 percent slopes	28.22	18.59	95.0	0	96	2e
377C	Dinsdale silty clay loam, 5 to 9 percent slopes	12.39	8.16	90.0	0	87	3e
120C	Tama silty clay loam, 5 to 9 percent slopes	8.48	5.59	90.0	0	92	3e
377B	Dinsdale silty clay loam, 2 to 5 percent slopes	8.34	5.49	94.0	0	89	2e
120C2	Tama silty clay loam, 5 to 9 percent slopes, eroded	6.47	4.26	87.0	0	88	3e
377D2	Dinsdale silty clay loam, 9 to 14 percent slopes, eroded	6.2	4.08	62.0	0	79	3e
484	Lawson silt loam, 0 to 2 percent slopes, occasionally flooded	0.94	0.62	79.0	0	85	2w
119B	Muscatine silty clay loam, 2 to 5 percent slopes	0.17	0.11	95.0	0	95	2e
TOTALS		151.8(*)	100%	87.45	-	89.07	2.46

(*) Total acres may differ in the second decimal compared to the sum of each acreage soil. This is due to a round error because we only show the acres of each soil with two decimal.

| Boundary 98.01 ac

SOIL CODE	SOIL DESCRIPTION	ACRES	%	CSR2	CPI	NCCPI	CAP
11B	Colo-Ely complex, 0 to 5 percent slopes	24.75	25.25	86.0	0	92	2w
377C2	Dinsdale silty clay loam, 5 to 9 percent slopes, eroded	20.73	21.15	85.0	0	82	3e
120B	Tama silty clay loam, 2 to 5 percent slopes	19.59	19.99	95.0	0	96	2e
377C	Dinsdale silty clay loam, 5 to 9 percent slopes	12.39	12.64	90.0	0	87	3e
120C	Tama silty clay loam, 5 to 9 percent slopes	8.43	8.6	90.0	0	92	3e
120C2	Tama silty clay loam, 5 to 9 percent slopes, eroded	6.47	6.6	87.0	0	88	3e
377D2	Dinsdale silty clay loam, 9 to 14 percent slopes, eroded	4.51	4.6	62.0	0	79	3e
484	Lawson silt loam, 0 to 2 percent slopes, occasionally flooded	0.94	0.96	79.0	0	85	2w
119B	Muscatine silty clay loam, 2 to 5 percent slopes	0.17	0.17	95.0	0	95	2e
377B	Dinsdale silty clay loam, 2 to 5 percent slopes	0.03	0.03	94.0	0	89	2e
TOTALS		98.01(*)	100%	87.34	-	89.12	2.54

(*) Total acres may differ in the second decimal compared to the sum of each acreage soil. This is due to a round error because we only show the acres of each soil with two decimal.

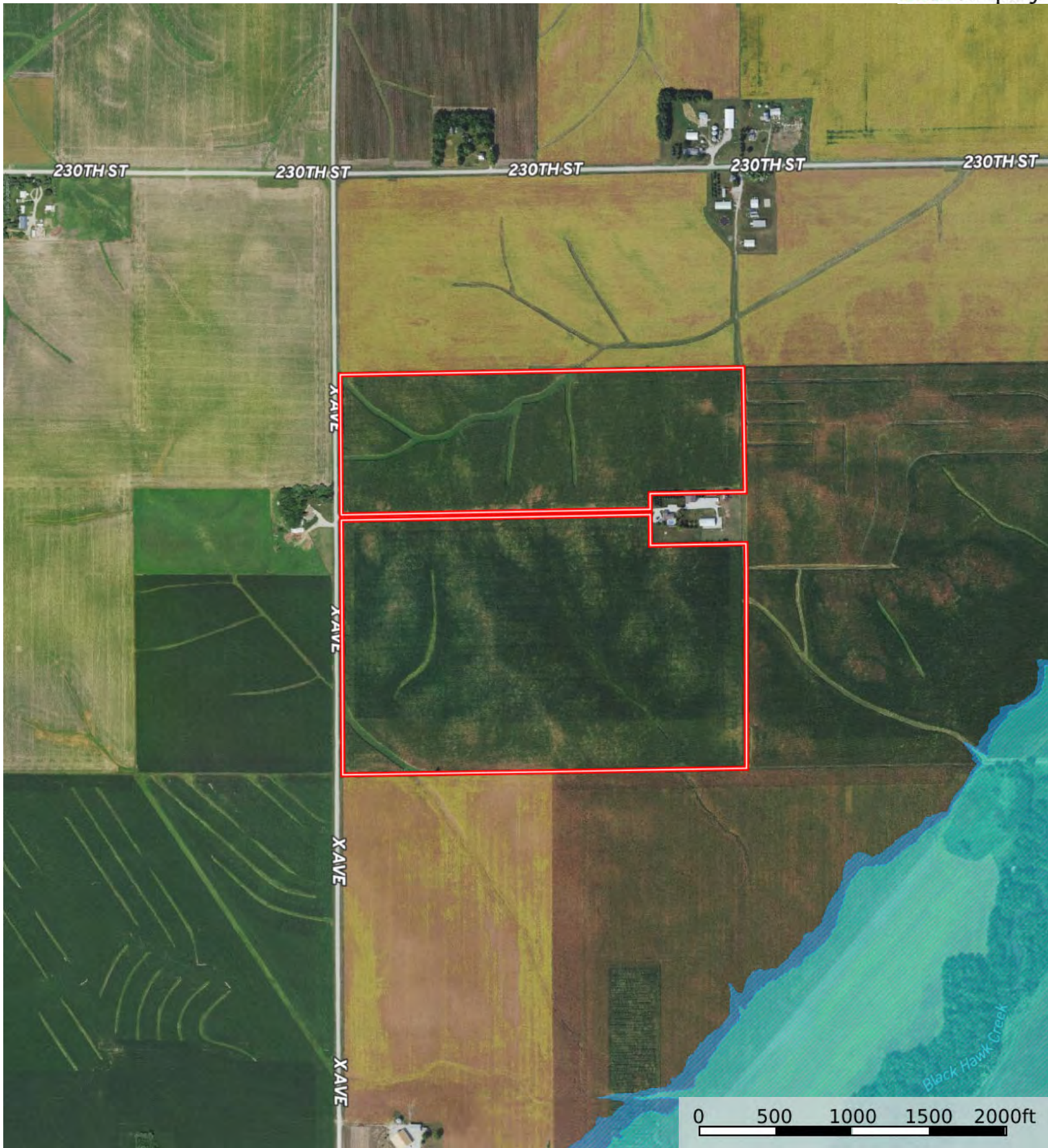
| Boundary 53.79 ac

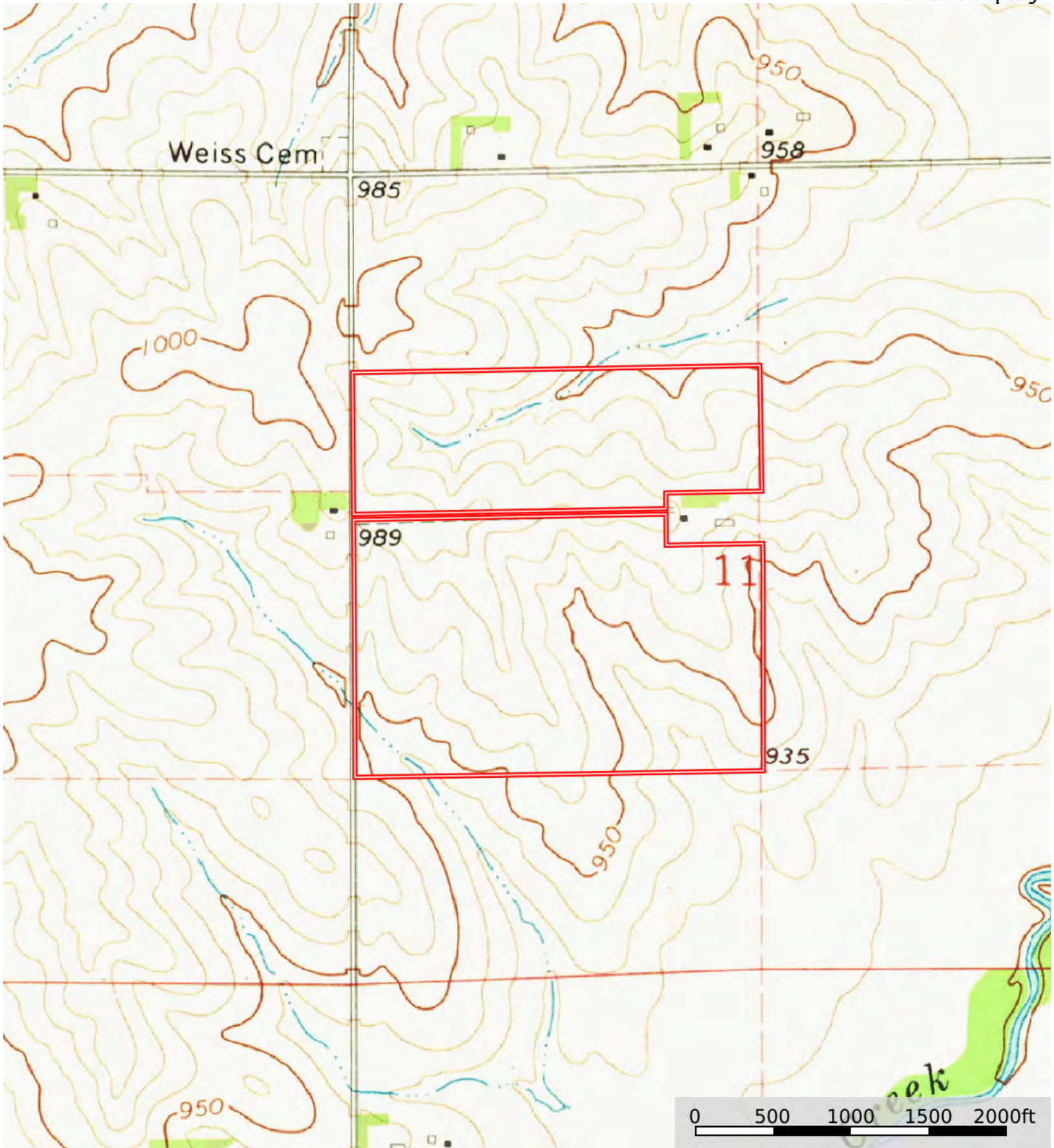
SOIL CODE	SOIL DESCRIPTION	ACRES	%	CSR2	CPI	NCCPI	CAP
11B	Colo-Ely complex, 0 to 5 percent slopes	20.16	37.47	86.0	0	92	2w
377C2	Dinsdale silty clay loam, 5 to 9 percent slopes, eroded	14.95	27.79	85.0	0	82	3e


120B	Tama silty clay loam, 2 to 5 percent slopes	8.63	16.04	95.0	0	96	2e
377B	Dinsdale silty clay loam, 2 to 5 percent slopes	8.31	15.45	94.0	0	89	2e
377D2	Dinsdale silty clay loam, 9 to 14 percent slopes, eroded	1.69	3.14	62.0	0	79	3e
120C	Tama silty clay loam, 5 to 9 percent slopes	0.05	0.09	90.0	0	92	3e
TOTALS		53.79(*)	100%	87.64	-	88.97	2.31

(*) Total acres may differ in the second decimal compared to the sum of each acreage soil. This is due to a round error because we only show the acres of each soil with two decimal.







 Boundary