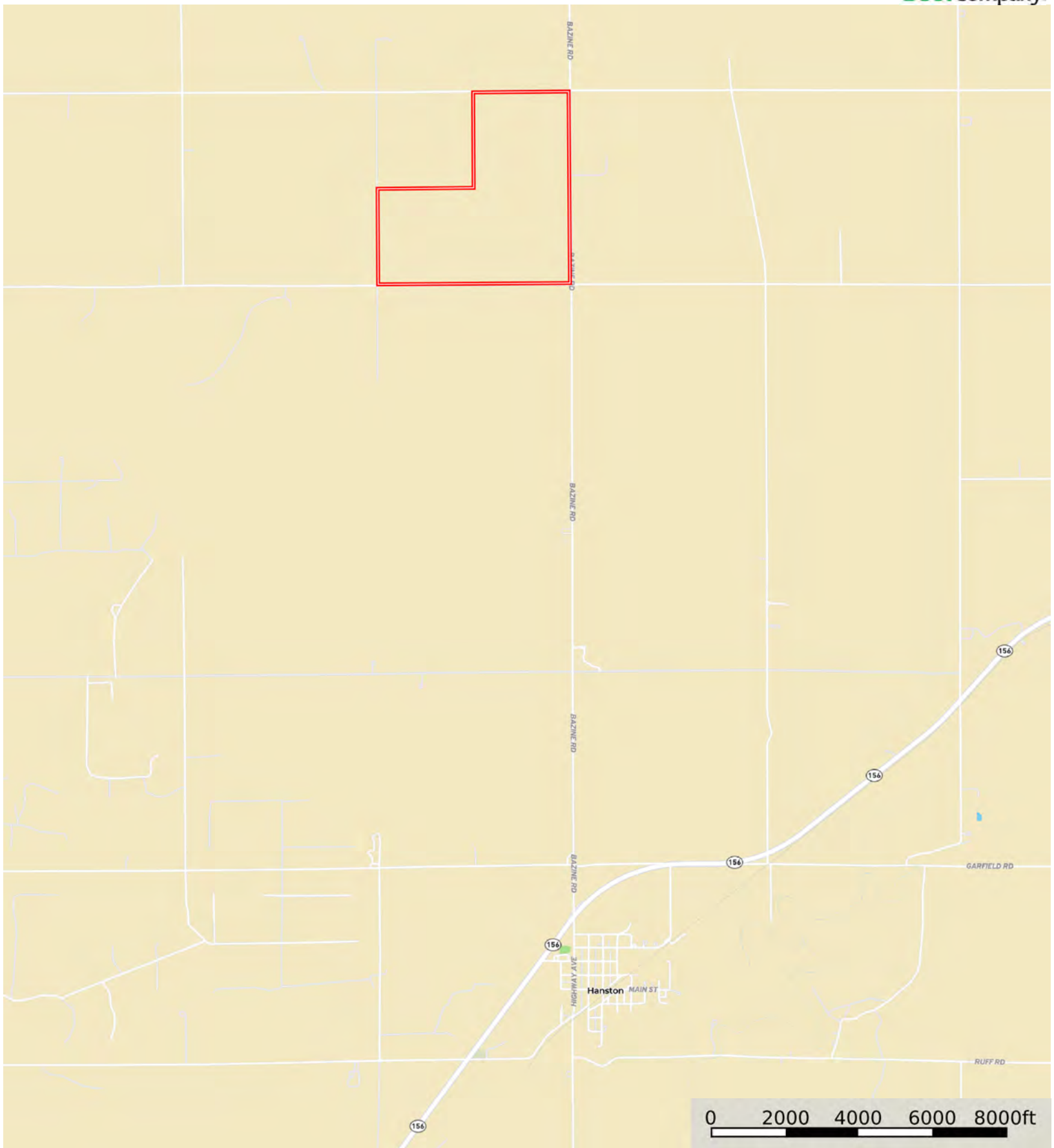


L-2400403

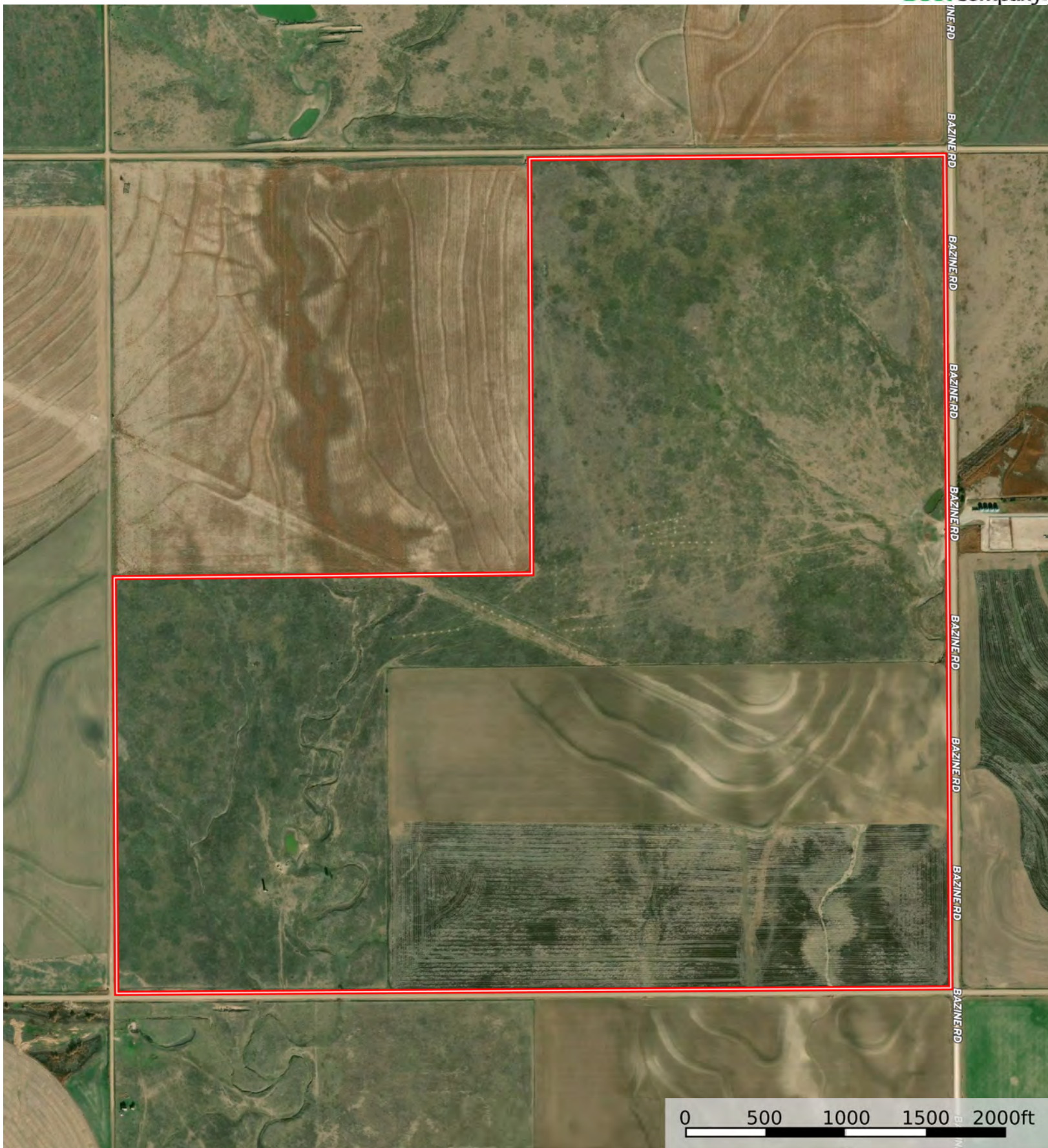
Hodgeman County, Kansas, 468 AC +/-



 Boundary

L-2400403

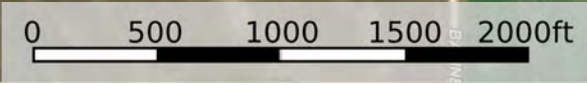
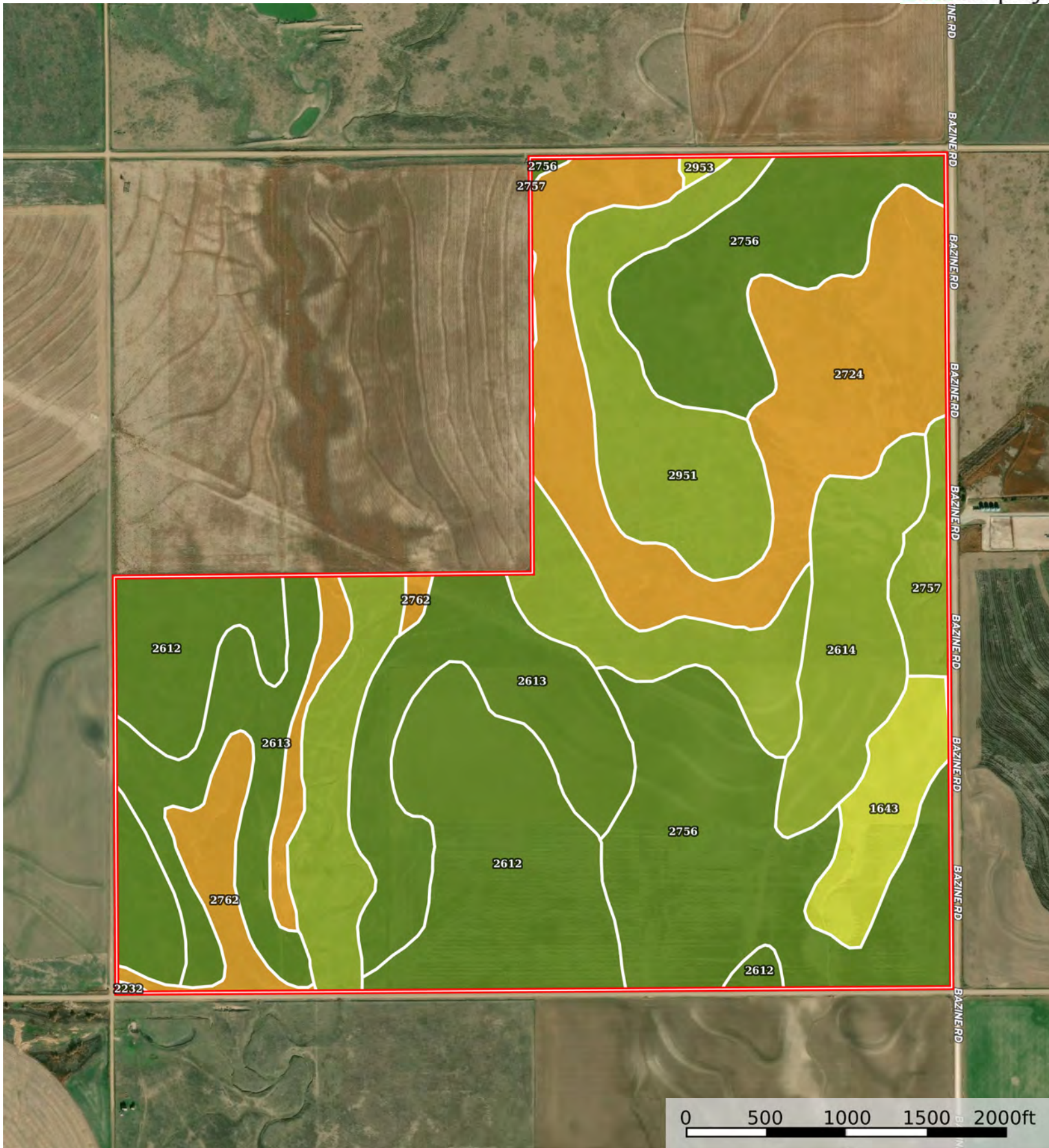
Hodgeman County, Kansas, 468 AC +/-



 Boundary



The information contained herein was obtained from sources deemed to be reliable. Land ID™ Services makes no warranties or guarantees as to the completeness or accuracy thereof.



 Boundary

 Boundary 468.07 ac

SOIL CODE	SOIL DESCRIPTION	ACRES	%	CPI	NCCPI	CAP
2756	Penden silty clay loam, 1 to 3 percent slopes	98.6	21.07	0	68	2e
2612	Harney silt loam, 0 to 1 percent slopes	76.08	16.25	0	70	2c
2724	Nibson-Wakeen loams, 3 to 20 percent slopes	72.13	15.41	0	36	6e
2613	Harney silt loam, 1 to 3 percent slopes	65.99	14.1	0	69	2e
2951	Wakeen silt loam, 1 to 3 percent slopes	36.34	7.76	0	48	3e
2757	Penden silty clay loam, 3 to 7 percent slopes	31.93	6.82	0	67	3e
2614	Harney silt loam, 3 to 7 percent slopes	29.57	6.32	0	68	3e
2232	Roxbury-Bridgeport complex, channeled, frequently flooded	21.29	4.55	0	47	3w
2762	Penden-Humbarger complex, 0 to 12 percent slopes	19.13	4.09	0	63	6e
1643	Kim-Penden silty clay loams, 3 to 6 percent slopes, eroded	16.14	3.45	0	54	4e
2953	Wakeen silt loam, 3 to 7 percent slopes	0.87	0.19	0	47	4e
TOTALS		468.07(*)	100%	-	60.24	3.11









(*) Total acres may differ in the second decimal compared to the sum of each acreage soil. This is due to a round error because we only show the acres of each soil with two decimal.

Capability Legend

Increased Limitations and Hazards

Decreased Adaptability and Freedom of Choice Users

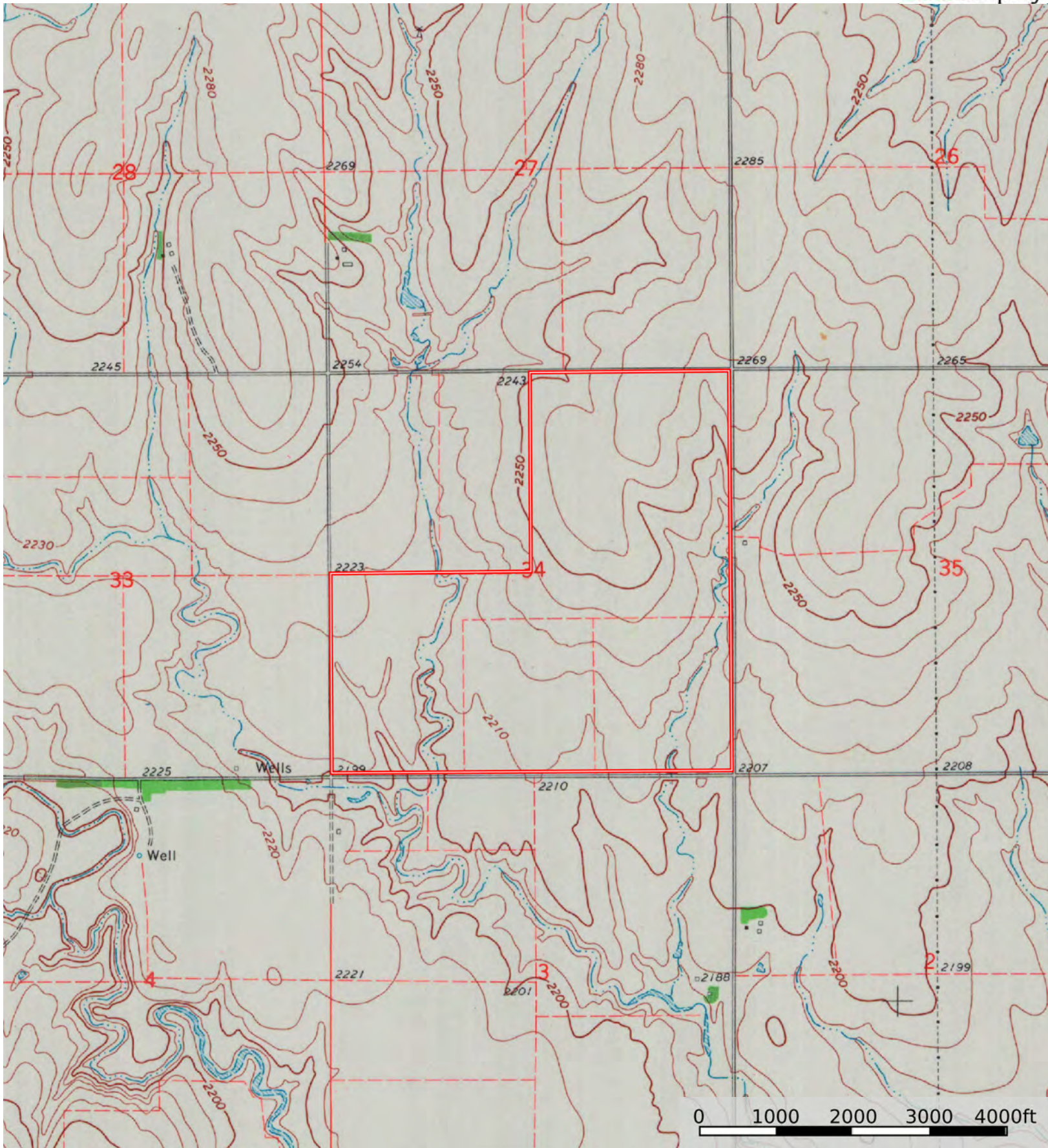
Land, Capability

								
	1	2	3	4	5	6	7	8
'Wild Life'	•	•	•	•	•	•	•	•
Forestry	•	•	•	•	•	•	•	
Limited	•	•	•	•	•	•	•	
Moderate	•	•	•	•	•	•		
Intense	•	•	•	•	•			
Limited	•	•	•	•				
Moderate	•	•	•					
Intense	•	•						
Very Intense	•							

Grazing Cultivation

(c) climatic limitations (e) susceptibility to erosion

(s) soil limitations within the rooting zone (w) excess of water



 Boundary

