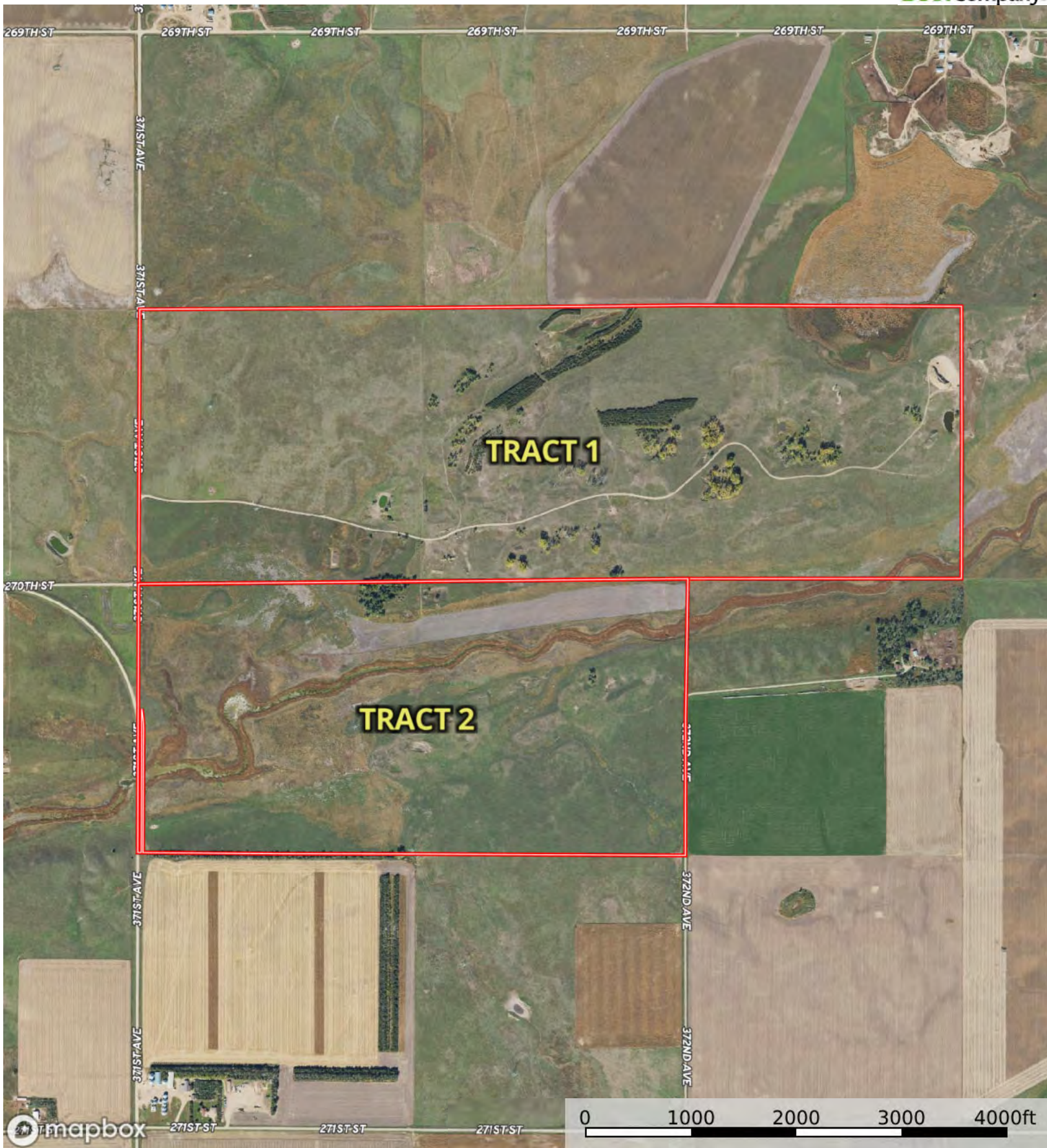


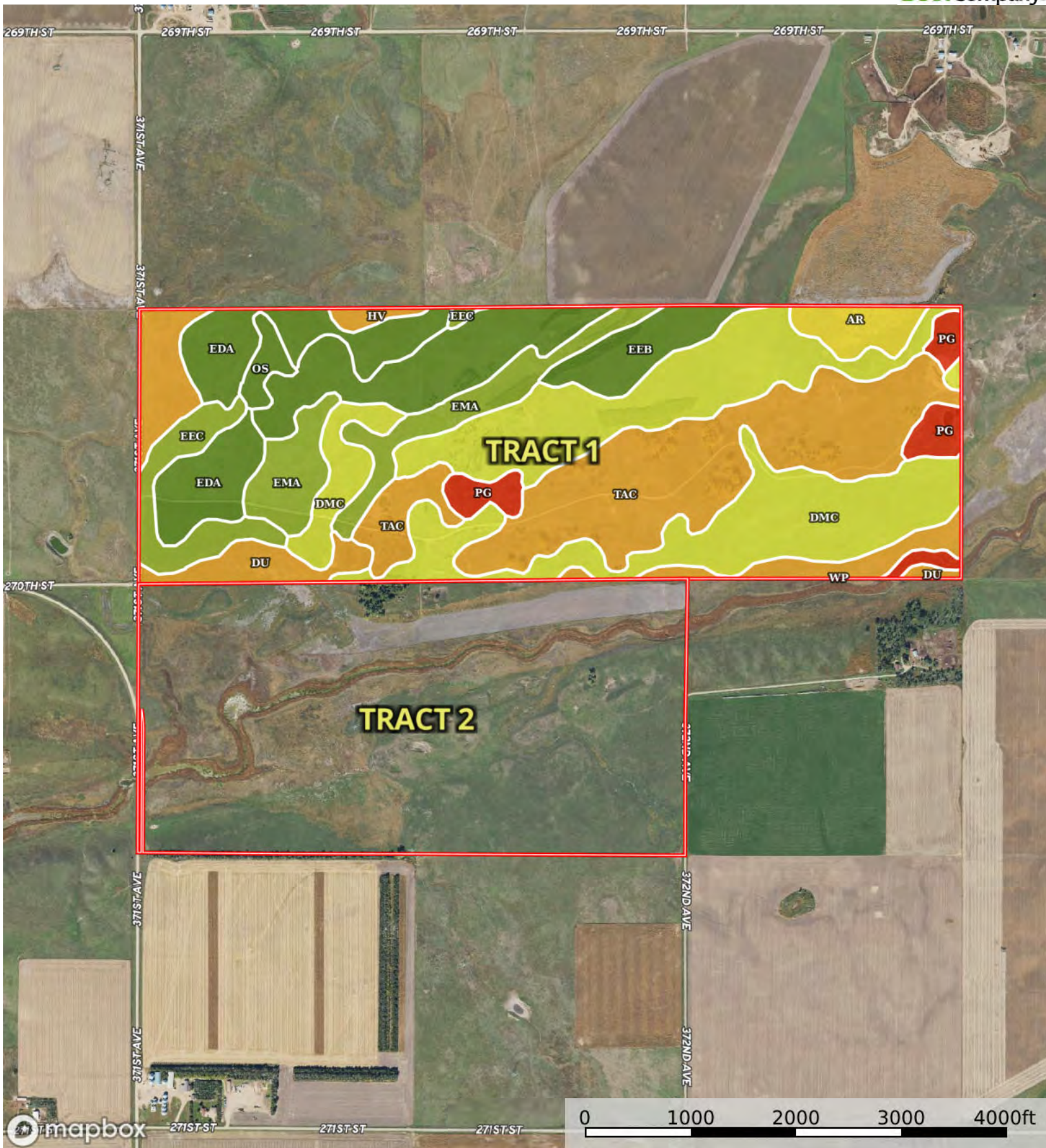
 Boundary

L-2400406

Charles Mix County, South Dakota, 799.51 AC +/-



Boundary



 Boundary

|  Boundary 468.36 ac

SOIL CODE	SOIL DESCRIPTION	ACRES	%	CPI	NCCPI	CAP
DmC	Delmont-Talmo complex, 2 to 9 percent slopes	141.64	30.24	29	35	4e
TaC	Talmo gravelly sandy loam, 2 to 9 percent slopes	98.93	21.12	10	28	6s
EeB	Eakin-Ethan complex, 2 to 6 percent slopes	54.67	11.67	76	64	2e
EdA	Eakin-DeGrey silt loams, 0 to 4 percent slopes	42.67	9.11	72	58	2e
Du	Durrstein silt loam	40.05	8.55	12	18	6s
EmA	Enet loam, 0 to 2 percent slopes	35.67	7.62	60	46	3s
EeC	Eakin-Ethan complex, 6 to 9 percent slopes	18.5	3.95	66	63	3e
Pg	Orthents, gravelly	14.49	3.09	0	7	8s
Ar	Arlo silt loam, wet	11.17	2.38	27	16	5w
Os	Onita-Hoven silt loams	5.32	1.14	73	47	2c
Hv	Hoven silt loam, 0 to 1 percent slopes	2.86	0.61	15	7	6s
Wp	Worthing silty clay loam, ponded, 0 to 1 percent slopes	2.39	0.51	10	6	8w
TOTALS		468.36(*)	100%	36.13	37.99	4.22









(*) Total acres may differ in the second decimal compared to the sum of each acreage soil. This is due to a round error because we only show the acres of each soil with two decimal.

Capability Legend

Increased Limitations and Hazards

Decreased Adaptability and Freedom of Choice Users

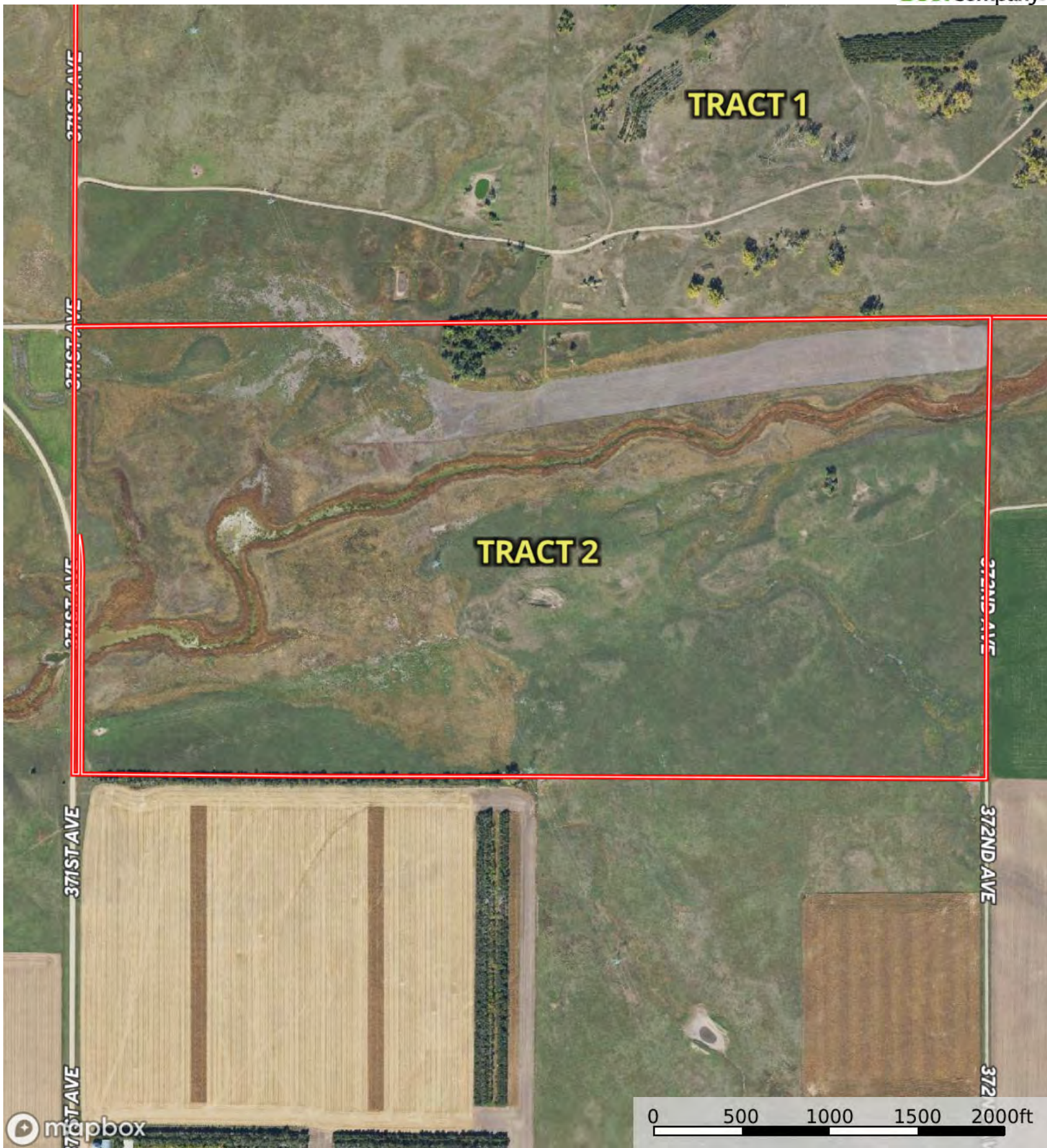
Land, Capability


								
	1	2	3	4	5	6	7	8
'Wild Life'	•	•	•	•	•	•	•	•
Forestry	•	•	•	•	•	•	•	
Limited	•	•	•	•	•	•	•	
Moderate	•	•	•	•	•	•		
Intense	•	•	•	•	•			
Limited	•	•	•	•				
Moderate	•	•	•					
Intense	•	•						
Very Intense	•							

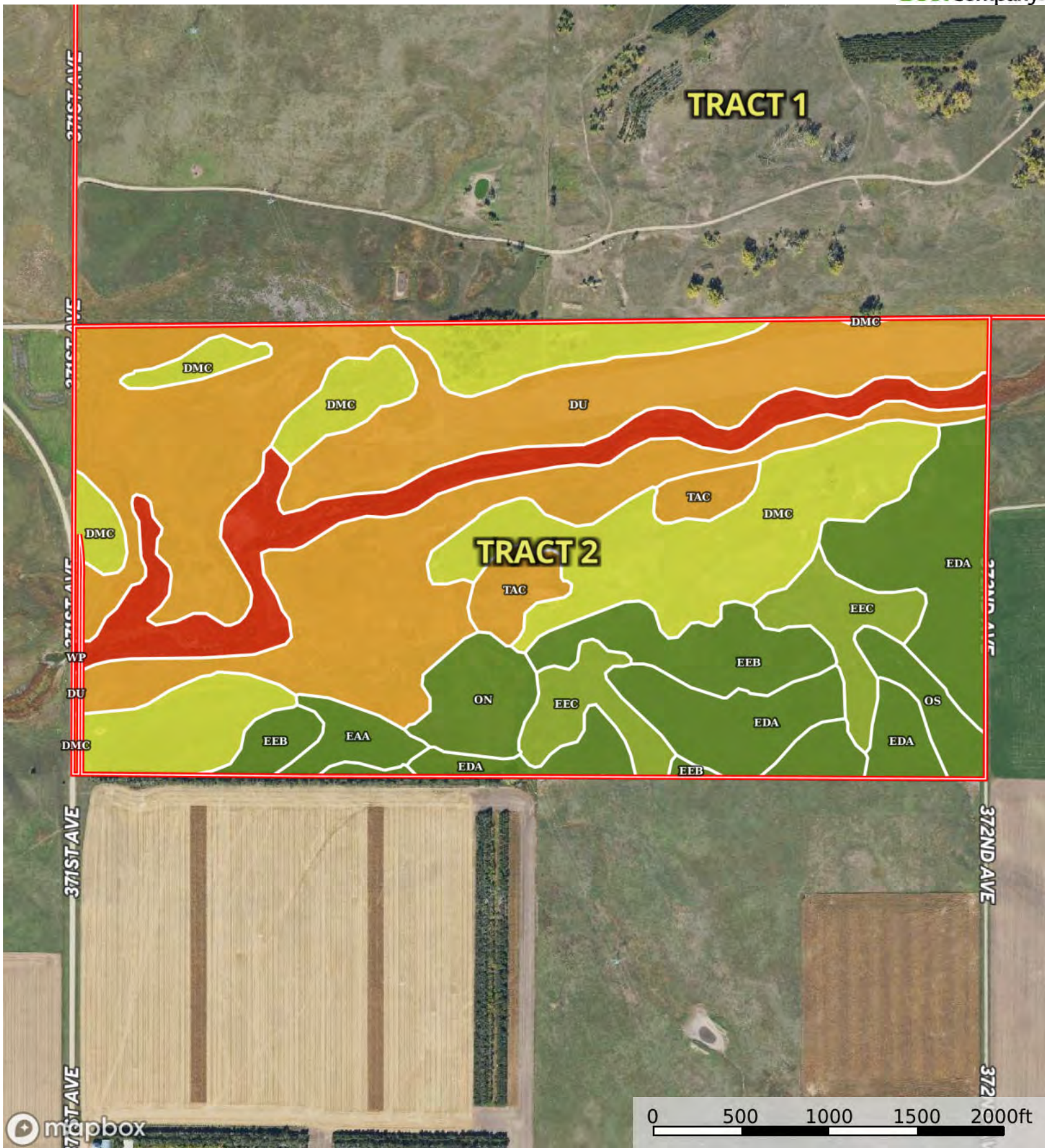
Grazing Cultivation

(c) climatic limitations (e) susceptibility to erosion

(s) soil limitations within the rooting zone (w) excess of water



 Boundary



|  Boundary 310.63 ac

SOIL CODE	SOIL DESCRIPTION	ACRES	%	CPI	NCCPI	CAP
Du	Durrstein silt loam	115.6 6	37.24	12	18	6s
DmC	Delmont-Talmo complex, 2 to 9 percent slopes	66.65	21.46	29	35	4e
EdA	Eakin-DeGrey silt loams, 0 to 4 percent slopes	39.45	12.7	72	58	2e
Wp	Worthing silty clay loam, ponded, 0 to 1 percent slopes	27.11	8.73	10	6	8w
EeB	Eakin-Ethan complex, 2 to 6 percent slopes	19.68	6.34	76	64	2e
EeC	Eakin-Ethan complex, 6 to 9 percent slopes	15.74	5.07	66	63	3e
On	Mobridge silt loam, 0 to 2 percent slopes	8.59	2.77	94	65	2c
TaC	Talmo gravelly sandy loam, 2 to 9 percent slopes	7.93	2.55	10	28	6s
Os	Onita-Hoven silt loams	5.1	1.64	73	47	2c
EaA	Eakin silt loam, 0 to 2 percent slopes	4.72	1.52	88	67	2c
TOTALS		310.6 3(*)	100%	34.26	33.65	4.59









(*) Total acres may differ in the second decimal compared to the sum of each acreage soil. This is due to a round error because we only show the acres of each soil with two decimal.

Capability Legend

Increased Limitations and Hazards

Decreased Adaptability and Freedom of Choice Users

Land, Capability

								
	1	2	3	4	5	6	7	8
'Wild Life'	•	•	•	•	•	•	•	•
Forestry	•	•	•	•	•	•	•	
Limited	•	•	•	•	•	•	•	
Moderate	•	•	•	•	•	•		
Intense	•	•	•	•	•			
Limited	•	•	•	•				
Moderate	•	•	•					
Intense	•	•						
Very Intense	•							

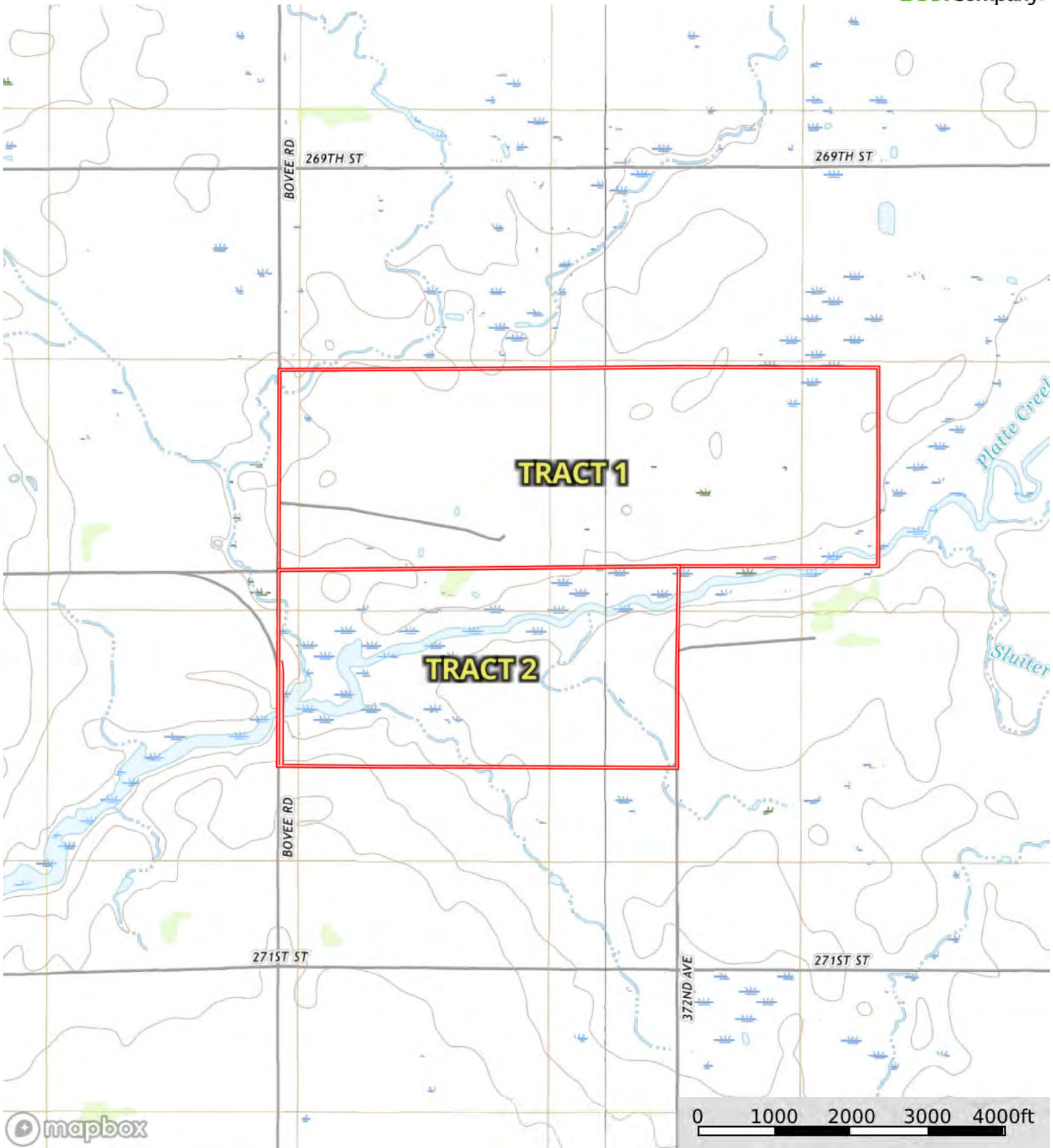
Grazing Cultivation


(c) climatic limitations (e) susceptibility to erosion

(s) soil limitations within the rooting zone (w) excess of water

L-2400406

Charles Mix County, South Dakota, 799.51 AC +/-



 Boundary