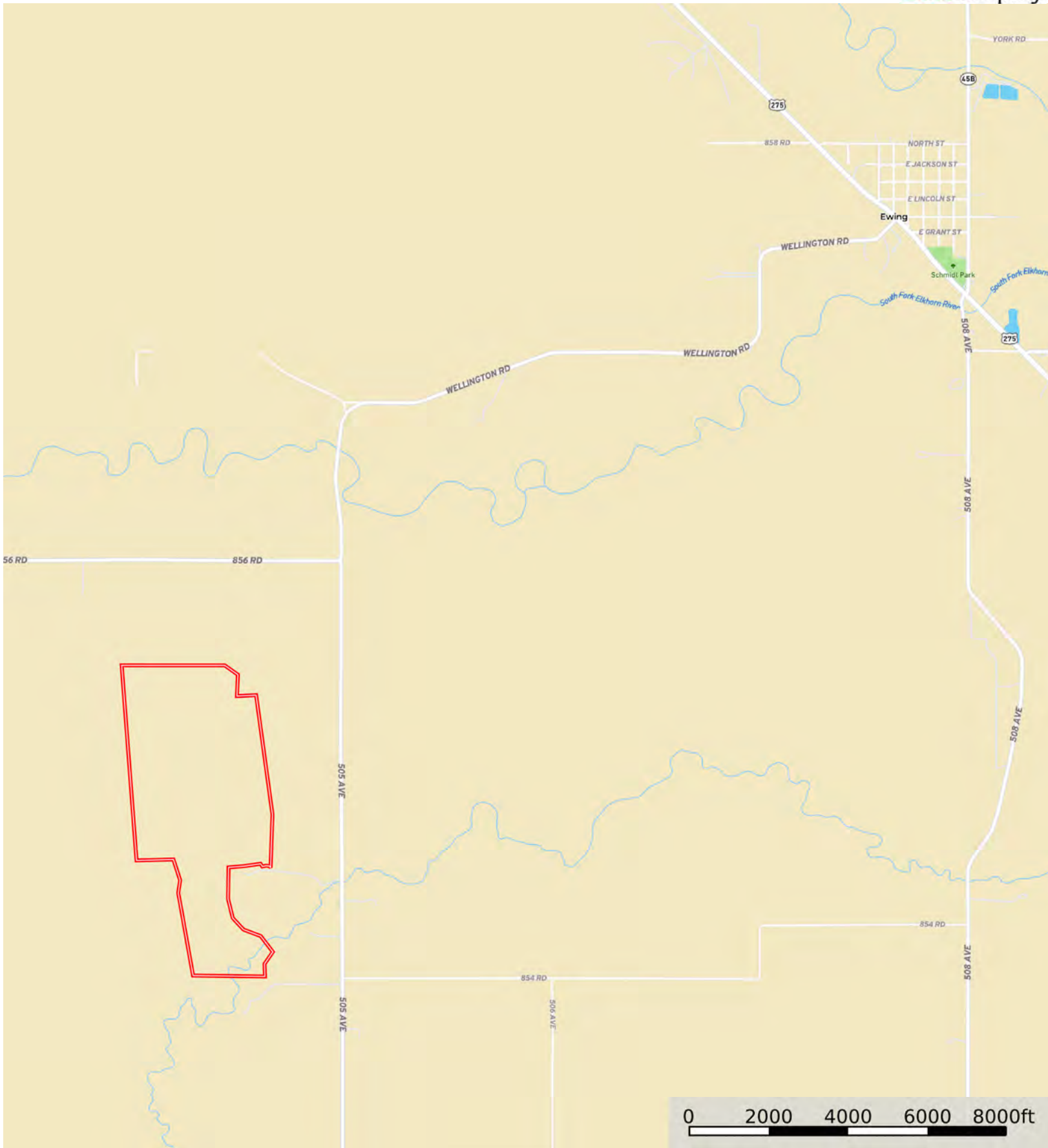


L-2400408

Holt County, Nebraska, 495 AC +/-

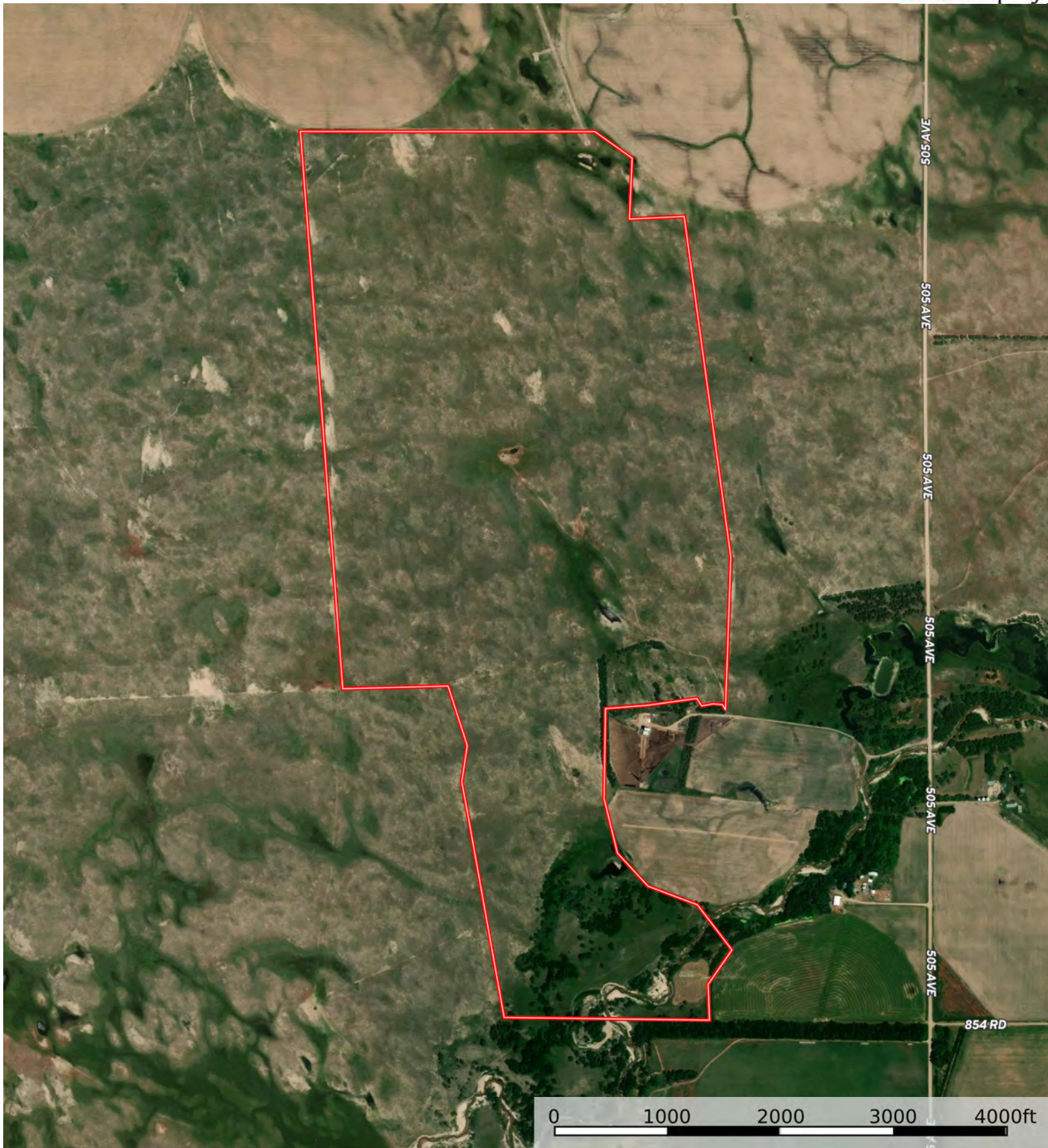


Boundary



The information contained herein was obtained from sources deemed to be reliable. Land id™ Services makes no warranties or guarantees as to the completeness or accuracy thereof.

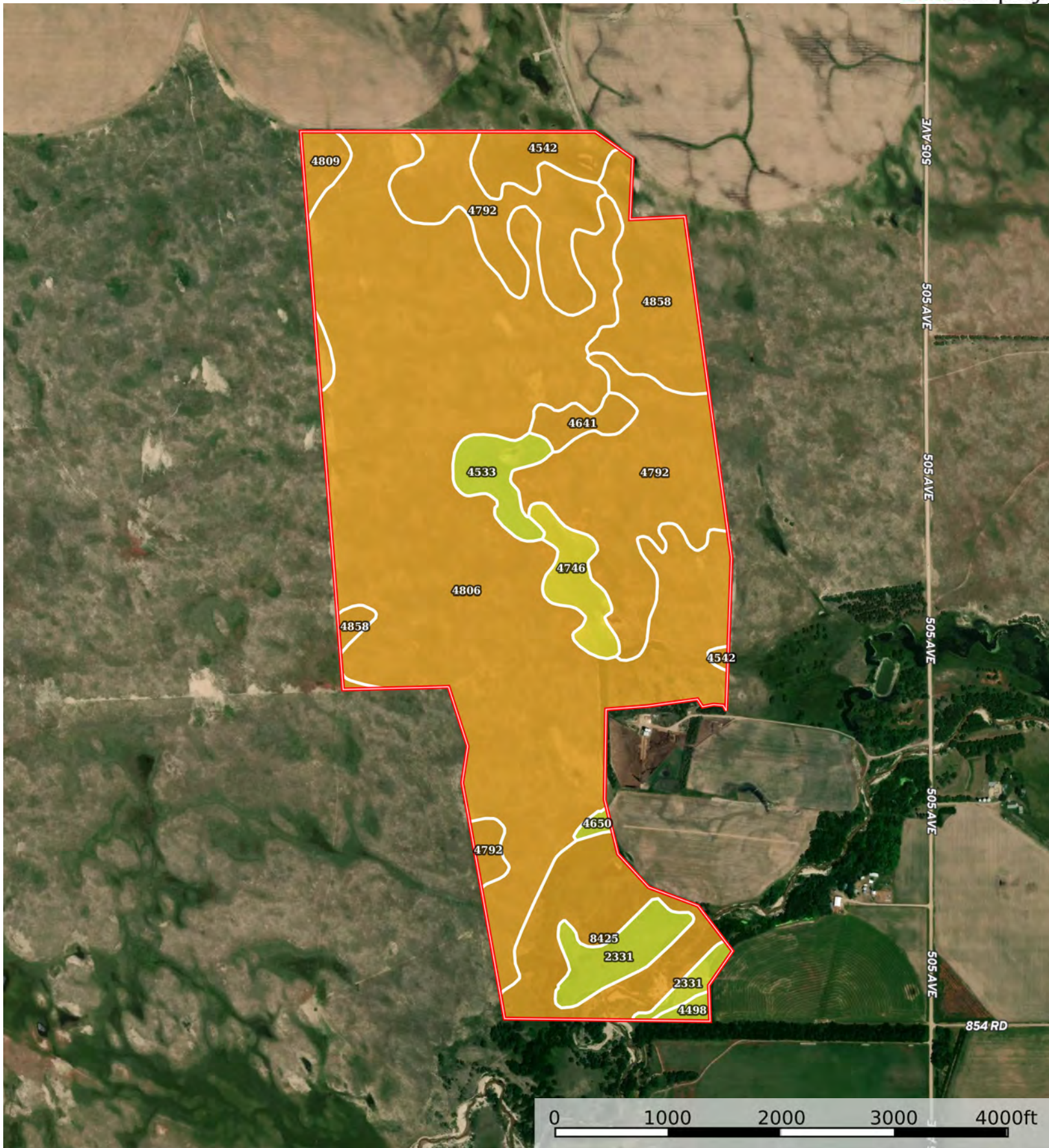




Boundary







Boundary



| Boundary 487.18 ac

SOIL CODE	SOIL DESCRIPTION	ACRES	%	CPI	NCCPI	CAP
4806	Valentine fine sand, rolling, 9 to 24 percent slopes, moist	272.6 2	55.96	0	25	6e
4792	Valentine fine sand, 3 to 9 percent slopes, moist	85.38	17.52	0	31	6e
8425	Boel-Inavale complex, channeled, frequently flooded	35.16	7.22	0	17	6w
4858	Valentine-Els complex, moist, 0 to 9 percent slopes	29.92	6.14	0	29	6e
2331	Inavale loamy fine sand, rarely flooded	15.5	3.18	0	27	4e
4542	Els-lpage complex, 0 to 3 percent slopes	12.67	2.6	0	26	6w
4746	Tryon loamy fine sand, 0 to 3 percent slopes	10.53	2.16	0	23	5w
4533	Els loamy sand, 0 to 3 percent slopes	10.34	2.12	0	30	4w
4809	Valentine fine sand, rolling and hilly, 9 to 60 percent slopes , moist	6.28	1.29	0	19	6e
4641	lpage fine sand, 0 to 3 percent slopes	5.91	1.21	53	25	6e
4498	Dunday loamy sand, 0 to 3 percent slopes	1.71	0.35	0	36	4e
4650	lpage loamy fine sand, 0 to 3 percent slopes	1.16	0.24	54	31	4e
TOTALS		487.1 8(*)	100%	0.77	25.85	5.86









(\*) Total acres may differ in the second decimal compared to the sum of each acreage soil. This is due to a round error because we only show the acres of each soil with two decimal.

## Capability Legend

Increased Limitations and Hazards

Decreased Adaptability and Freedom of Choice Users

Land, Capability

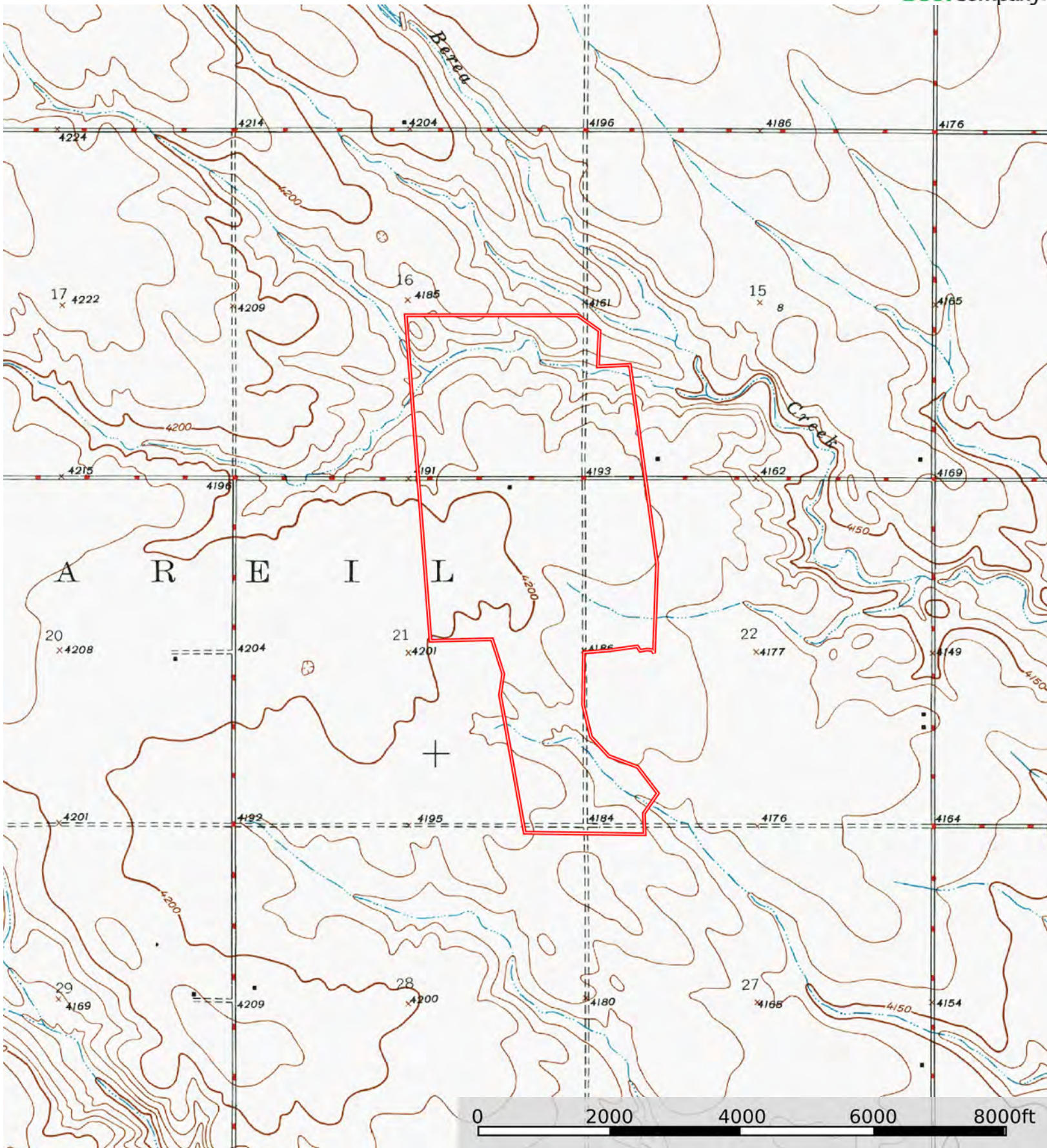
								
	1	2	3	4	5	6	7	8
'Wild Life'	•	•	•	•	•	•	•	•
Forestry	•	•	•	•	•	•	•	
Limited	•	•	•	•	•	•	•	
Moderate	•	•	•	•	•	•		
Intense	•	•	•	•	•			
Limited	•	•	•	•				
Moderate	•	•	•					
Intense	•	•						
Very Intense	•							

### Grazing Cultivation

(c) climatic limitations (e) susceptibility to erosion

(s) soil limitations within the rooting zone (w) excess of water





Boundary

