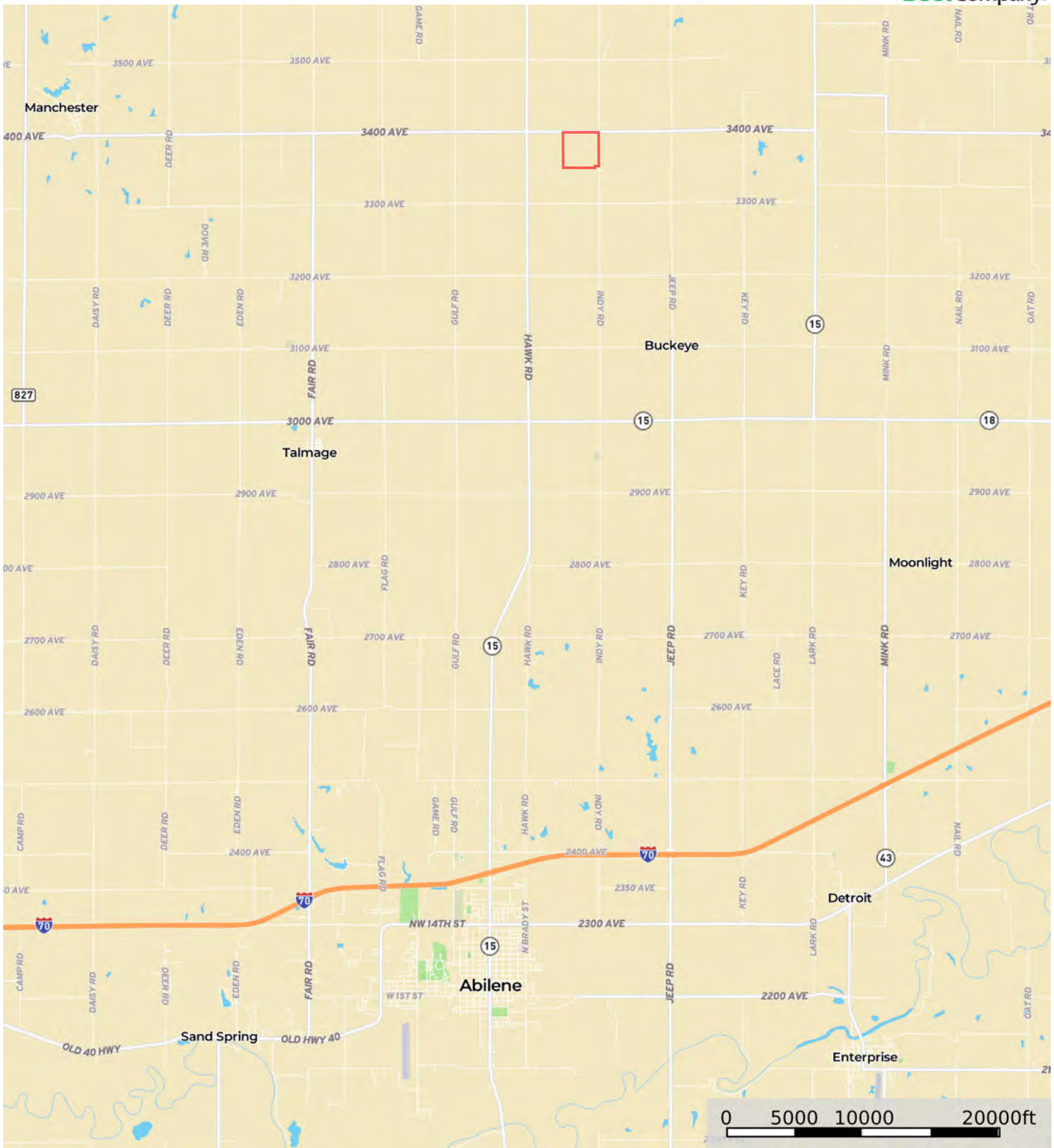


L-2400409

Dickinson County, Kansas, 159 AC +/-

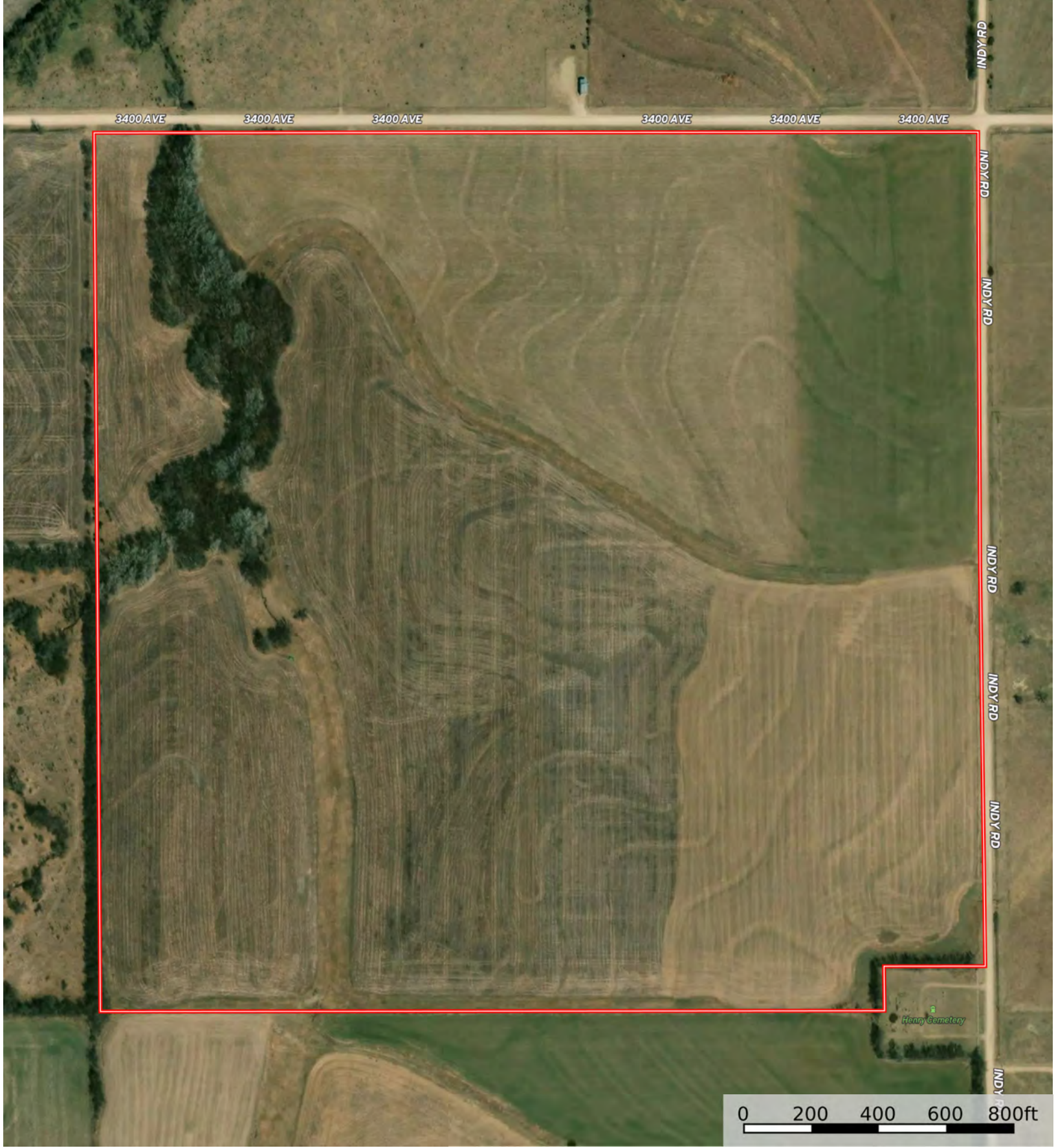


Boundary



The information contained herein was obtained from sources deemed to be reliable. Land id™ Services makes no warranties or guarantees as to the completeness or accuracy thereof.





Boundary





Boundary

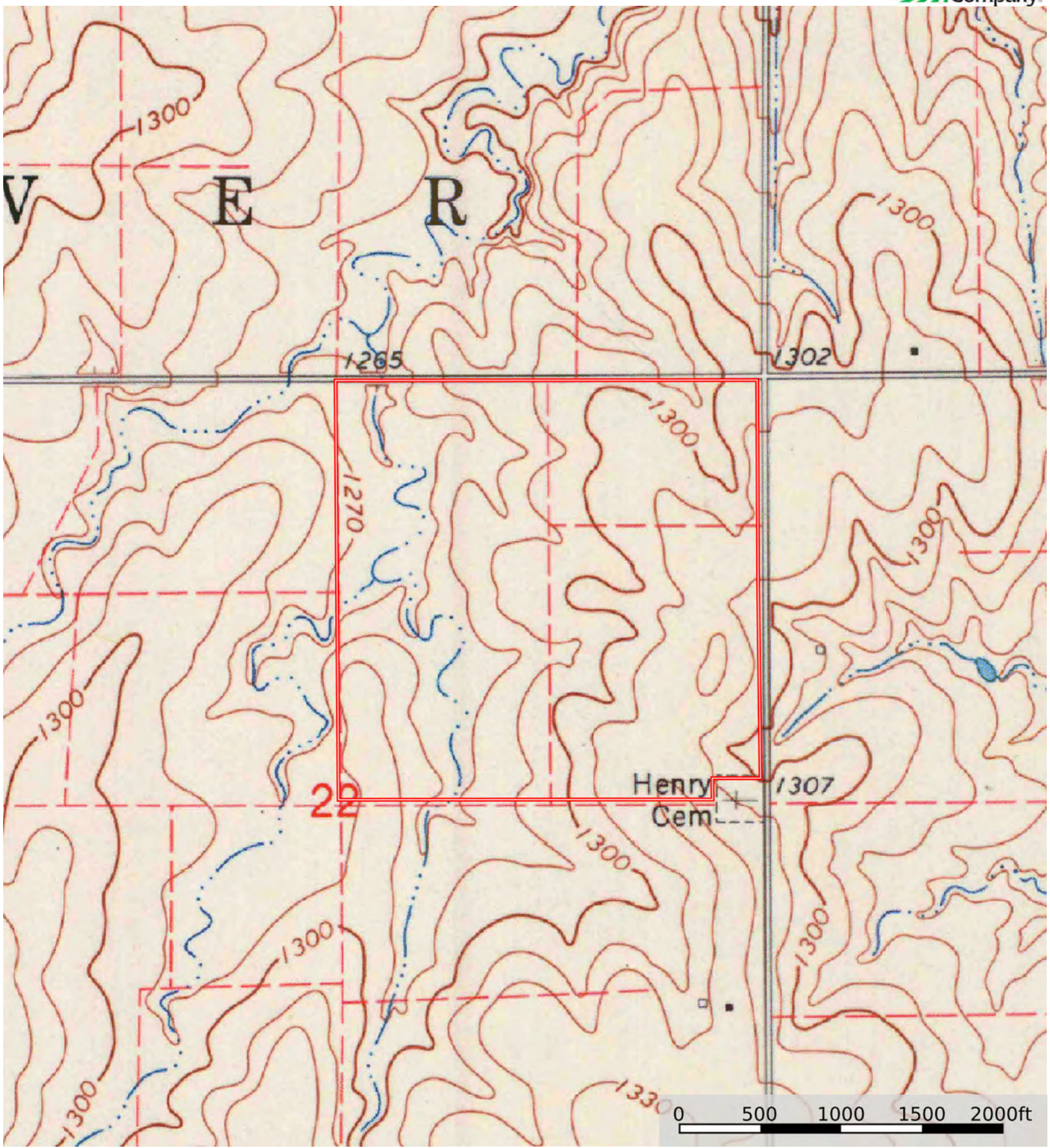
| Boundary 155.79 ac

SOIL CODE	SOIL DESCRIPTION	ACRES	%	CPI	NCCPI	CAP
3830	Crete silty clay loam, 3 to 7 percent slopes	56.6	36.33	0	61	3e
4673	Irwin silty clay loam, 3 to 7 percent slopes	52.04	33.4	0	59	4e
3828	Crete silty clay loam, 1 to 3 percent slopes	37	23.75	0	63	2e
3561	Hobbs silt loam, occasionally flooded	10.15	6.52	0	82	2w
TOTALS		155.79(*)	100%	-	62.18	3.03

(\*) Total acres may differ in the second decimal compared to the sum of each acreage soil. This is due to a round error because we only show the acres of each soil with two decimal.







Boundary