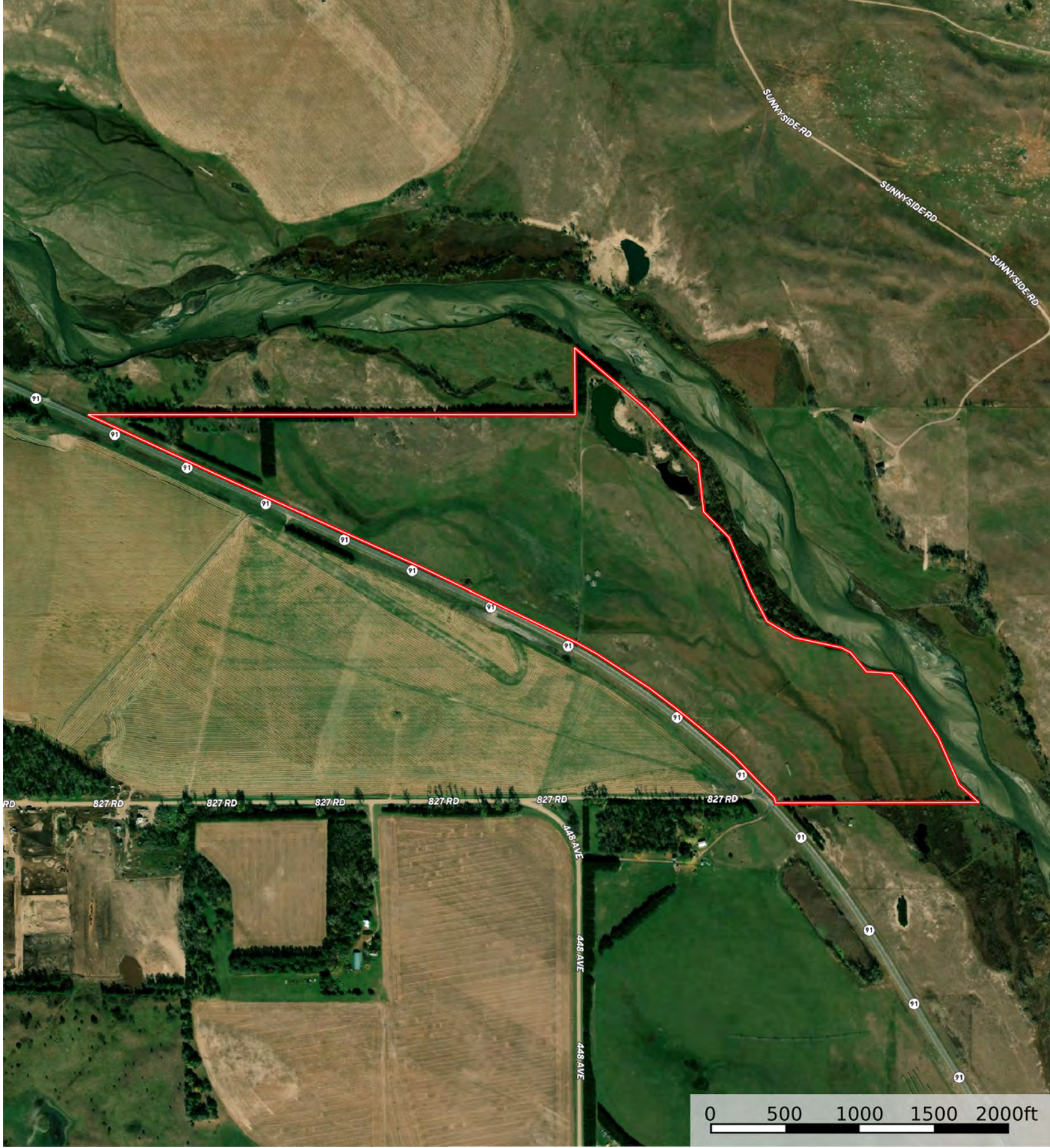


Boundary





Boundary



Boundary

| Boundary 133.86 ac

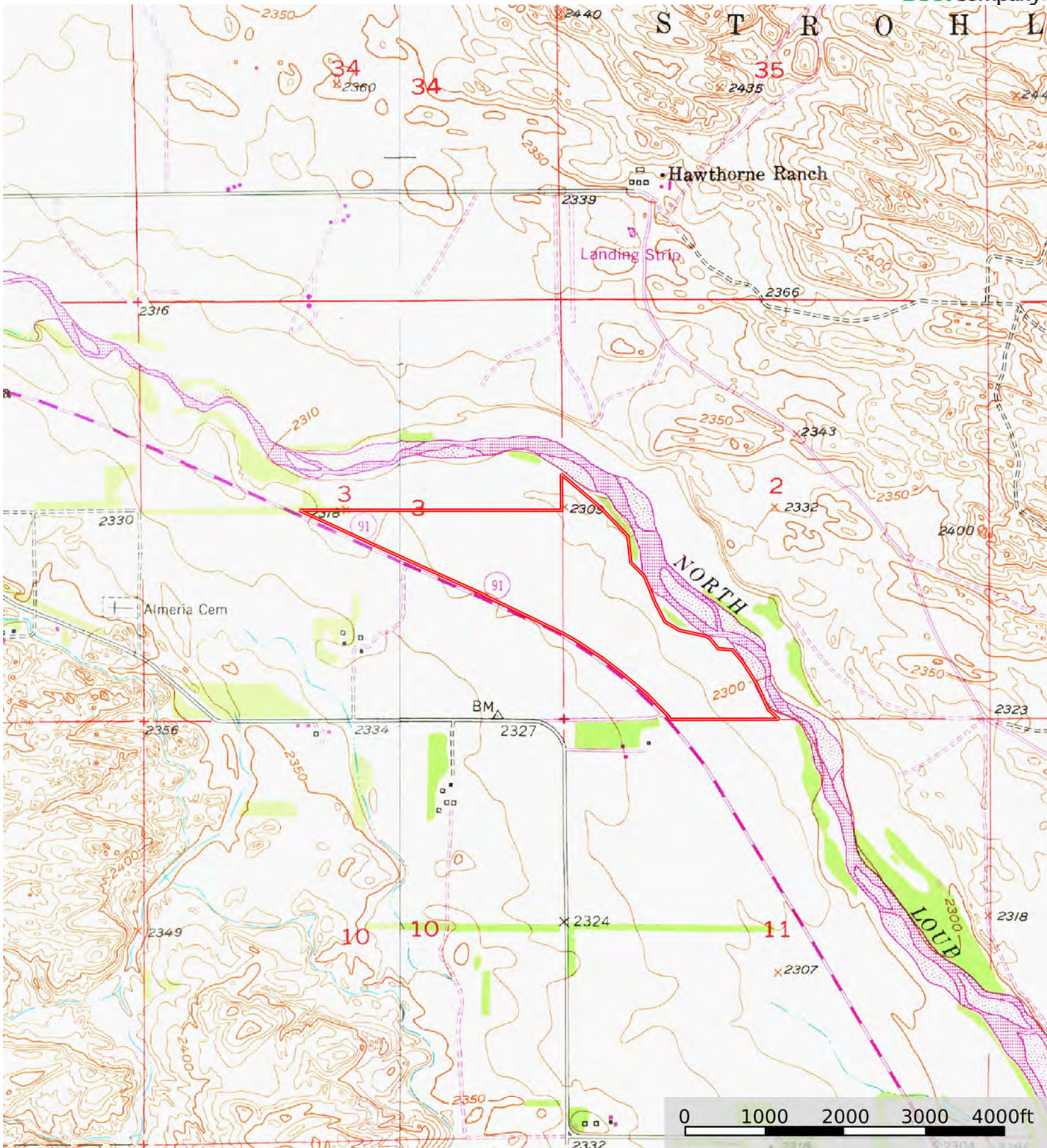
SOIL CODE	SOIL DESCRIPTION	ACRES	%	CPI	NCCPI	CAP
4223	Bolent loamy fine sand, occasionally flooded	46.61	34.82	1	20	6w
4232	Calamus loamy fine sand, rarely flooded	36.19	27.04	0	30	6e
4265	Loup fine sandy loam, occasionally flooded	28.76	21.49	0	28	5w
4365	lpage loamy fine sand, terrace, 0 to 3 percent slopes	13.61	10.17	0	28	4e
4246	Ord very fine sandy loam, rarely flooded	5.22	3.9	0	47	2w
9999	Water	2.67	1.99	0	-	-
4364	lpage fine sand, terrace, 0 to 3 percent slopes	0.48	0.36	0	25	6e
8929	Simeon sand, 0 to 3 percent slopes	0.27	0.2	0	25	6s
4200	Almeria fine sandy loam, channeled, frequently flooded, 0 to 2 percent slopes	0.05	0.04	0	5	6w
TOTALS		133.86(*)	100%	0.35	25.91	5.41

(*) Total acres may differ in the second decimal compared to the sum of each acreage soil. This is due to a round error because we only show the acres of each soil with two decimal.



L-2400410

Loup County, Nebraska, 138.64 AC +/-



Boundary



The information contained herein was obtained from sources deemed to be reliable. Land id™ Services makes no warranties or guarantees as to the completeness or accuracy thereof.