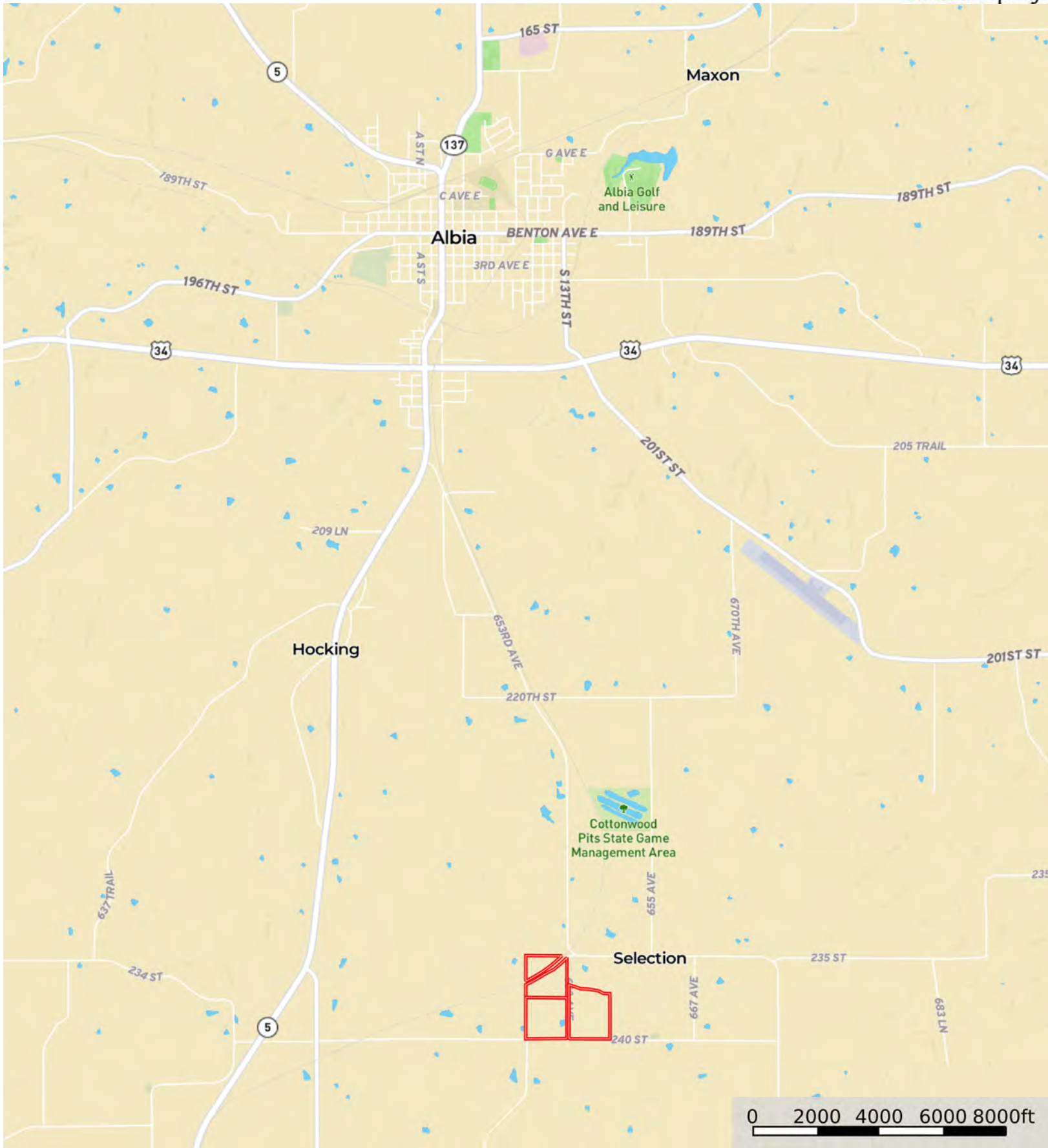
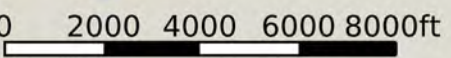


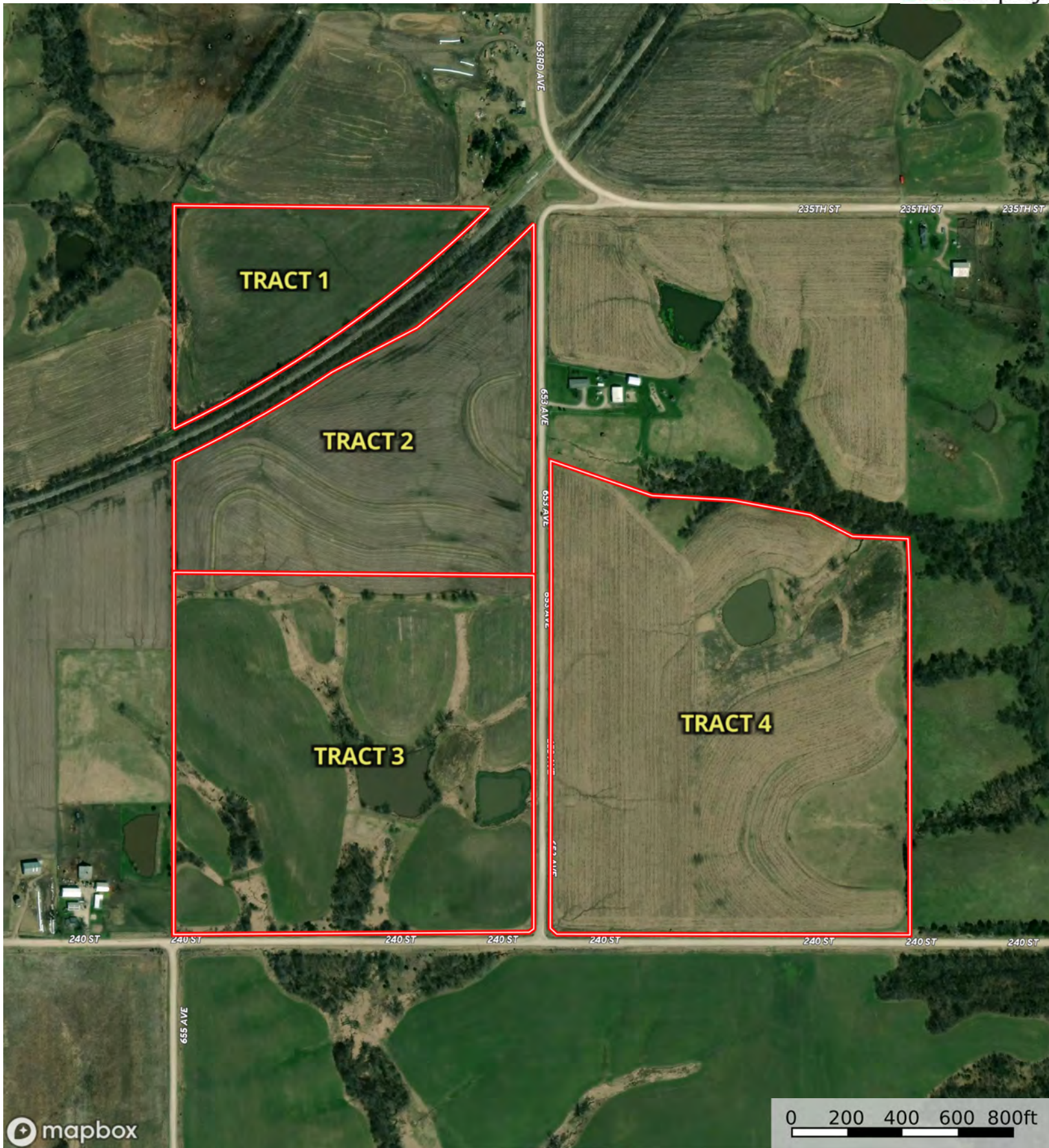
L-2400416

Monroe County, Iowa, 123.08 AC +/-

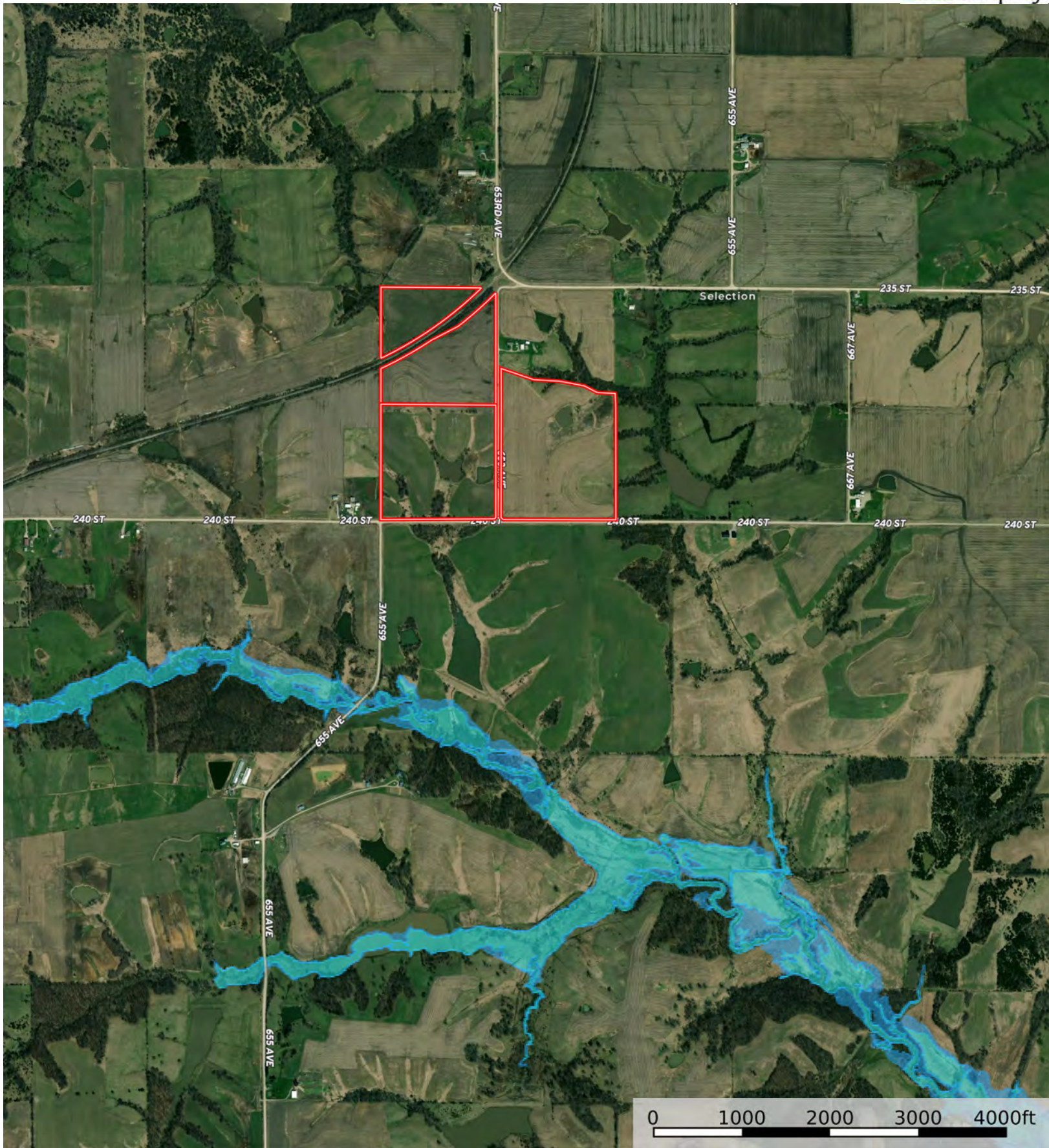


Boundary





Boundary



- Boundary
- 100 Year Floodplain
- 500 Year Floodplain
- Floodway
- Special
- Unmapped/ Not Included



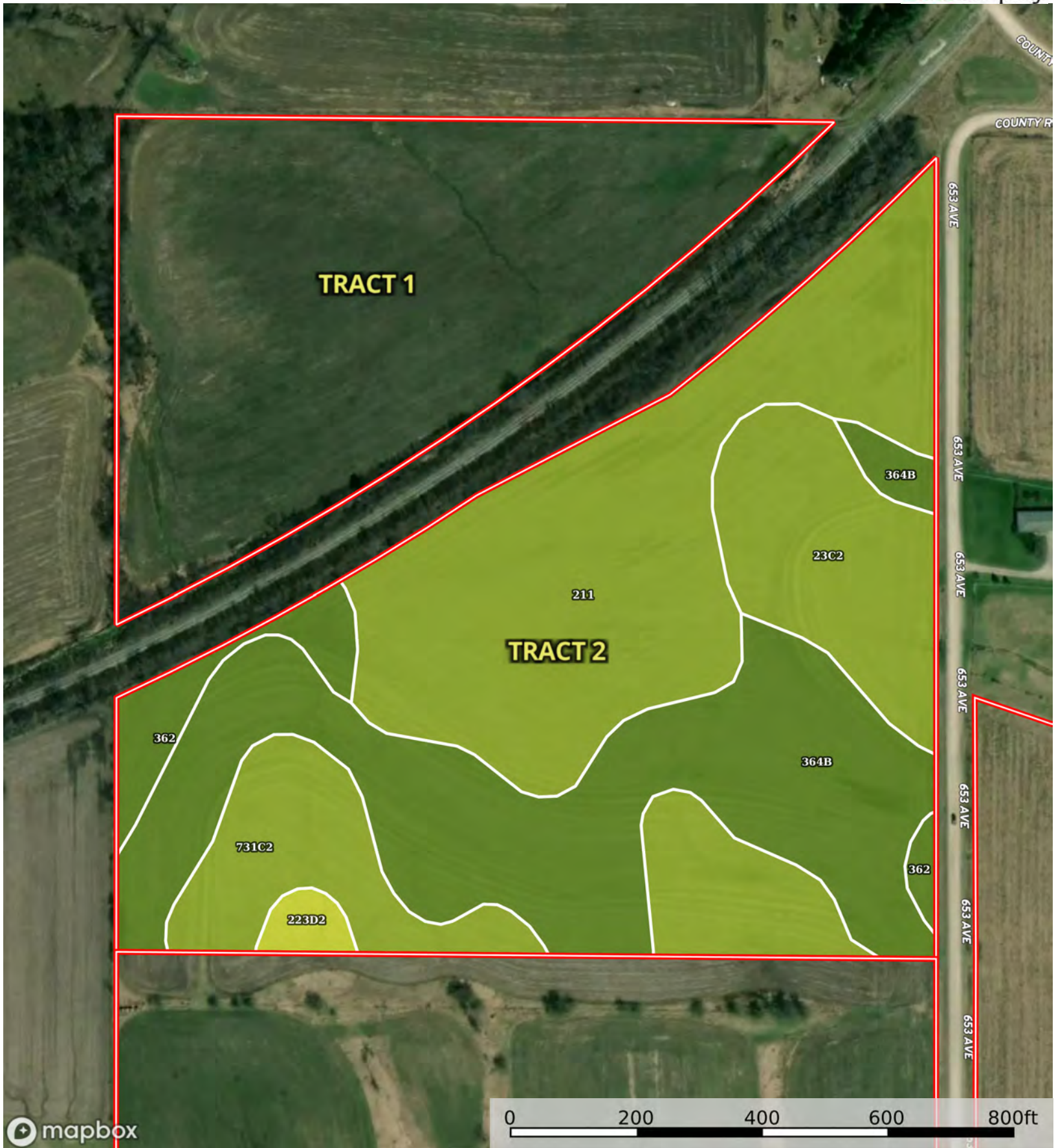
Boundary

| Boundary 11.83 ac

SOIL CODE	SOIL DESCRIPTION	ACRES	%	CSR2	CPI	NCCPI	CAP
731C2	Pershing silty clay loam, 5 to 9 percent slopes, moderately eroded	3.72	31.45	62.0	0	69	3e
211	Edina silt loam, 0 to 1 percent slopes	3.34	28.23	59.0	0	70	3w
364B	Grundy silty clay loam, 2 to 5 percent slopes	2.88	24.34	72.0	0	80	2e
223D2	Rinda silty clay loam, 9 to 14 percent slopes, moderately eroded	1.33	11.24	19.0	0	57	4e
362	Haig silty clay loam, 0 to 2 percent slopes	0.56	4.73	83.0	0	74	2w
TOTALS		11.83(*)	100%	59.75	-	70.85	2.82

(*) Total acres may differ in the second decimal compared to the sum of each acreage soil. This is due to a round error because we only show the acres of each soil with two decimal.





mapbox

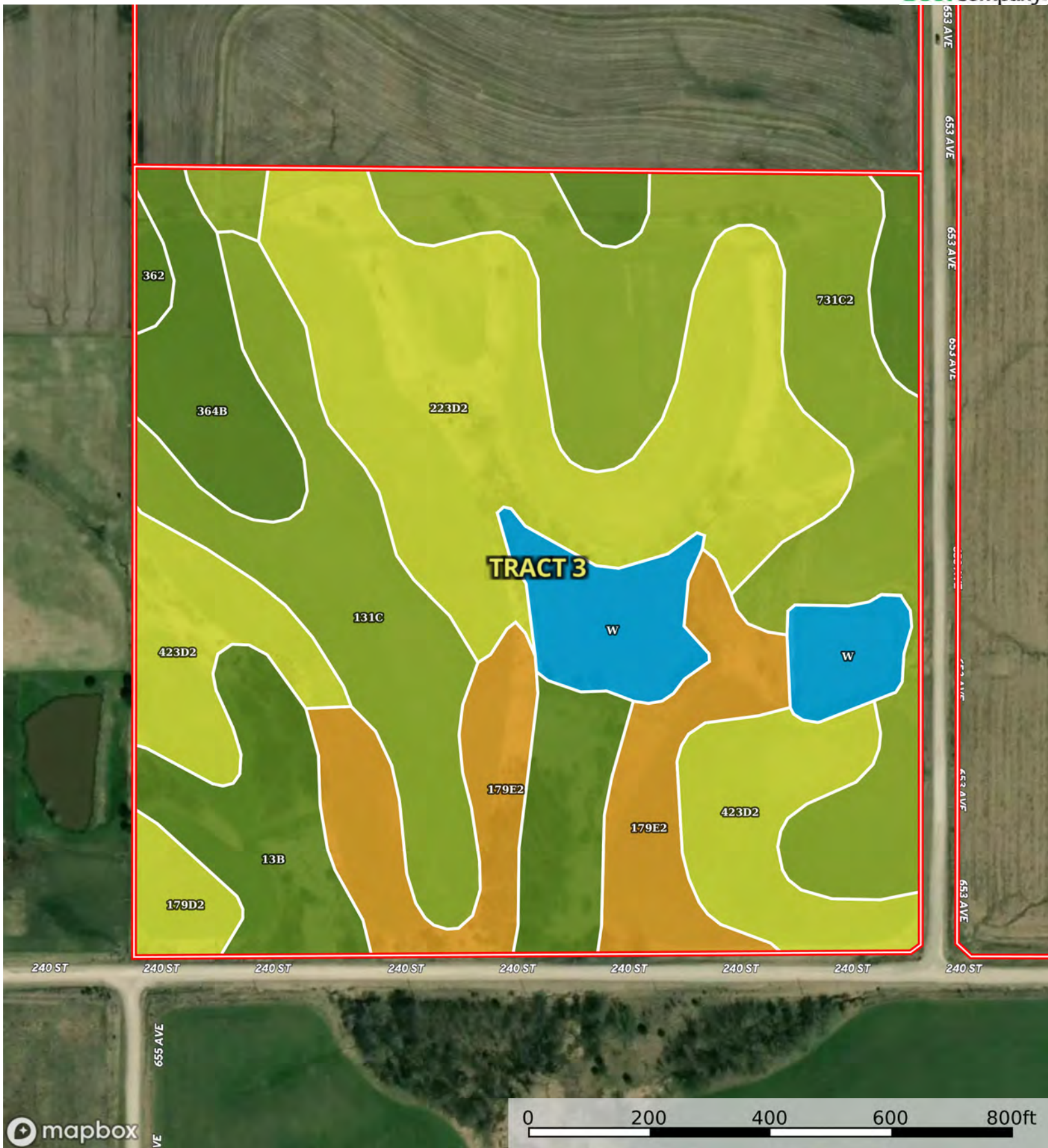
Boundary

| Boundary 23.58 ac

SOIL CODE	SOIL DESCRIPTION	ACRES	%	CSR2	CPI	NCCPI	CAP
211	Edina silt loam, 0 to 1 percent slopes	8.08	34.27	59.0	0	70	3w
364B	Grundy silty clay loam, 2 to 5 percent slopes	7.86	33.33	72.0	0	80	2e
731C2	Pershing silty clay loam, 5 to 9 percent slopes, moderately eroded	3.52	14.93	62.0	0	69	3e
23C2	Arispe silty clay loam, 5 to 9 percent slopes, moderately eroded	2.79	11.83	62.0	0	76	3e
362	Haig silty clay loam, 0 to 2 percent slopes	1.04	4.41	83.0	0	74	2w
223D2	Rinda silty clay loam, 9 to 14 percent slopes, moderately eroded	0.29	1.23	19.0	0	57	4e
TOTALS		23.58(*)	100%	64.7	-	73.91	2.63

(*) Total acres may differ in the second decimal compared to the sum of each acreage soil. This is due to a round error because we only show the acres of each soil with two decimal.





Boundary

| Boundary 39.02 ac

SOIL CODE	SOIL DESCRIPTION	ACRES	%	CSR2	CPI	NCCPI	CAP
223D2	Rinda silty clay loam, 9 to 14 percent slopes, moderately eroded	8.6	22.03	19.0	0	57	4e
731C2	Pershing silty clay loam, 5 to 9 percent slopes, moderately eroded	7.76	19.88	62.0	0	69	3e
179E2	Gara loam, 14 to 18 percent slopes, moderately eroded	4.36	11.17	35.0	0	68	6e
131C	Pershing silt loam, 5 to 9 percent slopes	4.26	10.91	65.0	0	73	3e
423D2	Bucknell silty clay loam, 9 to 14 percent slopes, moderately eroded	4.13	10.58	6.0	0	63	4e
13B	Olmitz-Colo-Vesser complex, 2 to 5 percent slopes	3.75	9.61	82.0	0	75	2e
364B	Grundy silty clay loam, 2 to 5 percent slopes	2.95	7.56	72.0	0	80	2e
W	Water	2.29	5.87	-	0	-	-
179D2	Gara loam, 9 to 14 percent slopes, moderately eroded	0.69	1.77	43.0	0	72	4e
362	Haig silty clay loam, 0 to 2 percent slopes	0.23	0.59	83.0	0	74	2w
TOTALS		39.02(*)	100%	42.71	-	63.45	3.53









(*) Total acres may differ in the second decimal compared to the sum of each acreage soil. This is due to a round error because we only show the acres of each soil with two decimal.

Capability Legend

Increased Limitations and Hazards

Decreased Adaptability and Freedom of Choice Users

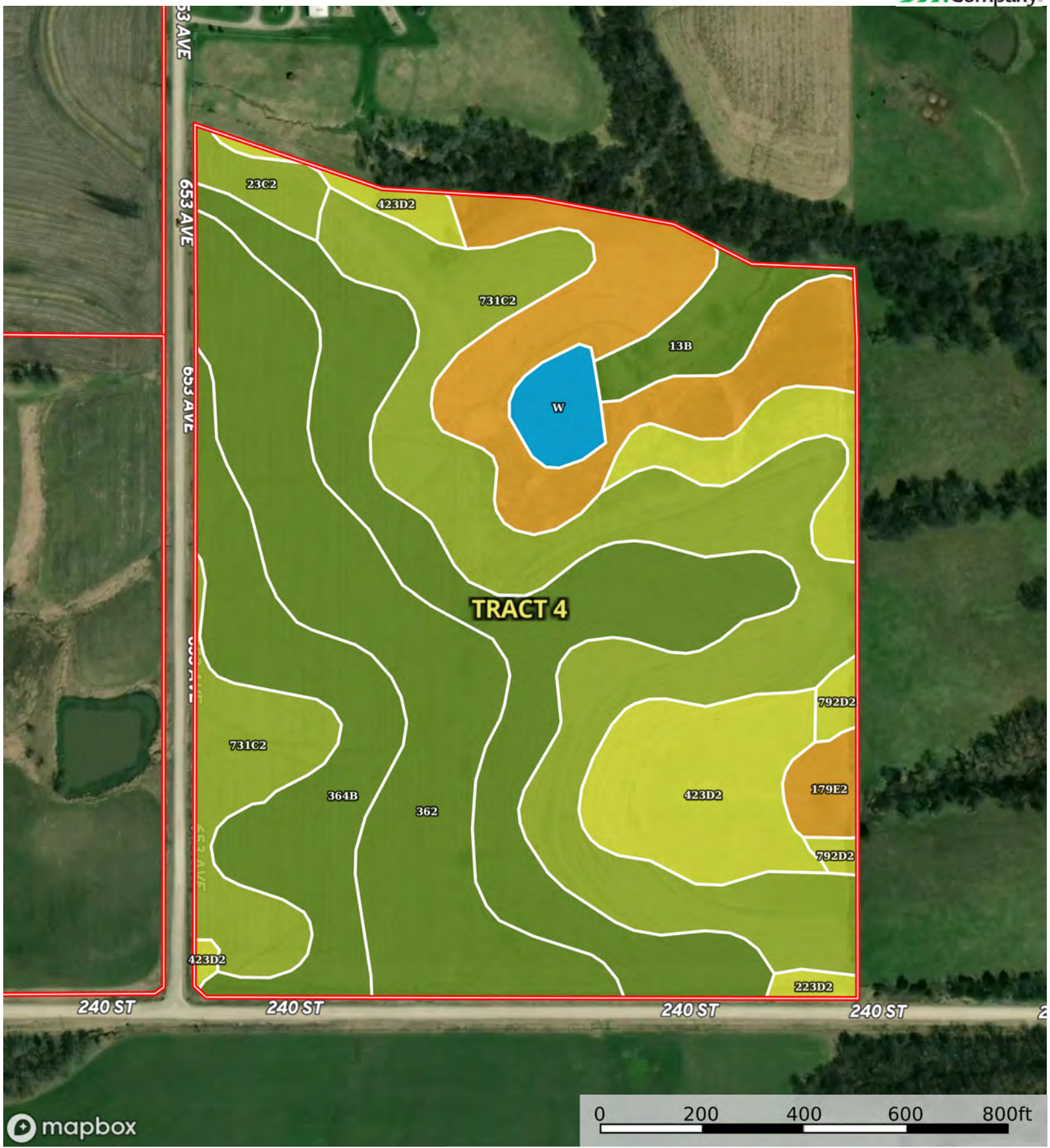
Land, Capability

								
	1	2	3	4	5	6	7	8
'Wild Life'	•	•	•	•	•	•	•	•
Forestry	•	•	•	•	•	•	•	
Limited	•	•	•	•	•	•	•	
Moderate	•	•	•	•	•	•		
Intense	•	•	•	•	•			
Limited	•	•	•	•				
Moderate	•	•	•					
Intense	•	•						
Very Intense	•							

Grazing Cultivation

(c) climatic limitations (e) susceptibility to erosion

(s) soil limitations within the rooting zone (w) excess of water



Boundary

| Boundary 46.63 ac

SOIL CODE	SOIL DESCRIPTION	ACRES	%	CSR2	CPI	NCCPI	CAP
731C2	Pershing silty clay loam, 5 to 9 percent slopes, moderately eroded	12.5	26.81	62.0	0	69	3e
364B	Grundy silty clay loam, 2 to 5 percent slopes	12.08	25.91	72.0	0	80	2e
362	Haig silty clay loam, 0 to 2 percent slopes	8.08	17.33	83.0	0	74	2w
179E2	Gara loam, 14 to 18 percent slopes, moderately eroded	5.65	12.12	35.0	0	68	6e
423D2	Bucknell silty clay loam, 9 to 14 percent slopes, moderately eroded	3.69	7.91	6.0	0	63	4e
792D2	Armstrong loam, 9 to 14 percent slopes, moderately eroded	1.75	3.75	9.0	0	63	4e
13B	Olmitz-Colo-Vesser complex, 2 to 5 percent slopes	1.25	2.68	82.0	0	75	2e
W	Water	0.76	1.63	-	0	-	-
23C2	Arispe silty clay loam, 5 to 9 percent slopes, moderately eroded	0.66	1.42	62.0	0	76	3e
223D2	Rinda silty clay loam, 9 to 14 percent slopes, moderately eroded	0.21	0.45	19.0	0	57	4e
TOTALS		46.63(*)	100%	57.87	-	70.98	3.03









(*) Total acres may differ in the second decimal compared to the sum of each acreage soil. This is due to a round error because we only show the acres of each soil with two decimal.

Capability Legend

Increased Limitations and Hazards

Decreased Adaptability and Freedom of Choice Users

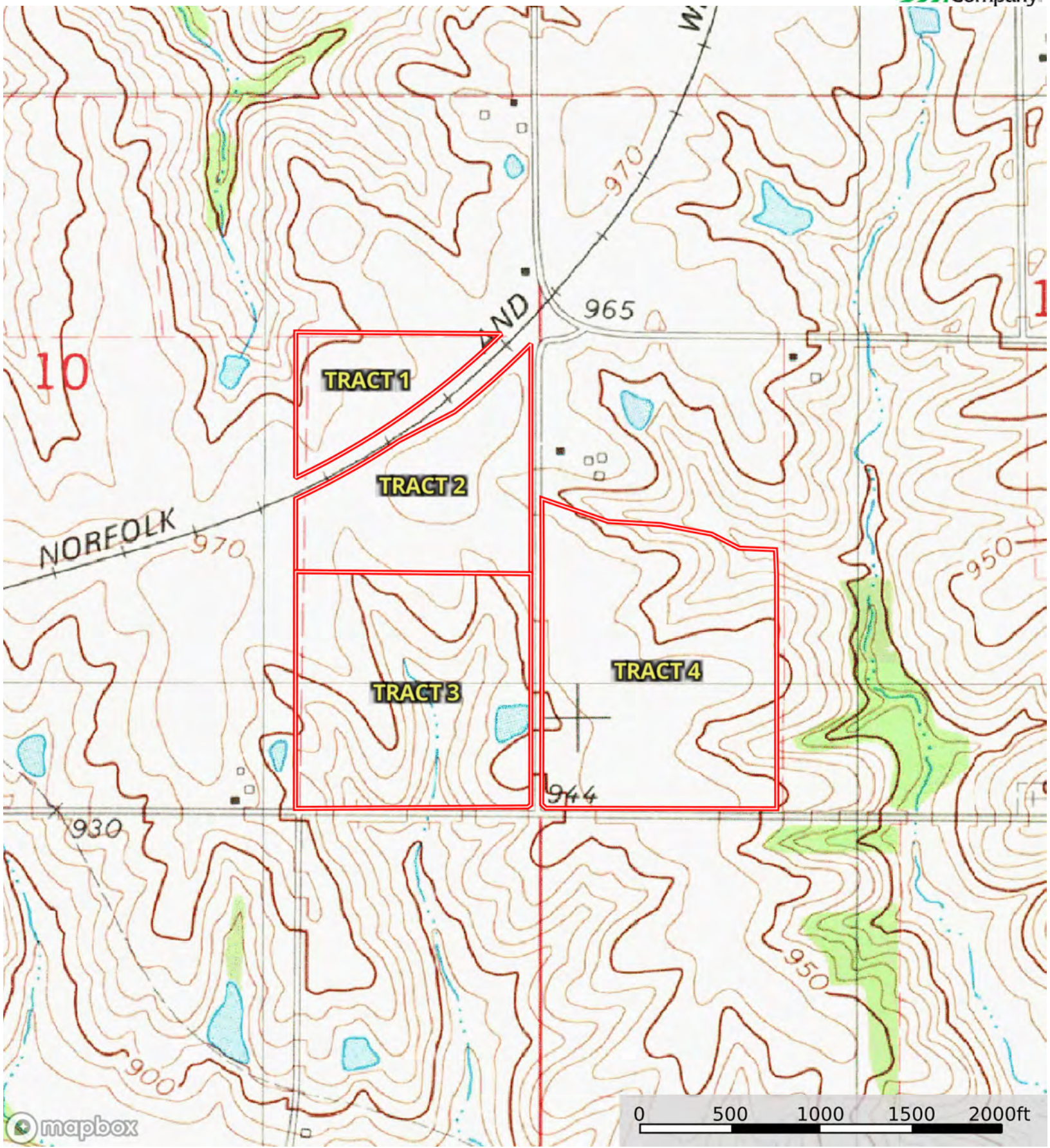
Land, Capability

								
	1	2	3	4	5	6	7	8
'Wild Life'	•	•	•	•	•	•	•	•
Forestry	•	•	•	•	•	•	•	
Limited	•	•	•	•	•	•	•	
Moderate	•	•	•	•	•	•		
Intense	•	•	•	•	•			
Limited	•	•	•	•				
Moderate	•	•	•					
Intense	•	•						
Very Intense	•							

Grazing Cultivation

(c) climatic limitations (e) susceptibility to erosion

(s) soil limitations within the rooting zone (w) excess of water



Boundary