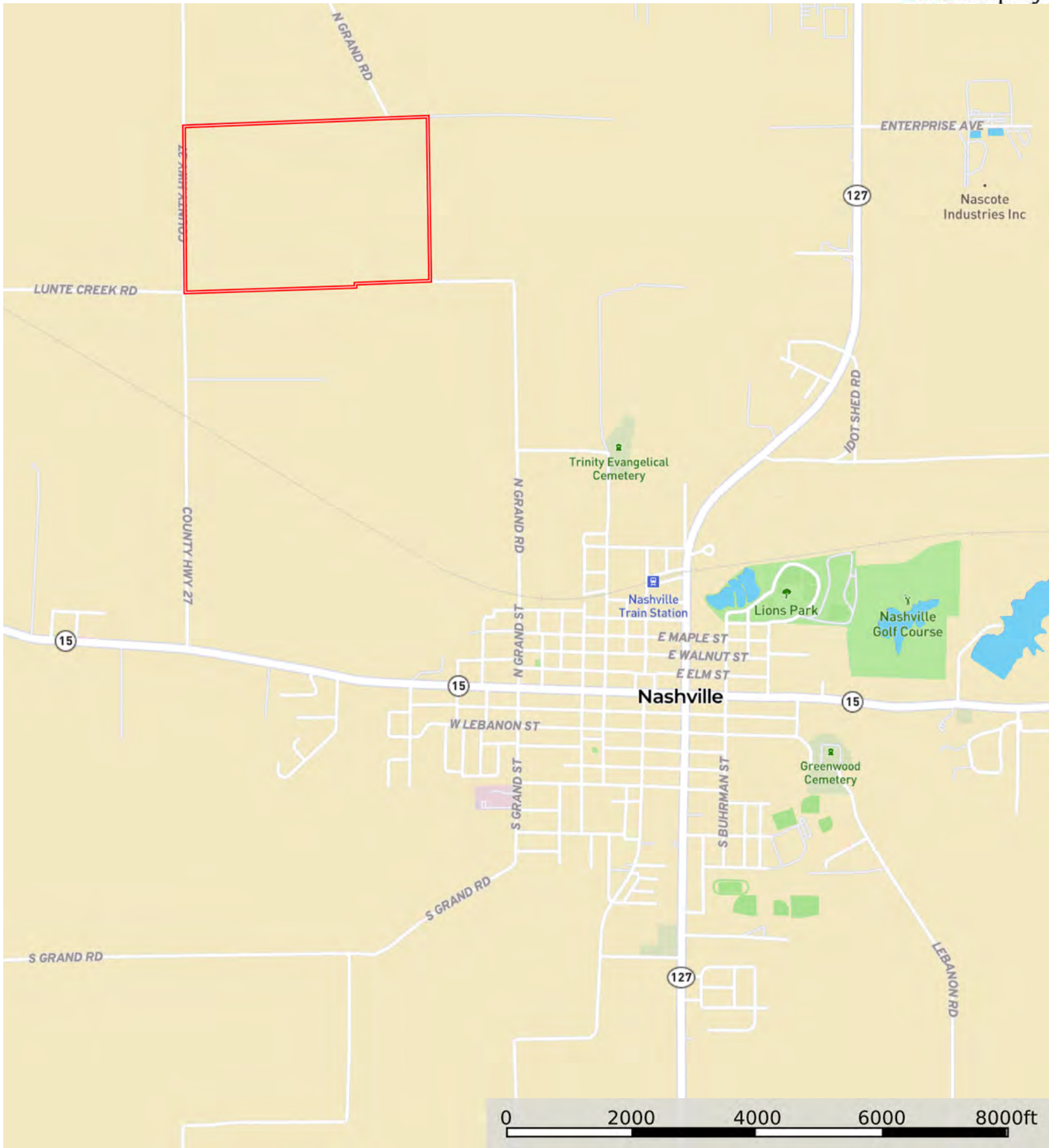


L-2400417

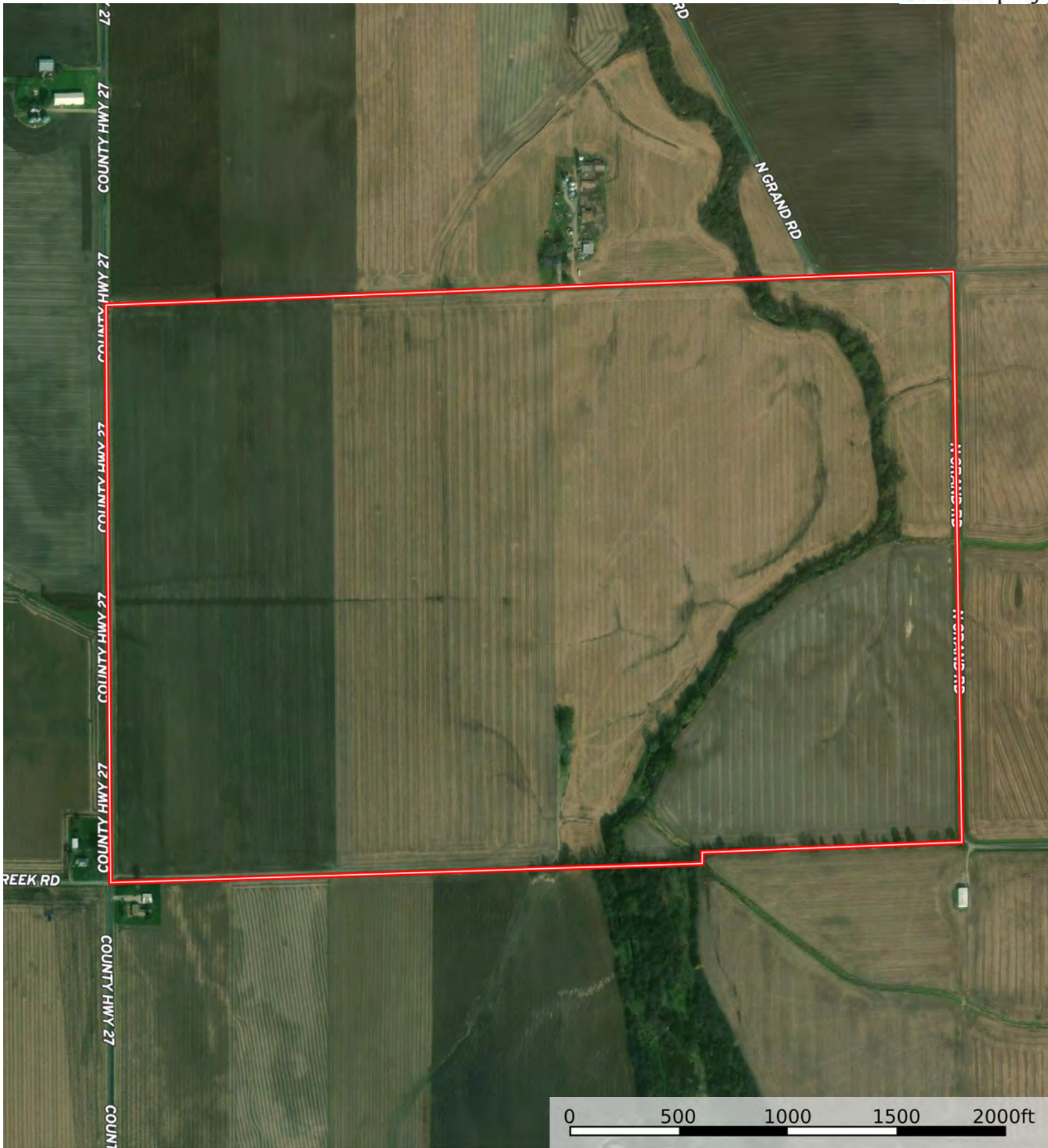
Washington County, Illinois, 238 AC +/-



Boundary

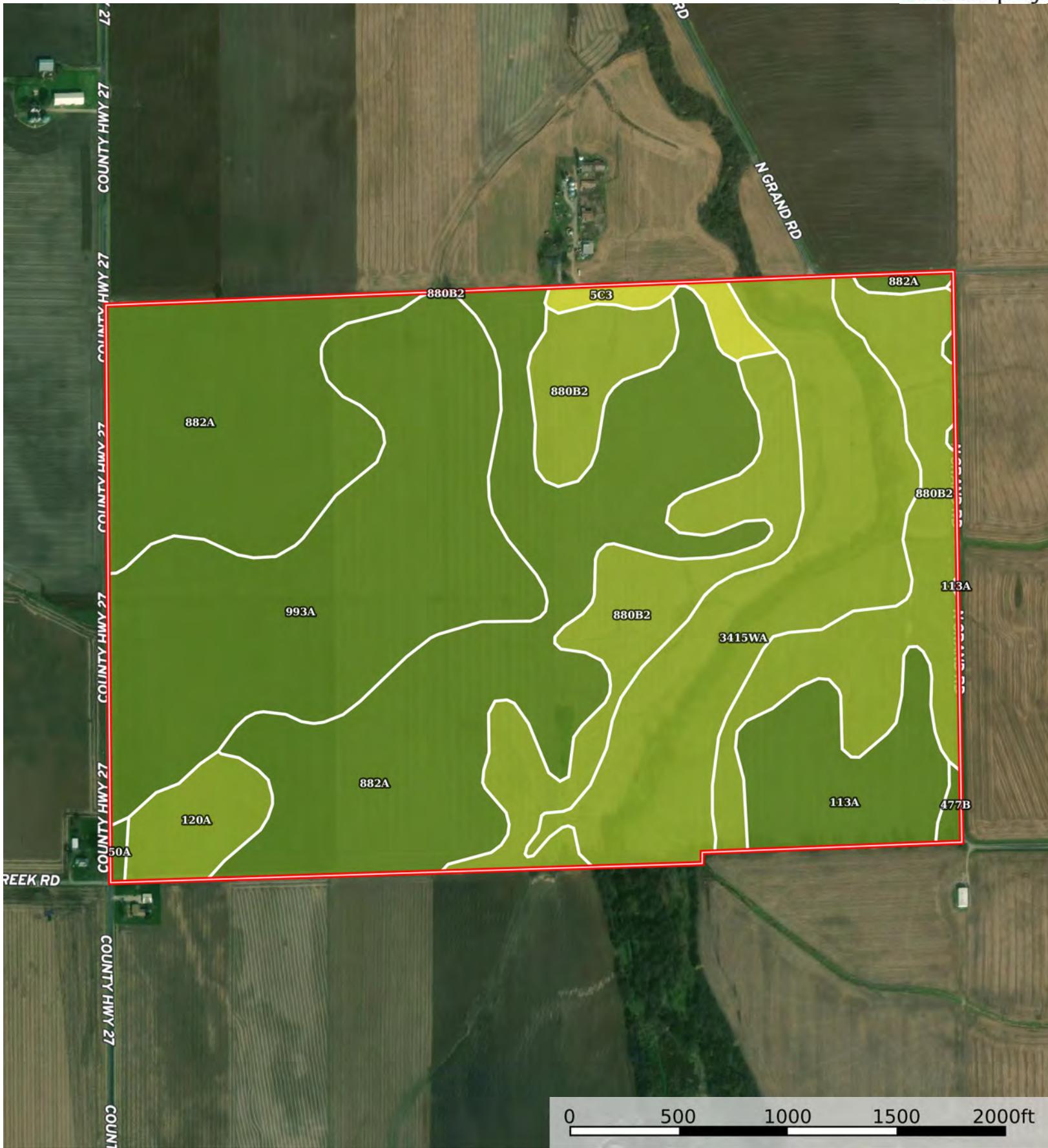


The information contained herein was obtained from sources deemed to be reliable. Land id™ Services makes no warranties or guarantees as to the completeness or accuracy thereof.



Boundary





Boundary

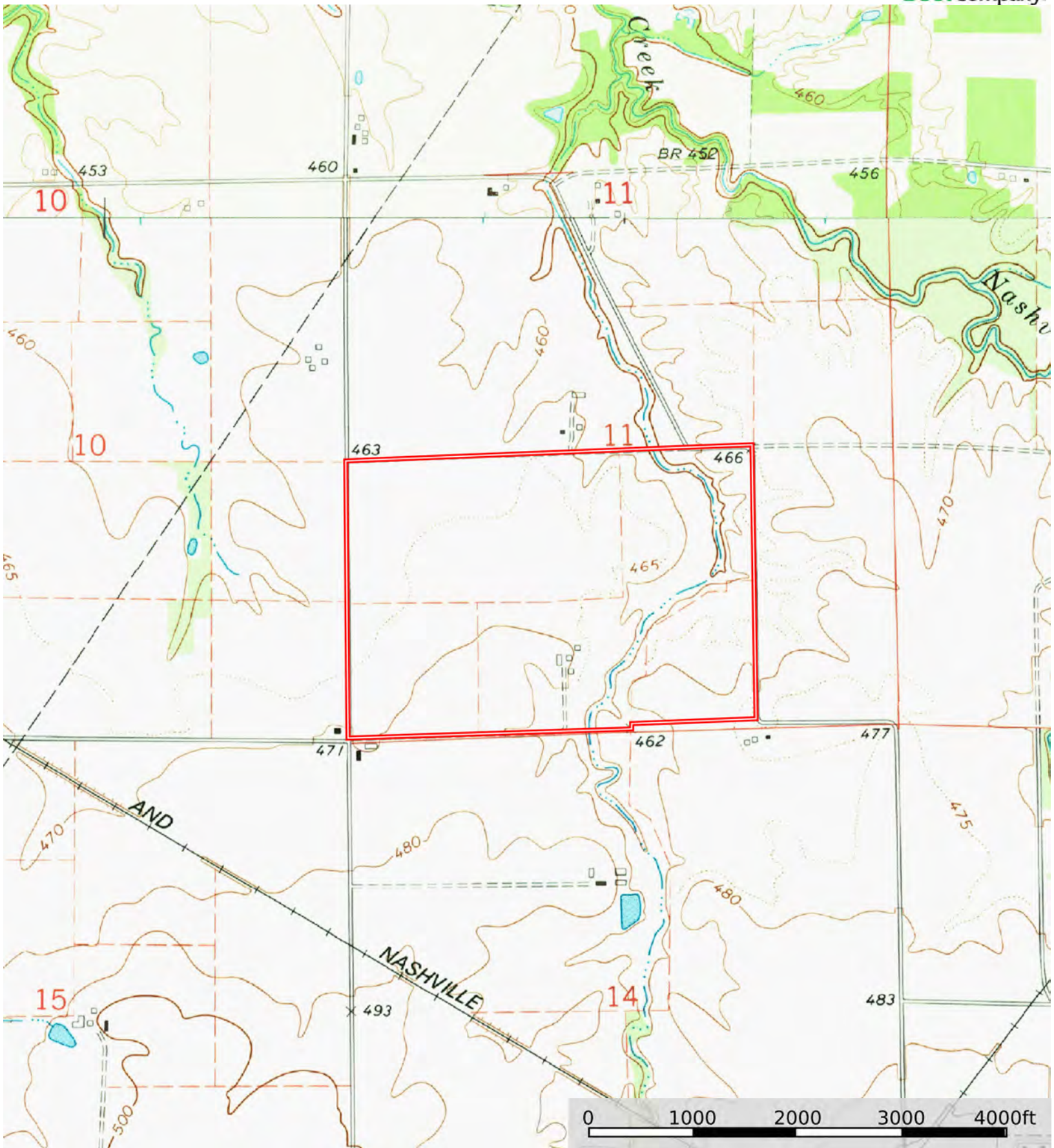


Boundary 238.68 ac

SOIL CODE	SOIL DESCRIPTION	ACRES	%	PI	NCCPI	CAP
882A	Oconee-Darmstadt-Coulterville silt loams, 0 to 2 percent slopes	81.97	34.34	107	73	2w
993A	Cowden-Piasa silt loams, 0 to 2 percent slopes	50.3	21.07	111	74	2w
880B2	Darmstadt-Coulterville silt loams, 2 to 5 percent slopes, eroded	47.51	19.9	94	60	3e
3415wA	Orion silt loam, warm mesic, 0 to 2 percent slopes, frequently flooded	34.48	14.44	131	83	3w
113A	Oconee silt loam, 0 to 2 percent slopes	14.01	5.87	119	83	2w
120A	Huey silt loam, 0 to 2 percent slopes	6.31	2.64	89	57	3w
5C3	Blair silty clay loam, 5 to 10 percent slopes, severely eroded	2.95	1.24	77	73	4e
477B	Winfield silt loam, 2 to 5 percent slopes	0.67	0.28	117	85	2e
50A	Virden silt loam, 0 to 2 percent slopes	0.48	0.2	138	82	2w
TOTALS		238.68(*)	100%	108.66	72.28	2.39

(*) Total acres may differ in the second decimal compared to the sum of each acreage soil. This is due to a round error because we only show the acres of each soil with two decimal.





Boundary

