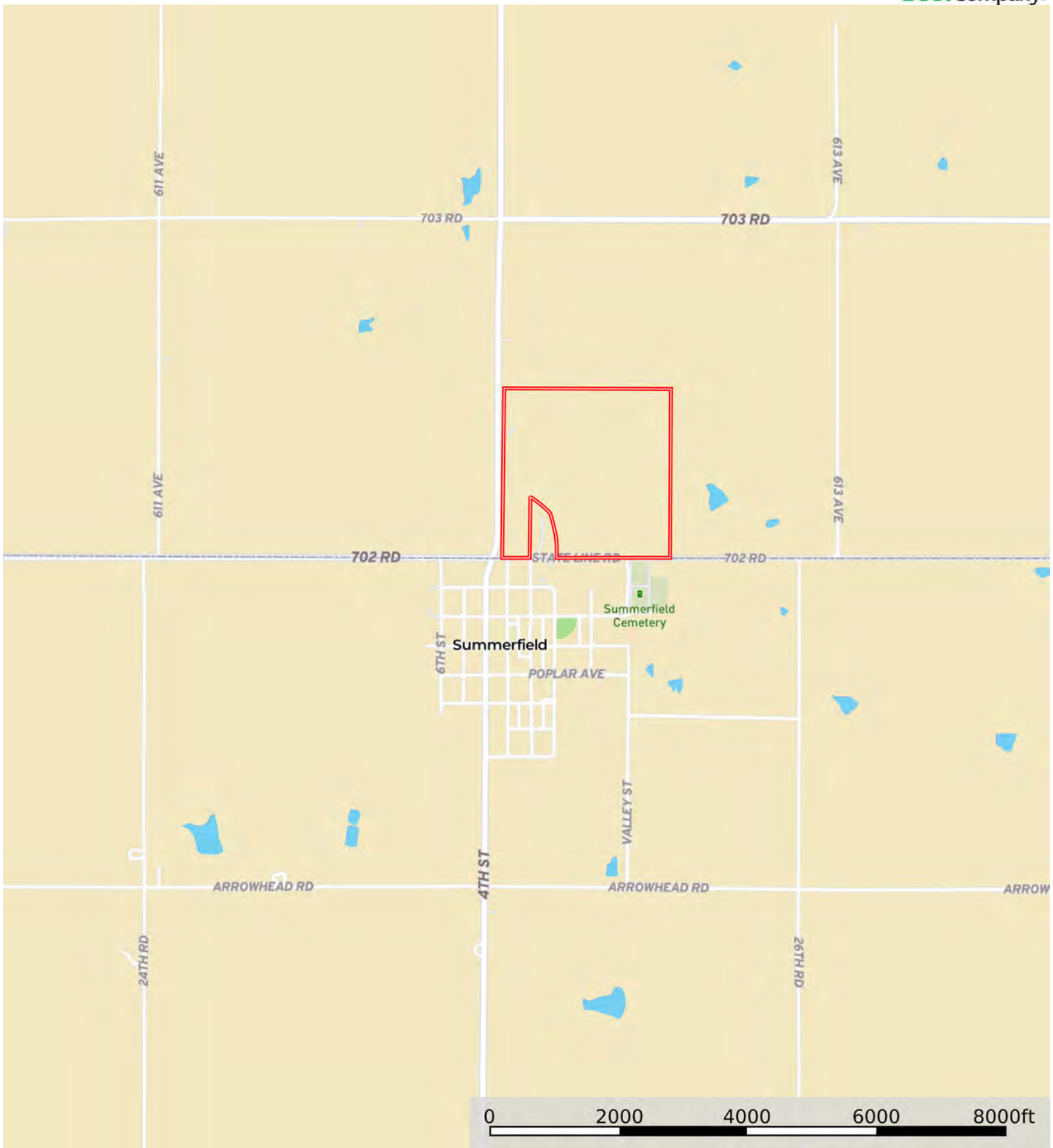


L-2400421

Pawnee County, Nebraska, 151.41 AC +/-



Boundary

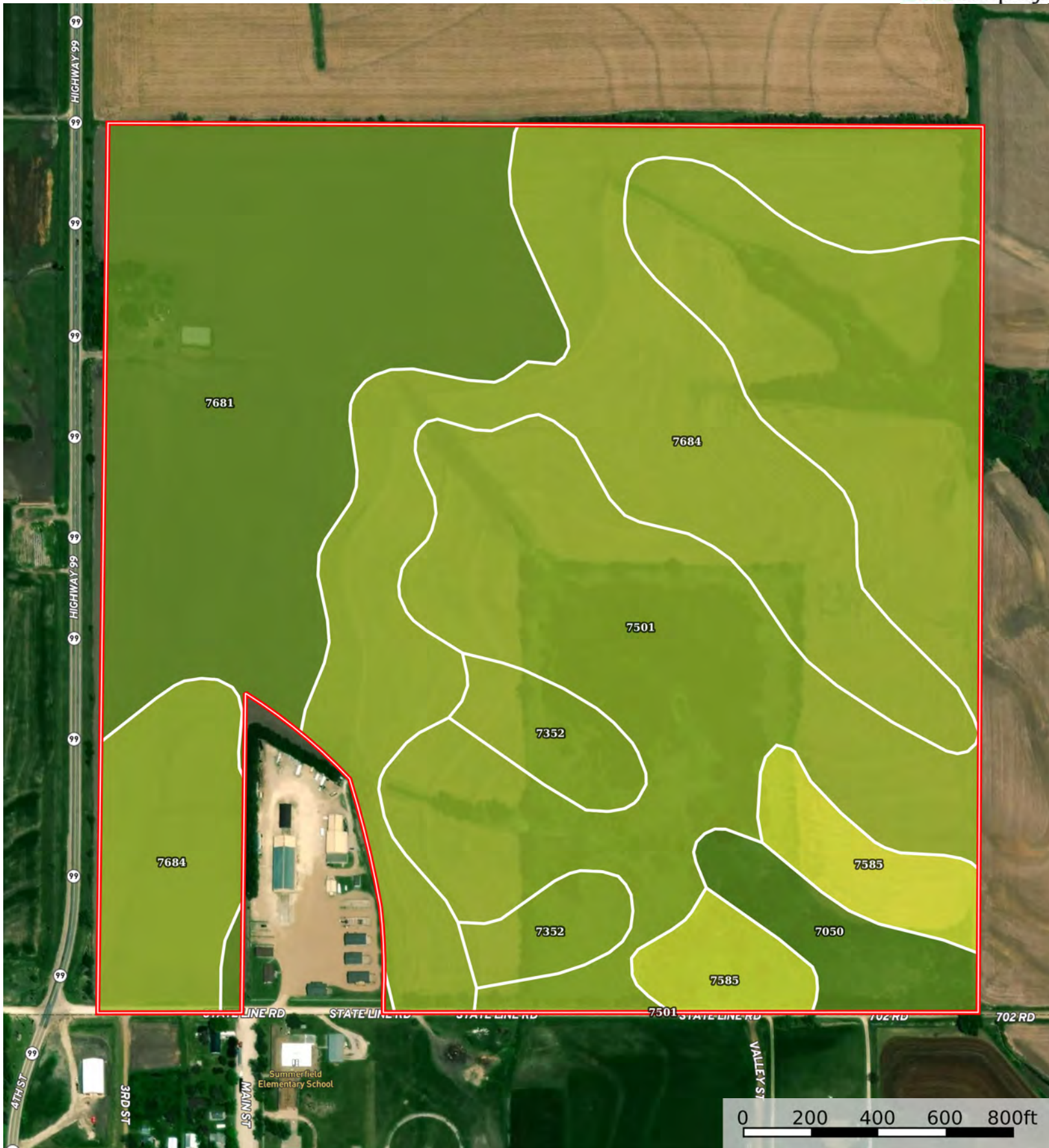


The information contained herein was obtained from sources deemed to be reliable. Land id™ Services makes no warranties or guarantees as to the completeness or accuracy thereof.



Boundary





Boundary

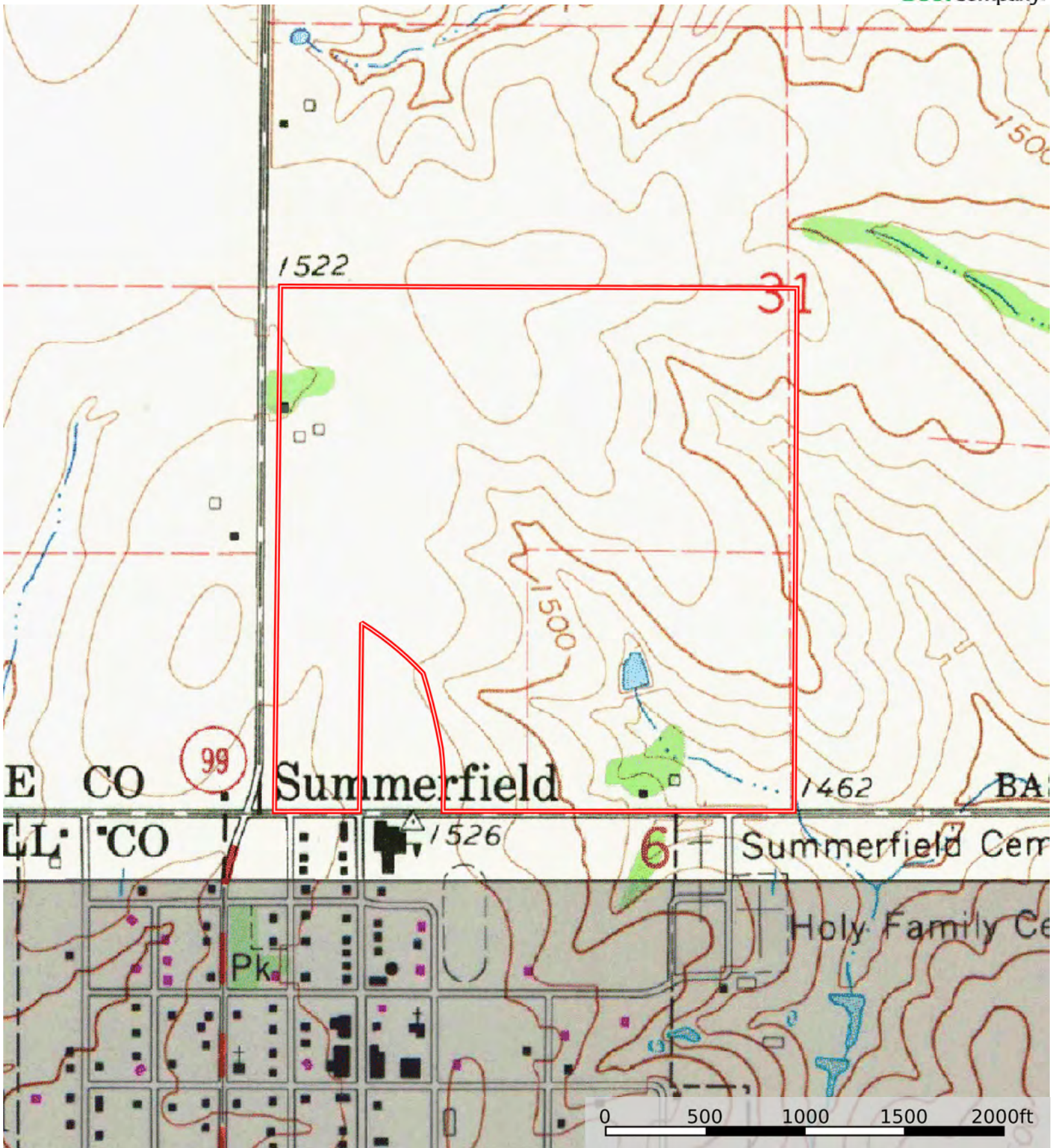


| Boundary 150.4 ac

SOIL CODE	SOIL DESCRIPTION	ACRES	%	CPI	NCCPI	CAP
7501	Pawnee clay loam, 4 to 8 percent slopes, eroded	50.64	33.67	0	44	3e
7684	Wymore silty clay loam, 3 to 6 percent slopes, eroded	44.49	29.58	0	61	3e
7681	Wymore silty clay loam, 1 to 3 percent slopes	37.59	24.99	0	64	2e
7585	Shelby clay loam, 7 to 12 percent slopes	7.05	4.69	0	65	4e
7352	Malmo clay loam, 3 to 11 percent slopes, eroded	5.97	3.97	0	45	3e
7050	Kennebec silt loam, occasionally flooded	4.66	3.1	0	94	2w
TOTALS		150.4(*)	100%	-	56.59	2.77

(*) Total acres may differ in the second decimal compared to the sum of each acreage soil. This is due to a round error because we only show the acres of each soil with two decimal.





Boundary